

STATE OF ILLINOIS
DEPARTMENT OF TRANSPORTATION

RTE.	SECTION	COUNTY	TOTAL SHEETS	SHEET NO.
CR 603	02-23118-00-BR	ADAMS	13	10
STA. 4+70.00		TO STA. 10+16.18		
FED. ROAD DIST. NO. 6		ILLINOIS	FED. AID PROJECT	

BRIDGE PLANS SHEET 5 OF 8

NOTES

Hollow structural steel tubing shall conform to the requirements of ASTM designation A-500 Grade B Structural Steel Tubing and shall meet the longitudinal CVN requirements of 15 ft.-lbs. at 0°F.

All other steel shapes and plates shall conform to the requirements of AASHTO M-270 Grade 36 except posts and angles shall conform to AASHTO M-270 Grade 50.

Bolts, caps screws, and nuts shall conform to the requirement of ASTM designation A-307 except for high strength bolts, nuts, and washers noted which shall conform to AASHTO M-164.

All bolts, nuts, cap screws, washers and lock washers shall be galvanized according to AASHTO M-232.

All posts, railing, rail splices, anchor devices and angles shall be galvanized after shop fabrication according to AASHTO M-111 and ASTM A-385. Galvanized rail shall not be painted.

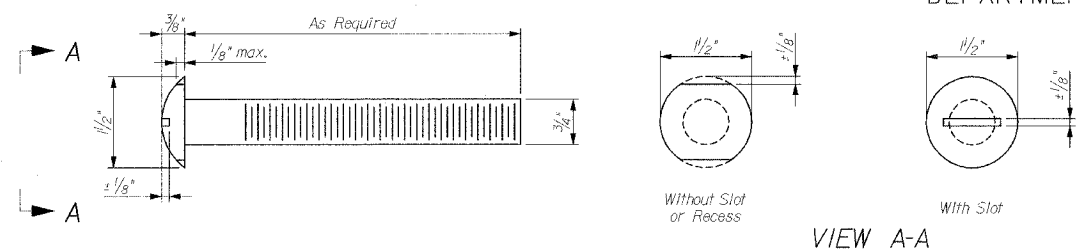
For multi-span bridges, sufficient 1/4" x 6" x 1'-2" galvanized steel shims shall be provided to align rail between adjacent spans. Cost included with Steel Railing, Type S-1.

All field drilled holes shall be coated with an approved zinc rich paint before erection.

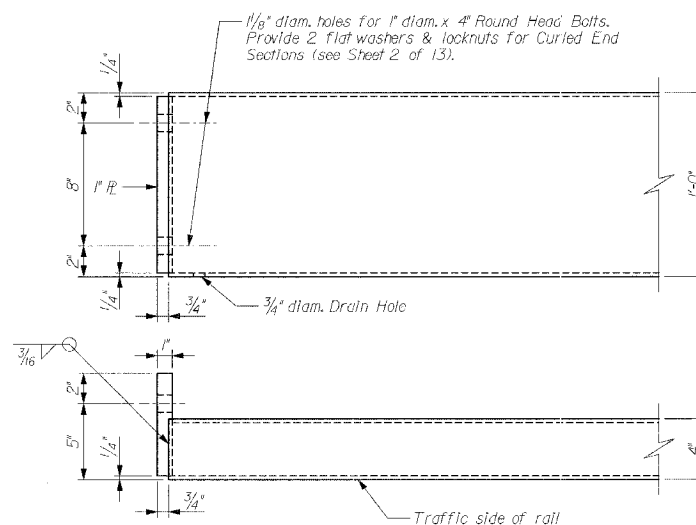
The 1/2" x 7" x 6" plates that come in contact with concrete shall either receive two coats of asphalt paint conforming to Section 1060.07 Type II or 1/8" fabric bearing pads shall be placed between the plates and concrete.

The 3/4" diam. high strength bolts used to connect the 6" x 4" x 3/4" angles to the post shall be tightened according to Article 505.04 (f) (2) of the Standard Specifications. The 1" diam. high strength bolts connecting the angles to the concrete shall be tightened to a snug fit and given an additional 1/8" turn. The 5/8" diam. cap screws in bottom of posts shall be tightened to a snug fit only.

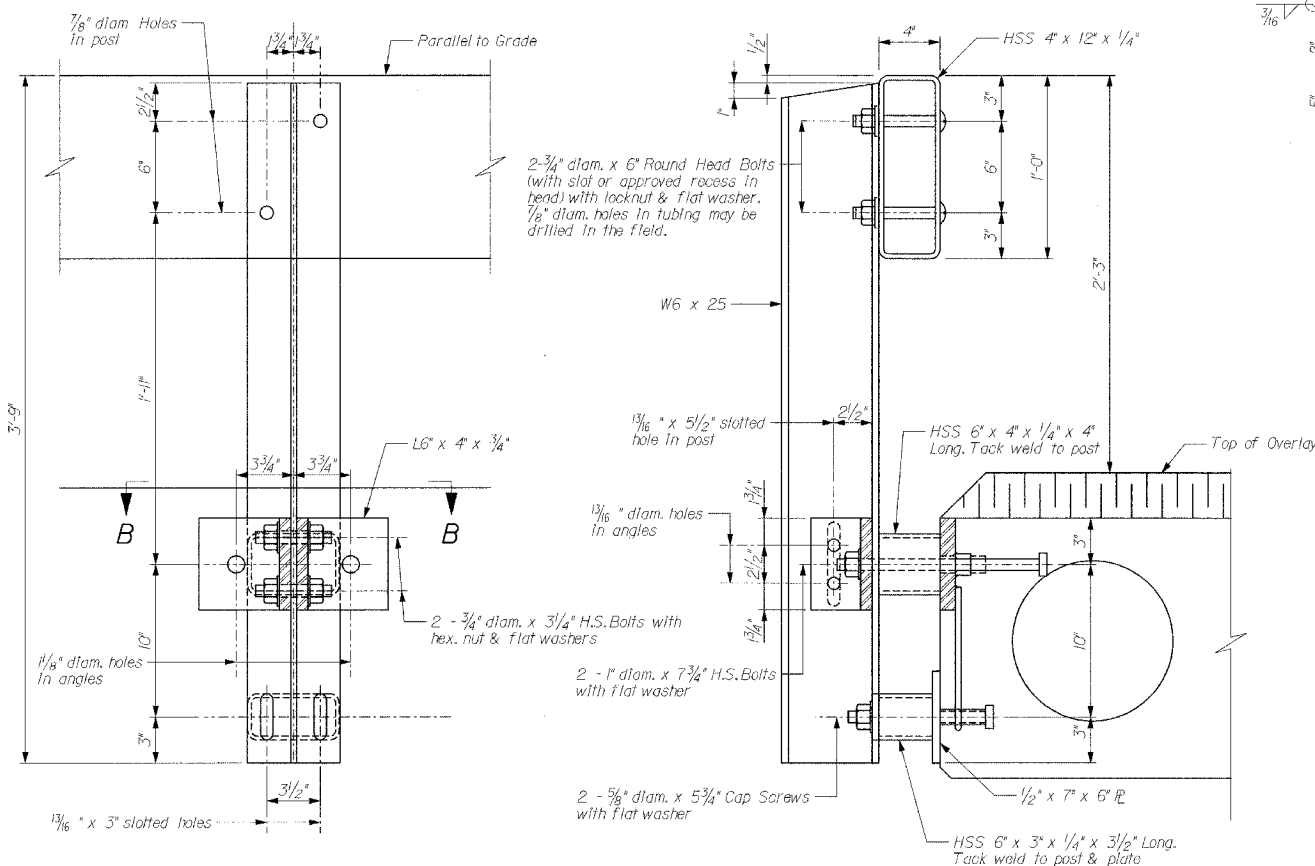
Railing shall be according to Section 509 of the Standard Specifications, except as noted, and will be paid for at the contract unit price per foot for STEEL RAILING, TYPE S-1.



ROUND HEAD BOLT

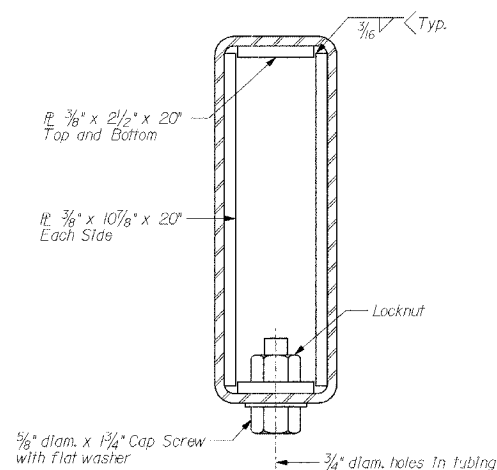


END OF RAIL DETAILS

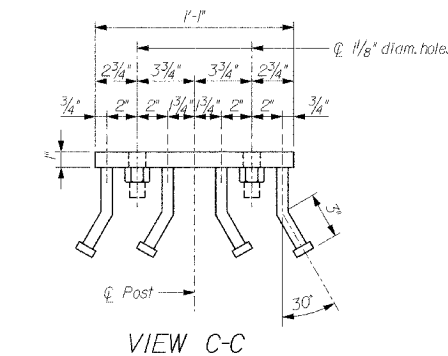


SECTION A-A

SECTION AT RAIL POST

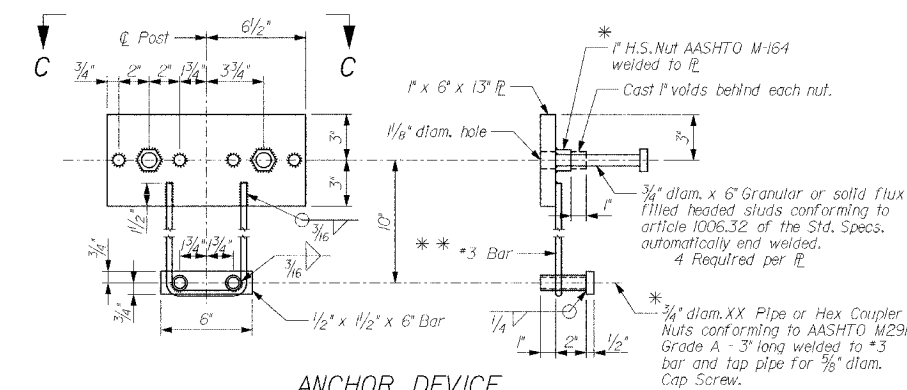


SECTION AT RAIL SPLICE

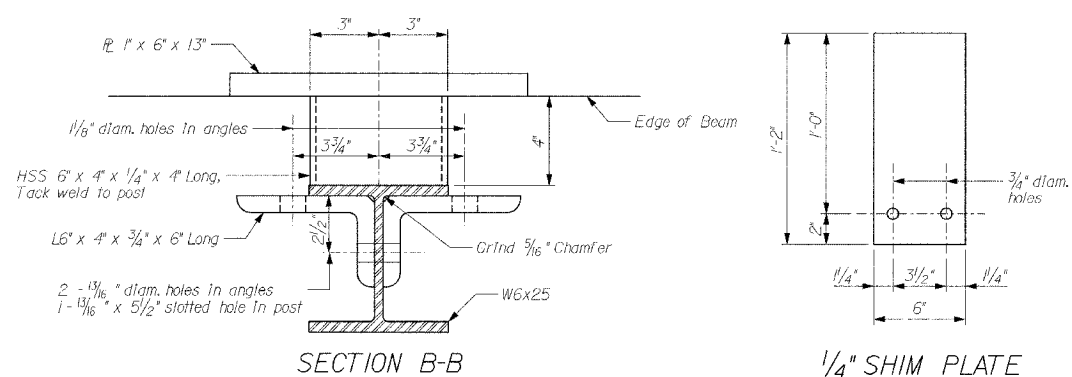


VIEW C-C

- * Threaded areas shall be plugged or blocked off during casting of beam.
- ** Whenever the lower insert assemblies interfere with strand locations, the #3 bars shall be cut and adjusted in order to allow raising or lowering of the lower inserts. Maximum adjustment not to exceed 1/2".

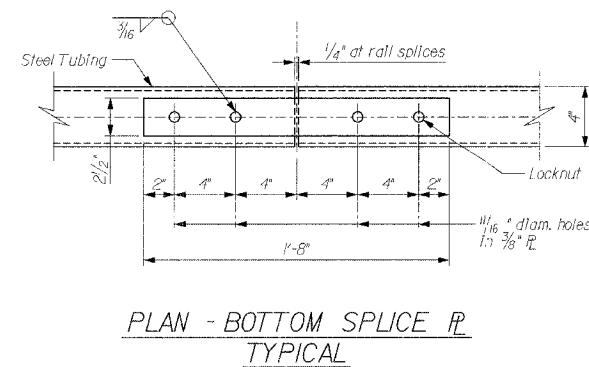


ANCHOR DEVICE



SECTION B-B

1/4" SHIM PLATE



PLAN - BOTTOM SPLICE R TYPICAL

REVISIONS	
NAME	DATE

STEEL RAILING, TYPE S-1

CR 603E OVER
BEAR CREEK
SEC 02-23118-00-BR
ADAMS COUNTY
STA 6+87.26

STRUCTURE NUMBER 001-3417

SCALE: VERT. N/A
HORIZ. N/A
DATE: MAY 2006

DRAWN BY JLS
CHECKED BY DSP