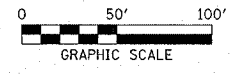
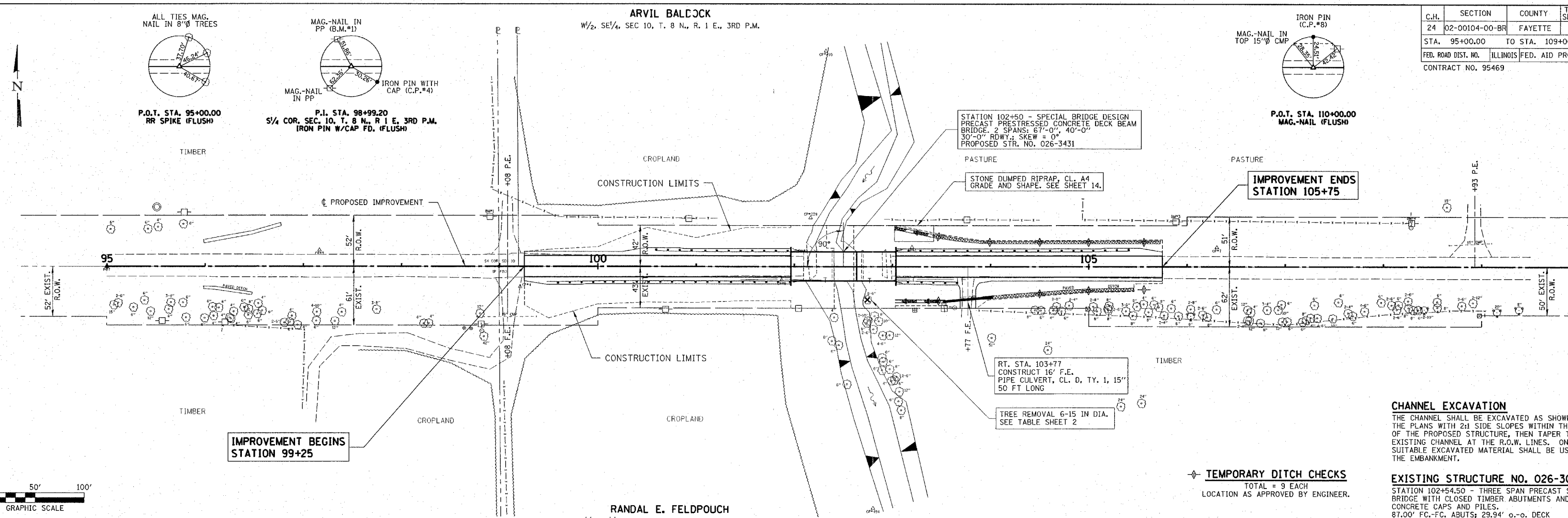


C.H.	SECTION	COUNTY	TOTAL SHEETS
24	02-00104-00-BR	FAYETTE	21
STA. 95+00.00 TO STA. 109+00.00		ILLINOIS FED. AID PROJECT	
CONTRACT NO. 95469			

ARVIL BALDCK  
W/2, SE/4, SEC 10, T. 8 N., R. 1 E., 3RD P.M.

RANDAL E. FELDOUCH  
N/4, NE/4, SEC 15, T. 8 N., R. 1 E., 3RD P.M.



**CHANNEL EXCAVATION**  
THE CHANNEL SHALL BE EXCAVATED AS SHOWN IN THE PLANS WITH 2:1 SIDE SLOPES WITHIN THE LIMITS OF THE PROPOSED STRUCTURE, THEN TAPER TO THE EXISTING CHANNEL AT THE R.O.W. LINES. ONLY SUITABLE EXCAVATED MATERIAL SHALL BE USED IN THE EMBANKMENT.

TEMPORARY DITCH CHECKS  
TOTAL = 9 EACH  
LOCATION AS APPROVED BY ENGINEER.

**EXISTING STRUCTURE NO. 026-3002**  
STATION 102+54.50 - THREE SPAN PRECAST SLAB BRIDGE WITH CLOSED TIMBER ABUTMENTS AND CONCRETE CAPS AND PILES.  
87.00' FC-FC, ABUTS: 29.94' o-o. DECK REMOVAL OF EXISTING STRUCTURES = 1 EACH

DATE	BY	REVISION

DATE	BY	REVISION

