

ROUTE	SECTION	COUNTY	TOTAL SHEETS	SHEET NO.
C.H. 11	05-00101-00-BR	JASPER	12	1
CONTRACT NO. 95472		ILLINOIS	PROJECT	R S-079(132)

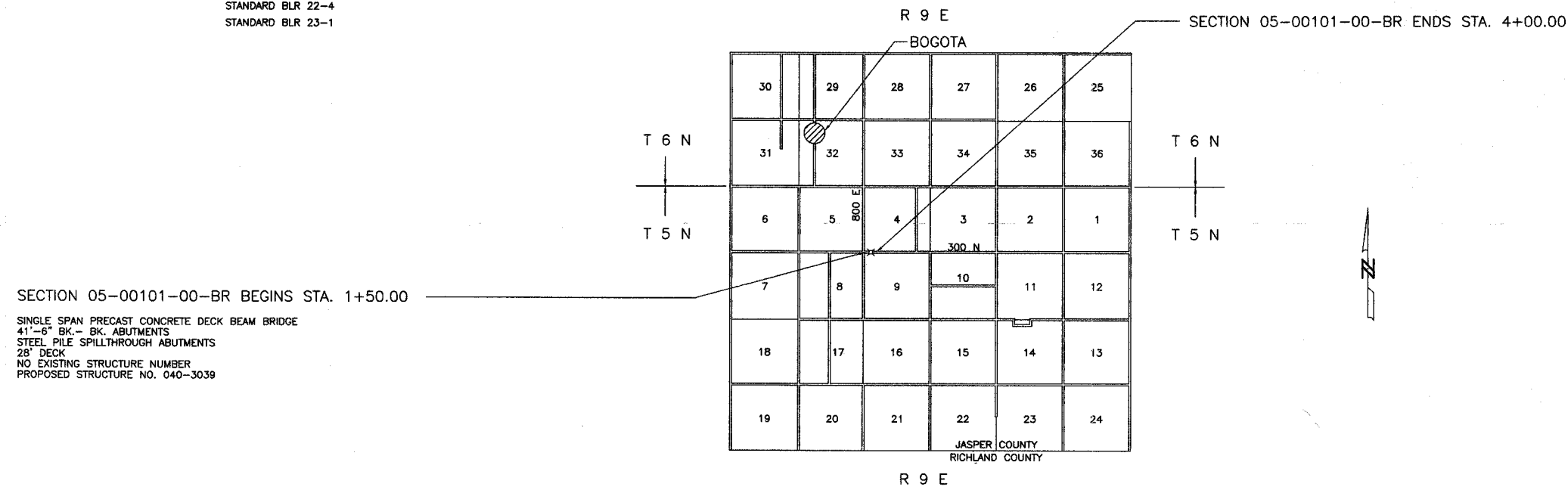
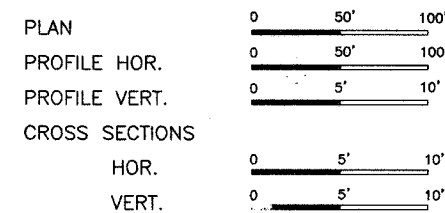
STATE OF ILLINOIS  
DEPARTMENT OF TRANSPORTATION  
DIVISION OF HIGHWAYS  
PLANS FOR PROPOSED  
SURFACE TRANSPORTATION RURAL PROJECT  
SECTION 05-00101-00-BR JASPER COUNTY  
PROJECT R S-079(132)  
JOB NO. C-97-100-06  
C.H. 11

Joint Utility Locating Information for Excavators  
JULIE 1-800-892-0123

INDEX OF SHEETS

SHEET	ITEM
1	COVER SHEET
2	SUMMARY OF QUANTITIES
3	ROADWAY PLAN AND PROFILE
4	GENERAL PLAN AND ELEVATION
5	STANDARD CS-2821-40
6	STANDARD CB-2821-48
7	STANDARD CA-2821-10
8	STANDARD CR-TS1
9	STANDARD CN
10	STANDARD CX-1
11-12	CROSS SECTIONS

- STANDARD DRAWINGS
- STANDARD 000001-04
  - STANDARD 280001-02
  - STANDARD 630001-06
  - STANDARD 631026-02
  - STANDARD 668001
  - STANDARD 702001-06
  - STANDARD BLR 21-6
  - STANDARD BLR 22-4
  - STANDARD BLR 23-1



SINGLE SPAN PRECAST CONCRETE DECK BEAM BRIDGE  
41'-6" BK - BK ABUTMENTS  
STEEL PILE SPILLTHROUGH ABUTMENTS  
28' DECK  
NO EXISTING STRUCTURE NUMBER  
PROPOSED STRUCTURE NO. 040-3039

FUNCTIONAL CLASSIFICATION - RURAL MINOR COLLECTOR  
ADT = 150  
DESIGN SPEED = 40 MPH

CONTRACT NO. 95472

NET LENGTH SECTION 05-00101-00-BR = 250.00 Ft. = 0.047 Mi.

*Roger A. Charbit*  
Ill. Reg. Prof. Eng. #29115  
5/10/06  
Lic. Expires 11/30/07

CHARLESTON ENGINEERING INC. 5186  
105 N. KITCHELL  
P.O. BOX 397  
OLNEY, ILLINOIS 62450  
PH. 618-392-0736

REGISTERED PROFESSIONAL ENGINEER OF ILLINOIS

APPROVED 5-12 2006  
*Richard A. Patterson*  
COUNTY ENGINEER

PASSED 6/5 2006  
*Manuel Koel*  
DISTRICT SEVEN ENGINEER OF LOCAL ROADS AND STREETS

Releasing For Bid Based on Limited Review 6/5 2006  
*Christina M. Reed*  
DEPUTY DIRECTOR OF HIGHWAYS  
REGION FOUR ENGINEER

STATE OF ILLINOIS  
DEPARTMENT OF TRANSPORTATION