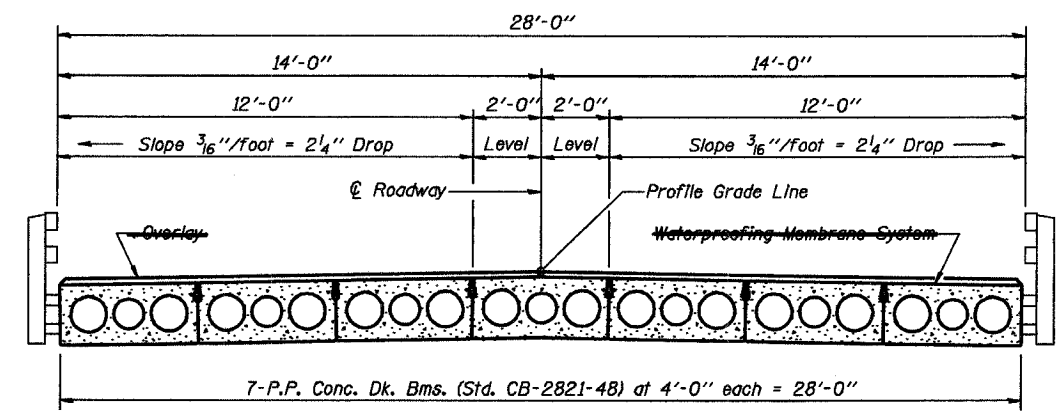
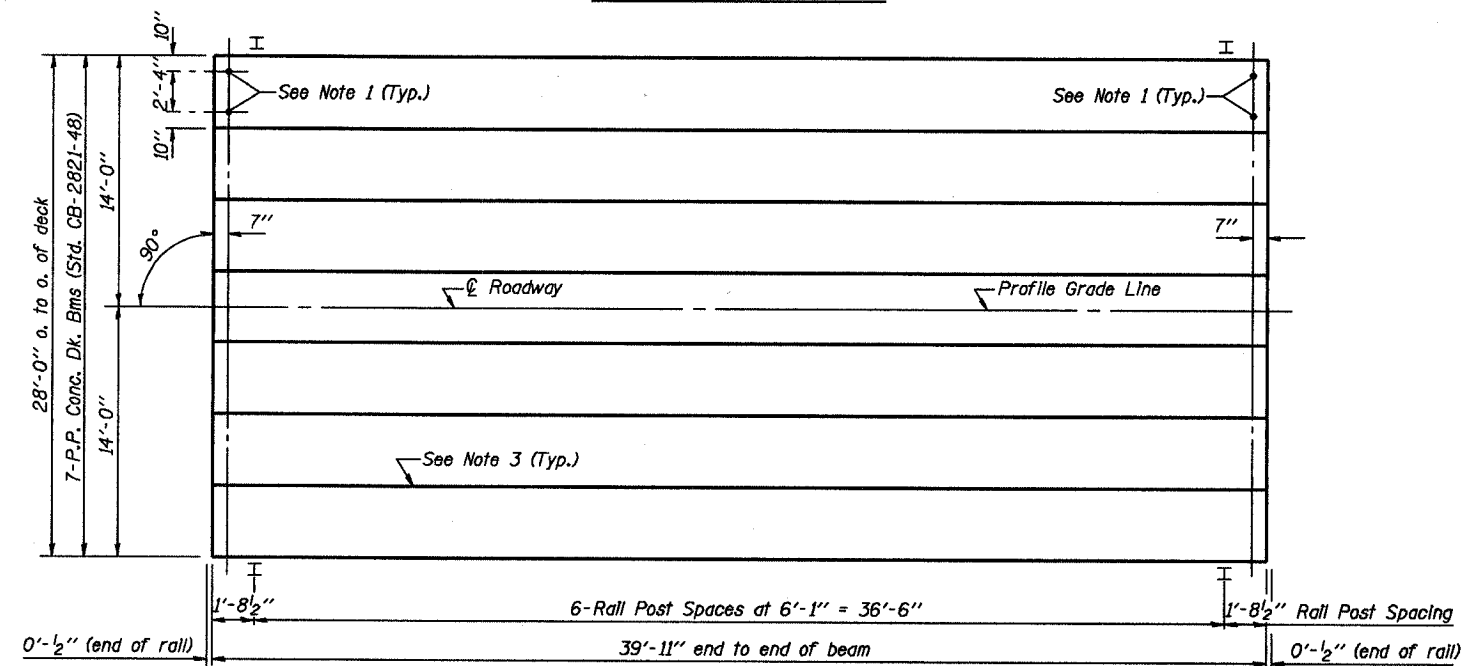


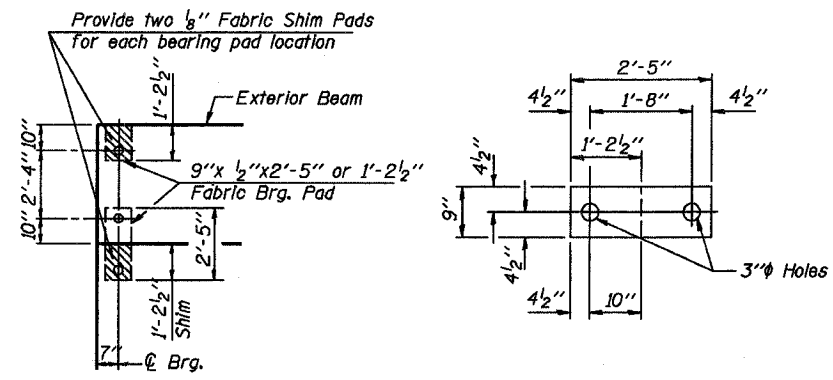
TYPICAL ELEVATIONS



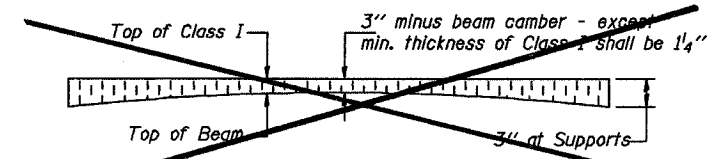
CROSS SECTION



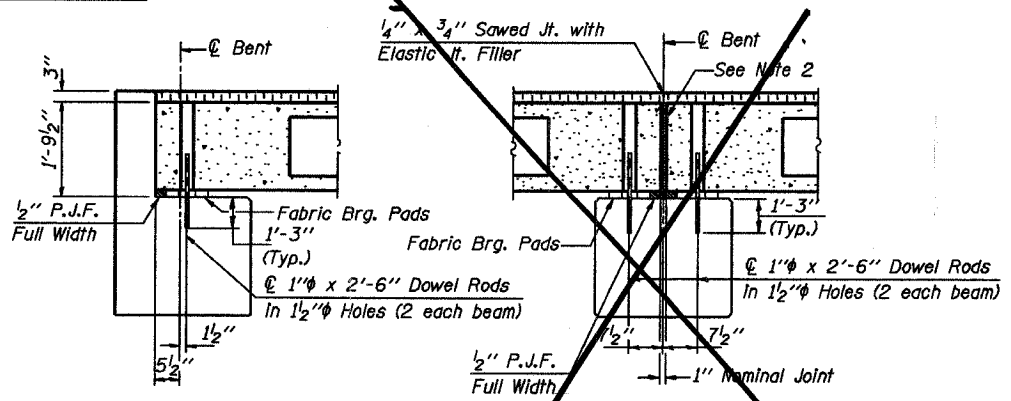
PLAN



1/2" FABRIC BRG. PAD DETAILS



PROFILE OF OVERLAY



SECTION AT ABUTS.
(Along centerline Beams)

SECTION AT PIERS
(Along centerline Beams)

NOTES

1. After beams have been erected, holes shall be drilled into substructure and anchor dowels placed. Dowel holes shall be filled with non-shrink grout to top of beam and allowed to cure min. 24 hrs. prior to grouting the shear keys.
2. Nominal 1" joint at centerline Pier shall be filled with non-shrink grout.
3. Longitudinal keys shall be grouted.

QUANTITIES FOR ONE SPAN

P.P. Conc. Dk. Bm. 17" Dp.	1120 Sq. Ft.
Steel Railing	80 Ft.
Waterproofing Membrane System	221.1 Sq. Yds.
Portland Cement Mortar	240 Cu. Ft.
Feining Course	

Note: Quantity of overlay for one span - 181 Tons

P.P.C. DECK BEAM SUPERSTRUCTURE			
28' RDWY.	21" BMS.	40' SPAN	0° SKEW
STANDARD CS-2821-40			

Illinois Department of Transportation

PASSED APRIL 4, 2005
 Thomas S. Demagala
 Engineer of Bridge Design

APPROVED APRIL 4, 2005
 Ralph E. Anderson
 Engineer of Bridges and Structures

DESIGNED: T.S.D.
 DRAWN: T.S.D.