

STATE OF ILLINOIS DEPARTMENT OF TRANSPORTATION DIVISION OF HIGHWAYS PLANS FOR PROPOSED HIGHWAY BRIDGE PROGRAM

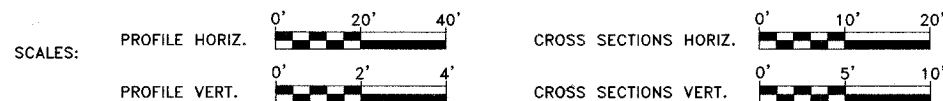
ROUTE NO.	SECTION	COUNTY	TOTAL SHEETS	SHEET NO.
TR 416	05-07128-00-BR	FAYETTE	12	1
FED. ROAD DIST. NO.	ILLINOIS	PROJECT		

CONTRACT NO. 95481



LOCATION OF PROJECT INDICATED THUS - - -

INDEX OF SHEETS	
1	COVER SHEET
2	TYPICAL CROSS SECTION, GENERAL NOTES, AND SUMMARY OF QUANTITIES
3	PLAN AND PROFILE SHEET
4-11	BRIDGE PLANS
12	CROSS SECTIONS
STANDARD 000001-04	STANDARD SYMBOLS, ABBREVIATIONS AND PATTERNS
STANDARD 280001-02	TEMPORARY EROSION CONTROL SYSTEMS
STANDARD 702001-06	TRAFFIC CONTROL DEVICES
STANDARD B.L.R. 21-6	TYPICAL APPLICATION OF TRAFFIC CONTROL DEVICES FOR CONSTRUCTION ON RURAL LOCAL HIGHWAYS

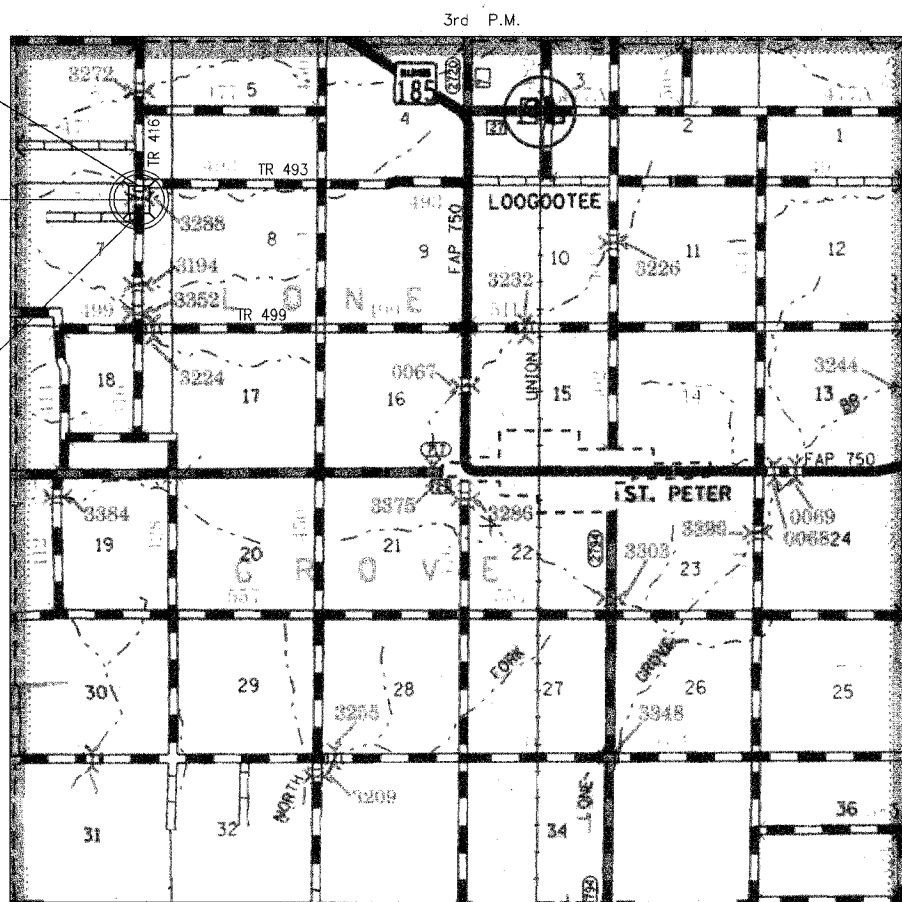


SECTION 05-07128-00-BR PROJECT NO. BROS-051(73) LONE GROVE ROAD DISTRICT FAYETTE COUNTY JOB NO. C-97-101-06

END SECTION 05-07128-00-BR
STA. 50+30.75

STA. 50+00 - CONSTRUCT SINGLE SPAN PRECAST
PRESTRESSED CONCRETE DECK BEAM BRIDGE
(61.50' BK. TO BK. ABUTMENTS) WITH
SPILL-THRU PILE BENT ABUTMENTS
0° SKEW, 24' ROADWAY
EXISTING STRUCTURE NO. 026-3288
PROPOSED STRUCTURE NO. 026-3430

BEGIN SECTION 05-07128-00-BR
STA. 49+69.25

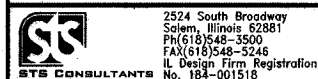


LOCATION MAP

APPROXIMATE SCALE - 1" = 0.60 MILE
NET LENGTH OF IMPROVEMENTS - 61.50 FEET = 0.012 MILE

48 HOURS PRIOR TO EXCAVATION CALL J.U.L.I.E.: 1-800-892-0123

CLASS ROAD: RURAL LOCAL ROAD
A.D.T. = 100
30 M.P.H.



STS JOB NO. 30389

APPROVED May 9, 2006
Michael A. Mah
COUNTY ENGINEER

PASSED June 9, 2006
Maureen East
DISTRICT SEVEN ENGINEER OF
LOCAL ROADS & STREETS

Releasing For
Bid Based on
Limited Review June 9, 2006
Christ M. Reed
DEPUTY DIRECTOR OF HIGHWAYS,
REGION FOUR ENGINEER
STATE OF ILLINOIS
DEPARTMENT OF TRANSPORTATION



5/4/06
LIC. EXP. 11/30/07