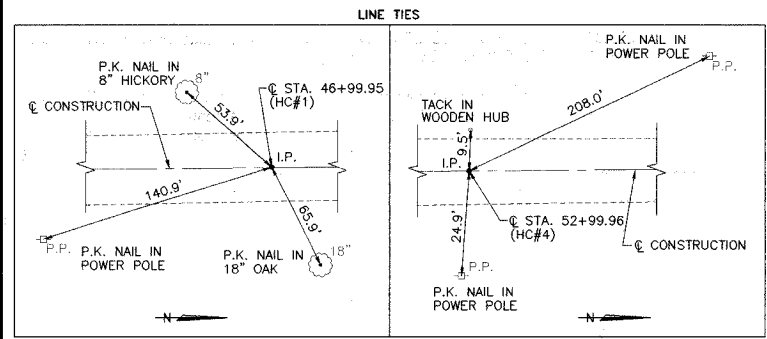


CONSTRUCT SEEDING, CLASS 2 (SPECIAL)
 STA. 49+19.25 TO STA. 50+80.75 = 0.02 ACRE

ROUTE NO.	SECTION	COUNTY	TOTAL SHEETS	SHEET NO.
TR 416	05-07128-00-BR	FAYETTE	12	3
FED. ROAD DIST. NO.		ILLINOIS PROJECT	CONTRACT NO. 95481	

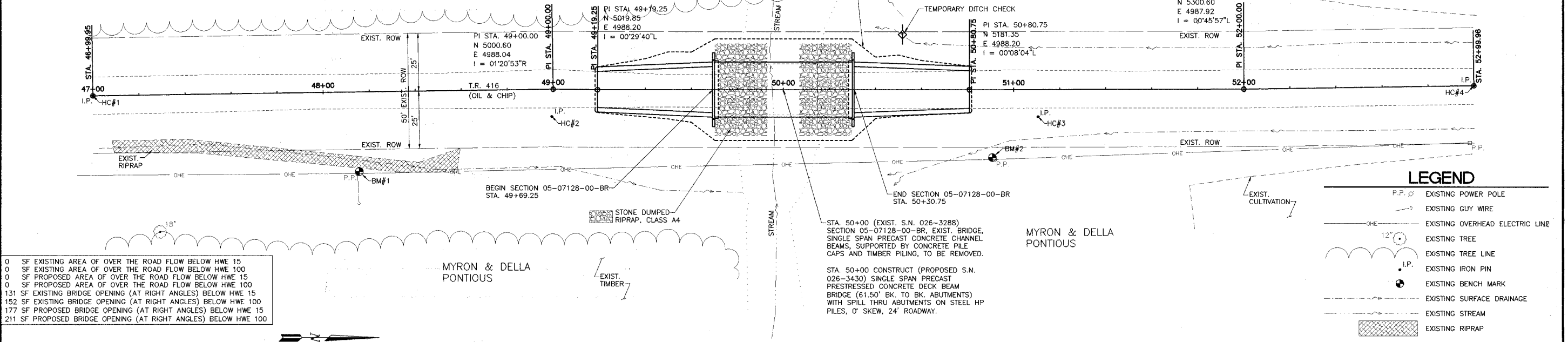


HORIZONTAL CONTROL COORDINATES

POINT	LOCATION	N. COOR.	E. COOR.
HC#1 (IRON PIN)	Q STA. 46+99.95	4800.57	4991.02
HC#2 (IRON PIN)	11.95' RT., STA. 48+99.22	5000.00	5000.00
HC#3 (IRON PIN)	11.87' RT., STA. 51+10.55	5211.17	5000.00
HC#4 (IRON PIN)	Q STA. 52+99.96	5400.55	4986.35

BENCH MARK COORDINATES

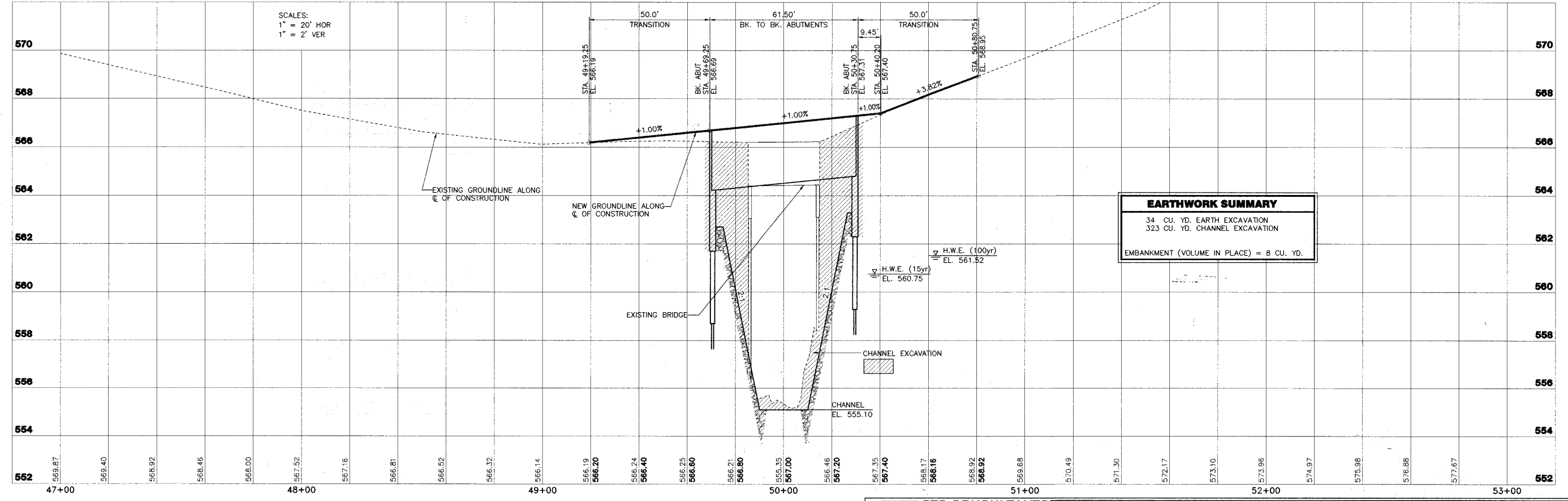
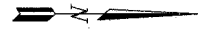
POINT	LOCATION	ELEV.
BM#1 (R.R. SPIKE IN POWER POLE)	34.6' RT., STA. 48+15.2	566.59
BM#2 (R.R. SPIKE IN POWER POLE)	29.4' RT., STA. 50+90.7	570.97



- 0 SF EXISTING AREA OF OVER THE ROAD FLOW BELOW HWE 15
- 0 SF EXISTING AREA OF OVER THE ROAD FLOW BELOW HWE 100
- 0 SF PROPOSED AREA OF OVER THE ROAD FLOW BELOW HWE 15
- 0 SF PROPOSED AREA OF OVER THE ROAD FLOW BELOW HWE 100
- 131 SF EXISTING BRIDGE OPENING (AT RIGHT ANGLES) BELOW HWE 15
- 152 SF EXISTING BRIDGE OPENING (AT RIGHT ANGLES) BELOW HWE 100
- 177 SF PROPOSED BRIDGE OPENING (AT RIGHT ANGLES) BELOW HWE 15
- 211 SF PROPOSED BRIDGE OPENING (AT RIGHT ANGLES) BELOW HWE 100

LEGEND

- P.P. EXISTING POWER POLE
- EXISTING GUY WIRE
- OHE EXISTING OVERHEAD ELECTRIC LINE
- 12" EXISTING TREE
- EXISTING TREE LINE
- I.P. EXISTING IRON PIN
- EXISTING BENCH MARK
- EXISTING SURFACE DRAINAGE
- EXISTING STREAM
- EXISTING RIPRAP



EARTHWORK SUMMARY

34 CU. YD. EARTH EXCAVATION
323 CU. YD. CHANNEL EXCAVATION
EMBANKMENT (VOLUME IN PLACE) = 8 CU. YD.

STS CONSULTANTS
 2524 South Broadway
 Salem, Illinois 62881
 Ph (618) 548-3500
 Fax (618) 548-5246
 IL Design Firm Reg. No. 184-001518

TR 416, SECTION 05-07128-00-BR
 LONE GROVE ROAD DISTRICT
 FAYETTE COUNTY, ILLINOIS

PLAN AND PROFILE
 STA. 47+00 TO STA. 53+00

SURVEY	JAS	CHECKED	DATE
DESIGN	DJC	APPROVED	7/04/06
DRAWN	BLT/DJC	JOB NO.	30369