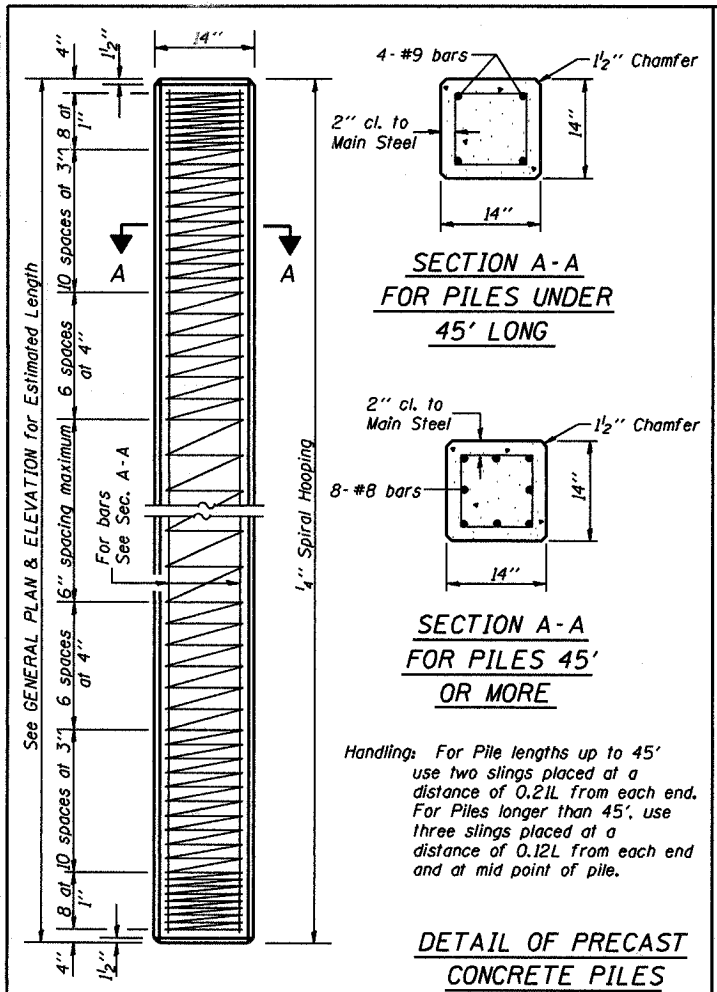


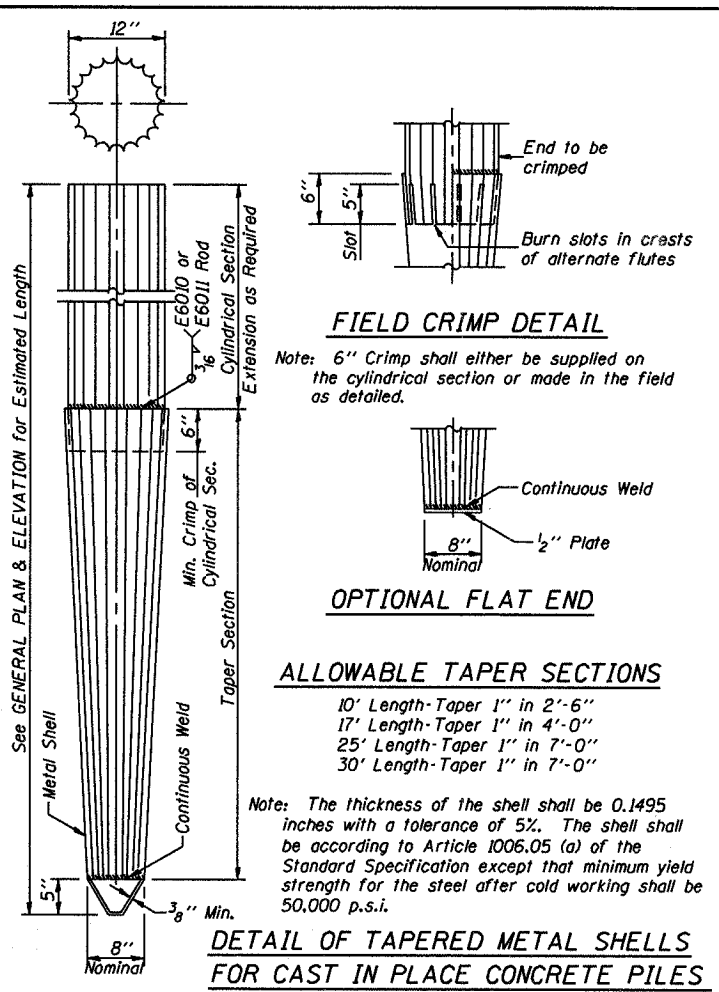
ROUTE NO.	SECTION	COUNTY	TOTAL SHEETS	SHEET NO.
TR 416	05-0712B-0C-BR	FAYETTE	12	11
FED. ROAD DIST. NO.	ILLINOIS	PROJECT	CONTRACT No. 95481	

Reinforcement cage shall be omitted when Concrete Encasement is provided.

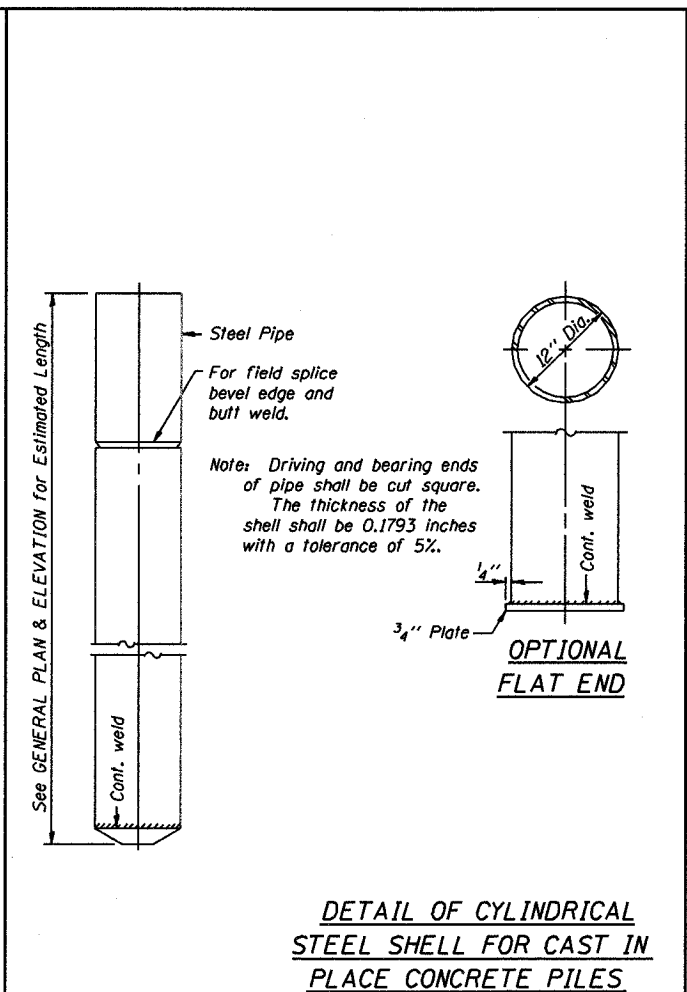
The cost of Reinforcement is included with the Cost of Furnishing Piles.



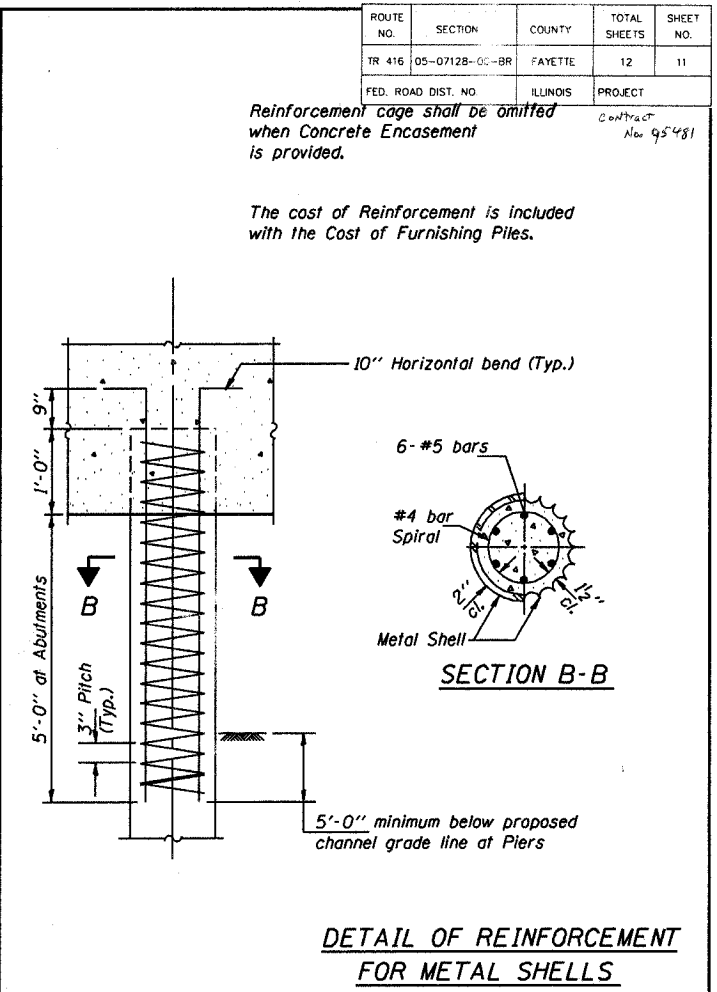
**DETAIL OF PRECAST CONCRETE PILES**



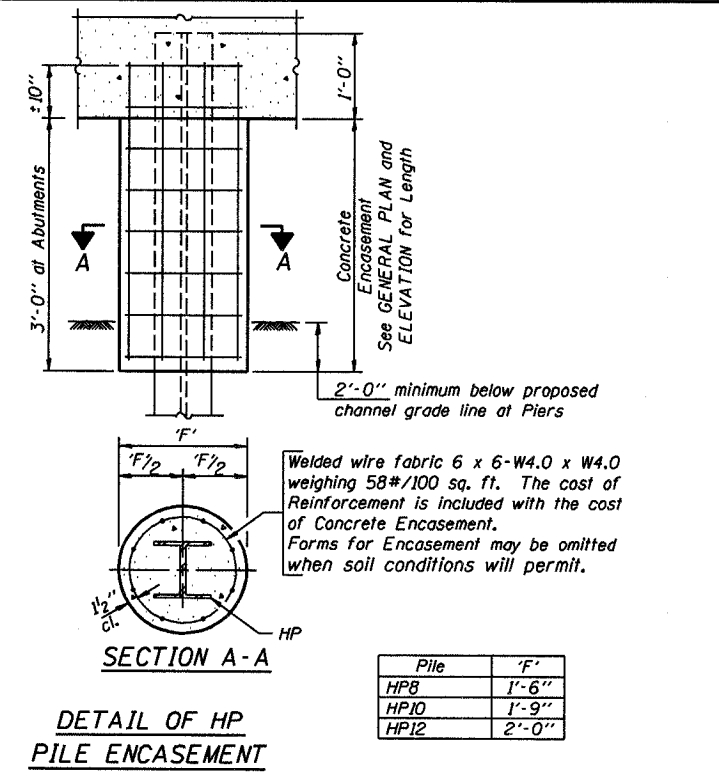
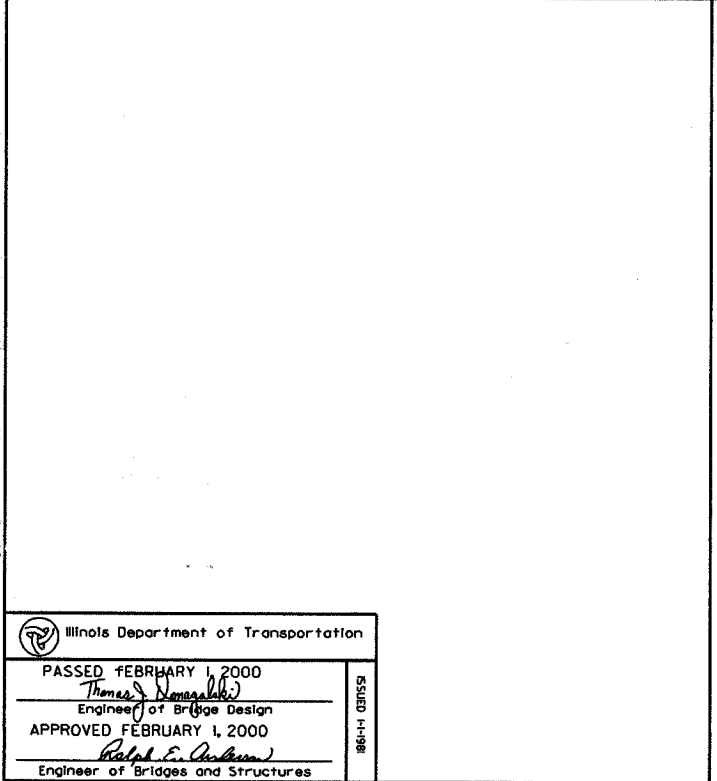
**DETAIL OF TAPERED METAL SHELLS FOR CAST IN PLACE CONCRETE PILES**



**DETAIL OF CYLINDRICAL STEEL SHELL FOR CAST IN PLACE CONCRETE PILES**



**DETAIL OF REINFORCEMENT FOR METAL SHELLS**



**QUANTITIES/FT. OF ENCASEMENT (STEEL PILES)**

Pile Size	Item	Quantity
HP8	Concrete Encasement	0.063 C.Y.
HP10	Concrete Encasement	0.086 C.Y.
HP12	Concrete Encasement	0.112 C.Y.

**(METAL SHELL PILES)**

Pile Size	Item	Quantity
12" Dia.	Concrete Encasement	0.087 C.Y.

<b>PILE DETAILS</b>	
<b>STANDARD CX-1</b>	

Illinois Department of Transportation  
 PASSED FEBRUARY 1, 2000  
 Approved by: *Thomas D. Noma*  
 Engineer of Bridge Design  
 APPROVED FEBRUARY 1, 2000  
 Approved by: *Ralph E. Anderson*  
 Engineer of Bridges and Structures