

SE. 1/4, SW. 1/4, SEC. 34, T. 12 N. R. 3 E., 3RD P.M.
LINDA KARL

CARL KIRCHER

ROUTE	SECTION	COUNTY	TOTAL SHEETS	SHEET NO.
T.R. 133	05-1717 -00-BR	SHELBY	21	3
STA. 30+10.07	TO STA. 23+25.31			
ROAD DISTRICT	ILLINOIS	RIDGE		

CONTRACT NO. 95484

WASHINGTON CEMETERY

CURVE DATA

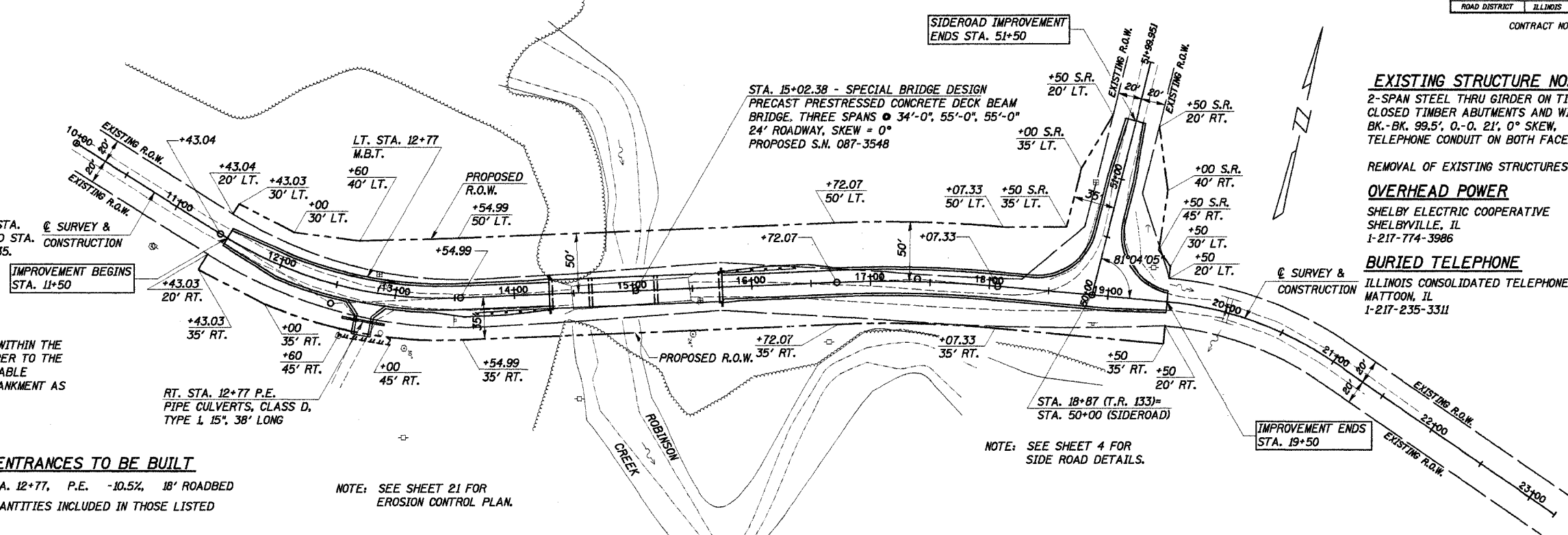
P.I. STA. 12+52.34	P.I. STA. 17+39.80
D = 16°16'38"	D = 05°43'46"
Δ = 34°30' (LT)	Δ = 7°45' (RT)
T = 109.30'	T = 67.73'
R = 352.00'	R = 1000.00'
L = 211.95'	L = 135.26'
E = 16.58'	E = 2.29'
P.C. STA. 11+43.04	P.C. STA. 16+72.07
P.T. STA. 13+54.99	P.T. STA. 18+07.33
S.E. = 0.04 FT./FT.	S.E. = 0.04 FT./FT.

TRANSITION FROM STA. 11+50 TO 12+42 AND STA. 13+08 TO STA. 14+00. TRANSITION FROM STA. 16+08 TO 17+00 AND STA. 17+43 TO STA. 18+35. @ SURVEY & CONSTRUCTION

CHANNEL EXCAVATION

THE CHANNEL SHALL BE EXCAVATED AS SHOWN WITHIN THE LIMITS OF THE PROPOSED STRUCTURE THEN TAPER TO THE EXISTING CHANNEL AT THE R.O.W. LINES. SUITABLE EXCAVATED MATERIAL TO BE USED IN THE EMBANKMENT AS DIRECTED BY THE ENGINEER.

CHANNEL EXCAVATION = 880 CU. YD.



EXISTING STRUCTURE NO. 087-3122

2-SPAN STEEL THRU GIRDER ON TIMBER PIER WITH CLOSED TIMBER ABUTMENTS AND WINGWALLS, BK.-BK. 99.5', 0.-0. 21', 0° SKEW, TELEPHONE CONDUIT ON BOTH FACES.

REMOVAL OF EXISTING STRUCTURES = 1 EACH

OVERHEAD POWER

SHELBY ELECTRIC COOPERATIVE
SHELBYVILLE, IL
1-217-774-3986

BURIED TELEPHONE

ILLINOIS CONSOLIDATED TELEPHONE COMPANY
MATTOON, IL
1-217-235-3311

ENTRANCES TO BE BUILT

RT. STA. 12+77, P.E. -10.5%, 18' ROADBED
QUANTITIES INCLUDED IN THOSE LISTED

NOTE: SEE SHEET 21 FOR EROSION CONTROL PLAN.

LINDA KARL

SE. 1/4, SW. 1/4, SEC. 34, T. 12 N. R. 3 E., 3RD P.M.

B.M. #2 - SPIKE NAIL IN WINGWALL POST AT NE COR. ABUTMENT
EL. 601.01

INDICATES TEMPORARY CONSTRUCTION EASEMENT TO BE ACQUIRED.

B.M. #3 - SPIKE NAIL IN POWER POLE
31' RT. STA. 16+66
EL. 597.47

B.M. #1 - SPIKE NAIL IN POWER POLE
111' RT. STA. 13+08
EL. 601.86

