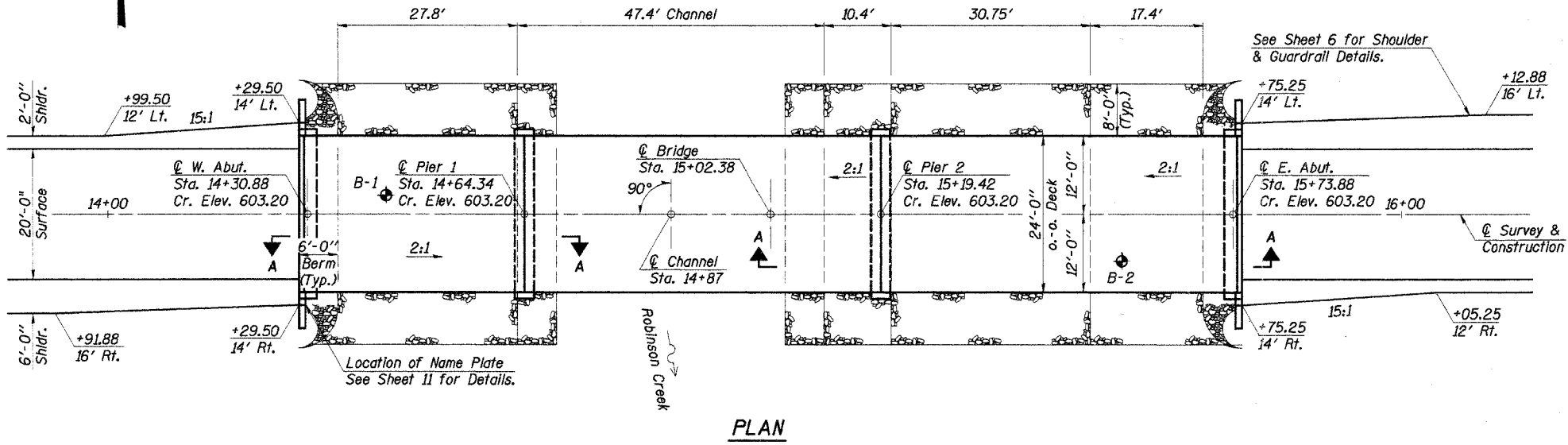
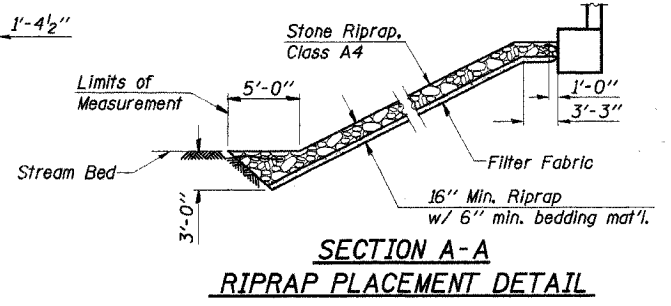
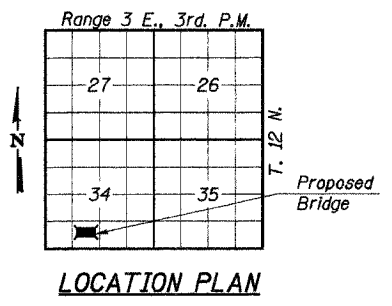
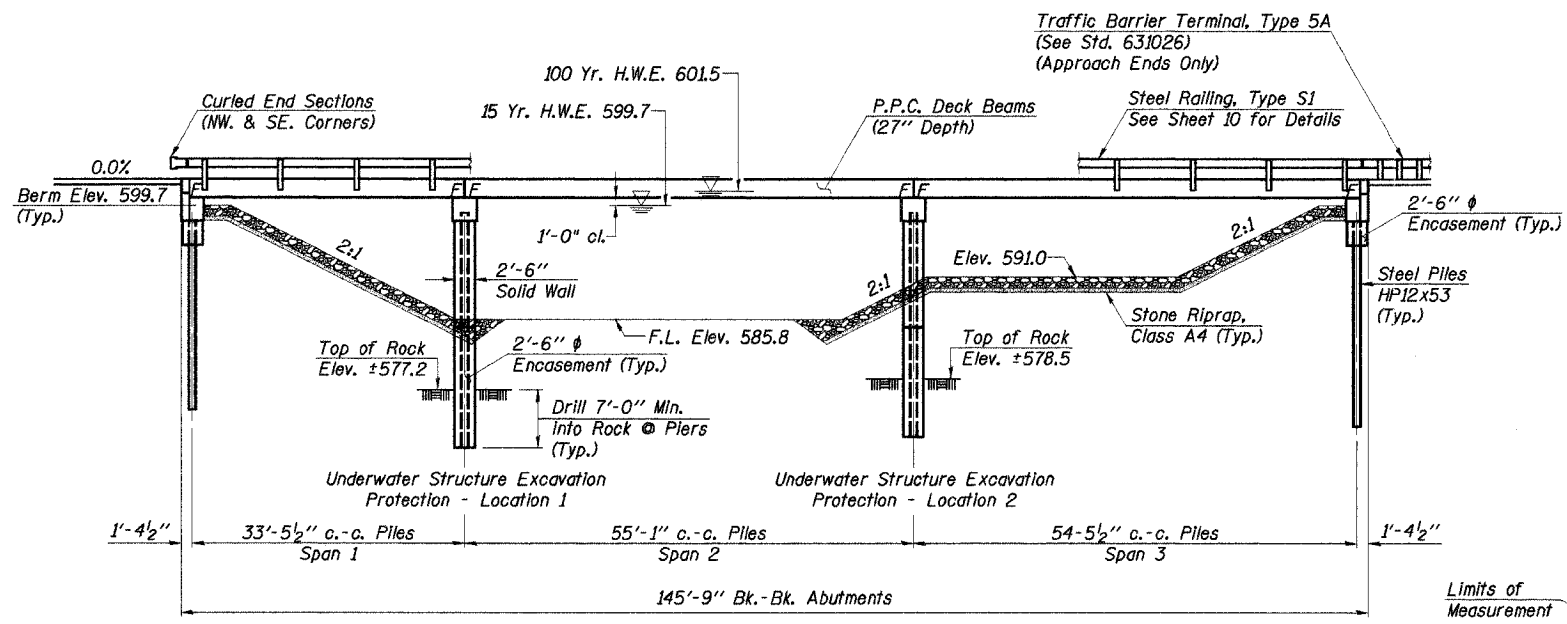


ROUTE NO.	SECTION	COUNTY	TOTAL SHEETS	SHEET NO.
T.R. 133	05-1717-00-BR	SHELBY	21	7
ROAD DIST.	ILLINOIS	RIDGE	CONTRACT NO. 95484	



DESIGNED	F.J.S.
CHECKED	A.R.K.
DRAWN	S.A.P.
CHECKED	A.R.K. & F.J.S.

The requirements of the I.D.N.R. - Division of Water Resources have been fulfilled in accordance with Statewide Permit No. 2

WATERWAY INFORMATION

Drainage Area	44.40 Sq. Mi.
Existing Opening (15 Yr.)	949 Sq. Ft. (Bridge)
	525 Sq. Ft. (Roadway)
Required Opening (15 Yr.)	1248 Sq. Ft.
Proposed Opening (15 Yr.)	1248 Sq. Ft.
Design Discharge (15 Yr.)	4418 C.F.S.
Created Head (15 Yr.)	0.3 Ft.
100 Year Discharge	6952 C.F.S.
100 Yr. Created Head	0.9 Ft.
100 Yr. H.W.E.	601.5 Ft.
DESIGN H.W.E	599.7 Ft.

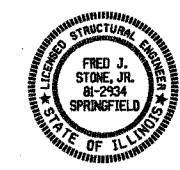
DESIGN STRESSES

$f'_c = 5,000$ p.s.i. (Prestressed Beams)
 $f'_{cl} = 4,000$ p.s.i. (Prestressed Beams)
 $f'_c = 1,400$ p.s.i. (Concrete)
 $f'_s = 270,000$ p.s.i. (Prestressed Strands)
 $f'_{sl} = 201,960$ p.s.i. (Prestressed Strands)
 $f'_s = 24,000$ p.s.i. (Reinf. Bars -- Field Units)
 $f'_y = 60,000$ p.s.i. (Reinf. Bars -- Field Units)
 $n = 9$ (Concrete)

LOADING HS20-44
 Design Specifications: 2002 AASHTO
 25# / Sq. Ft. Included in dead load for future wearing surface.

"I certify that to the best of my knowledge, information and belief, this bridge design is structurally adequate for the design loading shown on the plans. The design is an economical one for the style of structure and complies with requirements of the current 'AASHTO Standard Specifications for Highway Bridges'."

Fred J. Stone, Jr. (5-10-06)
 ILLINOIS STRUCTURAL NO. 2934 (Expires 11/30/06)



GENERAL NOTES

See Proposal for Boring data.

The Contractor shall drive one steel test pile in a permanent location at each abutment as directed by the Engineer, before ordering the remainder of piles.

Layout of slope protection system may be varied in the field to suit ground conditions as directed by the Engineer.

Excavation for structures shall be considered as included in the contract unit price for the class of concrete involved.

ROBINSON CREEK
 BUILT 200_ BY
 SHELBY COUNTY
 SEC. 05-1717-00-BR
 F.A. PROJ. BROS-173(143)
 STR. NO. 087-3548 LOADING HS20

LETTERING FOR NAME PLATE
 See Std. 515001

TOTAL BILL OF MATERIAL

ITEM	UNIT	SUPER	SUB	TOTAL
Precast Prestressed Concrete Deck Beams (27" Depth)	Sq. Ft.	3,456		3,456
Concrete Structures	Cu. Yd.		99.0	99.0
Reinforcement Bars	Pound		8,230	8,230
Steel Railing, Type S1	Foot	289		289
Name Plates	Each		1	1
Furnishing Steel Piles HP12x53	Foot		435	435
Driving Steel Piles	Foot		150	150
Test Pile Steel HP12x53	Each		2	2
Stone Riprap, Class A4	Ton		333	333
Filter Fabric	Sq. Yd.		489	489
Concrete Encasement	Cu. Yd.		17.0	17.0
Underwater Str. Excavation Protection - Location 1	Each		1	1
Underwater Str. Excavation Protection - Location 2	Each		1	1
Setting Piles in Rock	Cu. Yd.		10	10

GENERAL PLAN & ELEVATION

SECTION 05-1717-00-BR
 RIDGE ROAD DISTRICT
 SHELBY COUNTY
 STATION 15+02.38

4440 ASH GROVE
 SPRINGFIELD, IL 62711
 (217) 793-8600
 oasinc@inameitbb.com

OZYURT AND STONE, INC.
 CONSULTING ENGINEERS

JOB NO.: 0504
 FILE: 0504GPE.DGN
 DATE: 02/14/06