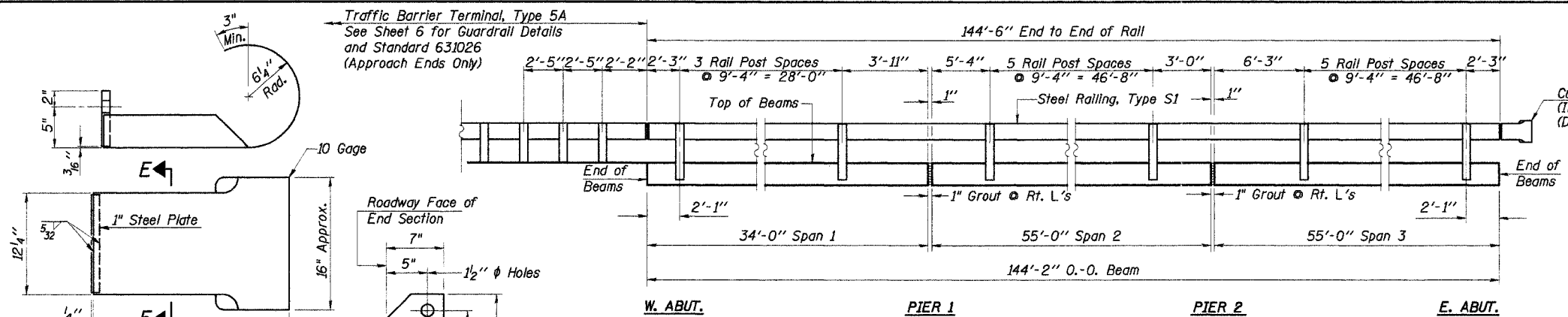
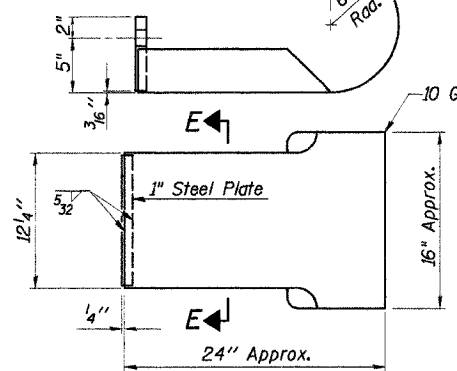


ROUTE NO.	SECTION	COUNTY	TOTAL SHEETS	SHEET NO.
T.R. 133	05-1717-00-BR	SHELBY	21	10
ROAD DIST.	ILLINOIS	RIDGE		

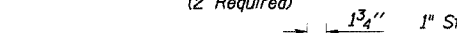
CONTRACT NO. 95484



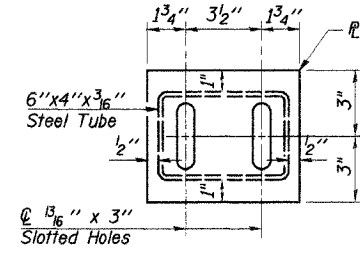
CURLED END SECTION DETAILS
(2 Required)



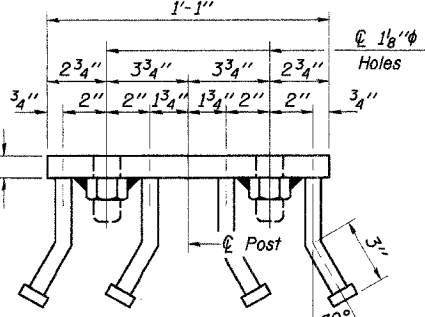
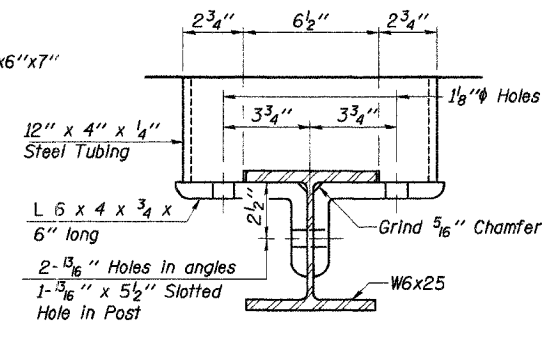
SECTION E-E



DETAIL "D"

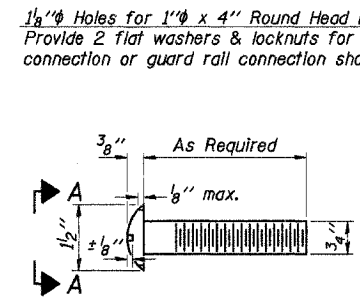


SECTION B-B

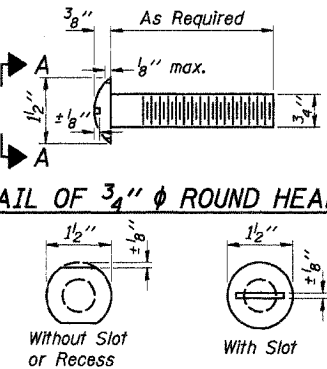


VIEW C-C

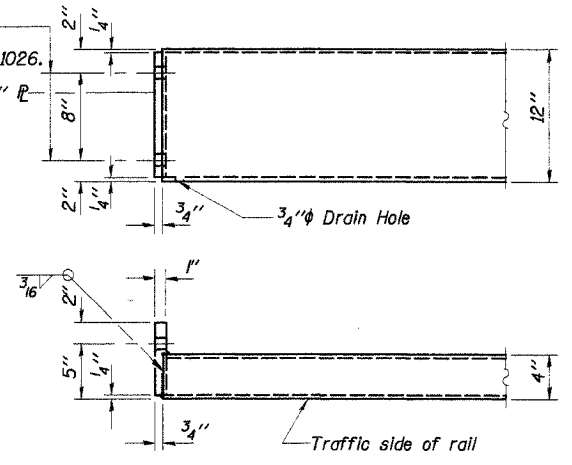
DETAIL OF 3/4" φ ROUND HEAD BOLT



VIEW A-A



END OF RAIL DETAILS



BILL OF MATERIAL

Item	Unit	Quantity
Steel Railing, Type S1	Foot	289

STEEL RAILING, TYPE S1

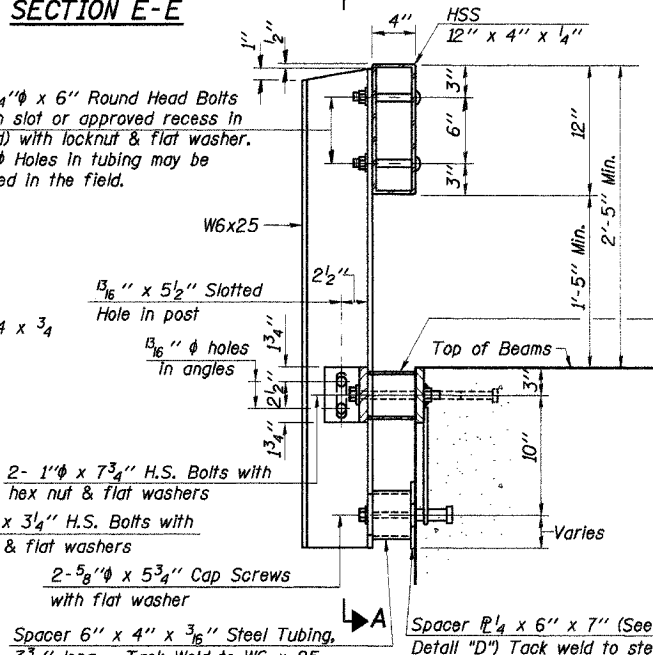
SECTION 05-1717-00-BR
RIDGE ROAD DISTRICT
SHELBY COUNTY
STATION 15+02.38

4440 ASH GROVE
SPRINGFIELD, IL 62711
(217) 793-8600
oasinc@insightbb.com

OZYURT AND STONE, INC.
CONSULTING ENGINEERS

JOB NO.: 0504
FILE: 0504RAIL.DGN
DATE: 02/14/06

SECTION AT RAIL POST

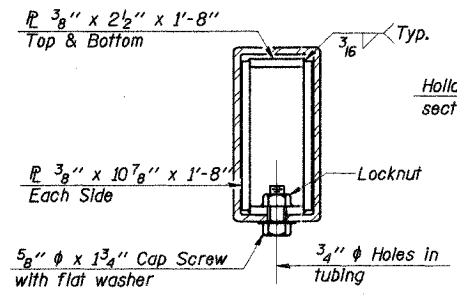


ANCHOR DEVICE

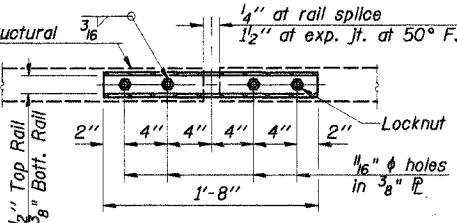
* Threaded areas shall be plugged or blocked off during casting of beam.

** Whenever the lower insert assemblies interfere with strand locations, the #3 bars shall be cut and adjusted in order to allow raising or lowering of the lower inserts. Maximum adjustment not to exceed 1/2". (Precast Prestressed Concrete Deck Beam Bridges Only)

SECTIONS AT RAIL SPLICE



PLAN-BOTT. SPLICE P TYPICAL



1/4" SHIM PLATE

Note: For multi-span bridges, sufficient 1/4" x 6" x 1'-4" galvanized steel shims shall be provided to align rail between adjacent spans. Cost Incidental to Steel Railing.

DESIGNED	F.J.S.
CHECKED	A.R.K.
DRAWN	S.A.P.
CHECKED	A.R.K. & F.J.S.