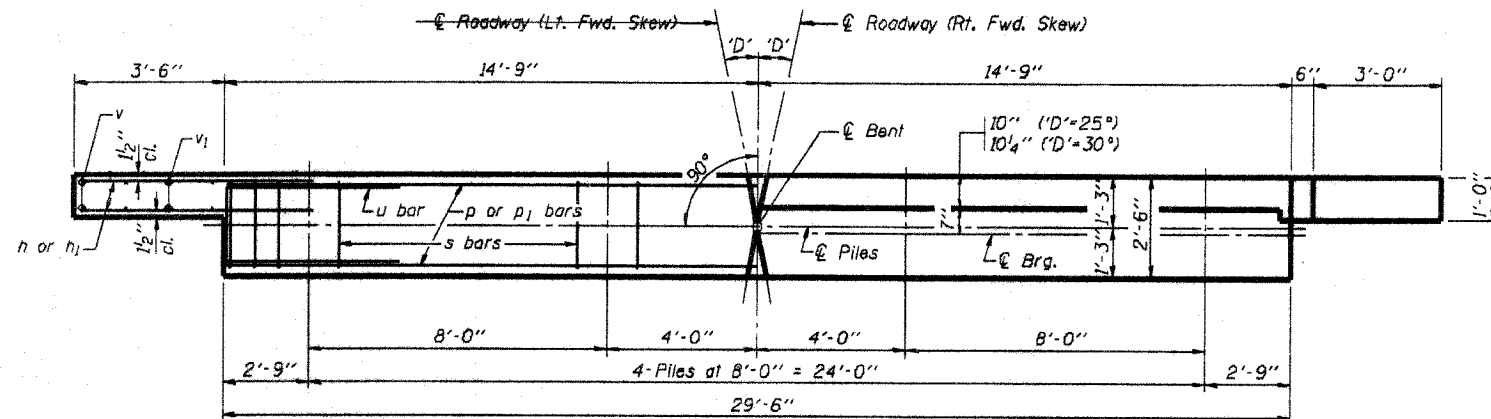
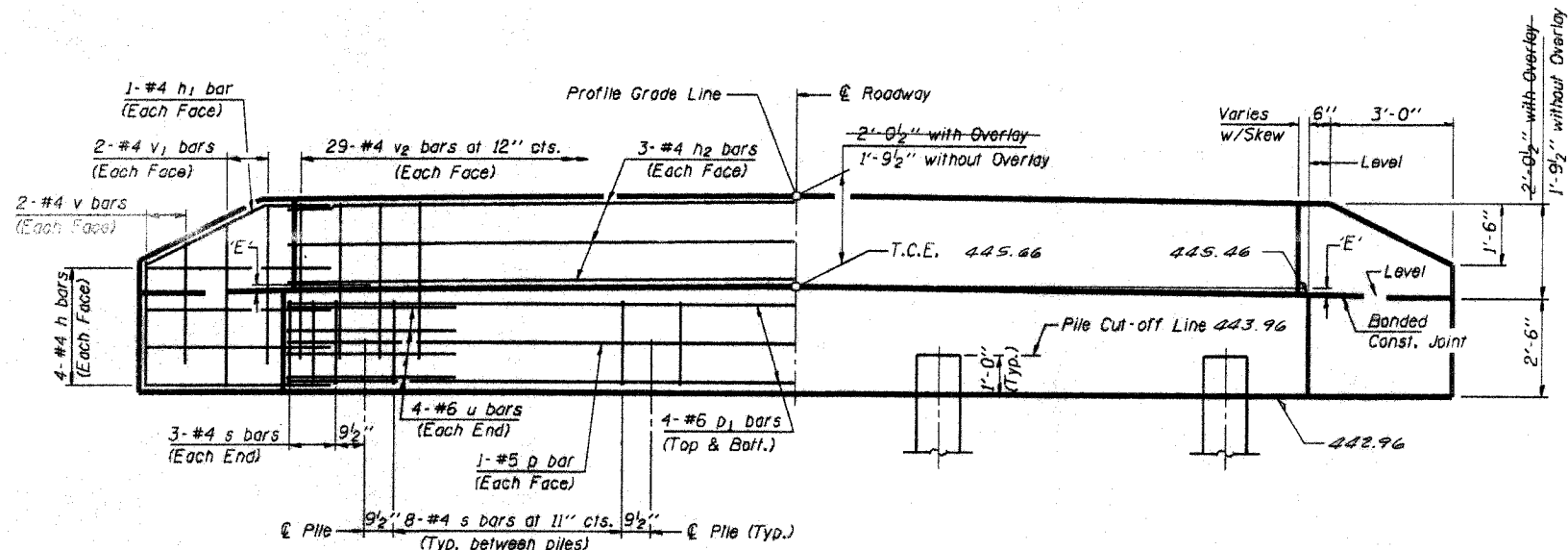


F.A.S. ROUTE NO.	SECTION	COUNTY	TOTAL SHEETS	SHEET
03-0718-00-82	WAYNE	11	8	
STA.	TO STA.			
FED. ROAD DIST. NO.	ILLINOIS	PROJECT	8205-191 (5)	



**PLAN**  
(D = Designated Skew Angle)



**ELEVATION**

**DIMENSION 'E'**

GRADE	'D' = 25°		'D' = 30°	
	UPGRADE END	DOWNGRADE END	UPGRADE END	DOWNGRADE END
0%	2 1/2"	2 1/2"	2 3/8"	2 3/8"
Over 0% to 1%	2 5/8"	2 7/8"	2"	2 7/8"
Over 1% to 2%	1 3/8"	3 5/8"	1"	3 3/4"
Over 2% to 3%	5/8"	4 3/8"	1/2"	4 5/8"
Over 3% to 4%	0"	5/8"		

**NOTES**

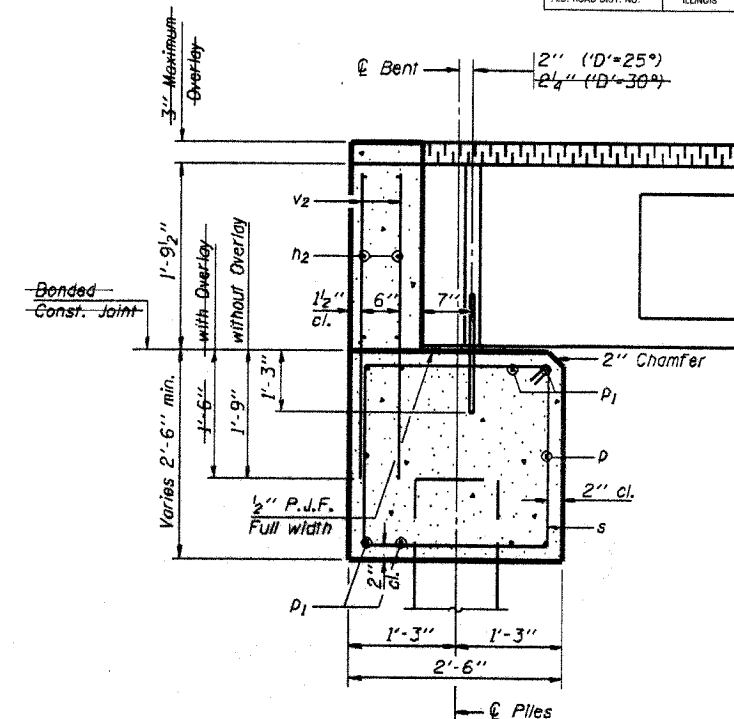
- The Backwall and the portion of the Wingwalls above the bonded construction joint shall be cast against the in-place beam.
- Reinforcement bars shall conform to A.A.S.H.T.O. M-31 OR M-322, Grade 60.

**MAXIMUM PILE LOADS**

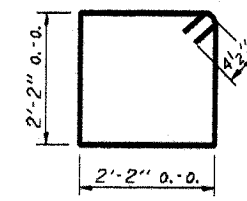
SPAN	TONS
30'	27
35'	30
40'	32
50'	37

**DESIGN STRESSES**

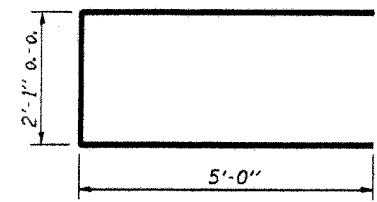
f'c = 3,500 psi  
fy = 60,000 psi



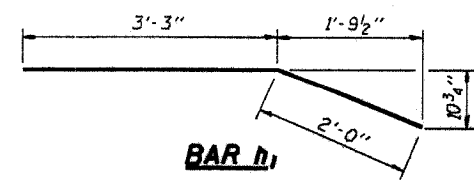
**SECTION THRU ABUTMENT**  
(At Right Angles)



**BAR S**



**BAR U**



**BAR h1**

**BILL OF MATERIAL FOR ONE ABUTMENT**

Bar	No.	Size	Length	Shape
h	16	#4	5'-0"	—
h1	4	#4	5'-3"	—
h2	6	#4	29'-2"	—
d	2	#5	29'-2"	—
d1	8	#6	29'-2"	—
s	30	#4	9'-5"	D
u	8	#6	12'-1"	U
v	8	#4	2'-8"	—
v1	8	#4	3'-8"	—
v2	58	#4	3'-5"	—
Concrete Structures			10.1 Cu. Yds.	
Reinforcement Bars			1100 Lbs.	

Illinois Department of Transportation  
 PASSED November 1, 1995  
 Approved November 1, 1995  
 Engineer of Bridges and Structures

**P.P.C. DECK BEAMS**  
**PILE BENT ABUTMENT**  
 24' RDWY. 21" BMS. 'D' = 25° OR 30°  
 STANDARD CA-2421-30