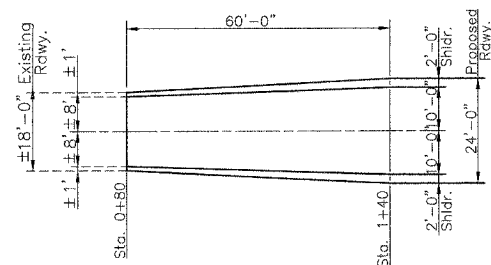
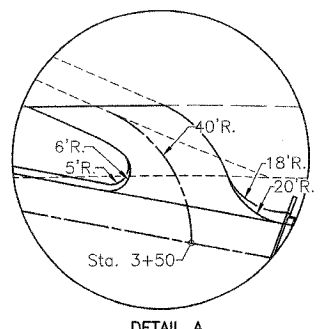
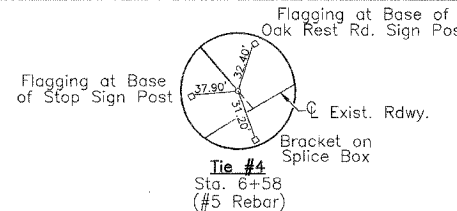
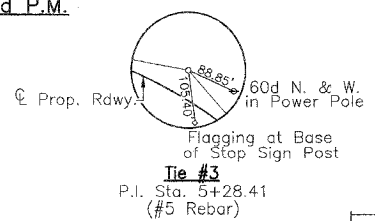
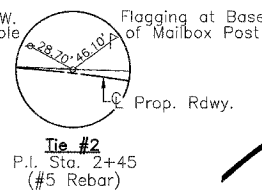
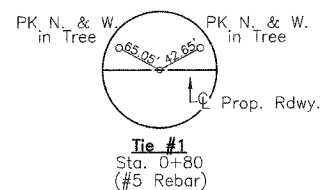


SECTION 13 T. 7 N. R.10 W. 3rd P.M.

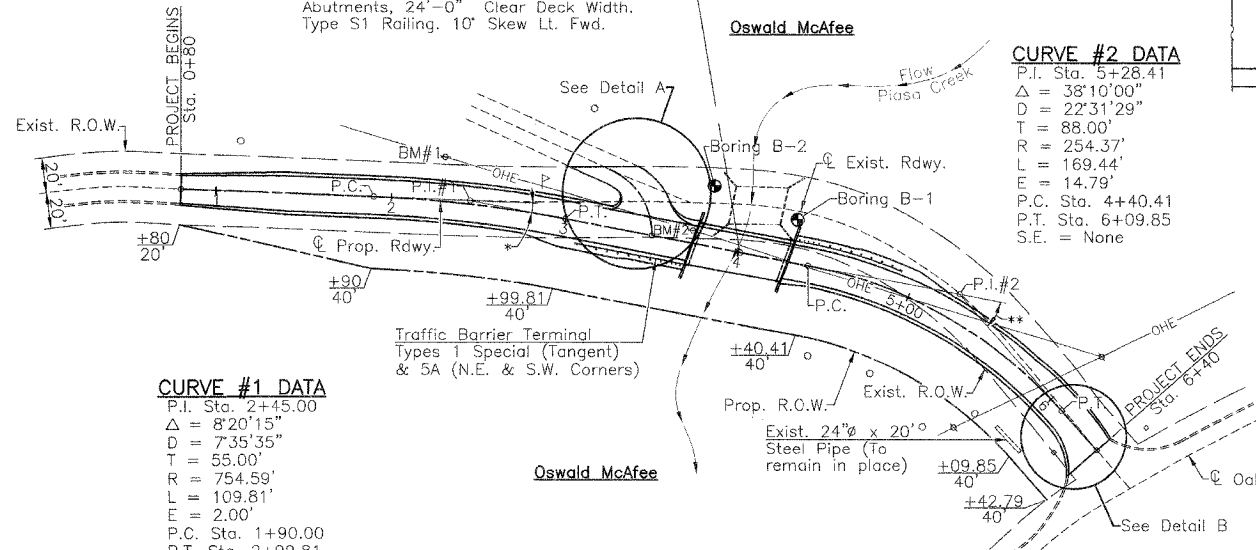
RTE.	SECTION	COUNTY	TOTAL SHEETS	SHEET NO.
T.R.137	*	JERSEY	9	3
FEDERAL AID PROJECT BROS-083(038)				
* 04-07118-00-BR				

CONTRACT NO. 97277



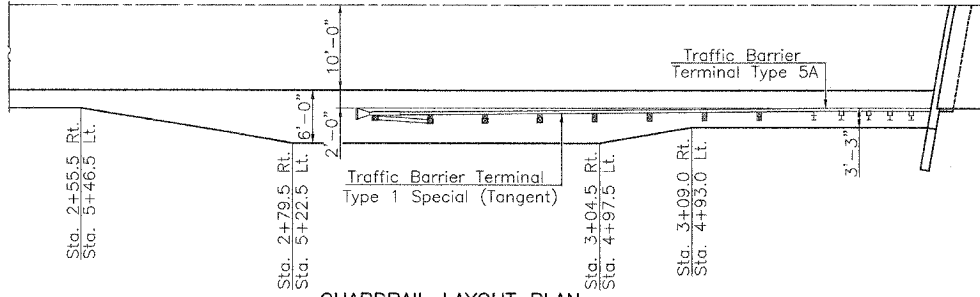
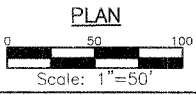
ROADWAY TRANSITION DETAIL

Sta. 4+01.00 - \bar{C} Rdwy. at \bar{C} Structure
 Proposed Structure: Single Span Precast Prestressed Concrete Deck Beams (27") on Open Concrete Abutments. 56'-0" Bk.-Bk. Abutments, 24'-0" Clear Deck Width. Type S1 Railing. 10' Skew Lt. Fwd.

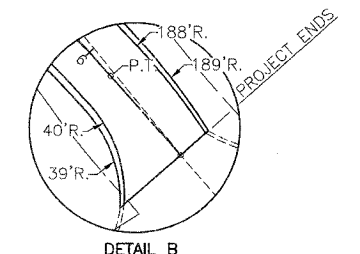


CURVE #1 DATA
 P.I. Sta. 2+45.00
 $\Delta = 8'20'15''$
 $D = 7'35'35''$
 $T = 55.00'$
 $R = 754.59'$
 $E = 109.81'$
 $F = 2.00'$
 P.C. Sta. 1+90.00
 P.T. Sta. 2+99.81
 $S.E. = 0.04\%$
 S.E. Attained: Sta. 1+31.00 to Sta. 2+15.00
 Sta. 2+74.81 to Sta. 3+58.81

CURVE #2 DATA
 P.I. Sta. 5+28.41
 $\Delta = 38'10'00''$
 $D = 22'31'29''$
 $T = 88.00'$
 $R = 254.37'$
 $L = 169.44'$
 $E = 14.79'$
 P.C. Sta. 4+40.41
 P.T. Sta. 6+09.85
 $S.E. = \text{None}$



GUARDRAIL LAYOUT PLAN (N.E. & S.W. Corners)



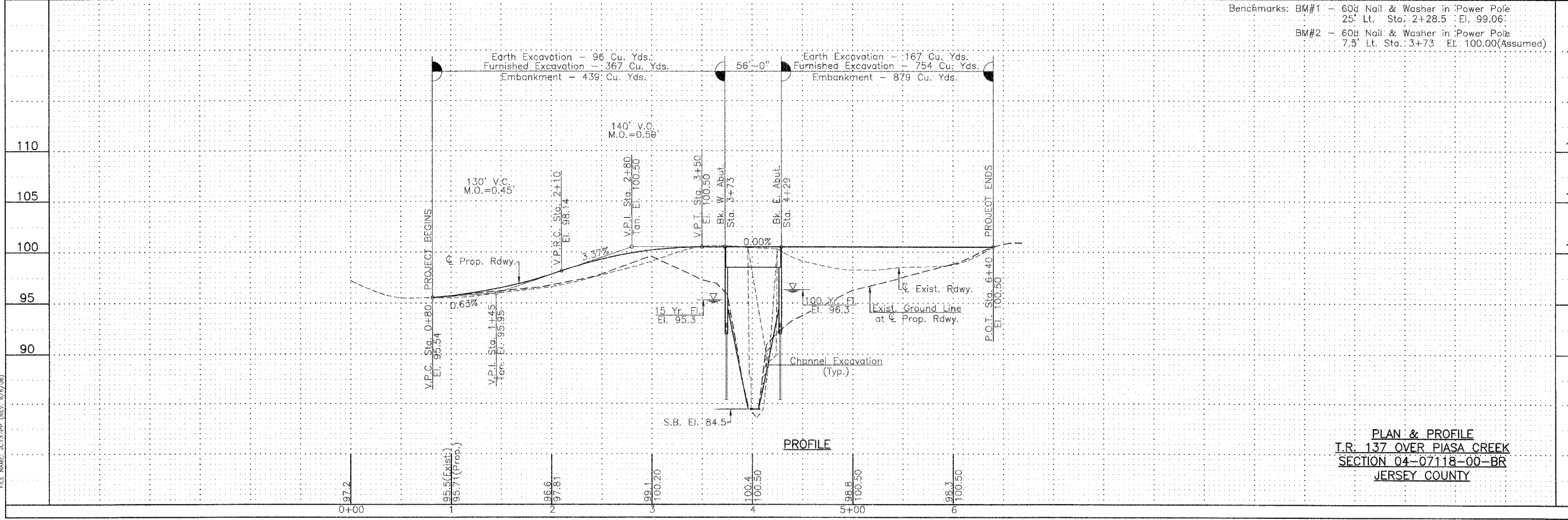
DETAIL B

UTILITIES
 S.B.C.
 Collinsville, Illinois 62234
 1-800-244-4444
 M.J.M. Electric Cooperative, Inc.
 P.O. Box 80
 Carlinville, Illinois 62626
 1-217-854-3137
 Jersey County Rural Water
 1009 E. Shipman Road
 Jerseyville, Illinois 62052
 1-618-498-9534

Seeding: Sta. 0+80 to Sta. 6+40 R.O.W. to R.O.W. - 0.6 Acre
 Tree Removal - Sta. 3+70 to Sta. 6+10 Rt. - 0.20 Acre

Benchmarks: BM#1 - 60d Nail & Washer in Power Pole 25' Lt. Sta. 2+28.5 El. 99.06
 BM#2 - 60d Nail & Washer in Power Pole 7.5' Lt. Sta. 3+73 El. 100.00 (Assumed)

FILE NAME: JCI17PP (REV. 5/6/98)



PLAN & PROFILE
 T.R. 137 OVER PIASA CREEK
 SECTION 04-07118-00-BR
 JERSEY COUNTY