

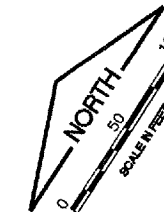
AU062

PATH: K:\042850400\DRAW\SHEETS  
 FILE: swppp-malsr-33.DWG  
 UPDATE BY: .  
 SURVEY BOOK #  
 XREF DWG:  
 XREF DWG:  
 DATE: .

REVISIONS

NUMBER	BY	DATE



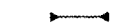

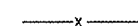
0 1 2  
 THIS BAR IS EQUAL TO 2"  
 AT FULL SCALE (34X22).

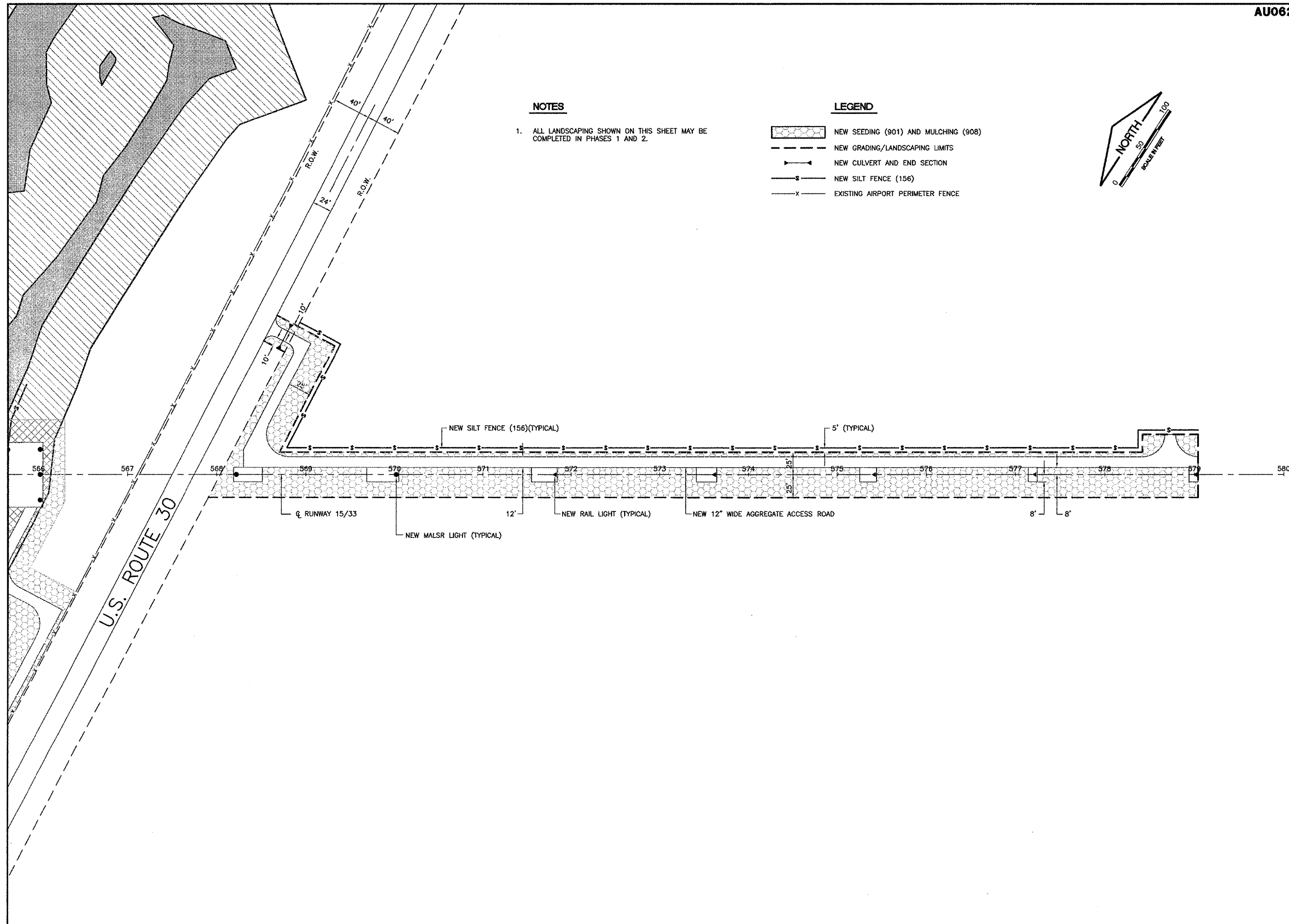


NOTES

1. ALL LANDSCAPING SHOWN ON THIS SHEET MAY BE COMPLETED IN PHASES 1 AND 2.

LEGEND

-  NEW SEEDING (901) AND MULCHING (908)
-  NEW GRADING/LANDSCAPING LIMITS
-  NEW CULVERT AND END SECTION
-  NEW SILT FENCE (156)
-  EXISTING AIRPORT PERIMETER FENCE



**AURORA MUNICIPAL AIRPORT  
 AURORA, ILLINOIS  
 CONSTRUCT RUNWAY 33 ILS,  
 RELOCATE RUNWAY 9 LOCALIZER**

**RUNWAY 33 MALS R STORMWATER  
 POLLUTION PREVENTION PLAN - SHEET 2**

© Copyright CMT, Inc.  
**CMT**  
 CRAWFORD, MURPHY & TILLY, INC.  
 CONSULTING ENGINEERS  
 License No. 184-000613

DESIGN BY:	CAL
DRAWN BY:	JRO
CHECKED BY:	CAL
APPROVED BY:	
DATE:	05/12/06
JOB No:	04285-04

ILLINOIS PROJECT: ARR-3468  
 A.I.P. PROJECT: 3-17-0003-B31  
**FINAL SUBMITTAL**