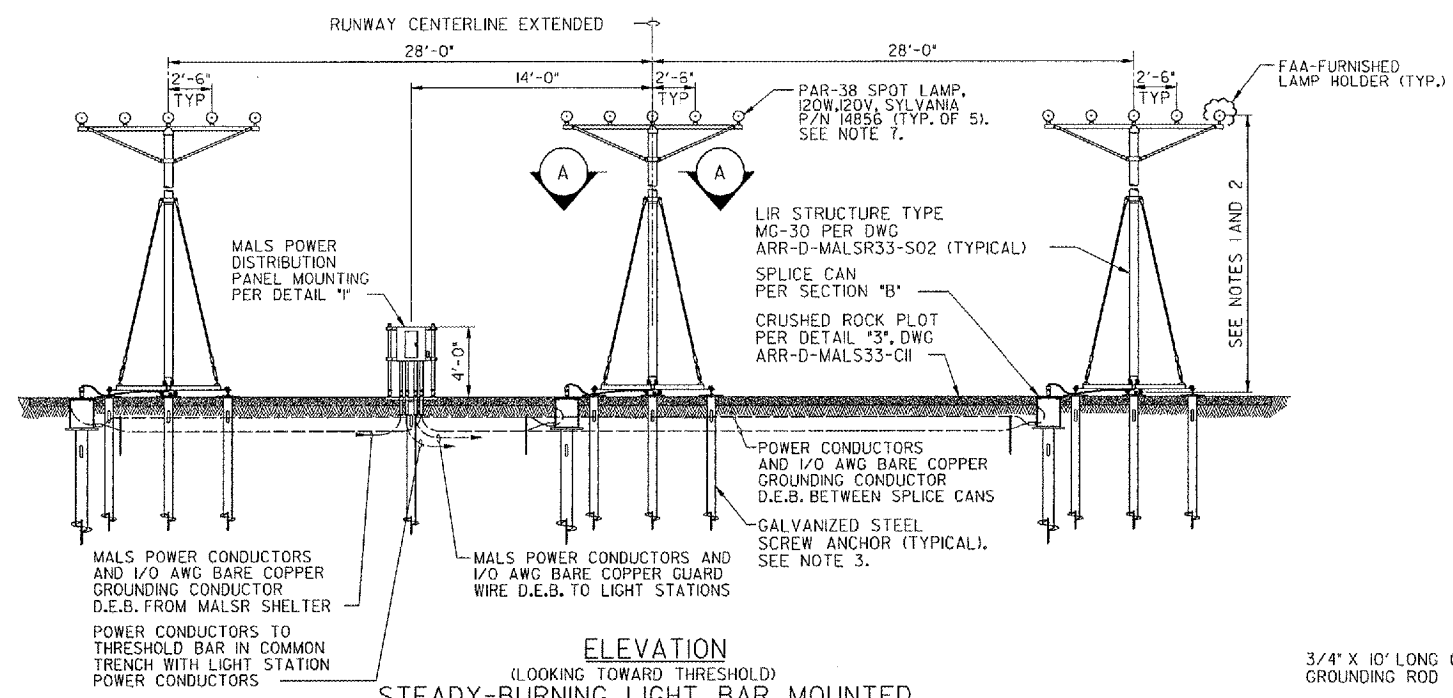
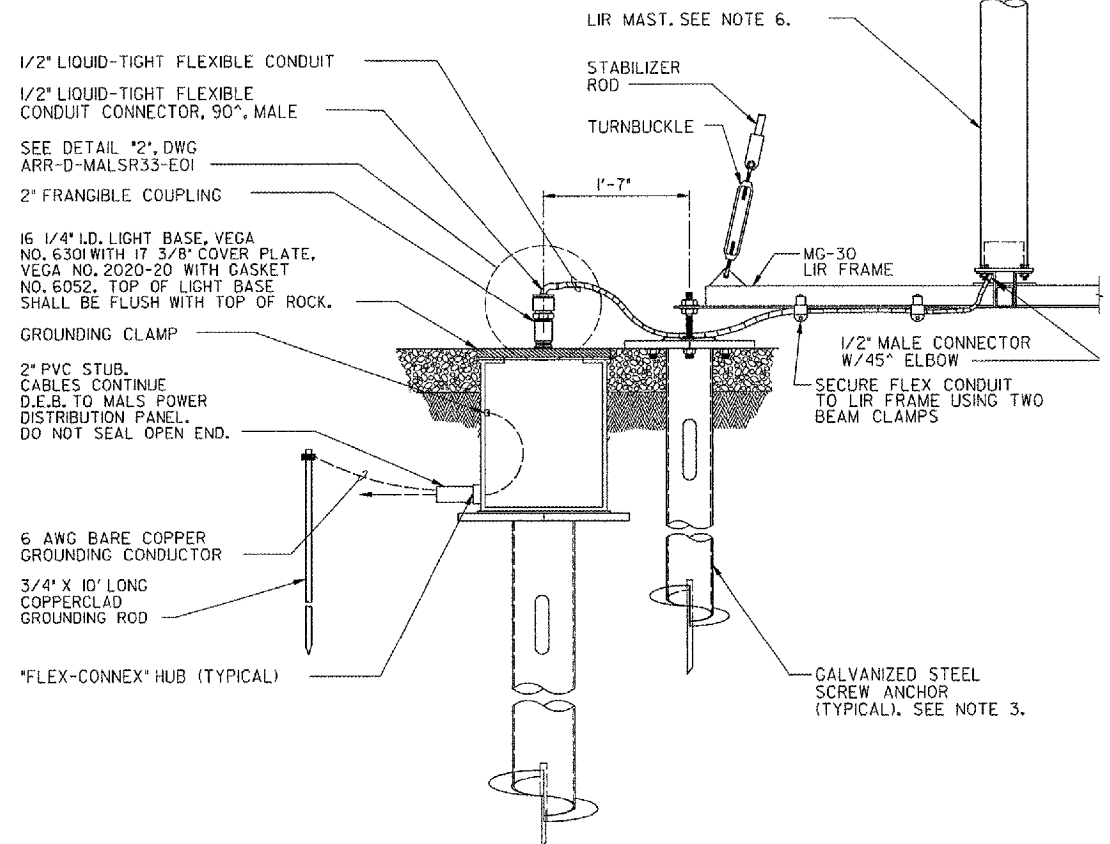


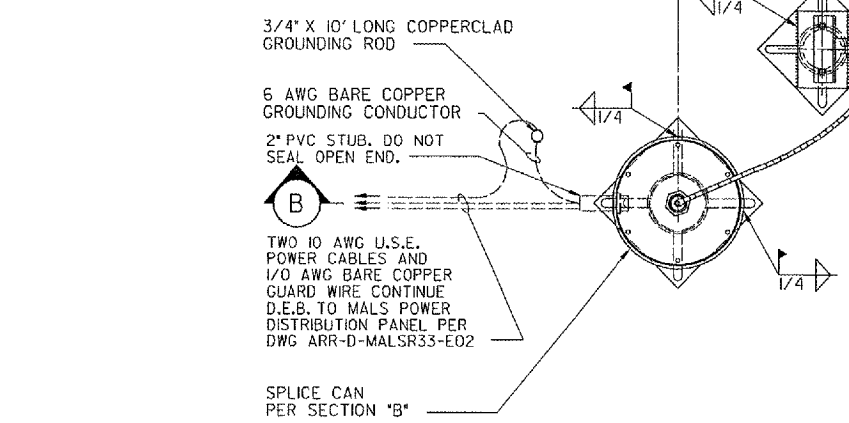
THIS DRAWING PRODUCED ON THE GREAT LAKES REGION MICROSTATION SYSTEM



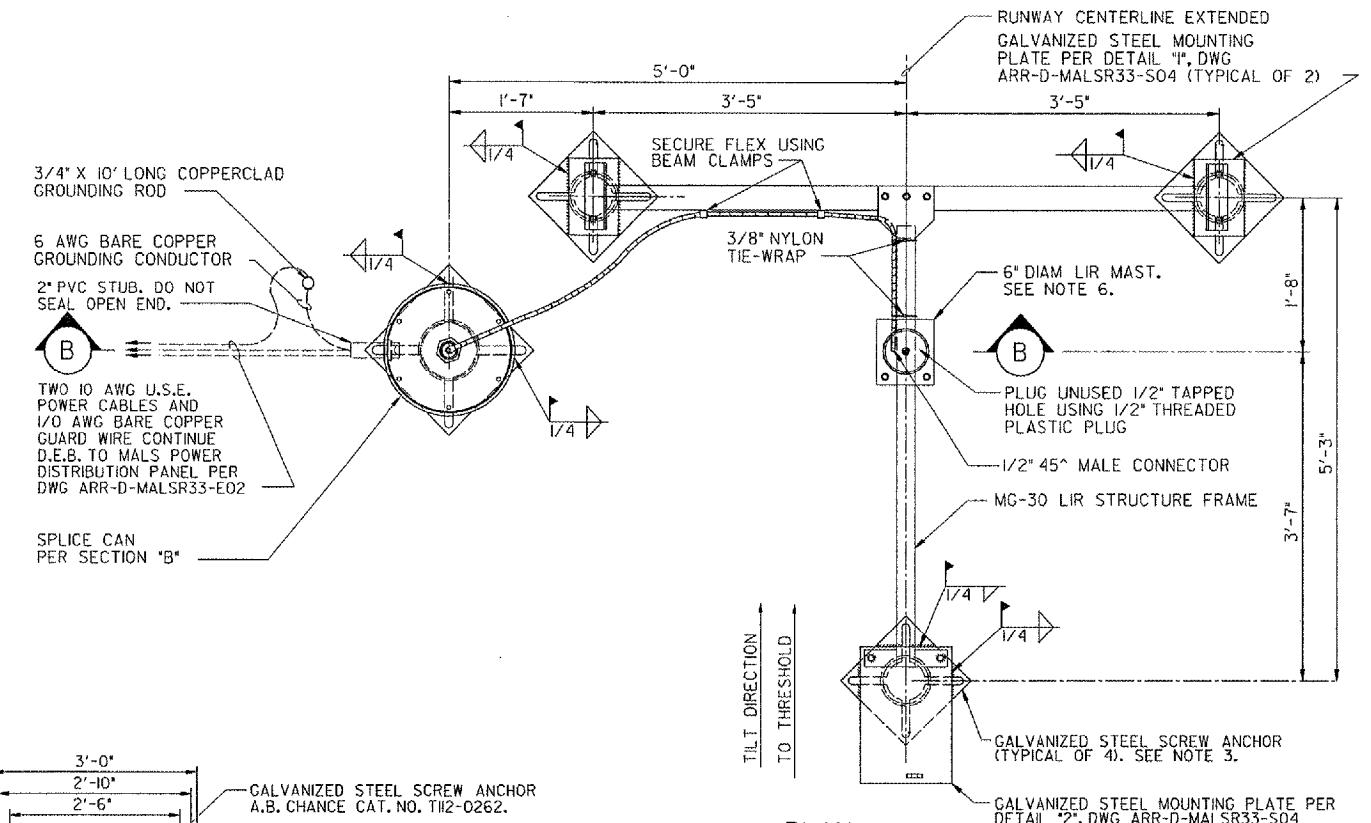
**ELEVATION**  
(LOOKING TOWARD THRESHOLD)  
**STEADY-BURNING LIGHT BAR MOUNTED ON MG-30 LIR TOWER**  
SCALE IN FEET



**SPLICE CAN FOUNDATION**  
SECTION B  
SCALE IN FEET



**PLAN**  
**MALS POWER DISTRIBUTION PANEL MOUNTING CHANNEL DETAIL**  
SECTION 1  
SCALE IN FEET



**PLAN**  
**MG-30 LIR STRUCTURE FOUNDATION LAYOUT**  
SECTION A  
SCALE IN FEET

**NOTES:**

- SEE DWG ARR-D-MALSR33-CO1 FOR LAMP CENTERLINE AND FOUNDATION TOP ELEVATIONS.
- LIR STRUCTURES SHALL PIVOT TOWARD THE RUNWAY THRESHOLD. SEE NOTE 1, DWG ARR-D-MALSR33-SO1 FOR LIR TUBE CUTTING LENGTH CALCULATION AND MG-20 LIR STRUCTURE ASSEMBLY DETAILS.
- SCREW ANCHOR FOUNDATIONS SHALL CONSIST OF A.B. CHANCE 'INSTANT' FOUNDATIONS, CAT. NO. CT112-0262 FOR LIR TOWER AND WINCH FOUNDATIONS, AND CAT. NO. C112-42NG4VP FOR SPLICE CAN FOUNDATION. SEE SPECIFICATION FAA-GL-918C, SECTION 13B FOR INSTRUCTIONS REGARDING INSTALLATION OF THE ANCHORS.
- EXCAVATE 2' DEEP HOLE AT SPLICE CAN LOCATION SHOWN, DRIVE SCREW ANCHOR SUCH THAT TOP OF PLATE IS 20" BELOW FINISHED GRADE, WELD SPLICE CAN BASE TO THE TOP OF THE ANCHOR MOUNTING PLATE AS SHOWN, WITH FLEX-CONNEX GROMMETS ORIENTED PROPERLY.
- ALL CONNECTIONS TO GROUNDING RODS SHALL BE MADE USING EXOTHERMIC WELDS PER SPECIFICATIONS.
- FOUNDATION SHALL BE CONSTRUCTED SUCH THAT LIR MAST IS CENTERED AT THE RUNWAY STATION AND OFFSET FROM RUNWAY CENTERLINE AS SHOWN.
- SEE DETAILS \*3\* AND \*5\*, DWG ARR-D-MALSR33-E01 FOR LIR LIGHT BAR WIRING AND LAMPHOLDER INSTALLATION DETAILS.

CONTRACTOR SHALL SUBMIT REQUESTS FOR SUBSTITUTION OF SPECIFIC MANUFACTURER'S ITEMS SHOWN PER PARAGRAPH 10F OF THE SPECIAL SPECIFICATIONS.

REV	DATE	DESCRIPTION	JCN	REDLINE DATE	APPD

SHEET 30 OF 67

DEPARTMENT OF TRANSPORTATION  
FEDERAL AVIATION ADMINISTRATION  
GREAT LAKES REGION CHICAGO, ILLINOIS

MALSR  
FOUNDATION DETAILS FOR STEADY-BURNING  
LIGHT BARS AT STATION 11+00

AURORA		AURORA MUNICIPAL AIRPORT		IL
REVIEWED BY	SUBMITTED BY	APPROVED BY		
DESIGNED BY	TAD	PLATFORM MGR,	CLELAND MICHEEL	
DATE	02/27/2006	JCN		
DRAWN	TAD	ISSUED BY	CHICAGO NAS	
CHECKED	EGS	IMPLEMENTATION	CENTER	
		DRAWING NO	ARR-D-MALSR33-C07	
		REV		

K:\Aurora\0428504\Drawings\Sheets\FAA LS DRN's\_CMT mod. 5-10-06\ARR-D-MALSR33-007.dgn  
 5/10/2006 5:19:05 PM NAME  
 00757