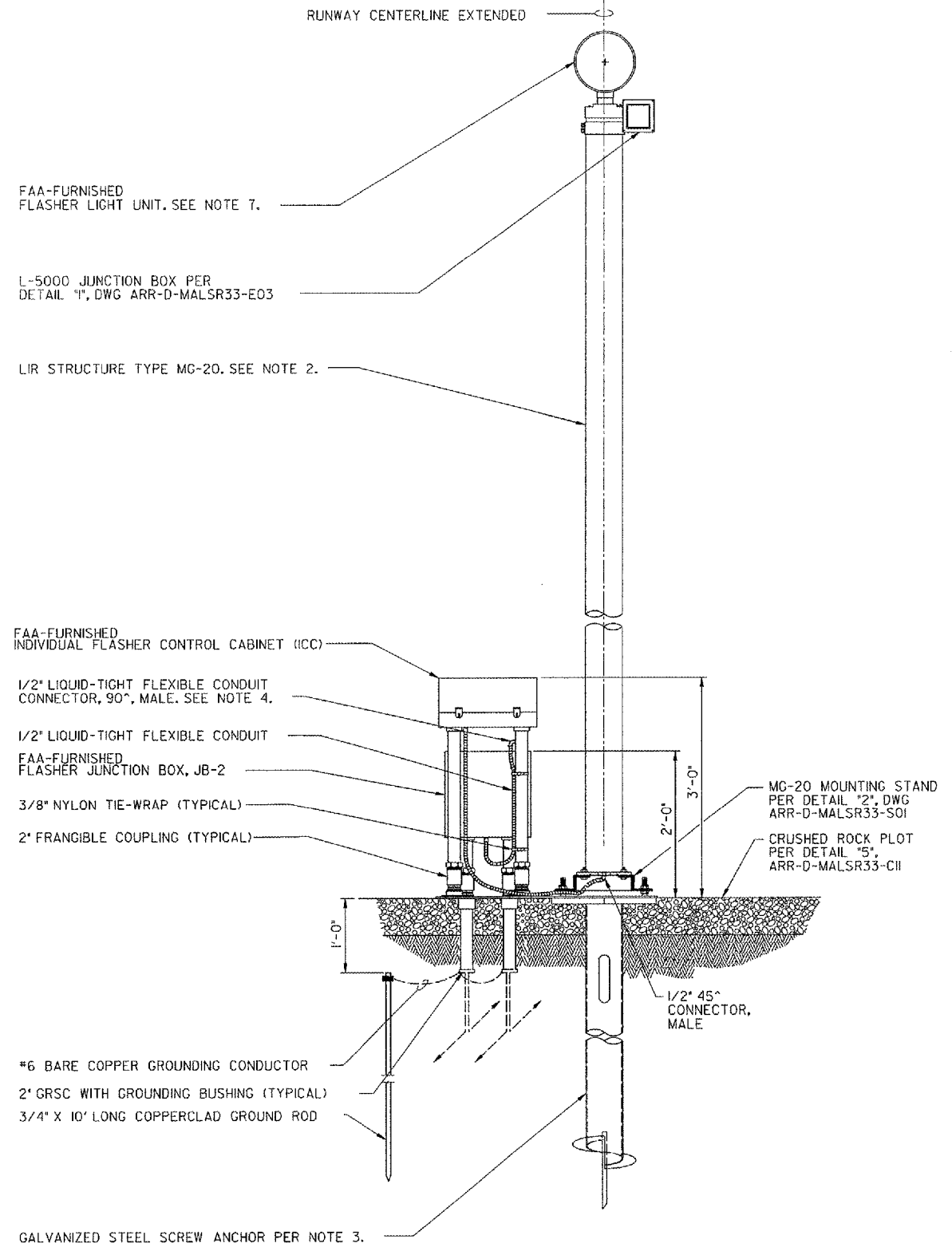


THIS DRAWING PRODUCED ON THE GREAT LAKES REGION MICROSTATION SYSTEM

8 7 6 5 4 3 2 1

H  
G  
F  
E  
D  
C  
B  
A

H  
G  
F  
E  
D  
C  
B  
A



FAA-FURNISHED FLASHER LIGHT UNIT. SEE NOTE 7.

L-5000 JUNCTION BOX PER DETAIL "1", DWG ARR-D-MALSR33-E03

LIR STRUCTURE TYPE MG-20. SEE NOTE 2.

FAA-FURNISHED INDIVIDUAL FLASHER CONTROL CABINET (ICC)

1/2" LIQUID-TIGHT FLEXIBLE CONDUIT CONNECTOR, 90°, MALE. SEE NOTE 4.

1/2" LIQUID-TIGHT FLEXIBLE CONDUIT

FAA-FURNISHED FLASHER JUNCTION BOX, JB-2

3/8" NYLON TIE-WRAP (TYPICAL)

2" FRANGIBLE COUPLING (TYPICAL)

#6 BARE COPPER GROUNDING CONDUCTOR

2" GRSC WITH GROUNDING BUSHING (TYPICAL)

3/4" X 10" LONG COPPERCLAD GROUND ROD

GALVANIZED STEEL SCREW ANCHOR PER NOTE 3.

RUNWAY CENTERLINE EXTENDED

FLASHER POWER AND CONTROL CABLES IN COMMON TRENCH D.E.B. FROM FLASHER JUNCTION BOX AT PREVIOUS LIGHT STATION OR MALSR EQUIPMENT SHELTER PER DWG ARR-D-MALSR33-C02.

1/0 AWG BARE COPPER GUARD WIRE

3/4" X 10" LONG COPPERCLAD GROUNDING ROD. SEE NOTE 5.

6 AWG BARE COPPER GROUNDING CONDUCTOR. SEE NOTE 8.

2" GALVANIZED RIGID STEEL CONDUIT COUPLING WELDED TO EDGE OF MOUNTING PLATE (FLUSH WITH TOP OF MOUNTING PLATE)

2" GALVANIZED FLOOR FLANGE, WELDED TO PLATE (TYPICAL)

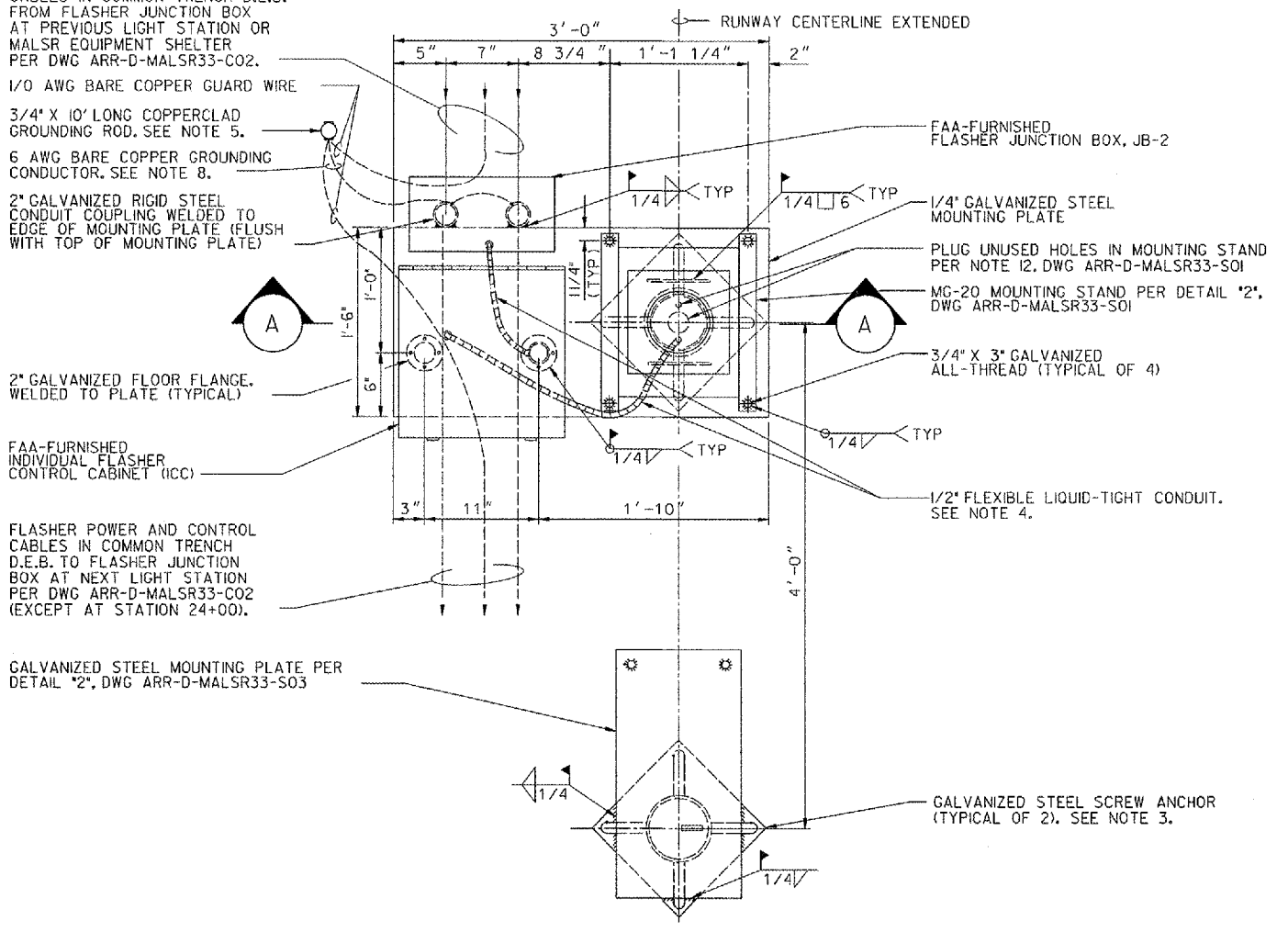
FAA-FURNISHED INDIVIDUAL FLASHER CONTROL CABINET (ICC)

FLASHER POWER AND CONTROL CABLES IN COMMON TRENCH D.E.B. TO FLASHER JUNCTION BOX AT NEXT LIGHT STATION PER DWG ARR-D-MALSR33-C02 (EXCEPT AT STATION 24+00).

GALVANIZED STEEL MOUNTING PLATE PER DETAIL "2", DWG ARR-D-MALSR33-S03

NOTES:

1. SEE DWG ARR-D-MALSR33-COIFOR LAMP CENTERLINE AND FOUNDATION TOP ELEVATIONS.
2. LIR STRUCTURES SHALL PIVOT TOWARD THE RUNWAY THRESHOLD. SEE NOTE 1, DWG ARR-D-MALSR33-S01 FOR LIR TUBE CUTTING LENGTH CALCULATION AND MG-20 LIR STRUCTURE ASSEMBLY DETAILS
3. ALL SCREW ANCHOR FOUNDATIONS SHALL CONSIST OF A.B. CHANCE 'INSTANT' FOUNDATIONS, CAT. NO. CT112-0262. SEE SPECIFICATION FAA-GL-918C, SECTION 13B FOR INSTRUCTIONS REGARDING INSTALLATION OF THE ANCHOR.
4. DRILL HOLE IN SIDE OF 2" EMT CONDUIT LEG OF ICC AND INSTALL 90° 1/2" FLEX CONDUIT CONNECTOR WITH 1/2" FLEX CONDUIT FROM JUNCTION BOX. ROUTE POWER AND CONTROL CABLES THROUGH FLEX CONDUIT, INTO EMT LEG AND INTO ICC. SEAL PENETRATION USING SILICONE SEALER.
5. ALL CONNECTIONS TO GROUNDING RODS SHALL BE MADE USING EXOTHERMIC WELDS PER SPECIFICATIONS.
6. FOUNDATION SHALL BE CONSTRUCTED SUCH THAT LIR MAST IS CENTERED AT THE RUNWAY STATION SHOWN ON DWG ARR-D-MALSR33-C02.
7. SEE DWG ARR-D-MALSR33-E03 FOR FLASHER WIRING AND LAMPHOLDER INSTALLATION DETAILS.



PLAN FOUNDATION LAYOUT FOR MALSR FLASHER

1 DETAIL



CONTRACTOR SHALL SUBMIT REQUESTS FOR SUBSTITUTION OF SPECIFIC MANUFACTURER'S ITEMS SHOWN PER PARAGRAPH 1 OF THE SPECIAL SPECIFICATIONS.

SHEET 32 OF 67

DEPARTMENT OF TRANSPORTATION  
FEDERAL AVIATION ADMINISTRATION  
GREAT LAKES REGION CHICAGO, ILLINOIS

MALSR  
FOUNDATION DETAILS FOR FLASHER  
AT STATION 16+80, 18+60, AND 20+40

AURORA		AURORA MUNICIPAL AIRPORT		IL
REVIEWED BY	SUBMITTED BY	APPROVED BY		
	PROJ ENGR, TIMOTHY DYER	PLATFORM MGR, CLELAND MICHEEL		
DESIGNED BY	TAD	ISSUED BY	CHICAGO NAS	DATE 02/27/2006
DRAWN	TAD	TAD	IMPLEMENTATION CENTER	JCN
CHECKED	EGS	DRAWING NO	ARR-D-MALSR33-C09	REV

REV	DATE	DESCRIPTION	JCN	REDLINE DATE	APVD

K:\Aurora\p\020204\Draw\Sheets\FAA LS DWH, CNT mod. 5-10-05\ARR-D-MALSR33-C09.dgn  
5/10/2006 5:19:48 PM NAME  
A02037

8 7 6 5 4 3 2 1

SHEET OF