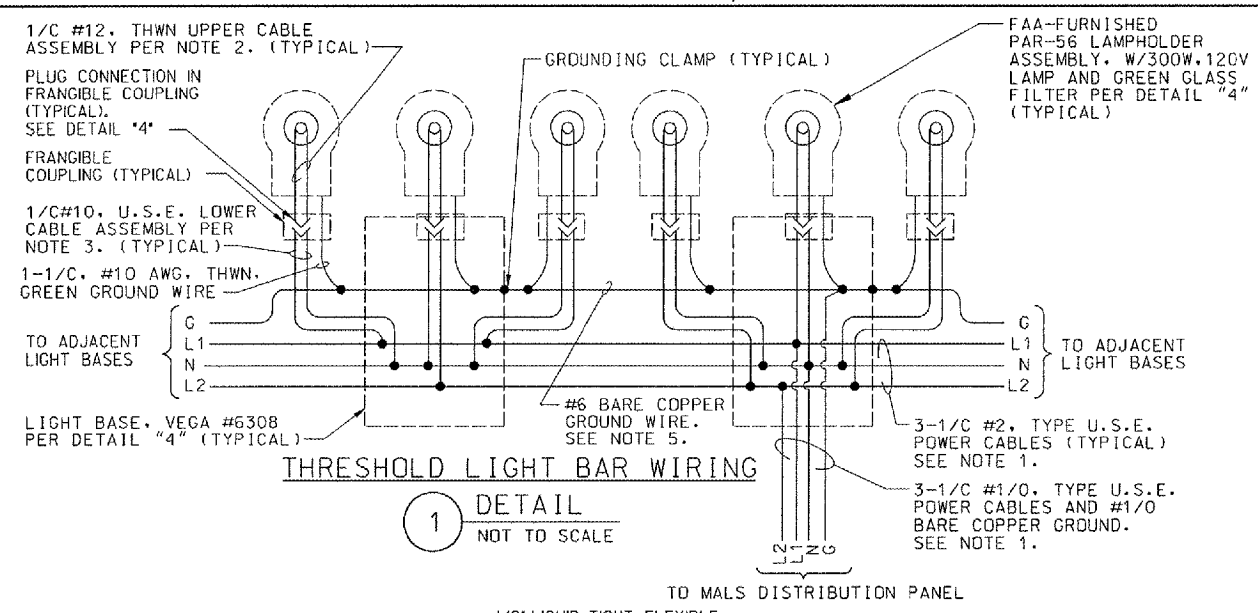
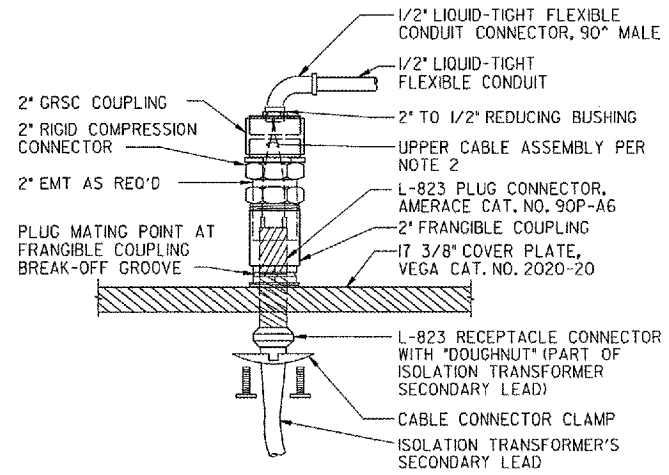


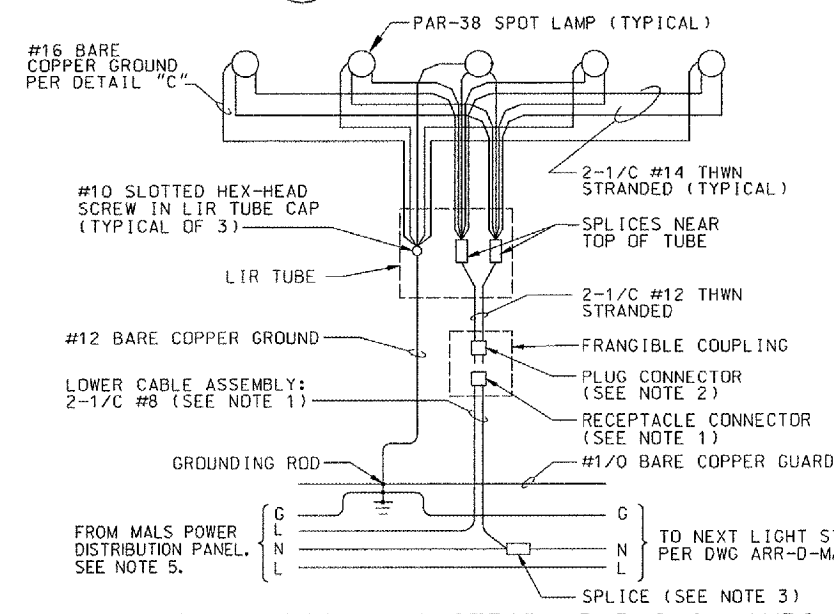
THIS DRAWING PRODUCED ON THE GREAT LAKES REGION MICROSTATION SYSTEM



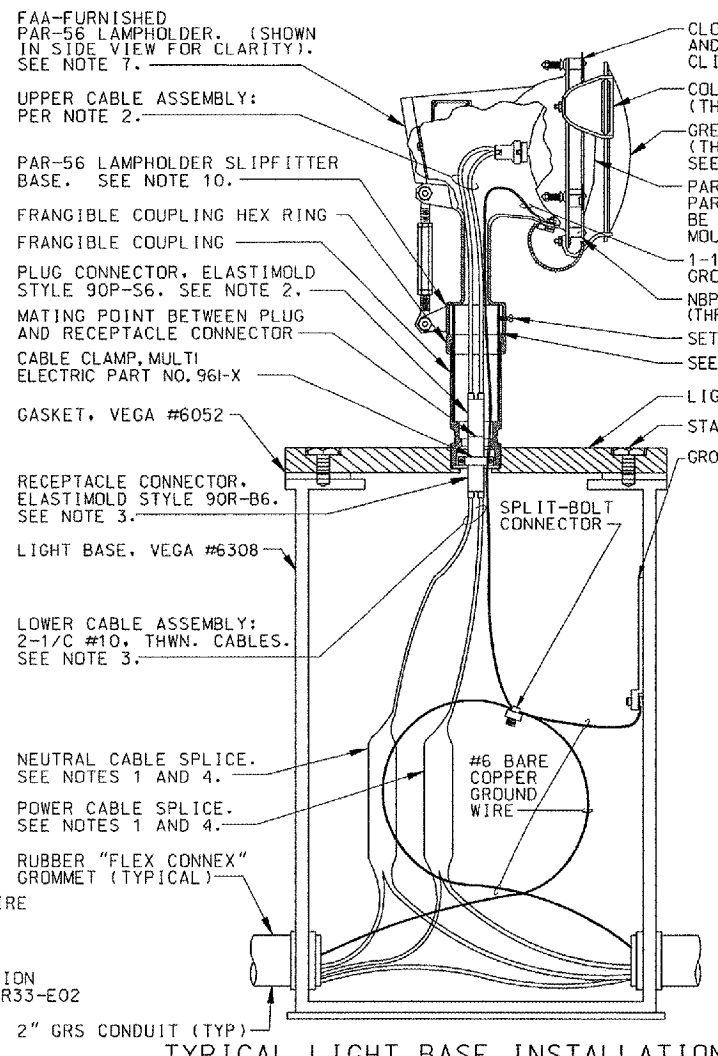
1 DETAIL
NOT TO SCALE



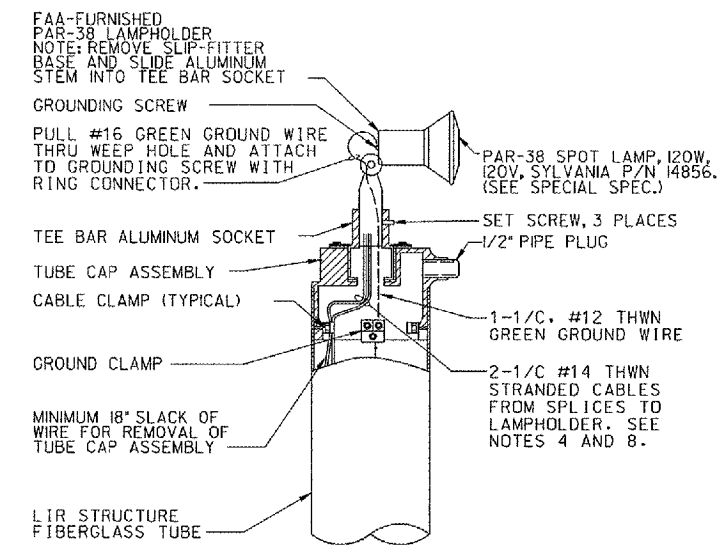
2 DETAIL
NOT TO SCALE



3 DETAIL
NOT TO SCALE



4 DETAIL
NOT TO SCALE



5 DETAIL
NOT TO SCALE

NOTES:

- EACH CURRENT-CARRYING CABLE MAKING A CONNECTION IN THE LIGHT BASE SHALL HAVE A MINIMUM 4' SLACK LOOP COILED NEATLY INSIDE THE LIGHT BASE. (SLACK LOOP NOT REQUIRED FOR CABLE PASSING THROUGH LIGHT BASE WITHOUT CONNECTION).
- THE UPPER CABLE ASSEMBLY SHALL BE 2-1/2 #14 STRANDED THWN CABLES AND ELASTIMOLD WATERTIGHT PLUG CONNECTOR, STYLE 90P-S6 FOR LIGHT BARS MOUNTED ON EMT SUPPORTS (EXCEPT THRESHOLD BAR). AT THE THRESHOLD BAR AND FOR STEADY-BURNING LAMPS MOUNTED ON LIR TOWERS, THE UPPER CABLE ASSEMBLY SHALL BE 2-1/2 #12 STRANDED THWN CABLES AND ELASTIMOLD WATERTIGHT PLUG CONNECTOR, STYLE 90P-S6.
- THE LOWER CABLE ASSEMBLY SHALL BE 2-1/2 #10 TYPE U.S.E. CABLES WITH ELASTIMOLD RECEPTACLE CONNECTOR, STYLE #90R-B6 AT LIGHT BARS MOUNTED ON EMT SUPPORTS (INCLUDING THE THRESHOLD BAR). FOR STEADY-BURNING LIGHT BARS MOUNTED ON LIR TOWERS, THE LOWER CABLE ASSEMBLY SHALL BE 2-1/2 #8 TYPE U.S.E. CABLES WITH ELASTIMOLD RECEPTACLE CONNECTOR, STYLE #90R-C4.
- CONNECTIONS OF #10 CABLES TO #2 CABLES ARE MADE WITH BURNDY CAT. NO. YPC2ABU STREET LIGHTING TAPS. CONNECTIONS OF #2 CABLES TO 1/0 CABLES, IN FEED-THROUGH SPLICES ONLY, ARE MADE WITH BURNDY CAT. NO. YC26C2 COPPER CRIMPTS. SPLICE BODIES ARE MADE WITH 3M SCOTCHCAST MULTI-MOLD SPLICING KITS, 3M NO. 85-16.
- ALL CONNECTIONS TO GROUNDING RODS SHALL BE MADE USING EXOTHERMIC WELDS PER SPECIFICATIONS.
- ALL THREADS ON BOLTS SHALL BE COATED WITH ANTI-SEIZE COMPOUND.
- A SILICONE RUBBER INSULATOR DISK (GFM) SHALL BE SECURELY INSTALLED BETWEEN THE LAMPHOLDER AND THE PAR-56 LAMP (THRESHOLD BAR ONLY).
- EACH GREEN GLASS FILTER, WHICH ARE FAA-FURNISHED, (THRESHOLD BAR ONLY) IS SECURED WITH THREE STAINLESS STEEL FILTER CLIPS. THE CONTRACTOR SHALL BEND THE FILTER CLIPS SUCH THAT THEY HOLD THE FILTER SECURELY WHEN THEY ARE BOLTED.
- THE CONTRACTOR SHALL FURNISH AND INSTALL AN NBP PAR-56 LAMPHOLDER RING ON EACH PAR-56 LAMPHOLDER (THRESHOLD BAR ONLY). THIS RING FITS OVER THE LAMP-RETAINING CLIPS, AND HOLDS THE LAMP POSITIVELY IN PLACE. THE RING COMES WITH AN ATTACHED CHAIN HAVING A SS BOLT AT THE FREE END. REPLACE THE LAMPHOLDER'S EXISTING STAINLESS STEEL GROUNDING BOLT WITH THE CHAIN'S BOLT.
- WHEN INSTALLING PAR-38 LAMPHOLDER, FEED PIGTAIL ENDS OF CABLE INTO LAMPHOLDER AND CONNECT TO TERMINALS IN LAMPHOLDER SOCKET. USE CARE TO PREVENT THE SOCKET RETENTION BOLTS FROM DAMAGING CABLE INSULATION.
- SEE DWG ARR-D-MALSR33-C01 DRAWING FOR LAMP CENTERLINE ELEVATION TO DETERMINE LENGTH OF 2" EMT REQUIRED. AT THE THRESHOLD BAR, THE CONDUIT SHALL BE SIZED SO THAT THE BOTTOM OF THE PAR-56 LAMPHOLDER BASE IS IN CONTACT WITH THE TOP OF THE FRANGIBLE COUPLING.

CONTRACTOR SHALL SUBMIT REQUESTS FOR SUBSTITUTION OF SPECIFIC MANUFACTURER'S ITEMS SHOWN PER PARAGRAPH 1 OF THE SPECIAL SPECIFICATIONS.

SHEET 38 OF 67

DEPARTMENT OF TRANSPORTATION
FEDERAL AVIATION ADMINISTRATION
GREAT LAKES REGION CHICAGO, ILLINOIS

MALSR
WIRING DIAGRAMS FOR
STEADY-BURNING LIGHT BARS
RUNWAY 33

AURORA	AURORA MUNICIPAL AIRPORT	IL	
REVIEWED BY	SUBMITTED BY	APPROVED BY	
DESIGNED BY	TAD	PLATFORM MGR,	CLELAND MICHEEL
DRAWN	TAD	ISSUED BY	CHICAGO NAS IMPLEMENTATION CENTER
CHECKED	EDS	DATE	02/21/2006
		DRAWING NO	ARR-D-MALSR33-E01

REV	DATE	DESCRIPTION	CON	REDLINE DATE	APPROV

K:\Aurora\p0428564.dwg Sheets\FAA LS DRNs, CHT mod. 5-10-05\ARR-D-MALSR33-E01.dwg
6/10/2006 5:21:17 PM NAME