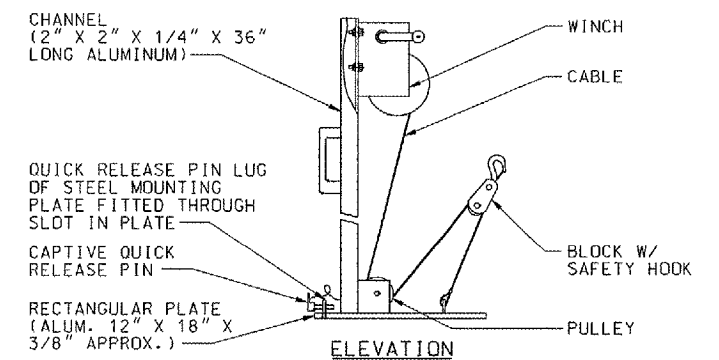
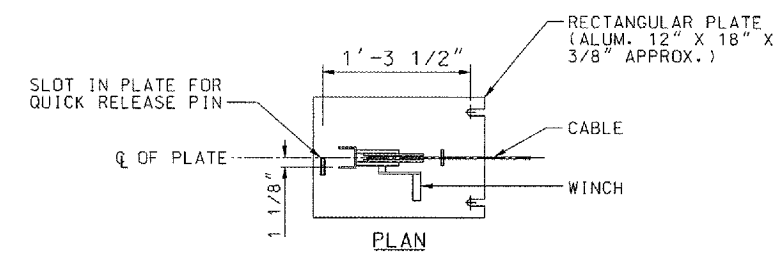
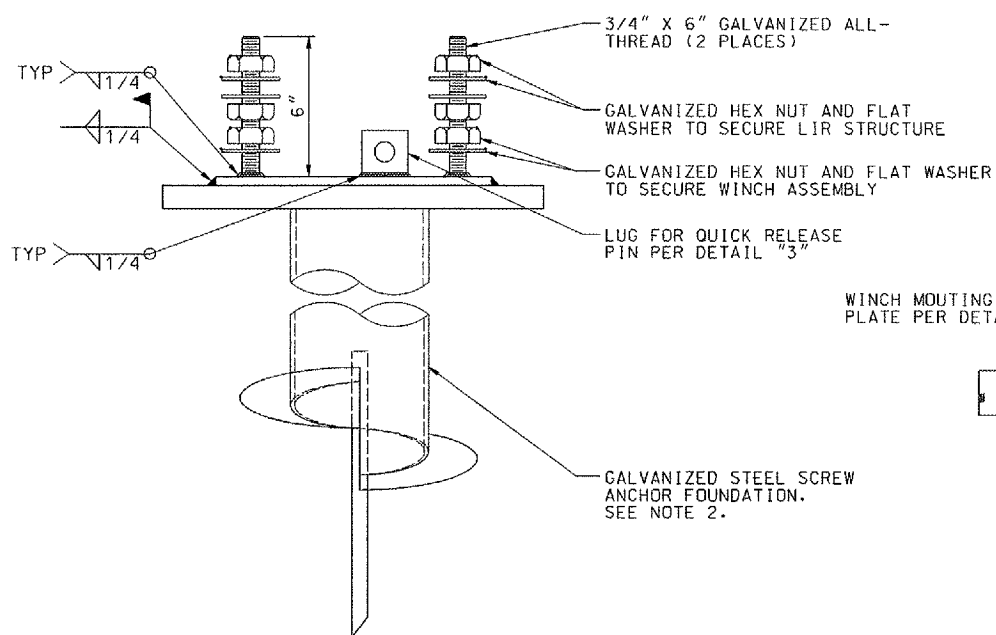
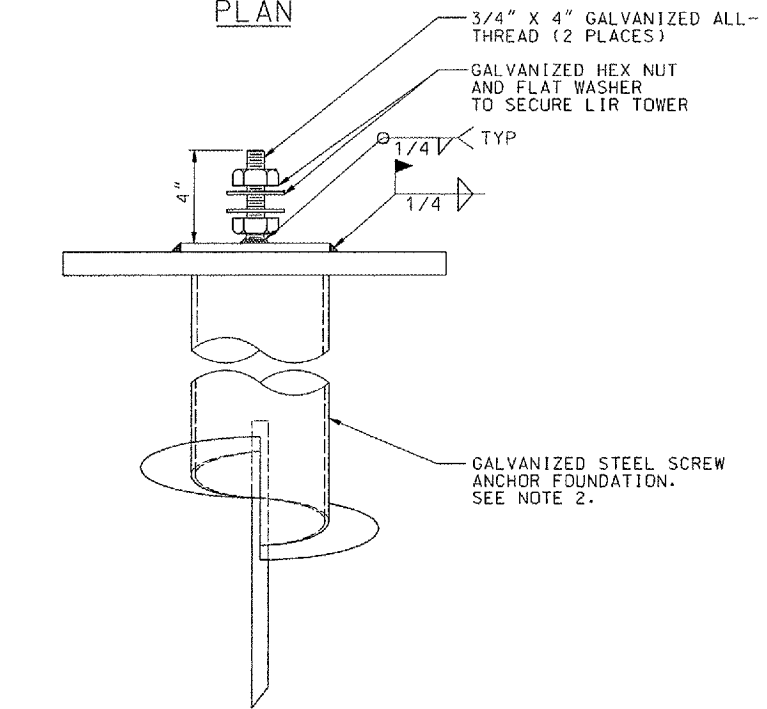
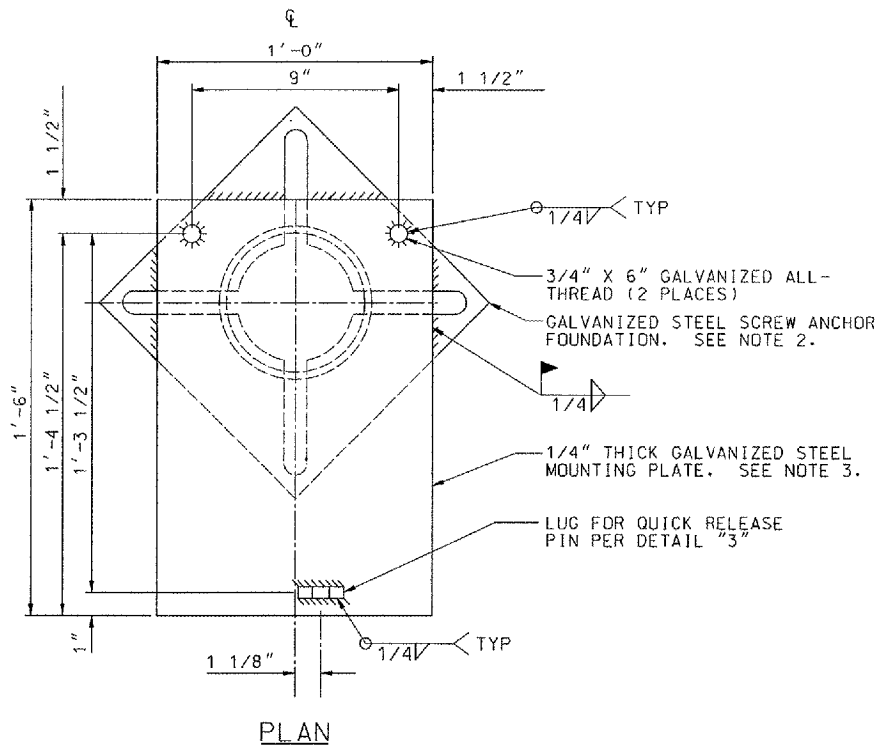
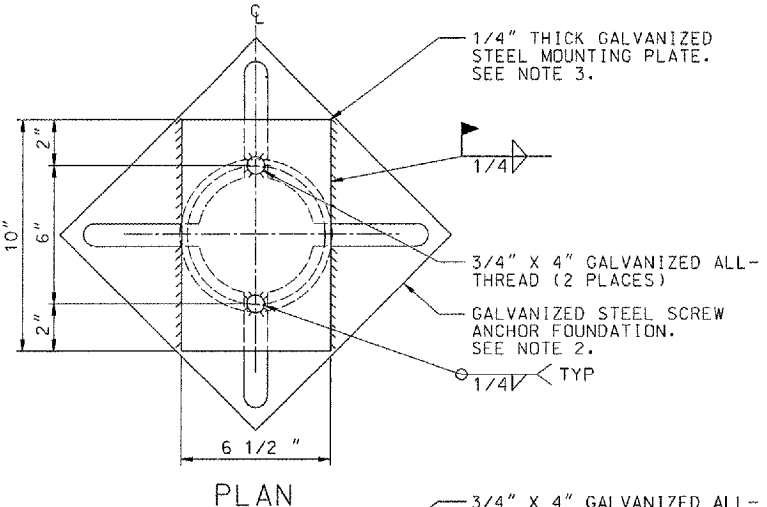
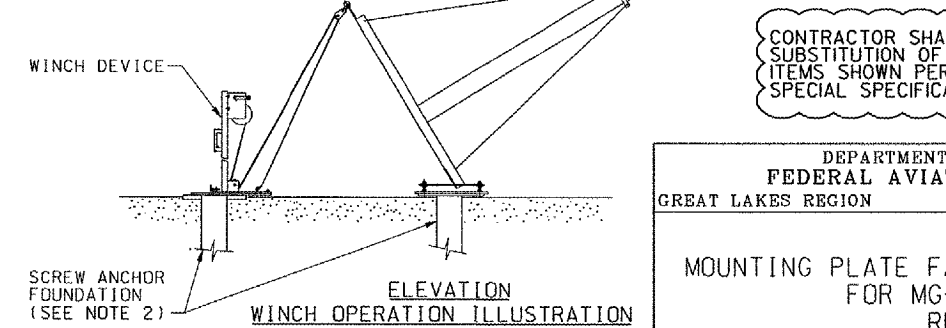
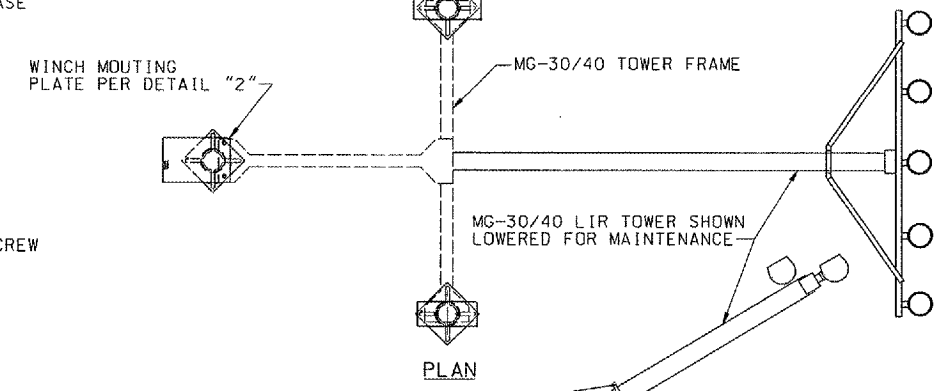


THIS DRAWING PRODUCED ON THE GREAT LAKES REGION MICROSTATION SYSTEM

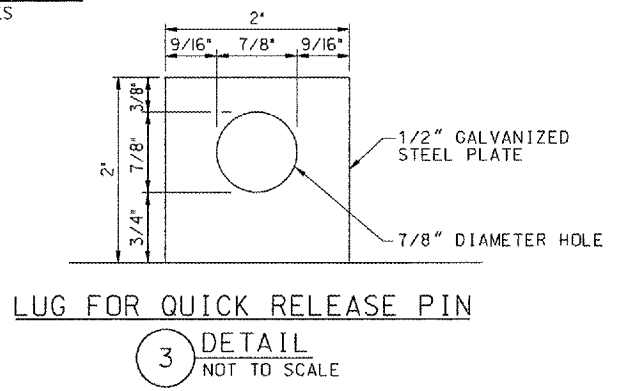
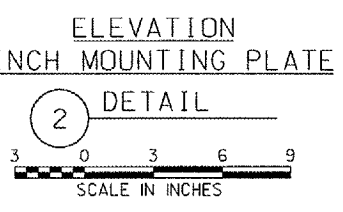
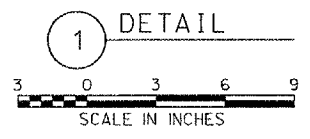


**4** DETAIL NOT TO SCALE

WINCH DEVICE ATTACHED TO MOUNTING STAND ILLUSTRATION SEE NOTE 1



**5** DETAIL NOT TO SCALE



**NOTES:**

- WINCH IS PROVIDED BY THE FAA WITH MALSR EQUIPMENT; DETAILS ARE FOR REFERENCE ONLY. WINCH SHALL BE DELIVERED TO RESIDENT ENGINEER AFTER TOWER INSTALLATION.
- SCREW ANCHOR FOUNDATIONS SHALL BE STEEL STREETLIGHT FOUNDATIONS, A.B. CHANCE CAT. NO. CT112-0262. SEE THE SECTION 13D OF THE SPECIFICATION FAA-GL-918C FOR INSTRUCTIONS REGARDING INSTALLATION OF THE SCREW ANCHORS.
- EXACT LOCATION OF SCREW ANCHOR FOUNDATION MAY VARY DUE TO SITE CONDITIONS. MOUNTING PLATES MAY BE SHIFTED TO ACCOMMODATE INSTALLATION OF LIR TOWER WITH LIR TUBE CENTERED AT STATION AND OFFSET LOCATION SHOWN ON SITE DRAWINGS. MOUNTING PLATES SHALL NOT BE SHIFTED MORE THAN 3" IN ANY DIRECTION.

CONTRACTOR SHALL SUBMIT REQUESTS FOR SUBSTITUTION OF SPECIFIC MANUFACTURER'S ITEMS SHOWN PER PARAGRAPH 1 OF THE SPECIAL SPECIFICATIONS.

SHEET 45 OF 67

DEPARTMENT OF TRANSPORTATION  
FEDERAL AVIATION ADMINISTRATION  
GREAT LAKES REGION CHICAGO, ILLINOIS

MALSR  
MOUNTING PLATE FABRICATION DETAILS FOR  
FOR MG-30 LIR TOWER  
RUNWAY 33

REVIEWED BY	SUBMITTED BY	APPROVED BY
PROJ ENGR, TIMOTHY DYER	PLATFORM MGR, CLELAND MICHEEL	
DESIGNED	ISSUED BY	DATE
DRAWN	CHICAGO NAS IMPLEMENTATION CENTER	02/18/2006
CHECKED		

REV	DATE	DESCRIPTION	JCN	REDLINE DATE	APPROVED

K:\Aurora\0428504\Draw\Sheets\FAA LS DGN's\_CMT mod. 5-10-06\ARR-D-MALS33-S04.dgn  
5/10/2006 5:24:07 PM RMM/ES  
RRT/SP