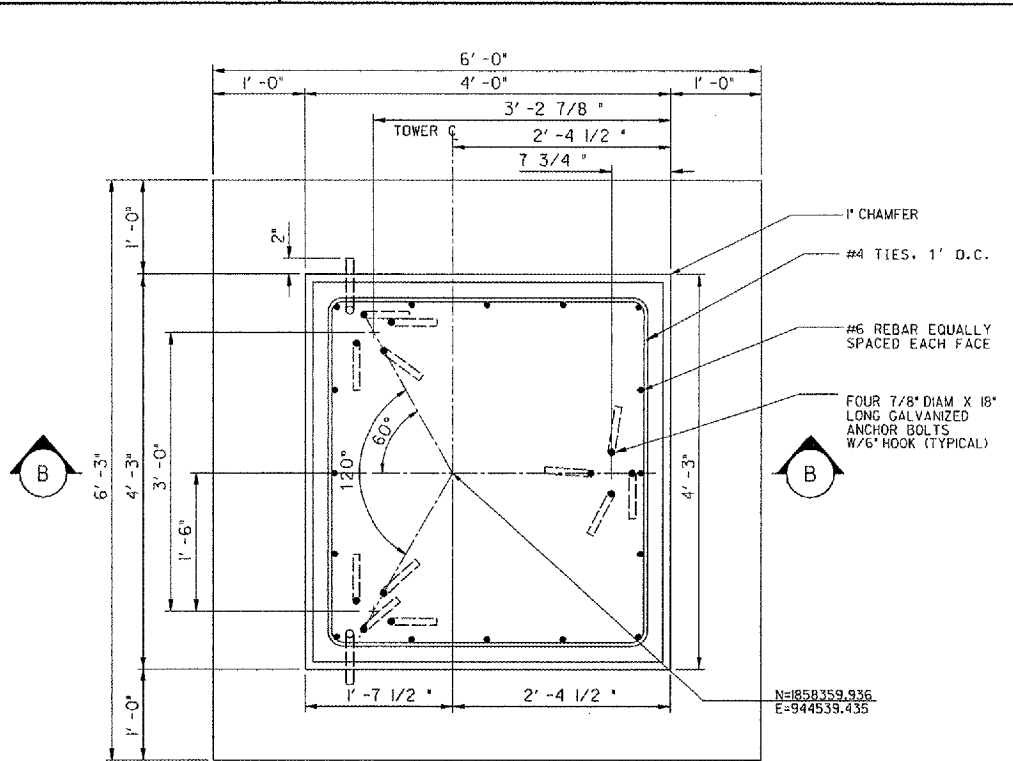
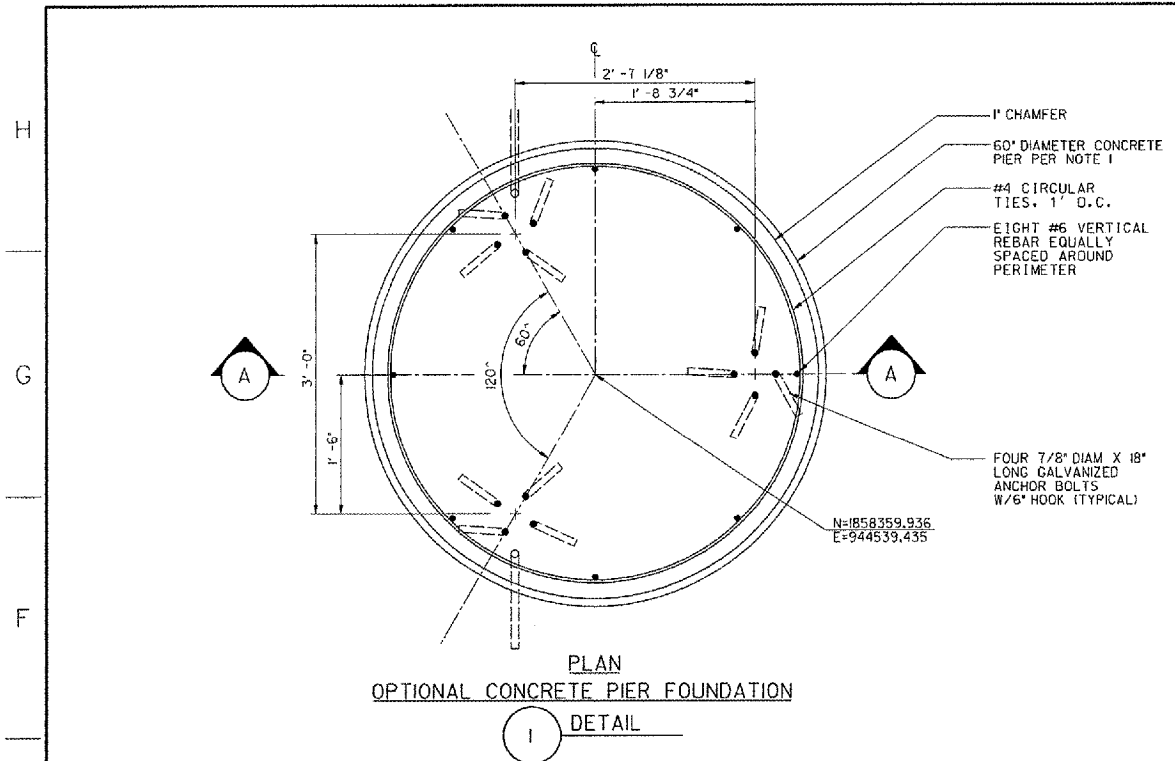
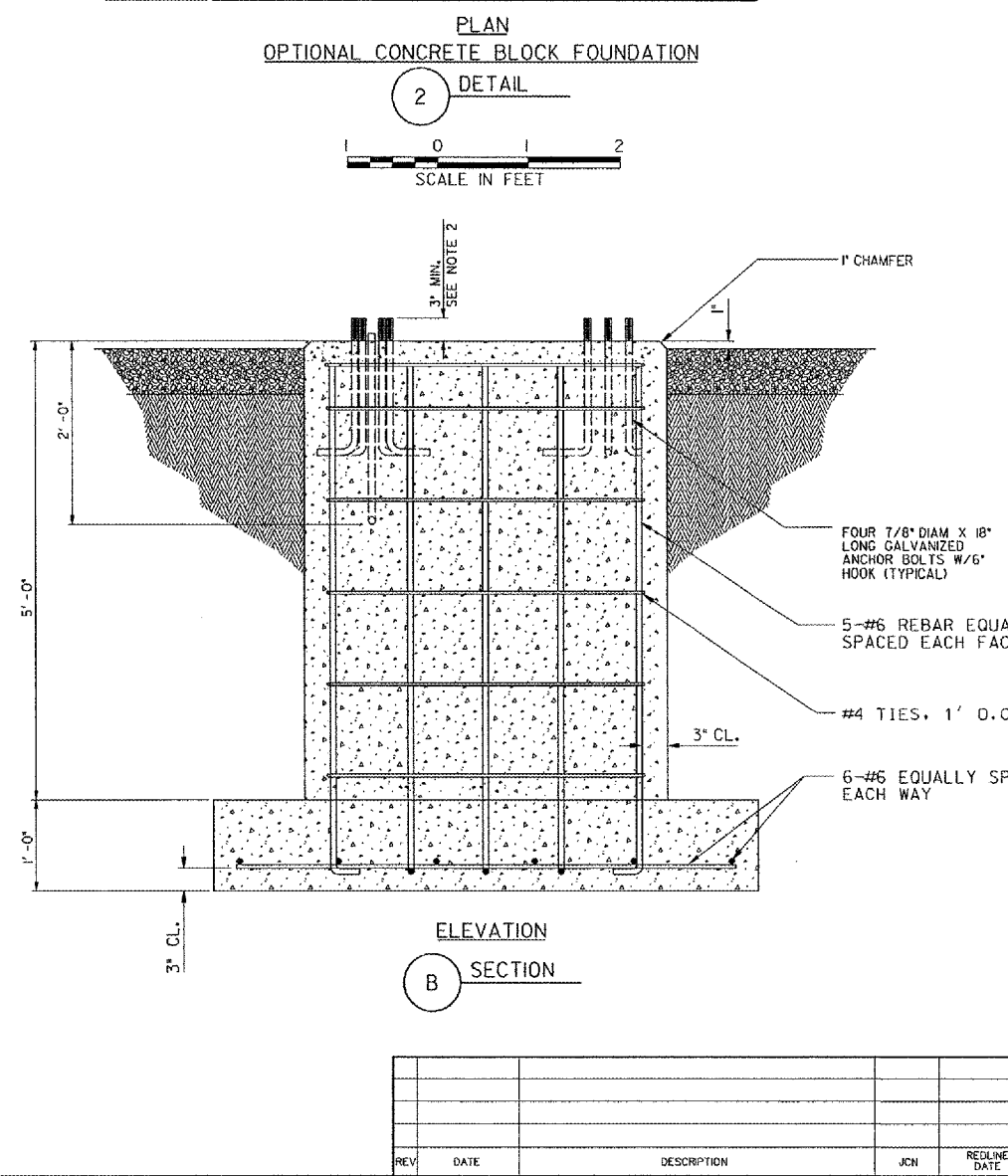
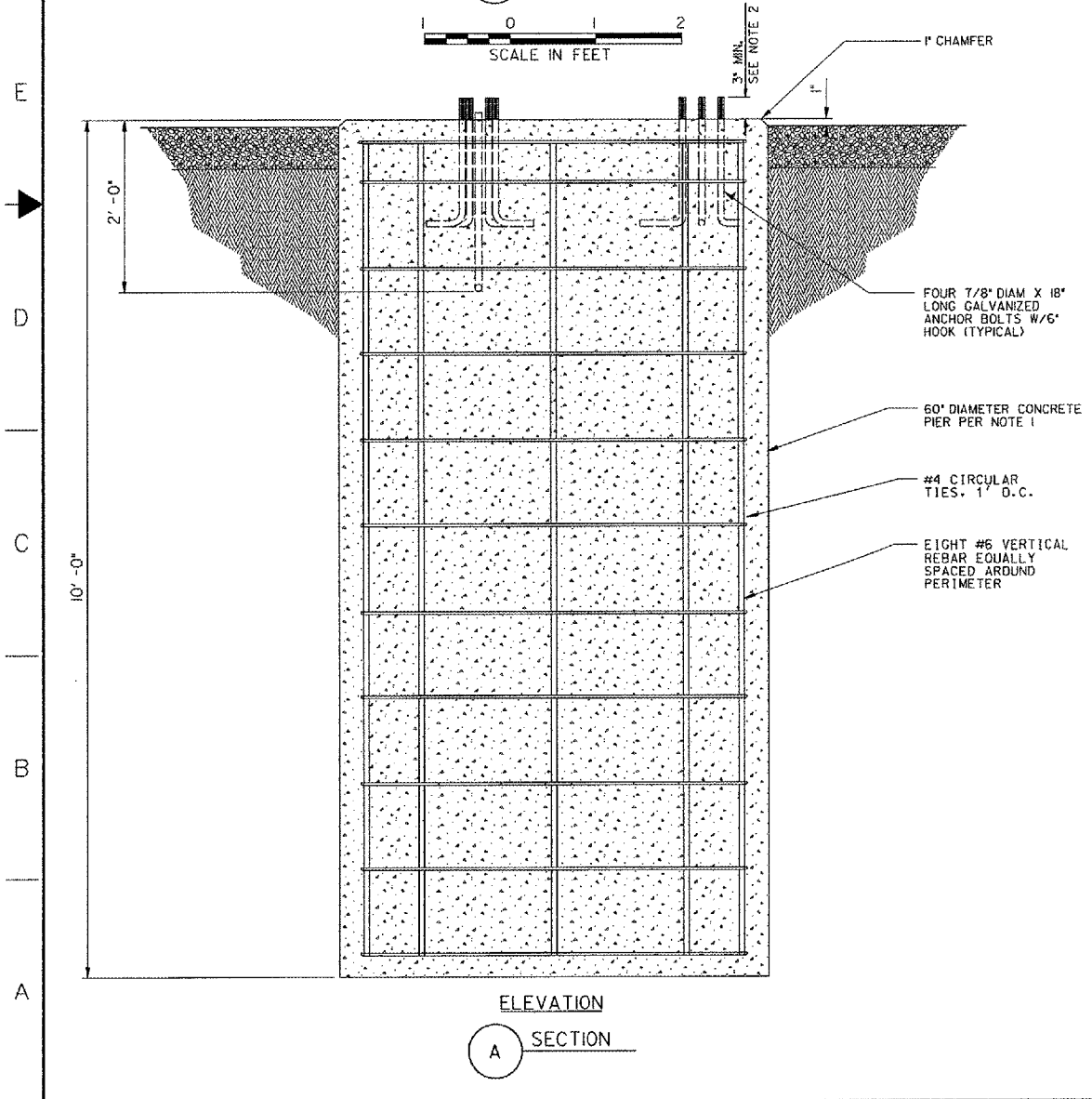
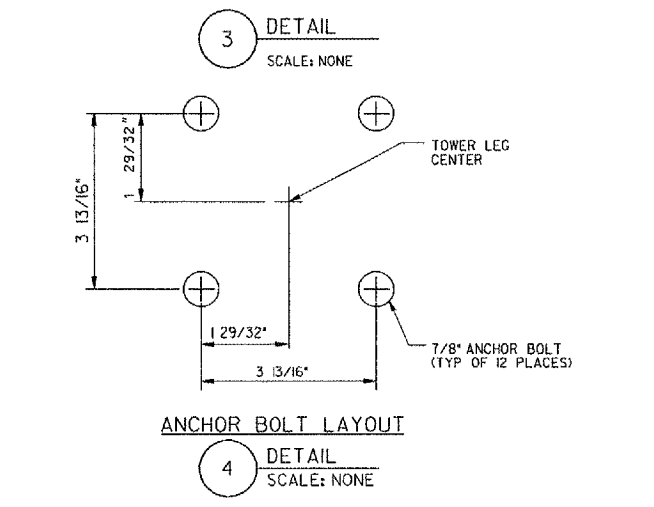
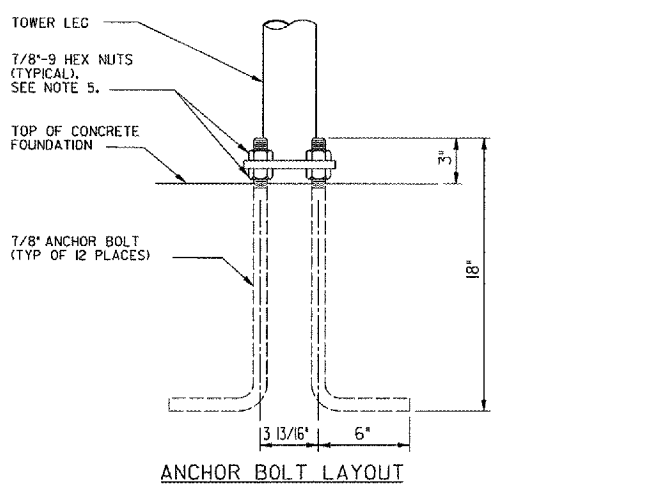


THIS DRAWING PRODUCED ON THE GREAT LAKES REGION MICROSTATION SYSTEM

8 7 6 5 4 3 2 1



- NOTES:**
1. SEE DWG ARR-D-GS33-C01 FOR FOUNDATION LOCATION AND TOP ELEVATION.
  2. HORIZONTAL TOLERANCES FOR GLIDE SLOPE ANTENNA MAST ANCHOR BOLTS ARE +/- 1/16" OF DIMENSIONS SHOWN. VERIFY ANCHOR BOLT TEMPLATE WITH REFERENCE TO TOWER BASE PRIOR TO PLACING CONCRETE.
  3. REFER TO PROJECT SPECIAL REVISIONS FOR EXCAVATION DETAILS.
  4. REFER TO PROJECT SPECIAL REVISIONS FOR CONCRETE DETAILS.
  5. TOWER IS GROUTED UNDER ALL ANCHOR PLATES AFTER FINAL LEVELING ADJUSTMENT.



SHEET 47 OF 67

DEPARTMENT OF TRANSPORTATION  
FEDERAL AVIATION ADMINISTRATION  
GREAT LAKES REGION CHICAGO, ILLINOIS

GLIDE SLOPE  
ANTENNA TOWER FOUNDATION DETAILS

AURORA		AURORA MUNICIPAL AIRPORT		IL
REVIEWED BY	SUBMITTED BY	APPROVED BY		
DESIGNED	TAD	PLATFORM MGR,	CLELAND MICHEEL	
DRAWN	TAD	DATE	02/27/2006	JCH
CHECKED	EGS	ISSUED BY	CHICAGO NAS IMPLEMENTATION CENTER	
		DRAWING NO	ARR-D-GS33-C02	REV

K:\Aurora\4646555A\GMA\Sheet\FAA LS DOWNS, CUT mod. 5-10-06\ARR-D-GS33-C01.dwg  
5/10/2006 5:05:17 PM BMMES  
26/29

8 7 6 5 4 3 2 1

SHEET OF