

AU062
 PATH: K:\0428504\DRAW\SHEETS
 FILE: SITE.DWG
 UPDATE BY: .
 SURVEY BOOK #
 XREF DWG:
 XREF DWG:
 DATE: .

NOTES

1. CONTRACTOR SHALL INSTALL LOCALIZER GROUND CHECKPOINTS PER FAA REQUIREMENTS. COORDINATE INSTALLATION W/ FAA AND RESIDENT ENGINEER.
2. CONTRACTOR INSTALL 1-1/2" GRS CONDUIT RISER 10'-0" ABOVE GRADE ON UTILITY POLE AND PROVIDE SUFFICIENT LENGTH OF CABLE TO BE TERMINATED BY UTILITY COMPANY.
3. NEW ELECTRIC SERVICE SHALL BE 80A, 120/240V, 1-PHASE. COORDINATE ALL WORK WITH UTILITY COMPANY.
4. ALL COST OF NEW ELECTRIC SERVICE, PUSHED AND TRENCHED CONDUIT, CABLE, DISCONNECT, UNISTRUT MOUNTING, GATE OPERATOR, KEYPAD AND MISCELLANEOUS ITEM SHOWN ARE INCIDENTAL TO NEW ELECTRIC GATE.

REVISIONS

NUMBER	BY	DATE

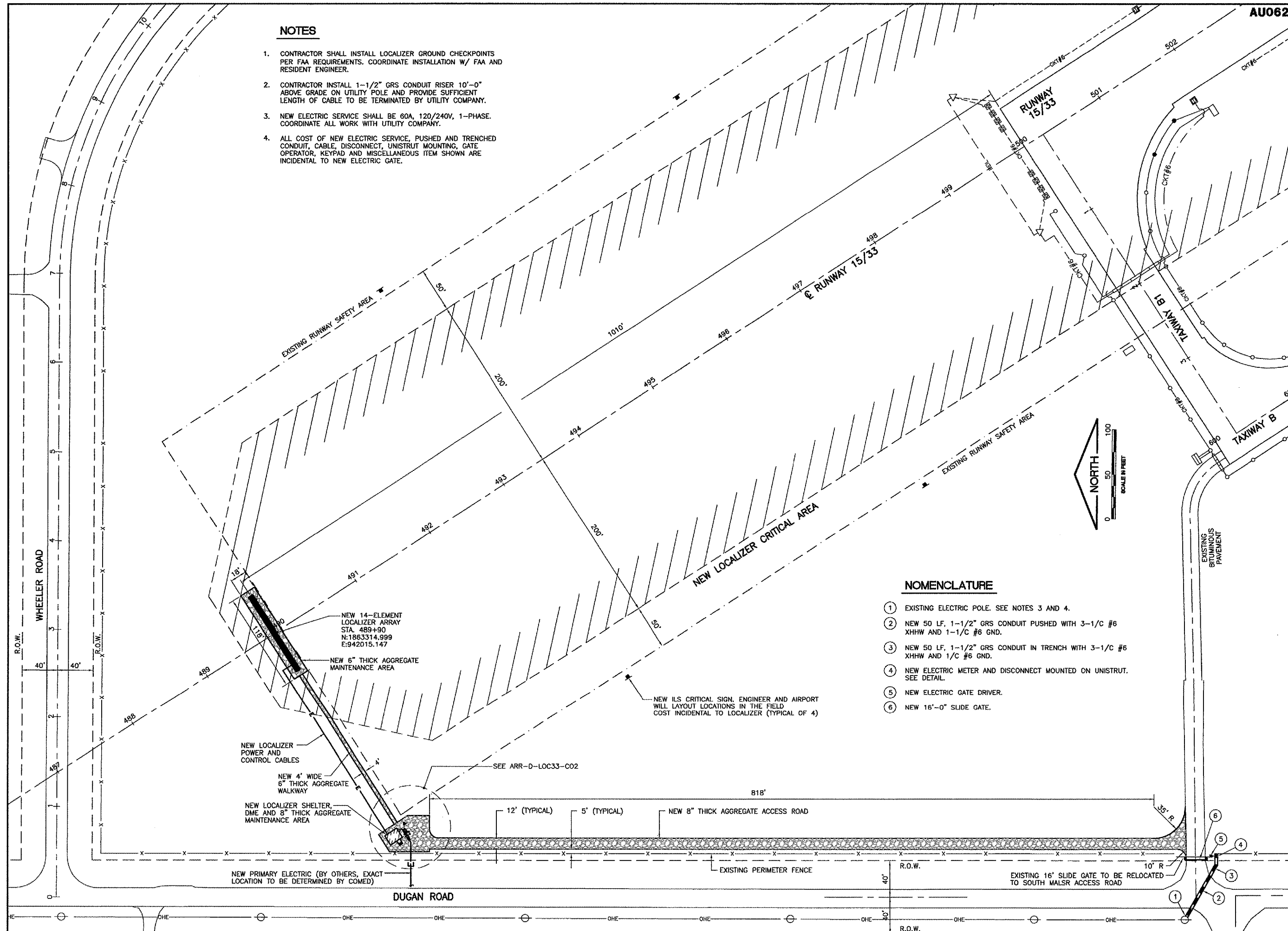
0 1 2
 THIS BAR IS EQUAL TO 2'
 AT FULL SCALE (34X22).

**AURORA MUNICIPAL AIRPORT
 AURORA, ILLINOIS
 CONSTRUCT RUNWAY 33 ILS,
 RELOCATE RUNWAY 9 LOCALIZER
 RUNWAY 33 LOCALIZER/DME
 SITE PLAN
 ARR-D-LOC33-C01**

© copyright GMT, Inc.

GMT
 CRAWFORD, MURPHY & TILLY, INC.
 CONSULTING ENGINEERS
 License No. 184-000633

DESIGN BY:	CAL
DRAWN BY:	JRO
CHECKED BY:	CAL
APPROVED BY:	
DATE:	05/12/06
JOB No:	04285-04
ILLINOIS PROJECT:	ARR-3468
A.I.P. PROJECT:	3-17-0003-B31
FINAL SUBMITTAL	



NOMENCLATURE

- 1 EXISTING ELECTRIC POLE. SEE NOTES 3 AND 4.
- 2 NEW 50 LF, 1-1/2" GRS CONDUIT PUSHED WITH 3-1/C #6 XHHW AND 1-1/C #6 GND.
- 3 NEW 50 LF, 1-1/2" GRS CONDUIT IN TRENCH WITH 3-1/C #6 XHHW AND 1/C #6 GND.
- 4 NEW ELECTRIC METER AND DISCONNECT MOUNTED ON UNISTRUT. SEE DETAIL.
- 5 NEW ELECTRIC GATE DRIVER.
- 6 NEW 16'-0" SLIDE GATE.