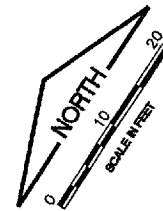


AU062

PATH: K:\0428504\DRAW\SHEETS  
FILE: SITE-ENLG.DWG  
UPDATE BY: .  
SURVEY BOOK #  
XREF DWG:  
XREF DWG:  
DATE: .



**NUMBERED LEGEND**

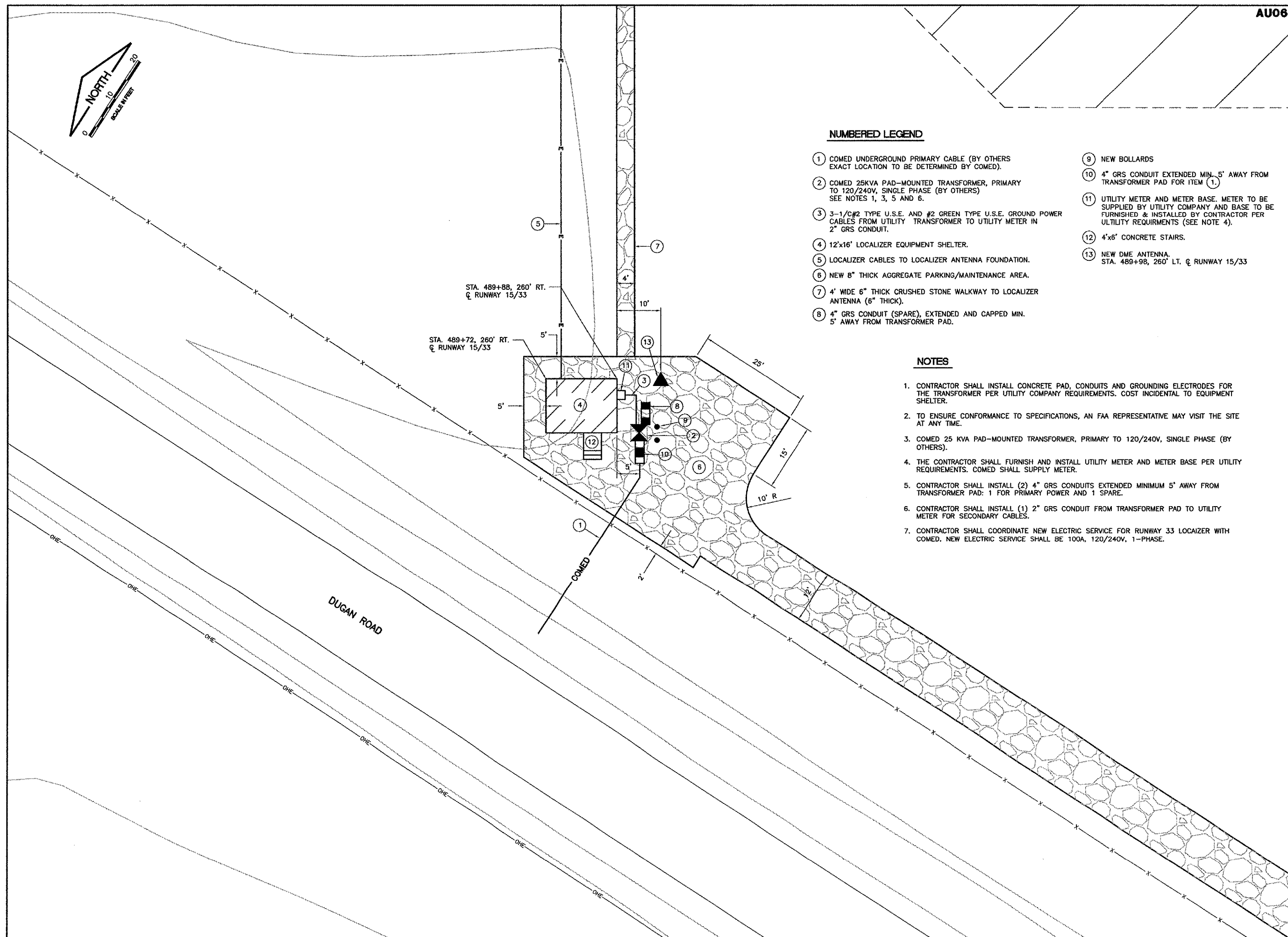
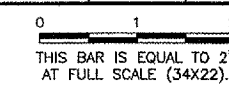
- ① COMED UNDERGROUND PRIMARY CABLE (BY OTHERS EXACT LOCATION TO BE DETERMINED BY COMED).
- ② COMED 25KVA PAD-MOUNTED TRANSFORMER, PRIMARY TO 120/240V, SINGLE PHASE (BY OTHERS) SEE NOTES 1, 3, 5 AND 6.
- ③ 3-1/C#2 TYPE U.S.E. AND #2 GREEN TYPE U.S.E. GROUND POWER CABLES FROM UTILITY TRANSFORMER TO UTILITY METER IN 2" GRS CONDUIT.
- ④ 12'x16' LOCALIZER EQUIPMENT SHELTER.
- ⑤ LOCALIZER CABLES TO LOCALIZER ANTENNA FOUNDATION.
- ⑥ NEW 8" THICK AGGREGATE PARKING/MAINTENANCE AREA.
- ⑦ 4' WIDE 6" THICK CRUSHED STONE WALKWAY TO LOCALIZER ANTENNA (6" THICK).
- ⑧ 4" GRS CONDUIT (SPARE), EXTENDED AND CAPPED MIN. 5' AWAY FROM TRANSFORMER PAD.
- ⑨ NEW BOLLARDS
- ⑩ 4" GRS CONDUIT EXTENDED MIN. 5' AWAY FROM TRANSFORMER PAD FOR ITEM ①.
- ⑪ UTILITY METER AND METER BASE. METER TO BE SUPPLIED BY UTILITY COMPANY AND BASE TO BE FURNISHED & INSTALLED BY CONTRACTOR PER UTILITY REQUIREMENTS (SEE NOTE 4).
- ⑫ 4'x6' CONCRETE STAIRS.
- ⑬ NEW DME ANTENNA. STA. 489+98, 260' LT. Q. RUNWAY 15/33

**NOTES**

1. CONTRACTOR SHALL INSTALL CONCRETE PAD, CONDUITS AND GROUNDING ELECTRODES FOR THE TRANSFORMER PER UTILITY COMPANY REQUIREMENTS. COST INCIDENTAL TO EQUIPMENT SHELTER.
2. TO ENSURE CONFORMANCE TO SPECIFICATIONS, AN FAA REPRESENTATIVE MAY VISIT THE SITE AT ANY TIME.
3. COMED 25 KVA PAD-MOUNTED TRANSFORMER, PRIMARY TO 120/240V, SINGLE PHASE (BY OTHERS).
4. THE CONTRACTOR SHALL FURNISH AND INSTALL UTILITY METER AND METER BASE PER UTILITY REQUIREMENTS. COMED SHALL SUPPLY METER.
5. CONTRACTOR SHALL INSTALL (2) 4" GRS CONDUITS EXTENDED MINIMUM 5' AWAY FROM TRANSFORMER PAD: 1 FOR PRIMARY POWER AND 1 SPARE.
6. CONTRACTOR SHALL INSTALL (1) 2" GRS CONDUIT FROM TRANSFORMER PAD TO UTILITY METER FOR SECONDARY CABLES.
7. CONTRACTOR SHALL COORDINATE NEW ELECTRIC SERVICE FOR RUNWAY 33 LOCALIZER WITH COMED. NEW ELECTRIC SERVICE SHALL BE 100A, 120/240V, 1-PHASE.

**REVISIONS**

NUMBER	BY	DATE



**AURORA MUNICIPAL AIRPORT  
AURORA, ILLINOIS  
CONSTRUCT RUNWAY 33 ILS;  
RELOCATE RUNWAY 9 LOCALIZER  
RUNWAY 33 LOCALIZER/DME  
SHELTER SITE PLAN  
ARR-D-LOC33-C02**

© Copyright CMT, Inc.

**CMT**  
CRAWFORD, MURPHY & TILLY, INC.  
CONSULTING ENGINEERS  
License No. 184-000613

DESIGN BY:	CAL
DRAWN BY:	JRO
CHECKED BY:	CAL
APPROVED BY:	
DATE:	05/12/06
JOB No:	04285-04
ILLINOIS PROJECT:	ARR-3468
A.I.P. PROJECT:	3-17-0003-B31
<b>FINAL SUBMITTAL</b>	