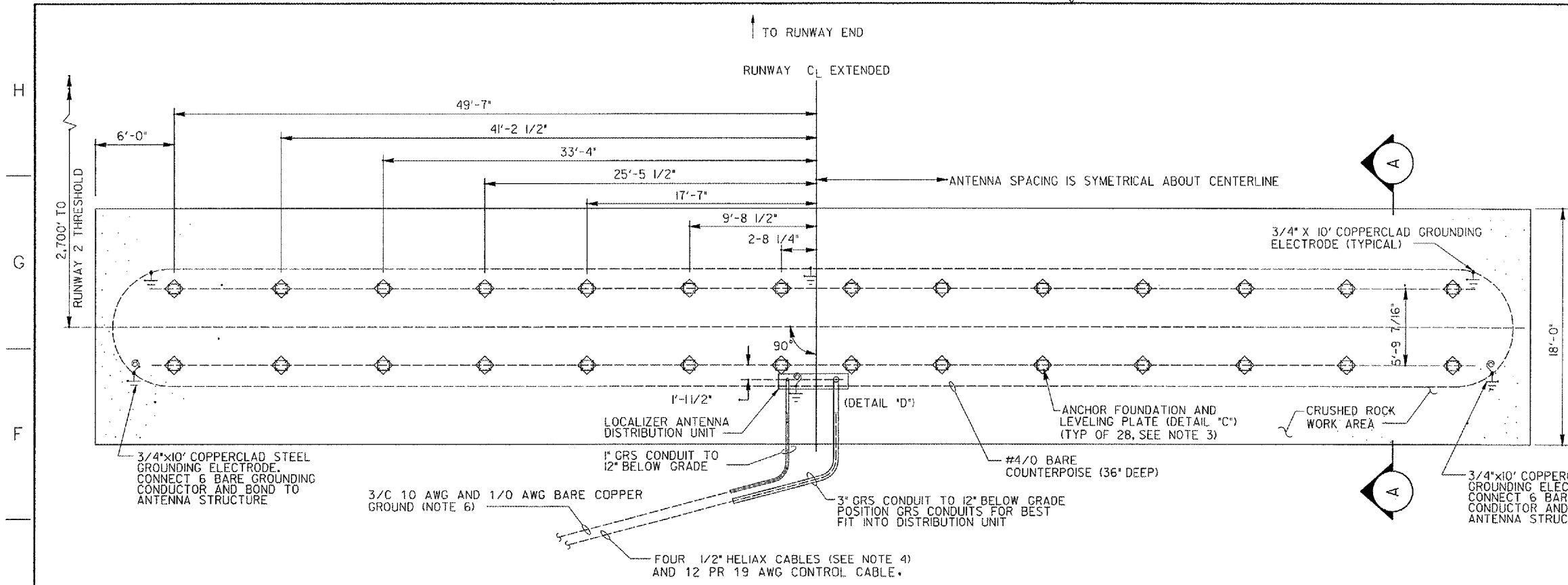
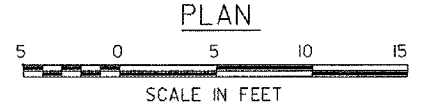


**NOTES:**

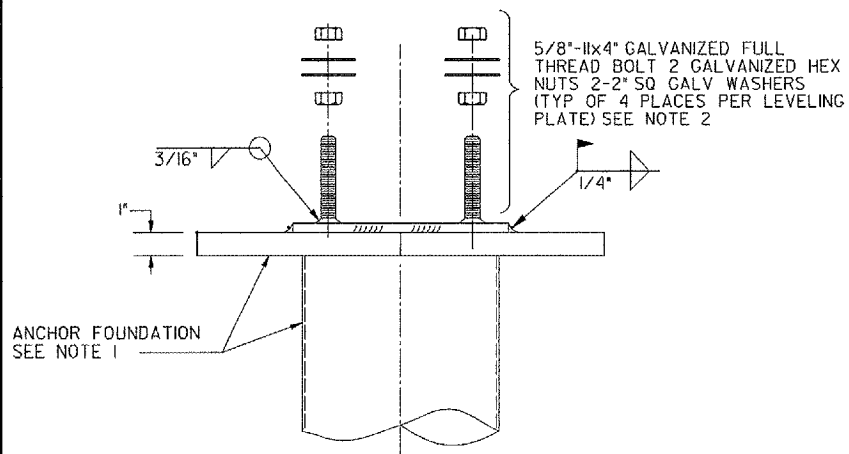
1. SCREW ANCHOR FOUNDATIONS SHALL BE LOCATED WITHIN ~2" OF DIMENSIONS SHOWN. LEVELING PLATE SHALL BE WELDED TO EACH FOUNDATION TOP AFTER PLATE CENTER IS LOCATED WITHIN ~1/8" OF DIMENSIONS SHOWN.
2. ALL SCREW ANCHOR FOUNDATION TOPS SHALL BE INSTALLED TO THE SAME ELEVATION WITHIN 1/8" MAXIMUM TOTAL VARIATION.
3. LONGITUDINAL CENTERLINE OF ANTENNA ARRAY SHALL BE PERPENDICULAR TO RUNWAY CENTER-LINE WITHIN ~0.05 DEGREES. CENTER OF ANTENNA ARRAY SHALL BE ON RUNWAY CENTERLINE EXTENDED WITHIN ~3".
4. 15' COILS OF ALL SIGNAL AND CONTROL CABLES SHALL BE LEFT AT THE DISTRIBUTION UNIT FOR TERMINATION BY FAA INSTALLATION PERSONNEL.
5. ALL BURIED CABLE CONNECTIONS SHALL BE MADE USING EXOTHERMIC WELDS PER SPECIFICATION FAA-GL-918C.
6. TERMINATE POWER CONDUCTORS INSIDE DISTRIBUTION UNIT FOR OBSTRUCTION LIGHTING AND CONVENIENCE OUTLET.



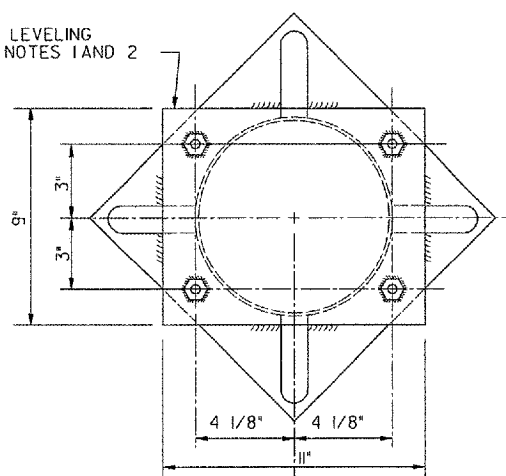
**LOCALIZER ANCHOR FOUNDATION LAYOUT PLAN**



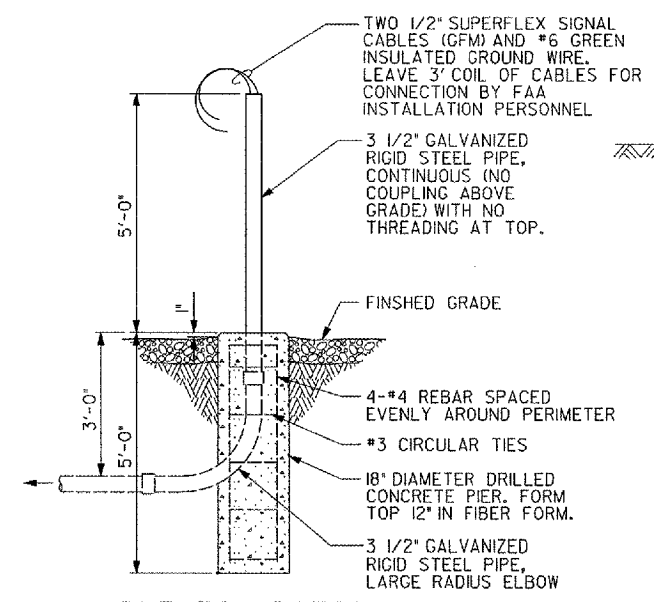
3" GRS CONDUIT TO 12" BELOW GRADE POSITION GRS CONDUITS FOR BEST FIT INTO DISTRIBUTION UNIT



**1** DETAIL - LEVELING BOLT  
SCALE: NONE

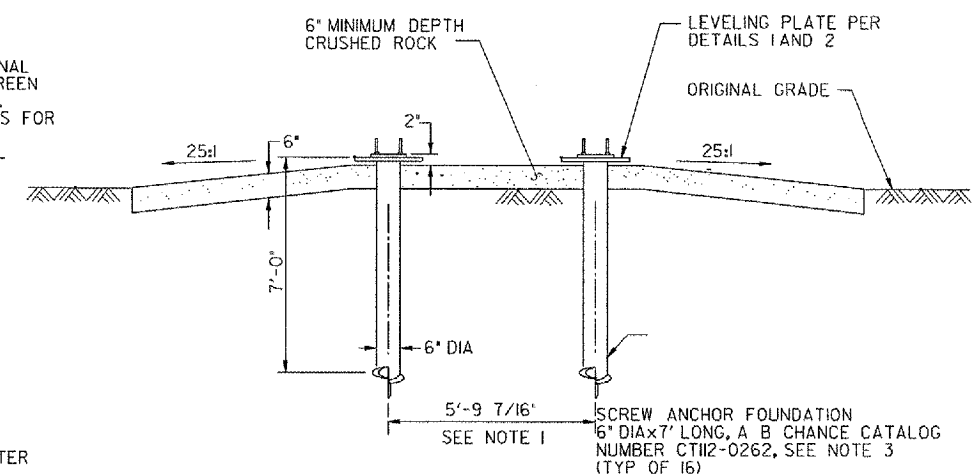


**2** DETAIL  
SCALE: NONE (TYP OF 16)



**3** DME FOUNDATION DETAIL  
NOT TO SCALE

NOTE:  
1. FAA INSTALLATION PERSONNEL WILL INSTALL DME ANTENNA AND MAKE CABLE CONNECTIONS.



**A** SECTION  
SCALE: NONE

CONTRACTOR SHALL SUBMIT REQUESTS FOR SUBSTITUTION OF SPECIFIC MANUFACTURER'S ITEMS SHOWN PER PARAGRAPH 1 OF THE SPECIAL SPECIFICATIONS.

DEPARTMENT OF TRANSPORTATION  
FEDERAL AVIATION ADMINISTRATION  
GREAT LAKES REGION CHICAGO, ILLINOIS

LOCALIZER  
MK-20A ANTENNA ARRAY FOUNDATION DETAILS  
RUNWAY 33

AURORA		AURORA MUNICIPAL AIRPORT		IL
REVIEWED BY	SUBMITTED BY	APPROVED BY		
DESIGNED	TAD	ISSUED BY	DATE	JCN
DRAWN	TAD	CHICAGO NAS IMPLEMENTATION CENTER	02/27/2006	
CHECKED	TAD			
REV	DATE	DESCRIPTION	JCN	REDLINE DATE

K:\Aurora\04285004\Draw\Sheets\F14 LS DGRs. DIT mod. 5-10-06\ARR-D-LOC33-C03.dgn  
 5/10/2006 5:15:35 PM NAME