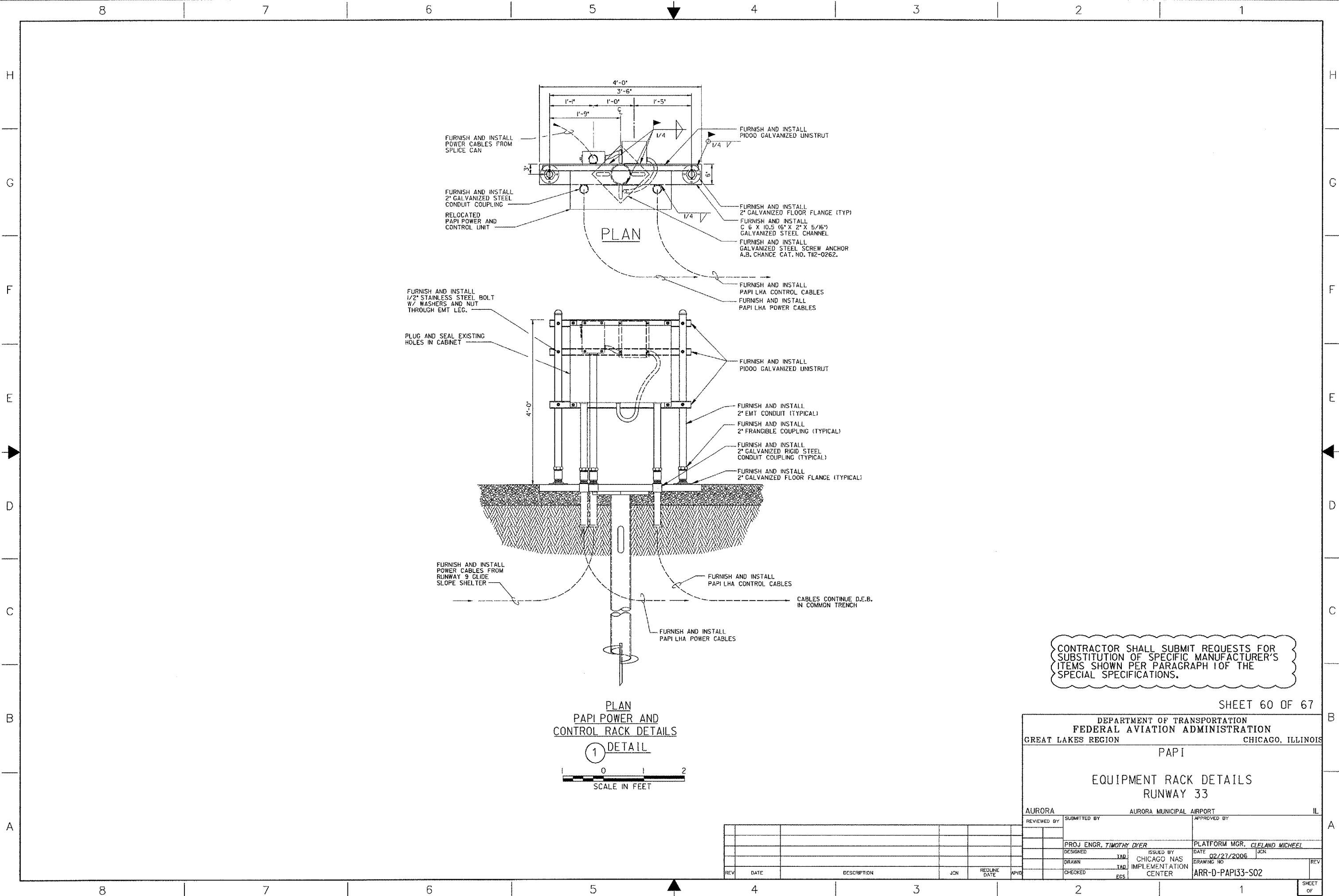


THIS DRAWING PRODUCED ON THE GREAT LAKES REGION MICROSTATION SYSTEM



CONTRACTOR SHALL SUBMIT REQUESTS FOR SUBSTITUTION OF SPECIFIC MANUFACTURER'S ITEMS SHOWN PER PARAGRAPH 10F OF THE SPECIAL SPECIFICATIONS.

SHEET 60 OF 67

DEPARTMENT OF TRANSPORTATION
FEDERAL AVIATION ADMINISTRATION
GREAT LAKES REGION CHICAGO, ILLINOIS

PAPI
EQUIPMENT RACK DETAILS
RUNWAY 33

AURORA		AURORA MUNICIPAL AIRPORT		IL
REVIEWED BY	SUBMITTED BY	APPROVED BY		
	PROJ ENGR. <i>TIMOTHY DYER</i>	PLATFORM MGR. <i>CLELAND MICHEEL</i>		
DESIGNED	ISSUED BY	DATE	JCN	
DRAWN	CHICAGO NAS	02/27/2006		
CHECKED	IMPLEMENTATION	DRAWING NO	REV	
	CENTER	ARR-D-PAPI33-S02		

PLAN
PAPI POWER AND
CONTROL RACK DETAILS
1 DETAIL

1 0 1 2
SCALE IN FEET

REV	DATE	DESCRIPTION	JCN	REDLINE DATE	APPROVED

K:\Aurora\0428504\Draw\Sheets\FAA IL5 DDVs, CMT mod. 5-10-06\ARR-D-PAPI33-S02.dgn
5/10/2006 5:25:07 PM RNAME
46753