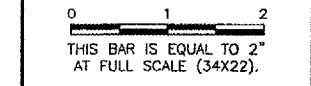


REVISIONS		
NUMBER	BY	DATE



DUPAGE AIRPORT  
 WEST CHICAGO, ILLINOIS  
 REHABILITATE TAXIWAYS ALPHA AND CHARLIE  
 ELECTRICAL DETAILS  
 SHEET 2


**CMT**  
 CRAWFORD, MURPHY & TILLY, INC.  
 CONSULTING ENGINEERS  
 License No. 184-000613

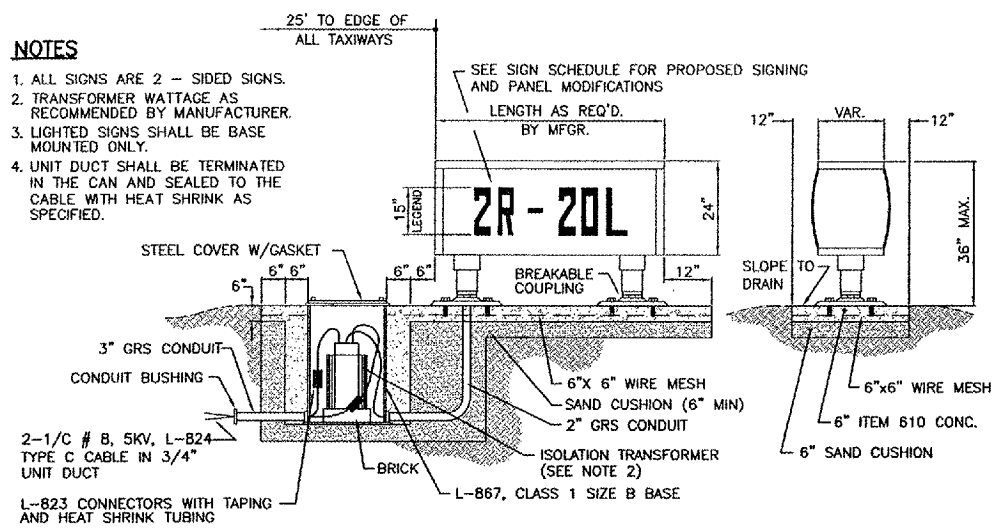

**DPA**  
 DuPage Airport

DESIGN BY:	JRL
DRAWN BY:	JRO
CHECKED BY:	CAL
APPROVED BY:	DLP
DATE:	06/09/06
JOB No:	04257-05

ILLINOIS PROJECT: DPA-3454  
 A.I.P. PROJECT: 3-17-0017-B19

**NOTES**

- ALL SIGNS ARE 2 - SIDED SIGNS.
- TRANSFORMER WATTAGE AS RECOMMENDED BY MANUFACTURER.
- LIGHTED SIGNS SHALL BE BASE MOUNTED ONLY.
- UNIT DUCT SHALL BE TERMINATED IN THE CAN AND SEALED TO THE CABLE WITH HEAT SHRINK AS SPECIFIED.

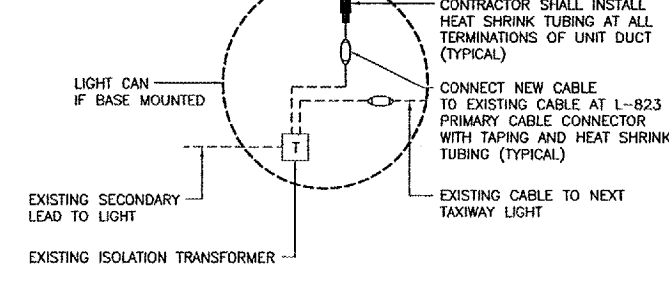


**HOLD LINE/TAXIWAY GUIDANCE SIGN L-858, SIZE 2, STYLE 2, CLASS 2**

NO SCALE

CONTRACTOR SHALL SUBMIT DETAILED SHOP DRAWING INCLUDING SIGN, COLOR, SIZE, PROPOSED LEGEND, IN ENOUGH DETAIL AND DETERMINE PROPOSED SPACING AND OTHER INFORMATION REQUIRED BY SPECIAL PROVISIONS. CONTRACTOR TO VERIFY PROPOSED SIGN LOCATIONS AND ORIENTATIONS WITH RESIDENT ENGINEER PRIOR TO INSTALLATION. SIGN MANUFACTURER SHALL MATCH EXISTING AIRFIELD SIGNS.

NEW 1/2" #8 L-824, TYPE C, 5KV AIRFIELD LIGHTING CABLE IN 3/4" UNIT DUCT OR GRS CONDUIT (TYP.) FROM LAST NEW TAXIWAY LIGHT

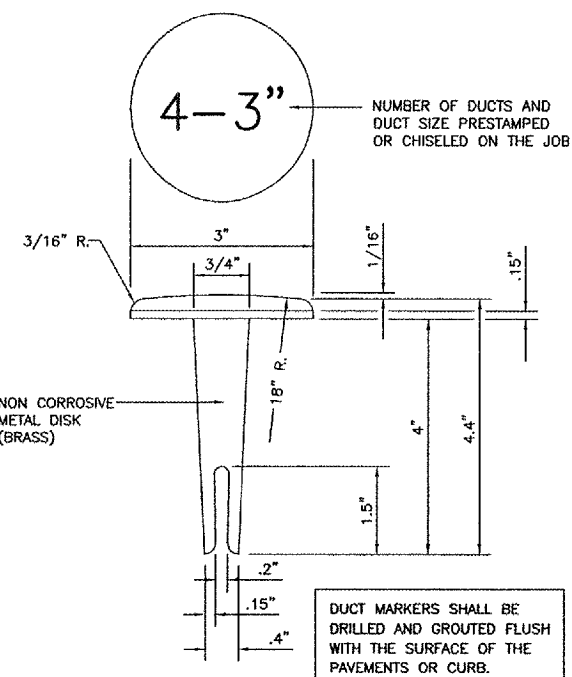


**RUNWAY/TAXIWAY LIGHTING CIRCUIT CONNECTION DETAIL**

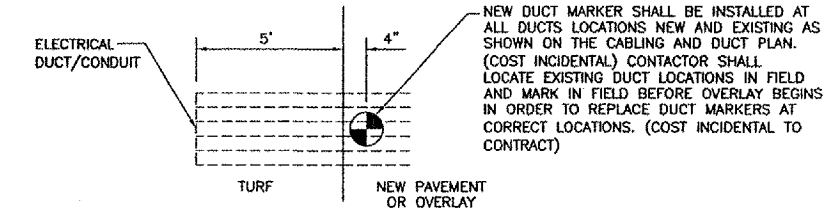
NOT TO SCALE

**GENERAL NOTES:**

- THE CONCRETE BASE FOR BASE MTD. LIGHTS AND SIGNS SHALL BE TROWEL FINISHED WITH A 45° BEVELED EDGE. SLOPE TO DRAIN (610).
- TRANSFORMER HOLDER SHALL BE ANY COMMERCIALY AVAILABLE BRICK.
- BREAKING GROOVE COUPLINGS SHALL NOT BE OVER 1" ABOVE GROUND LINE.
- ISOLATION TRANSFORMERS COME WITH A FACTORY INSTALLED PLUG (TYPE 1, CLASS A, STYLE 2) AND RECEPTACLE (TYPE 1, CLASS A, STYLE 9). A TYPE 1, CLASS B, STYLE 3 PLUG AND TYPE 1, CLASS B, STYLE 10 RECEPTACLE SHALL BE INSTALLED ON THE 1/2" No. 8, 5000 V., L-824 TYPE C CABLES FOR CONNECTION TO EACH TRANSFORMER.
- TO FURTHER REDUCE THE POSSIBILITY OF WATER/MOISTURE ENTRANCE INTO THE CONNECTOR BETWEEN THE CABLE AND THE FIELD ATTACHED CONNECTOR, IT IS REQUIRED THAT A HEAT SHRINKABLE TUBING WITH INTERNAL ADHESIVE BE APPLIED OVER THE ENTIRE CABLE CONNECTOR.
- ALL SIGNS, LIGHTS, CABLES AND TRANSFORMERS TO BE REMOVED SHALL REMAIN THE PROPERTY OF THE AIRPORT. AT THE DISCRETION OF THE AIRPORT DIRECTOR, THE CONTRACTOR MAY BE REQUIRED TO DISPOSE OF THESE MATERIALS OFFSITE.
- CONTRACTOR SHALL HAVE THE OPTION TO TRENCH OR PLOW UNIT DUCT. NO ADDITIONAL PAYMENT SHALL BE MADE FOR TRENCHING.
- ALL RUNWAY/TAXIWAY EDGE LIGHTS SHALL HAVE 2" DIA. COLUMN AND FRANGIBLE COUPLINGS, UNLESS NOTED OTHERWISE.

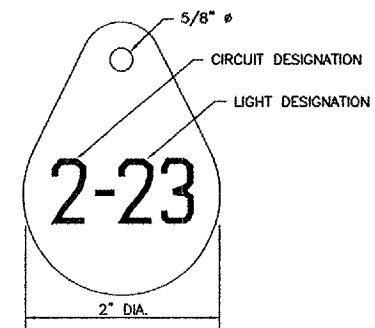


DUCT MARKERS SHALL BE DRILLED AND GROUTED FLUSH WITH THE SURFACE OF THE PAVEMENTS OR CURB.



**DUCT/CONDUIT MARKER DETAIL**

NOT TO SCALE

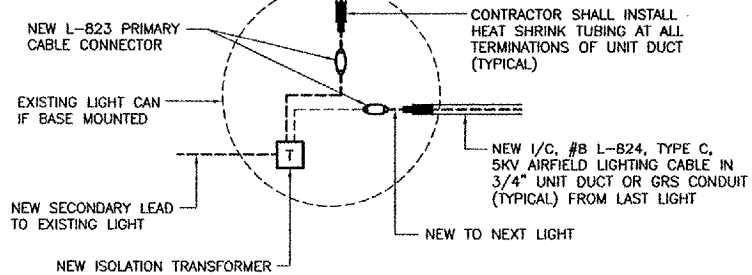


**LIGHT IDENTIFICATION DETAIL**

NOT TO SCALE

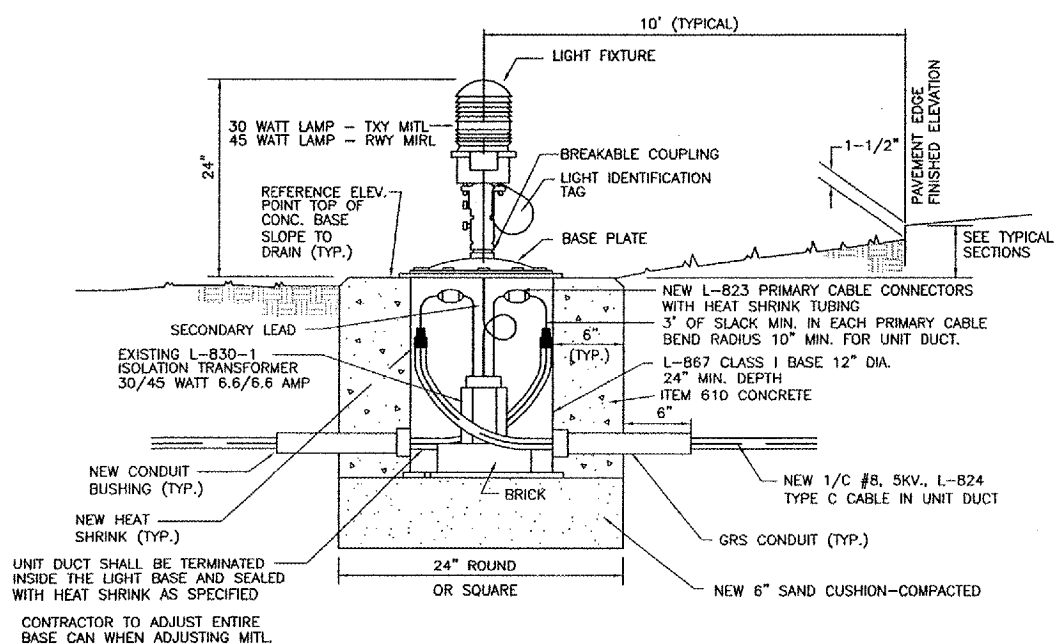
- NOTES:**
- INSTALL A NONCORROSIVE DISC OF 2" MINIMUM DIAMETER WITH THE NUMBER PERMANENTLY STAMPED, CUT OUT, OR ENGRAVED UNDER THE HEAD OF THE BASE PLATE BOLT OR ATTACHED TO LIGHT FLANGE WITH A SET SCREW.
  - NUMERALS SHOWN ARE FOR ILLUSTRATIVE PURPOSES ONLY. ALL EXISTING AND NEW TAXIWAY LIGHTS SHALL BE TAGGED AS DIRECTED BY THE RESIDENT ENGINEER. ALL LIGHTS ON EXISTING CIRCUITS THAT HAVE LIGHTING IMPROVEMENTS (NEW OR RELOCATED LIGHTS) SHALL BE RETAGGED.
  - COST OF TAGGING LIGHTS SHALL NOT BE PAID FOR SEPERATELY BUT SHALL BE CONSIDERED INCIDENTAL TO THE CONTRACT.

NEW 1/2" #8 L-824, TYPE C, 5KV AIRFIELD LIGHTING CABLE IN 3/4" UNIT DUCT OR GRS CONDUIT (TYPICAL) FROM LAST LIGHT



**RETROFITTED RUNWAY/TAXIWAY/SIGN CONNECTION DETAIL**

NO SCALE



**NEW/ ADJUSTMENT/ RELOCATED BASE MOUNTED MEDIUM INTENSITY LIGHT**

NOT TO SCALE

UNIT DUCT SHALL BE TERMINATED INSIDE THE LIGHT BASE AND SEALED WITH HEAT SHRINK AS SPECIFIED  
 CONTRACTOR TO ADJUST ENTIRE BASE CAN WHEN ADJUSTING MITL.