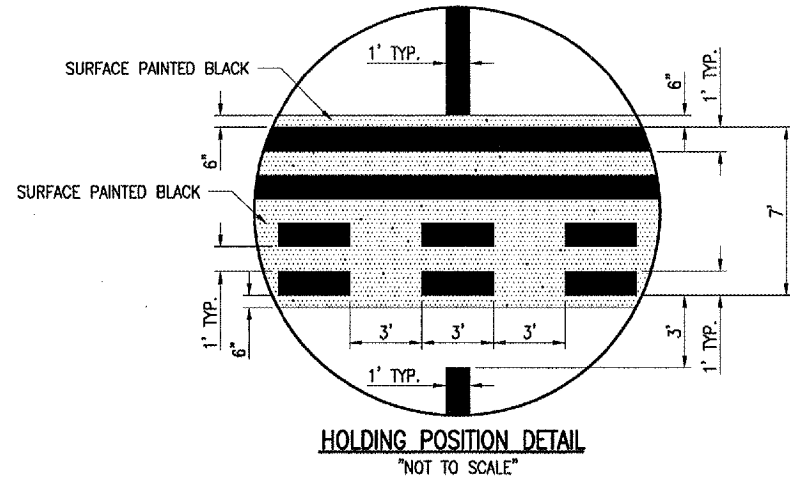


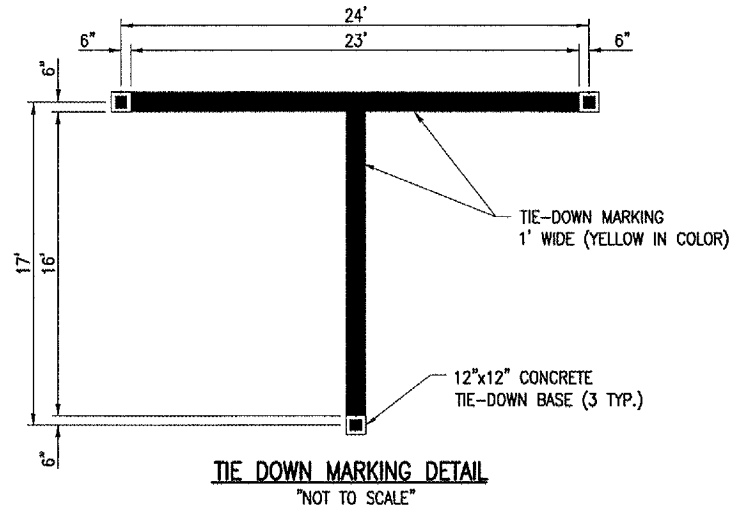
DATE	REVISION	BY

FAIRFIELD MUNICIPAL AIRPORT
FAIRFIELD, ILLINOIS

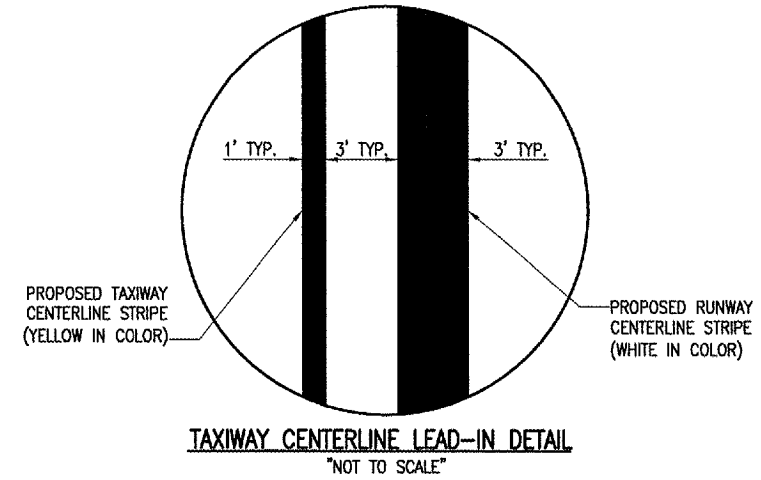
IL. PROJ.: FWC-3547 A.I.P. PROJ.: 3-17-0043-BB



HOLDING POSITION DETAIL
"NOT TO SCALE"



TIE DOWN MARKING DETAIL
"NOT TO SCALE"



TAXIWAY CENTERLINE LEAD-IN DETAIL
"NOT TO SCALE"

620-PAVEMENT MARKING-WATERBORNE NOTES

THE PAVEMENT MARKING-WATERBORNE (620) SHALL BE PLACED IN ACCORDANCE WITH ITEM 620 "PAVEMENT MARKING" AS STATED ON PAGE 77 OF THE SUPPLEMENTAL SPECIFICATIONS AND RECURRING SPECIAL PROVISIONS, ADOPTED JULY 1, 2004.

THIS ITEM SHALL CONSIST OF RUNWAY AND HOLDING LINE MARKING IN ACCORDANCE WITH THESE SPECIFICATIONS AND AT THE LOCATIONS SHOWN ON THE CONSTRUCTION PLANS. ALL RUNWAY MARKING WILL BE WHITE IN COLOR AND THE HOLDING LINE MARKING WILL BE YELLOW IN COLOR WITH A BLACK OUTLINE. THE PROPOSED PAVEMENT MARKING WILL BE APPLIED IN TWO APPLICATIONS.

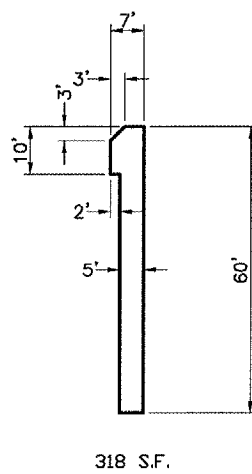
ANY MATERIAL DELIVERED THAT FAILS TO MEET THE SPECIFICATIONS SHALL BE DISPOSED OF BY THE VENDOR AND IMMEDIATELY REPLACED WITH ACCEPTABLE MATERIAL ENTIRELY AT THE VENDOR'S EXPENSE, INCLUDING HANDLING AND TRANSPORTATION CHARGES.

ALL PROPOSED MARKING WILL BE COMPLETED IN ACCORDANCE WITH THE DETAILS SHOWN ON THE CONSTRUCTION PLANS.

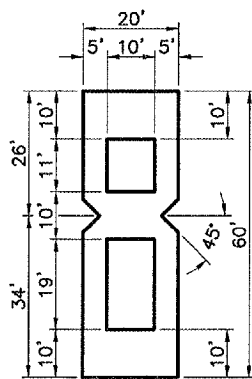
GLASS BEADS SHALL BE REQUIRED ONLY ON THE SECOND APPLICATION.

CUT-OFF SHEETS WILL BE REQUIRED TO INSURE STRAIGHT EDGES.

THE PROPOSED MARKING WILL BE PAID FOR UNDER ITEM:
AR620520 PAVEMENT MARKING-WATERBORNE ___ 8,423 S.F.

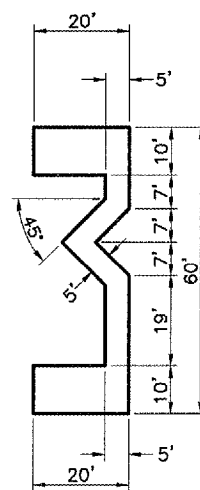


318 S.F.

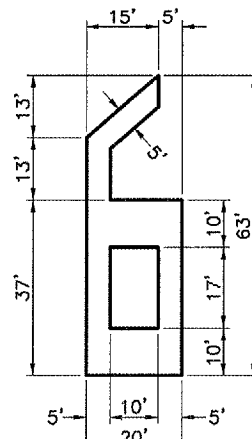


876 S.F.

NUMERAL DETAILS
"NOT TO SCALE"



634 S.F.



712 S.F.

MARKING QUANTITIES			
DESCRIPTION	UNIT AREA	NO. REQUIRED	TOTAL AREA
Q. STRIPE (SOLID)	360	9.33	3,360
NUMBER 1 (SOLID)	318	1	318
NUMBER 3 (SOLID)	634	1	634
NUMBER 6 (SOLID)	712	1	712
NUMBER 8 (SOLID)	876	1	876
TOTAL WHITE			5,900
HOLDING LINE	90	2	180
TAXIWAY CENTERLINE	1,809	1	1,809
TIE DOWN	39	6	234
TOTAL YELLOW			2,223
BLACK	150	2	300
TOTAL BLACK			300
TOTAL MARKING			8,423

Project No. 805-06RWYD_0800	DATE 05/04/06
Filename R-151MRK.DWG	BAK 05/04/06
Scale N/A	DRAWN BAK 05/04/06
Date 05/04/06	REVIEWED CAH 05/26/06



RUNWAY 18-36
P.F.C. OVERLAY
PROPOSED
MARKING
DETAILS

JUN 29, 2006 3:11 PM DPE
I:\AIRPORTS\FAIRFIELD\805-06RWYD\AIRPORT\SHEETS\R-151MRK.DWG - DETAILS