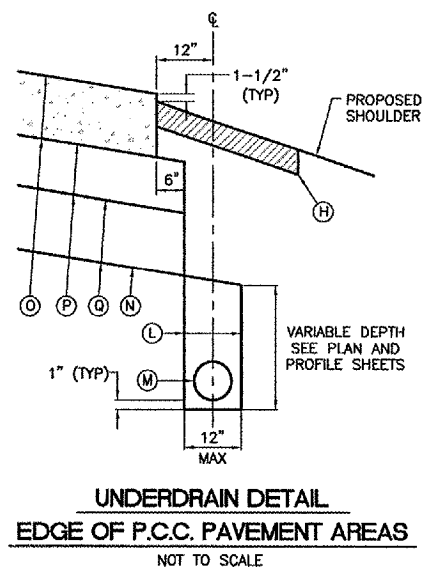
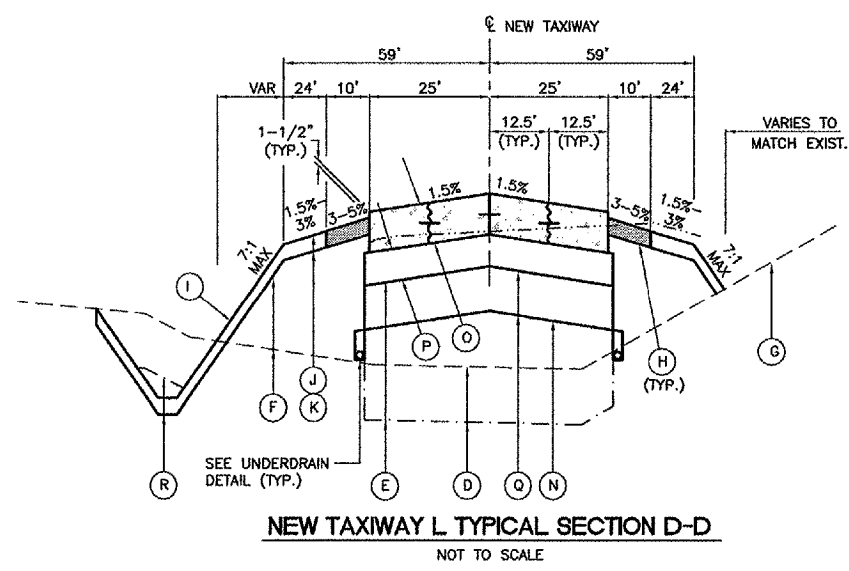


REVISIONS		
NUMBER	BY	DATE

0 1 2
 THIS BAR IS EQUAL TO 2"
 AT FULL SCALE (34X22).

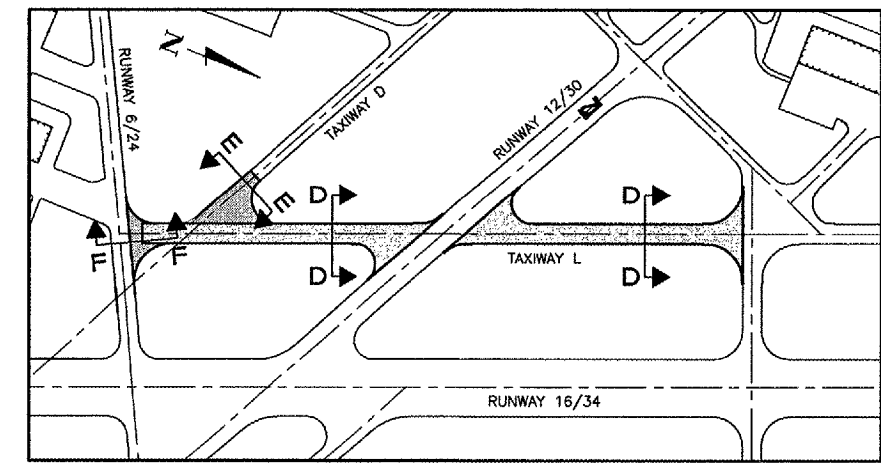
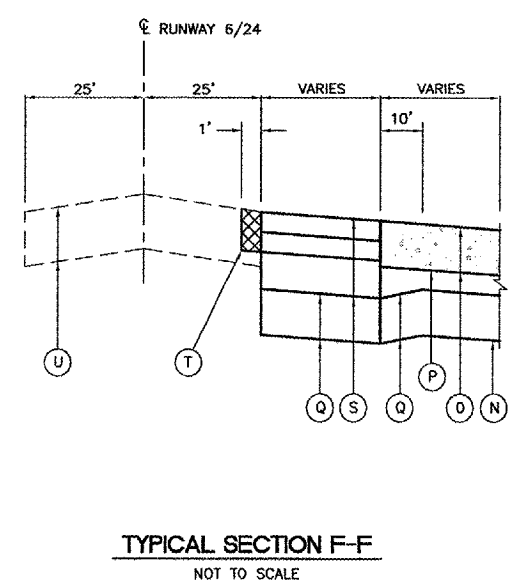
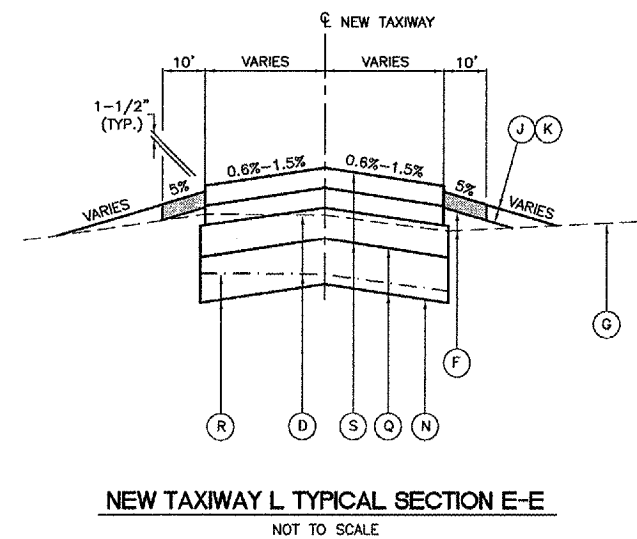


LEGEND

- (A) NEW 2" BITUMINOUS SURFACE COURSE (401)
 NEW 2" BITUMINOUS BASE COURSE (201)
 NEW 7" CRUSHED AGGREGATE BASE COURSE (209)
- (B) NEW TACK COAT (603)
- (C) NEW PRIME COAT (602)
- (D) PROPOSED 12" (AVG.) TOPSOIL STRIPPING (152)
- (E) PROPOSED EMBANKMENT FILL (152)
- (F) PROPOSED SHOULDER FILL (152)
- (G) EXISTING GROUND LINE
- (H) NEW 10' WIDE SOIL GUARD
- (I) PROPOSED GROUND LINE
- (J) PROPOSED TOPSOIL PLACEMENT (4" DEPTH) (905)
- (K) PROPOSED SEEDING AND MULCHING (901 AND 908)
- (L) PROPOSED POROUS BACKFILL (705)
- (M) NEW 6" CPPUP WITH SOCK (705)
- (N) NEW SOIL STABILIZATION FABRIC
- (O) NEW 10" P.C.C. PAVEMENT (501)
- (P) NEW 6" CRUSHED AGGREGATE BASE COURSE (209)
- (Q) NEW 12" POROUS GRANULAR EMBANKMENT (208)
- (R) PROPOSED UNCLASSIFIED EXCAVATION (152)
- (S) NEW 4" BITUMINOUS SURFACE COURSE (401)
 NEW 4" BITUMINOUS BASE COURSE (201)
 NEW 18" CRUSHED AGGREGATE BASE COURSE (209)
- (T) EXISTING BITUMINOUS PAVEMENT TO BE REMOVED
 TO A DEPTH OF 8"
- (U) EXISTING BITUMINOUS PAVEMENT (DEPTH VARIES 8"-12")

NOTES

1. FOR NEW P.C.C. PAVEMENTS, THE CRUSHED AGGREGATE BASE COURSE SHALL BE CONSTRUCTED TO 0'-6" BEYOND THE EDGE OF PAVEMENT. THE POROUS GRANULAR EMBANKMENT SHALL BE CONSTRUCTED TO 1'-6" BEYOND THE EDGE OF PAVEMENT.



**PALWAUKEE MUNICIPAL AIRPORT
 WHEELING/PROSPECT HEIGHTS, ILLINOIS
 TYPICAL SECTIONS - TAXIWAY L**

© Copyright CMT, Inc.
CMT
 CRAWFORD, MURPHY & TILLY, INC.
 CONSULTING ENGINEERS
 License No. BA-000613

DESIGN BY:	MLK
DRAWN BY:	JRO
CHECKED BY:	
APPROVED BY:	
DATE:	06/29/06
JOB No:	06290-07
ILLINOIS PROJECT: PWK-3613 A.I.P. PROJECT: 3-17-0018-B39	