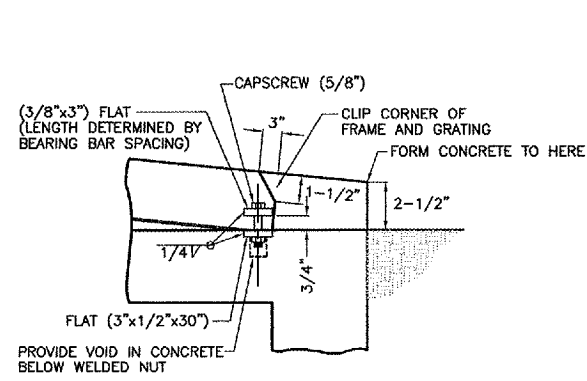
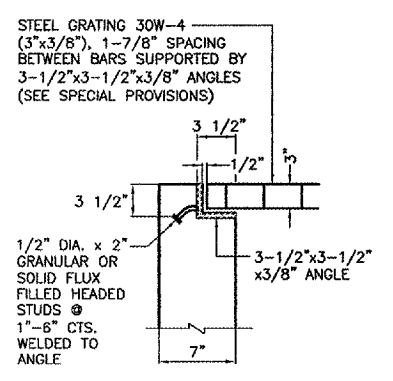


REVISIONS		
NUMBER	BY	DATE

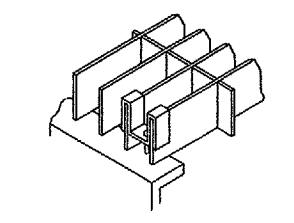
0 1 2
 THIS BAR IS EQUAL TO 2" AT FULL SCALE (34X22).



DETAIL A
NO SCALE

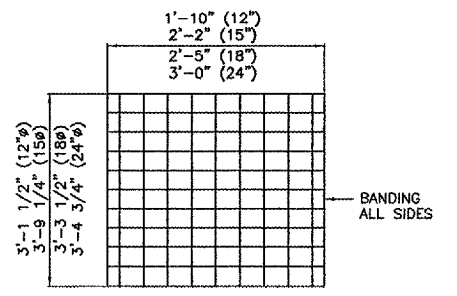


SECTION-B
NO SCALE



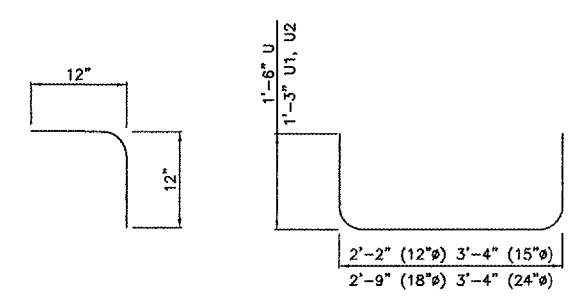
PROVIDE BENT-CLIP TYPE FASTENER FOR REMOVING PANELS (STAINLESS STEEL)

SADDLE CLIP
NO SCALE



GRATING DETAILS - PLAN VIEW

NO SCALE
 ONE SECTION OF GRATING DETAILED.
 TOTAL OF 3 SECTIONS REQUIRED FOR 12" & 15".
 TOTAL OF 4 SECTIONS REQUIRED FOR 18"
 TOTAL OF 5 SECTIONS REQUIRED FOR 24".
 SEE SPECIAL PROVISIONS FOR FURTHER DETAILS.

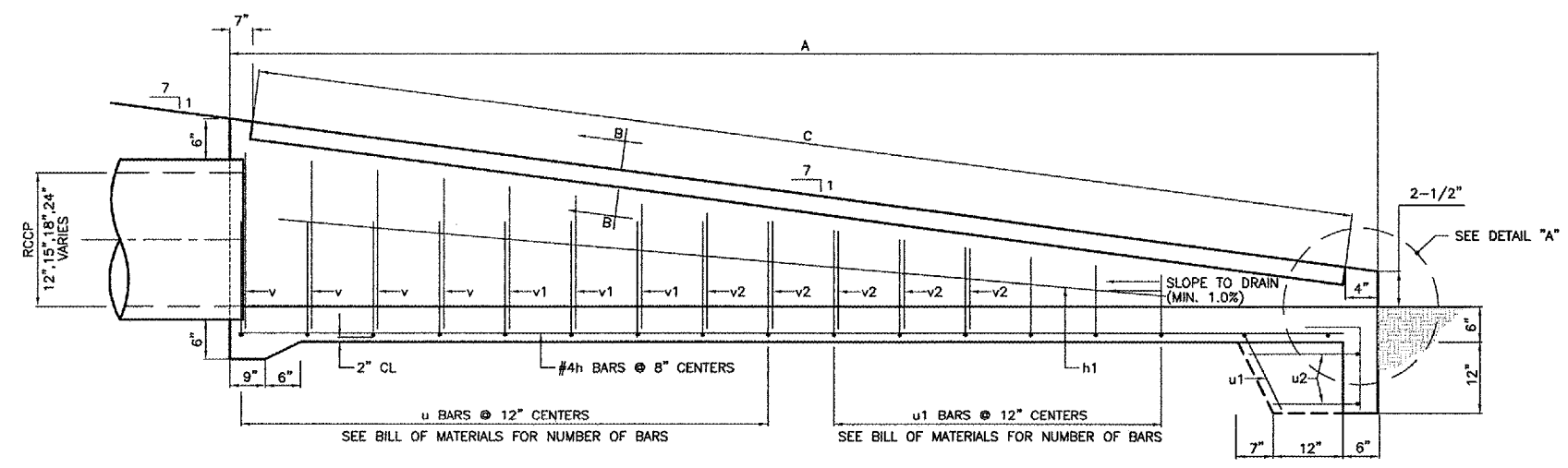


BAR L
NO SCALE

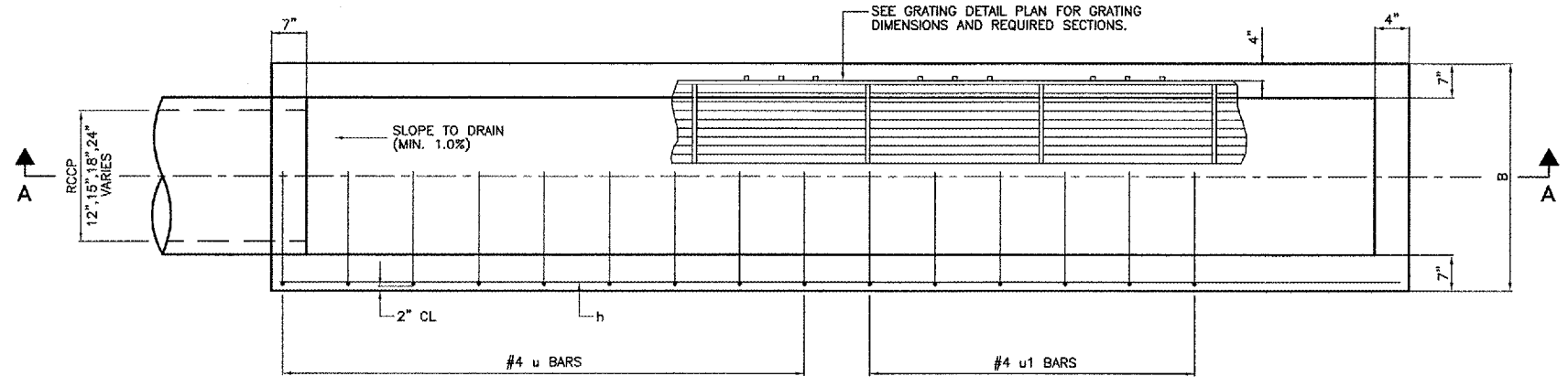
BAR U, U1 AND U2
NO SCALE

BILL OF MATERIALS
INLET BOX

TYPE	BAR	QUANTITY	SIZE	LENGTH
12"	h	4	#4	9'-11"
15"	h	4	#4	11'-7"
18"	h	6	#4	13'-8"
24"	h	6	#4	17'-6"
12"	h1	2	#4	8'-0"
15"	h1	2	#4	10'-0"
18"	h1	2	#4	12'-0"
24"	h1	2	#4	15'-0"
12"	L	4	#4	2'-0"
15"	L	4	#4	2'-0"
18"	L	4	#4	2'-0"
24"	L	4	#4	2'-0"
12"	U	4	#4	5'-2"
15"	U	6	#4	5'-6"
18"	U	8	#4	5'-9"
24"	U	12	#4	6'-4"
12"	U1	4	#4	4'-8"
15"	U1	3	#4	5'-0"
18"	U1	4	#4	5'-3"
24"	U1	4	#4	5'-10"
12"	U2	2	#4	4'-8"
15"	U2	2	#4	5'-0"
18"	U2	2	#4	5'-3"
24"	U2	2	#4	5'-10"
12"	V	4	#4	1'-4"
15"	V	4	#4	1'-8"
18"	V	6	#4	1'-10"
24"	V	6	#4	2'-5"
12"	V1	-	#4	-
15"	V1	4	#4	1'-4"
18"	V1	6	#4	1'-5"
24"	V1	6	#4	2'-0"
12"	V2	-	#4	-
15"	V2	-	#4	-
18"	V2	-	#4	-
24"	V2	8	#4	1'-6"
CONCRETE STRUCTURES				
12"Ø	CU.YD.	2		
15"Ø	CU.YD.	2		
18"Ø	CU.YD.	3		
24"Ø	CU.YD.	3		
REINFORCEMENT BARS				
12"Ø	POUND	85		
15"Ø	POUND	100		
18"Ø	POUND	145		
24"Ø	POUND	200		
GRATING				
12"Ø	SQ.FT.	18		
15"Ø	SQ.FT.	25		
18"Ø	SQ.FT.	32		
24"Ø	SQ.FT.	51		



SECTION A-A
NO SCALE



PLAN
NO SCALE

TABLE OF DIMENSIONS

DIMENSION	12"Ø	15"Ø	18"Ø	24"Ø
A	10'-3"	12'-1"	14'-0"	17'-10"
B	2'-6"	2'-10"	3'-1"	3'-8"
C	9'-5"	11'-4"	13'-3"	17'-1"

PALWAUKEE MUNICIPAL AIRPORT
WHEELING/PROSPECT HEIGHTS, ILLINOIS
SLOPE BOX INLET DETAILS

© copyright CMT, Inc.
CMT
 CRAWFORD, MURPHY & TILLY, INC.
 CONSULTING ENGINEERS
 License No. 184-000613

DESIGN BY: ATI
 DRAWN BY: JRO
 CHECKED BY:
 APPROVED BY:
 DATE: 06/29/06
 JOB No: 06290-07
 ILLINOIS PROJECT: PWK-3613
 A.I.P. PROJECT: 3-17-0018-B39
 SHEET 23 OF 40 SHEETS