

LEGEND

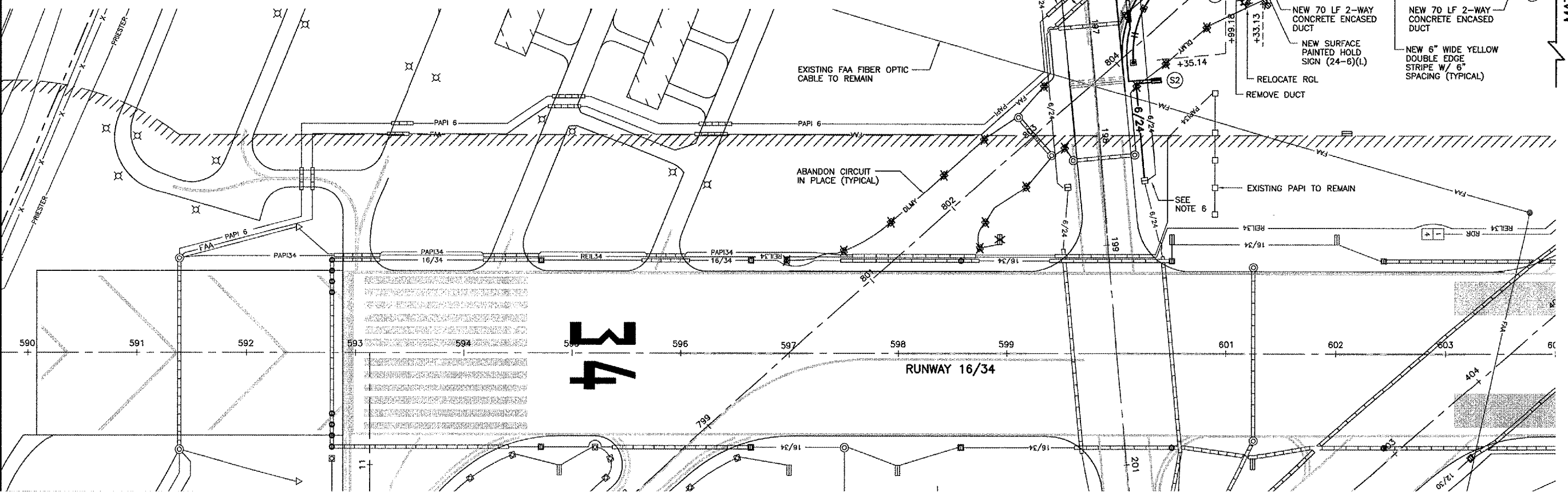
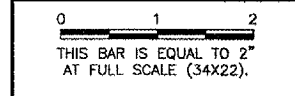
- EXISTING BASE/STAKE MOUNTED MEDIUM INTENSITY TAXIWAY LIGHT
- ⊞ EXISTING BASE/STAKE MOUNTED/IN-PAVEMENT HIGH INTENSITY RUNWAY LIGHT
- ⊞ EXISTING AIRFIELD GUIDANCE SIGN
- EXISTING CONDUIT/DUCT BANK
- ⊙ EXISTING ELECTRIC/STORM/SANITARY MANHOLE/WATER VALVE VAULT
- ⊞ EXISTING ELECTRIC HANDHOLE
- 16/34 EXISTING RUNWAY 16/34 CIRCUIT
- 6/24 EXISTING RUNWAY 6/24 CIRCUIT
- G/D EXISTING TAXIWAY G AND D CIRCUIT
- DLMY EXISTING TAXIWAY D,L,M,N,Y AND 2 CIRCUIT
- ABEF EXISTING TAXIWAY A,B,E AND F CIRCUIT
- REIL EXISTING REIL CABLES
- FAA-E EXISTING FAA CABLES
- RGL EXISTING RUNWAY GUARD LIGHT CIRCUIT
- RDR EXISTING RUNWAY DISTANCE REMAINING CIRCUIT
- PAPI 6 EXISTING RUNWAY 6 PAPI CIRCUIT (3 #4 XLP-USE, 1 #8 GND. IN 2" PVC CONDUIT 1-6 PAIR #18 SHIELDED IN 2" PVC W/ BARE COUNTERPOISE)
- REIL 12 EXISTING RUNWAY 12 REIL CIRCUIT (2 #4 XLP-USE, 1 #8 GND. IN 2" PVC CONDUIT)
- REIL 12 NEW RUNWAY 12 REIL CIRCUIT (2 #4 XLP-USE, 1 #8 GND. IN 2" PVC CONDUIT)
- PAPI 12 EXISTING RUNWAY 12 PAPI CIRCUIT (3 #4 XLP-USE, 1 #8 GND. IN 2" PVC CONDUIT 1-6 PAIR #18 SHIELDED IN 2" PVC W/ BARE COUNTERPOISE)
- NEW BASE MOUNTED MEDIUM INTENSITY QUARTZ TAXIWAY LIGHT
- ⊞ NEW BASE/IN-PAVEMENT QUARTZ RUNWAY LIGHT - A - AMBER LENSE
 W - WHITE LENSE
 R - RED LENSE
 G - GREEN LENSE
 M - OBSCURED/MASKED LENSE
- ⊞ NEW AIRFIELD GUIDANCE SIGN
- S NEW SPlice CAN
- ⊞ NEW ELECTRIC HANDHOLE
- NEW CONDUIT/DUCT BANK
- 12/30 NEW RUNWAY 12/30 CIRCUIT
- 6/24 NEW RUNWAY 6/24 CIRCUIT
- DLY NEW TAXIWAY D,L AND Y CIRCUIT
- RGL NEW RUNWAY GUARD LIGHT CIRCUIT
- NEW 1/C #8, 5KV, L-824, TYPE C CABLE IN 2" PVC CONDUIT, DIRECT BURIED
 NUMBER OF TICK MARKS INDICATE NUMBER OF CABLES
 (TYPICAL FOR ALL AIRFIELD LIGHTING CIRCUITS)
- X ITEM TO BE REMOVED

NOTES:

1. ALL EXISTING TAXIWAY AND RUNWAY AIRFIELD LIGHTING CIRCUITS, FAA CABLES AND OTHER AIRPORT ELECTRICAL CABLES SHALL REMAIN IN SERVICE UNTIL REPLACED AS DIRECTED BY THE ENGINEER. ALL TEMPORARY CABLING AND SPLICING SHALL BE CONSIDERED INCIDENTAL TO CONTRACT.
2. AT ANY LOCATION WHERE THE PROPOSED DUCT OR CABLE ROUTE CROSSES AN EXISTING UTILITY, THE CONTRACTOR SHALL HAND DIG AND LOCATE THE EXISTING UTILITY PRIOR TO TRENCHING. COST OF LOCATING ALL EXISTING UTILITIES SHALL BE INCIDENTAL TO THE CONTRACT.
3. THE LOCATION OF EXISTING UTILITIES ARE APPROXIMATE. THE CONTRACTOR SHALL OPEN THE ENTIRE TRENCH BETWEEN MANHOLES BEFORE ANY CONDUIT IS LAID TO ASCERTAIN THE EXISTENCE AND POSITION OF ANY OBSTRUCTIONS.
4. CONTRACTOR SHALL COORDINATE THE LOCATION OF THE EXISTING AND PROPOSED UTILITIES PRIOR TO INSTALLATION OF THE PROPOSED UNIT DUCTS, CONDUITS AND DUCT BANKS. ANY DAMAGES TO EXISTING UTILITIES SHALL BE REPAIRED IMMEDIATELY AT THE CONTRACTOR'S EXPENSE.
5. CONTRACTOR SHALL PROVIDE PULL WIRE FOR ALL DUCT BANKS AND CAP THE UNUSED DUCT BANKS FOR FUTURE USE.
6. CONTRACTOR SHALL CONNECT EXISTING CABLE TO PROPOSED CABLE IN SIGN/LIGHT/MANHOLE/HANDHOLE/SPLICE CAN. COST OF CONNECTION INCIDENTAL TO CABLE.
7. NO 90 DEGREE BENDS WILL BE ALLOWED IN CONDUIT.
8. CONTRACTOR SHALL CORE HOLES INTO EXISTING MANHOLES/HANDHOLES. THE COST OF CORING AND GROUTING SHALL BE INCIDENTAL TO THE INSTALLATION OF THE PROPOSED CABLE.
9. ALL LIGHTS AND SIGNS SHALL HAVE QUARTZ BULBS.
10. AT EXISTING DUCT BANKS THAT FALL WITHIN THE PROPOSED P.C.C. PAVEMENT, THE CONTRACTOR SHALL STAMP THE DUCT LOCATION, AS DIRECTED BY THE ENGINEER, IN THE PROPOSED P.C.C.
11. SPLICE EXISTING 600V CABLES TO NEW 600V CABLES WITH WATERPROOF SPLICE. COST OF SPLICES SHALL BE INCIDENTAL TO CABLE.

REVISIONS

NUMBER	BY	DATE



PALWAUKEE MUNICIPAL AIRPORT
WHEELING/PROSPECT HEIGHTS, ILLINOIS
LIGHTING AND PAVEMENT MARKING PLAN
TAXIWAY L
STA. 399+00 TO STA. 404+00

© Copyright CMT, Inc.

CMT
 CRAWFORD, MURPHY & TILLY, INC.
 CONSULTING ENGINEERS
 License No. 184-008613

DESIGN BY:	MJS
DRAWN BY:	JRO
CHECKED BY:	AB
APPROVED BY:	
DATE:	06/29/06
JOB No:	06290-07
ILLINOIS PROJECT: PWK-3613 A.I.P. PROJECT: 3-17-0018-B39	
SHEET	26 OF 40 SHEETS