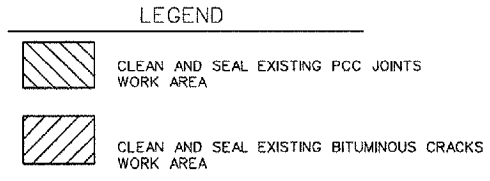
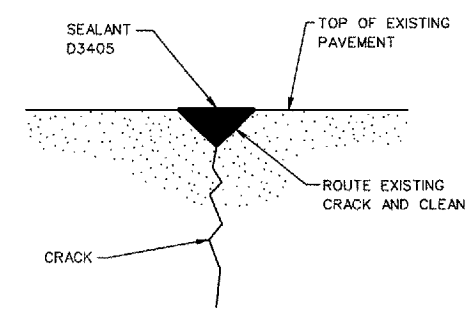
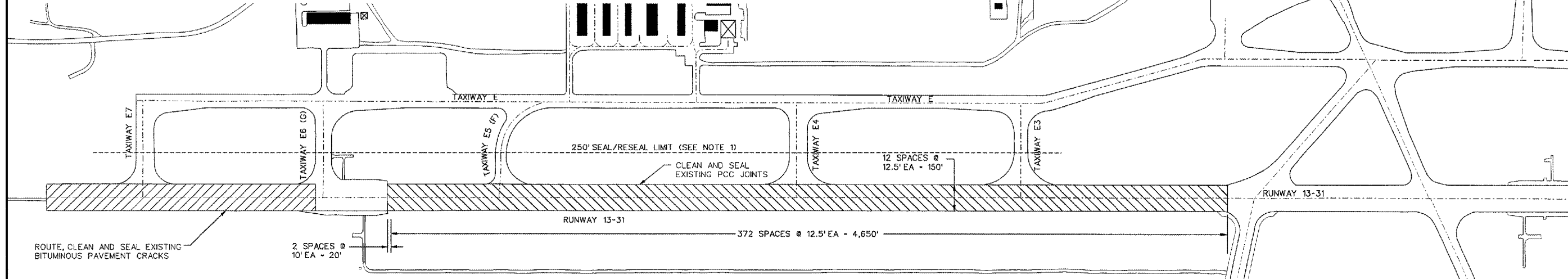
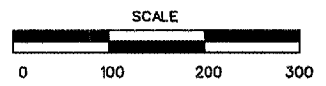


REVISIONS		
NUMBER	BY	DATE

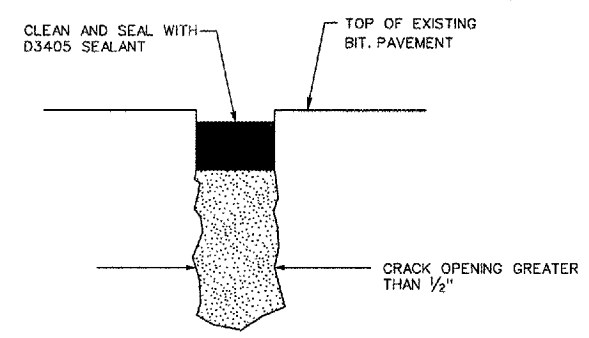
0 1 2
 THIS BAR IS EQUAL TO 2"
 AT FULL SCALE (34X22).
 PLOT 1



- NOTES**
- 1) RESEAL JOINTS AND SEAL CRACKS OF INTERSECTING TAXIWAYS 250' AWAY FROM THE CENTERLINE OF RUNWAY 13-31, WITHIN THE SEAL/RESEAL WORK AREA LENGTH.
 - 2) SEE PROJECT SPECIFICATIONS FOR GUIDANCE ON REMOVAL/REUSE OF EXISTING JOINT MATERIAL AS BACKER MATERIAL.

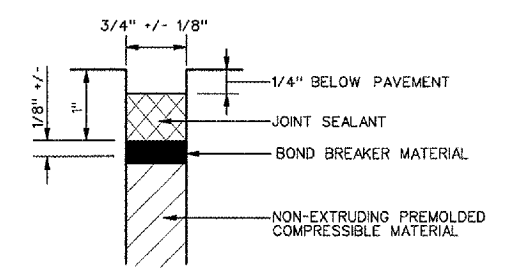


CRACK ROUTE & SEAL DETAIL
 N.T.S.

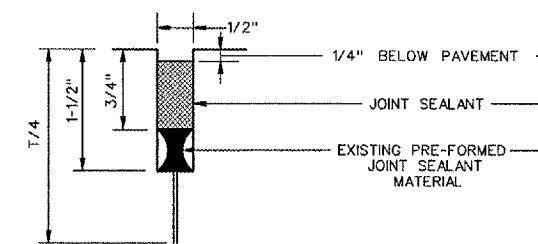


LARGE CRACK SEALING
 N.T.S.

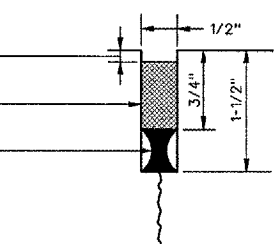
NOTE:
 AT CONTRACTORS OPTION, CRACKS GREATER THAN 1/2" MAY BE FILLED WITH BACKER ROD OR SAND WITHIN 1" OF PAVEMENT SURFACE IN LIEU OF ROUTING.



SEALANT DETAIL 1
 NOT TO SCALE

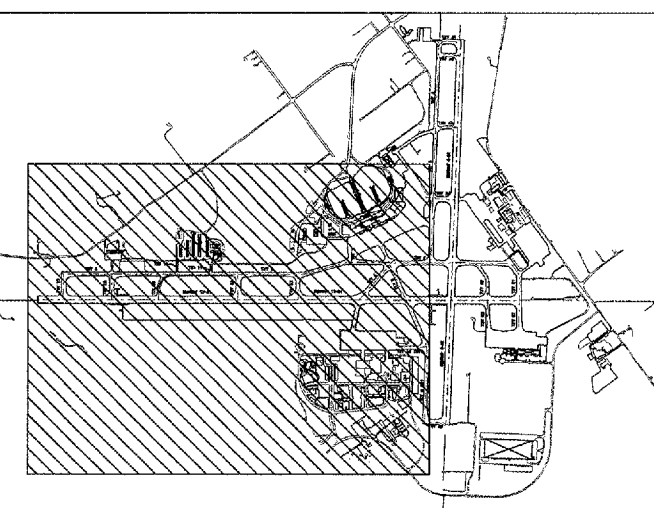


SEALANT DETAIL 2
 NOT TO SCALE

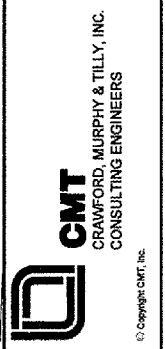


SEALANT DETAIL 3
 NOT TO SCALE

JOINT SEALANT DETAILS



RELOCATE TAXIWAYS A AND D FROM MID-FIELD INTERSECTION PHASE 2



IL PROJECT: PIA-3616
 AIP PROJ: 3-17-0080-XX

FILE: ...020_joint_sealing_plan.dgn
 DESIGN BY: TCS
 DRAWN BY: CAG
 CHECKED BY: TCS
 APPROVED BY: CET
 DATE: MAY 12, 2006
 JOB No: 04061-03-03

JOINT & CRACK SEALING PLAN

7/13/2006 k:\peoria\0-06103_03\draw\sheets\020_joint_sealing_plan.dgn