

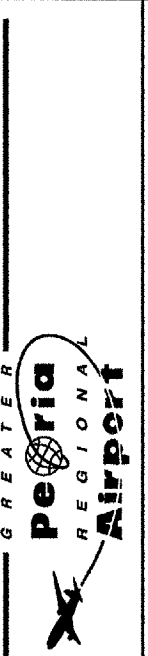
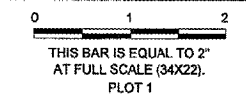
REVISIONS		
NUMBER	BY	DATE

STRUCTURE	EXISTING RIM EL.	PROPOSED RIM EL.
INLET *7	654.35	651.93
INLET *8	654.38	651.26
INLET *18	644.63	645.24

GENERAL NOTES:

1. CONCRETE SHALL HAVE A MINIMUM 28 DAY COMPRESSIVE STRENGTH OF 4000 PSI.
2. ALL REINFORCEMENT SHALL CONFORM TO ASTM-A615, GRADE 60.
3. ALL CONCRETE WORK SHALL CONFORM TO ACI-318-02.
4. SAWCUT EXIST. CONCRETE AT LOCATIONS OF PROPOSED STRUCTURE.
5. EXPOSED TOP SURFACE TO RECEIVE A BROOM FINISH.
6. REMOVE THE EXISTING TOP TO A DEPTH OF 24" BELOW THE PROPOSED TOP GRADE.

TABLE OF DIMENSIONS									
SIZE OF PIPE		DIMENSIONS			LENGTH OF BARS			QUANTITIES	
LARGE IN.	SMALL IN.	A & B FT-IN	C FT-IN	A(*5) 12 REQ'D FT-IN.	B(*6) 4 REQ'D FT-IN.	C(*4) 8 REQ'D FT-IN.	CONC. CU.YD.	STEEL LBS.	
12	12	2-8	1-0	2-5	5-10	0-9	0.21	70	
15	12	3-0	1-0	2-9	6-6	0-9	0.27	77	
	15						0.25		
18	12	3-3	1-0	3-0	7-0	0-9	0.33	84	
	15						0.32		
	18						0.30		
21	12	3-6	1-0	3-3	7-6	0-9	0.36	90	
	15						0.34		
	18						0.33		
24	15	3-10	1-0	3-6	8-2	0-9	0.44	97	
	18						0.40		
	24						0.36		
30	18	4-5	1-4	4-2	9-4	1-0	0.71	114	
	24						0.66		
	30						0.60		
36	24	5-0	1-4	4-9	10-6	1-0	0.88	128	
	30						0.79		
	36						0.76		
42	30	5-7	1-4	5-4	11-8	1-0	1.05	142	
	36						0.98		
	42						0.89		
48	36	6-2	1-4	6-0	12-10	1-0	1.22	158	
	42						1.13		
	48						1.03		
54	42	7-1	1-8	6-9	14-8	1-6	2.02	181	
	48						1.90		
	54						1.76		
60	48	7-8	1-8	7-5	15-10	1-6	2.27	196	
	54						2.13		
	60						1.97		
66	54	8-3	2-0	8-0	17-0	1-9	3.04	210	
	60						2.85		
	66						2.65		
72	60	8-10	2-0	7-7	18-2	1-9	3.36	225	
	66						3.16		
	72						2.93		



RELOCATE TAXIWAY A AND D FROM MID-FIELD INTERSECTION PHASE 2

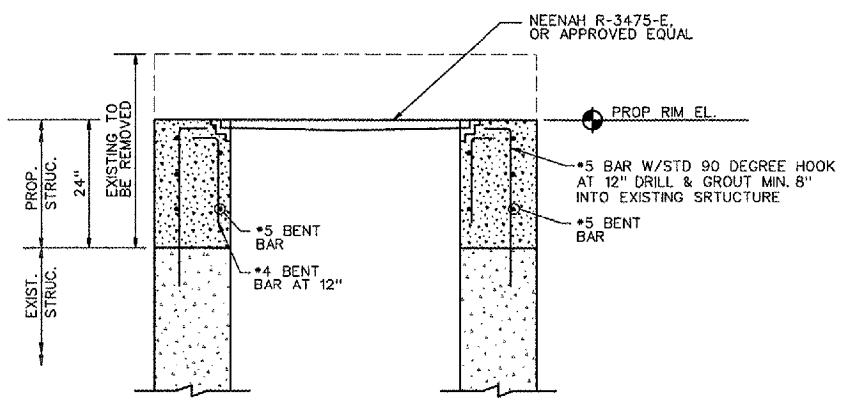


IL PROJECT: PIA-3616
AIP PROJ: 3-17-0080-XX

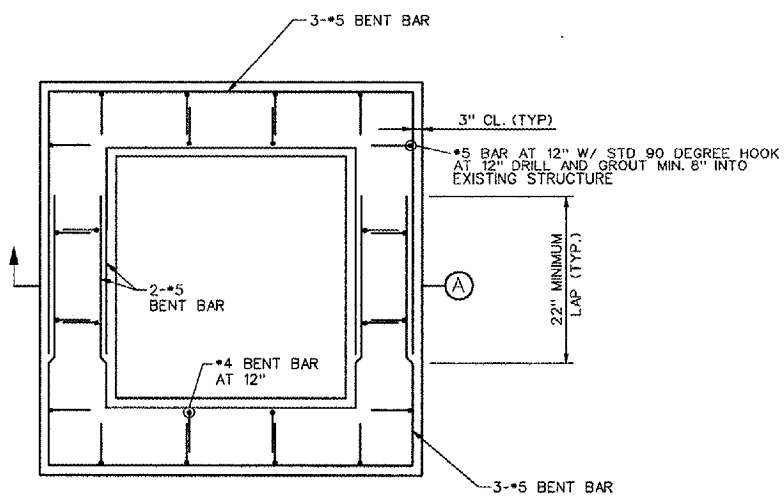
FILE: ...1043_drainage_details_2.dgn
DESIGN BY: JDJ
DRAWN BY: JSP
CHECKED BY: JDJ
APPROVED BY: CET
DATE: JUNE 30, 2006
JOB No: 04061-03-02

DRAINAGE DETAILS
SHEET 2 OF 8

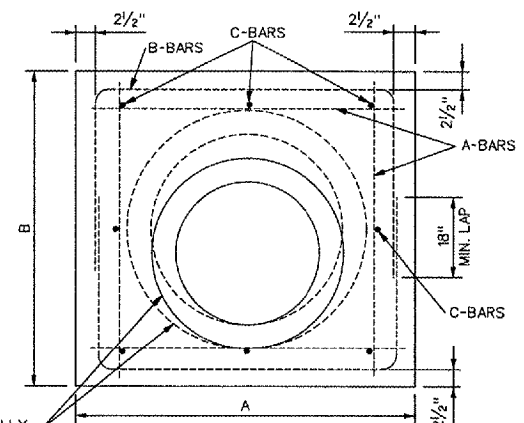
SHEET 43 OF 107 SHEETS



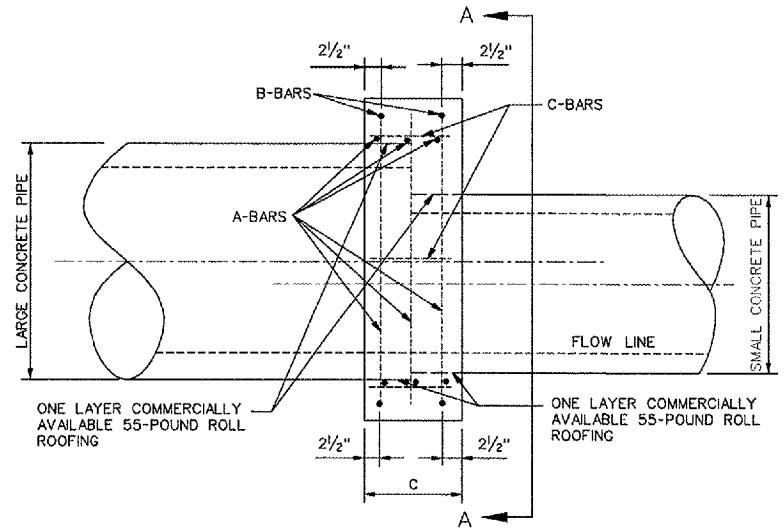
SECTION A



1 INLET ADJUSTMENT DETAIL
NOT TO SCALE



SECTION A-A



ELEVATION
(FOR CONCRETE PIPE TO CONCRETE PIPE)
TYPE A COLLAR

7/13/2006 K:\peoria\040610302\draw\sheet\043_drainage_details_2.dgn