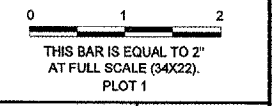
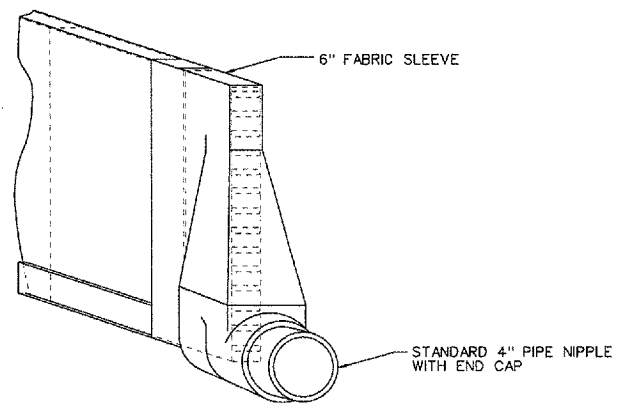


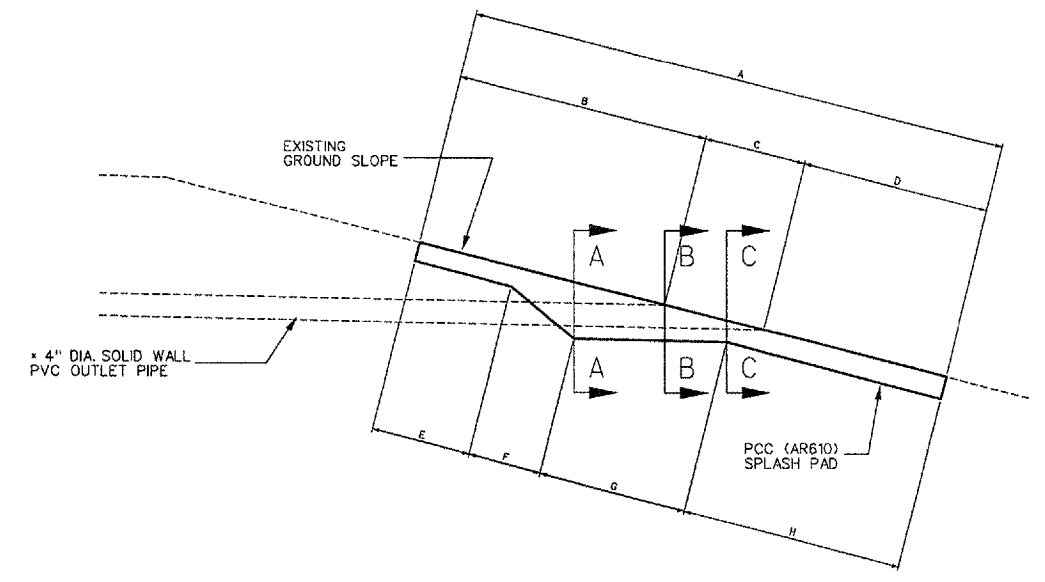
REVISIONS		
NUMBER	BY	DATE



ITEM	2:1	3:1	4:1	6:1
A	5.48'	6.19'	6.95'	8.58'
B	2.70'	3.07'	3.46'	4.28'
C	0.78'	1.12'	1.49'	2.30'
D	2.00'	2.00'	2.00'	2.00'
E	2.00'	2.00'	2.00'	2.00'
F	0.46'	0.61'	0.78'	1.18'
G	0.71'	1.07'	1.46'	2.27'
H	2.31'	2.51'	2.71'	3.13'
CONC.	0.15 C.Y.	0.17 C.Y.	0.20 C.Y.	0.25 C.Y.

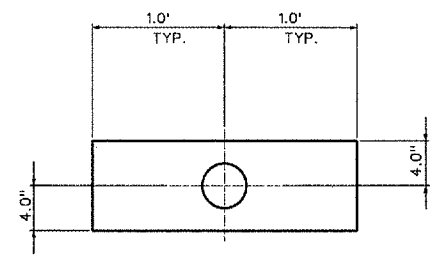


1 VERTICAL EDGE DRAIN END CAP CLEANOUT DETAIL
NOT TO SCALE

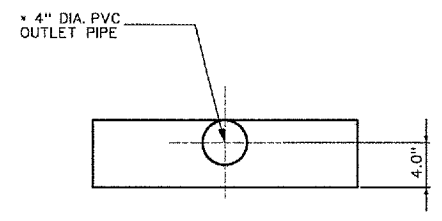


3 UNDERDRAIN DAYLIGHT DETAIL
NOT TO SCALE

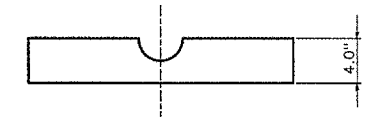
NOTE:
 PRECAST CONCRETE SPLASH PADS MAY BE INSTALLED AS APPROVED BY THE ENGINEER.
 TOP OF SPLASH PAD SHALL MATCH EXISTING CROSS SLOPE. CONSTRUCT BEND IN SPLASH PAD WHERE CROSS SLOPE CHANGES.
 DIMENSIONS ARE APPROXIMATE AND CAN BE ADJUSTED AS DIRECTED BY THE ENGINEER.



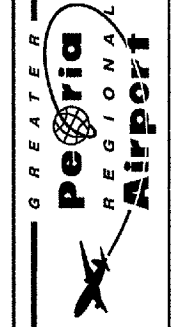
SECTION A-A



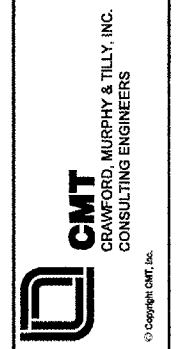
SECTION B-B



SECTION C-C



RELOCATE TAXIWAYS A AND D FROM MID-FIELD INTERSECTION PHASE 2



IL PROJECT: PIA-3616 AIP PROJ: 3-17-0080-XX
FILE: ...025_drainage_details_2.dgn
DESIGN BY: TCS
DRAWN BY: CAG
CHECKED BY: TCS
APPROVED BY: CET
DATE: MAY 12, 2006
JOB No: 04061-03-03
DRAINAGE DETAILS SHEET 7 OF 8
SHEET 48 OF 107 SHEETS