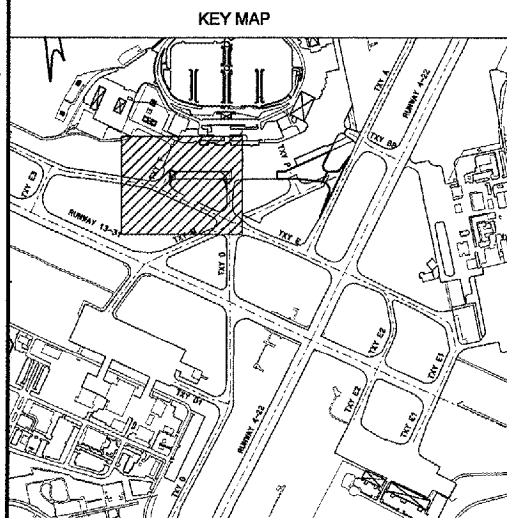
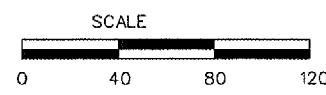
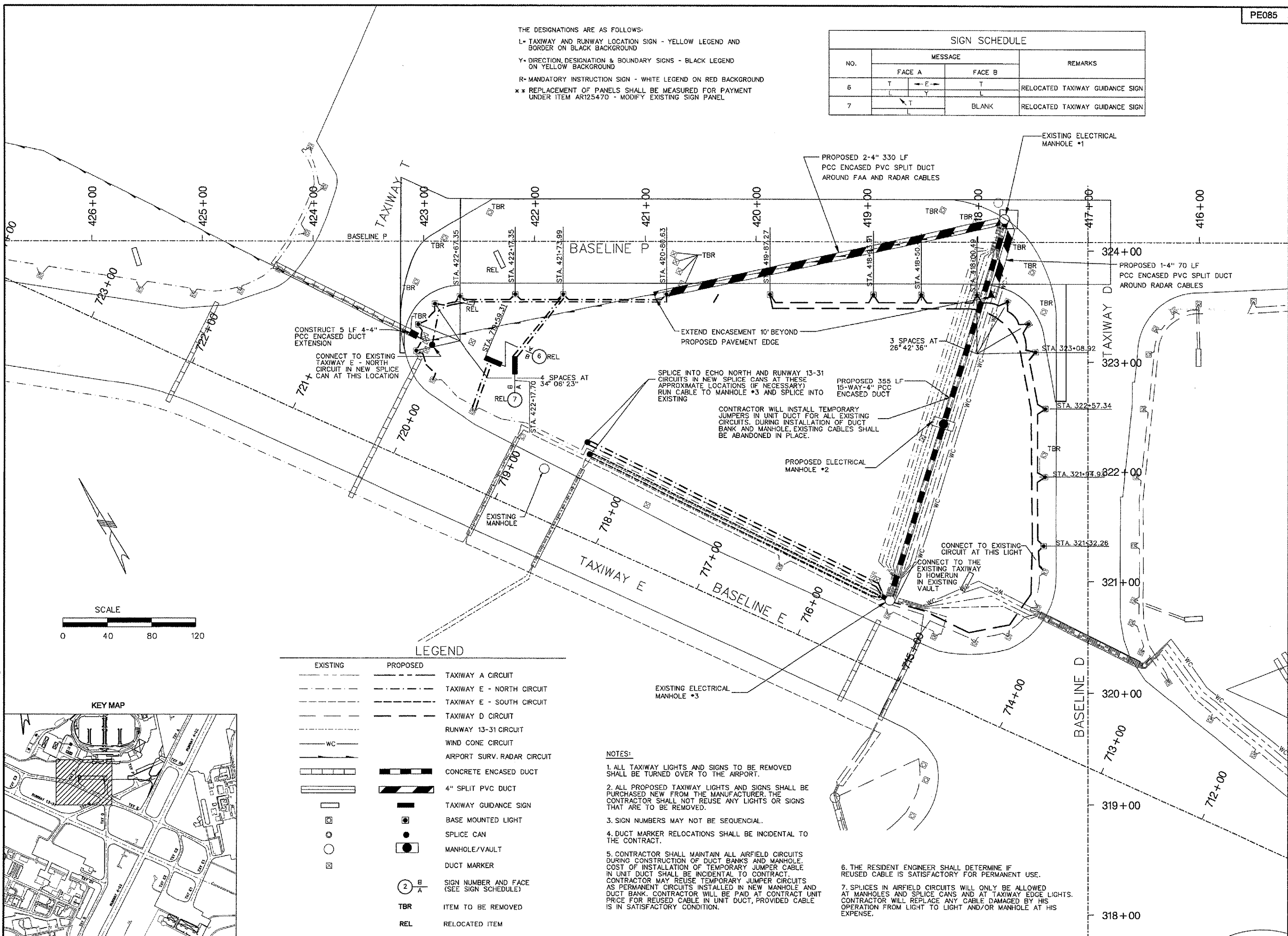


PE085		REVISIONS	
NUMBER	BY	DATE	
0 1 2			
THIS BAR IS EQUAL TO 2" AT FULL SCALE (34X22). PLOT 1			

THE DESIGNATIONS ARE AS FOLLOWS:  
 L- TAXIWAY AND RUNWAY LOCATION SIGN - YELLOW LEGEND AND BORDER ON BLACK BACKGROUND  
 Y- DIRECTION, DESIGNATION & BOUNDARY SIGNS - BLACK LEGEND ON YELLOW BACKGROUND  
 R- MANDATORY INSTRUCTION SIGN - WHITE LEGEND ON RED BACKGROUND  
 \* \* REPLACEMENT OF PANELS SHALL BE MEASURED FOR PAYMENT UNDER ITEM AR125470 - MODIFY EXISTING SIGN PANEL

SIGN SCHEDULE			
NO.	MESSAGE		REMARKS
	FACE A	FACE B	
6	T	T	RELOCATED TAXIWAY GUIDANCE SIGN
	L	L	
7	T	BLANK	RELOCATED TAXIWAY GUIDANCE SIGN
	L	BLANK	



EXISTING	PROPOSED	DESCRIPTION
---	---	TAXIWAY A CIRCUIT
---	---	TAXIWAY E - NORTH CIRCUIT
---	---	TAXIWAY E - SOUTH CIRCUIT
---	---	TAXIWAY D CIRCUIT
---	---	RUNWAY 13-31 CIRCUIT
WC	WC	WIND CONE CIRCUIT
---	---	AIRPORT SURV. RADAR CIRCUIT
---	---	CONCRETE ENCASED DUCT
---	---	4" SPLIT PVC DUCT
---	---	TAXIWAY GUIDANCE SIGN
---	---	BASE MOUNTED LIGHT
---	---	SPLICE CAN
---	---	MANHOLE/VAULT
---	---	DUCT MARKER
---	---	SIGN NUMBER AND FACE (SEE SIGN SCHEDULE)
---	---	ITEM TO BE REMOVED
---	---	RELOCATED ITEM

NOTES:  
 1. ALL TAXIWAY LIGHTS AND SIGNS TO BE REMOVED SHALL BE TURNED OVER TO THE AIRPORT.  
 2. ALL PROPOSED TAXIWAY LIGHTS AND SIGNS SHALL BE PURCHASED NEW FROM THE MANUFACTURER. THE CONTRACTOR SHALL NOT REUSE ANY LIGHTS OR SIGNS THAT ARE TO BE REMOVED.  
 3. SIGN NUMBERS MAY NOT BE SEQUENTIAL.  
 4. DUCT MARKER RELOCATIONS SHALL BE INCIDENTAL TO THE CONTRACT.  
 5. CONTRACTOR SHALL MAINTAIN ALL AIRFIELD CIRCUITS DURING CONSTRUCTION OF DUCT BANKS AND MANHOLE. COST OF INSTALLATION OF TEMPORARY JUMPER CABLE IN UNIT DUCT SHALL BE INCIDENTAL TO CONTRACT. CONTRACTOR MAY REUSE TEMPORARY JUMPER CIRCUITS AS PERMANENT CIRCUITS INSTALLED IN NEW MANHOLE AND DUCT BANK. CONTRACTOR WILL BE PAID AT CONTRACT UNIT PRICE FOR REUSED CABLE IN UNIT DUCT, PROVIDED CABLE IS IN SATISFACTORY CONDITION.  
 6. THE RESIDENT ENGINEER SHALL DETERMINE IF REUSED CABLE IS SATISFACTORY FOR PERMANENT USE.  
 7. SPLICES IN AIRFIELD CIRCUITS WILL ONLY BE ALLOWED AT MANHOLES AND SPLICE CANS AND AT TAXIWAY EDGE LIGHTS. CONTRACTOR WILL REPLACE ANY CABLE DAMAGED BY HIS OPERATION FROM LIGHT TO LIGHT AND/OR MANHOLE AT HIS EXPENSE.

RELOCATE TAXIWAY A AND D FROM MID-FIELD INTERSECTION PHASE 2



IL PROJECT: PIA-3616 AIP PROJ: 3-17-0060-XX
FILE: ...1053_Elec_Layout_Plan_1.dgn
DESIGN BY: BHH
DRAWN BY: CAG
CHECKED BY: TCS
APPROVED BY: CET
DATE: JUNE 30, 2006
JOB No: 04061-03-02
ELECTRICAL LAYOUT PLAN SHEET 1 OF 6
SHEET 53 OF 107 SHEETS

7/13/2006 K:\Peoria\040610302\Draw\Sheets\053\_Elec\_Layout\_Plan\_1.dgn