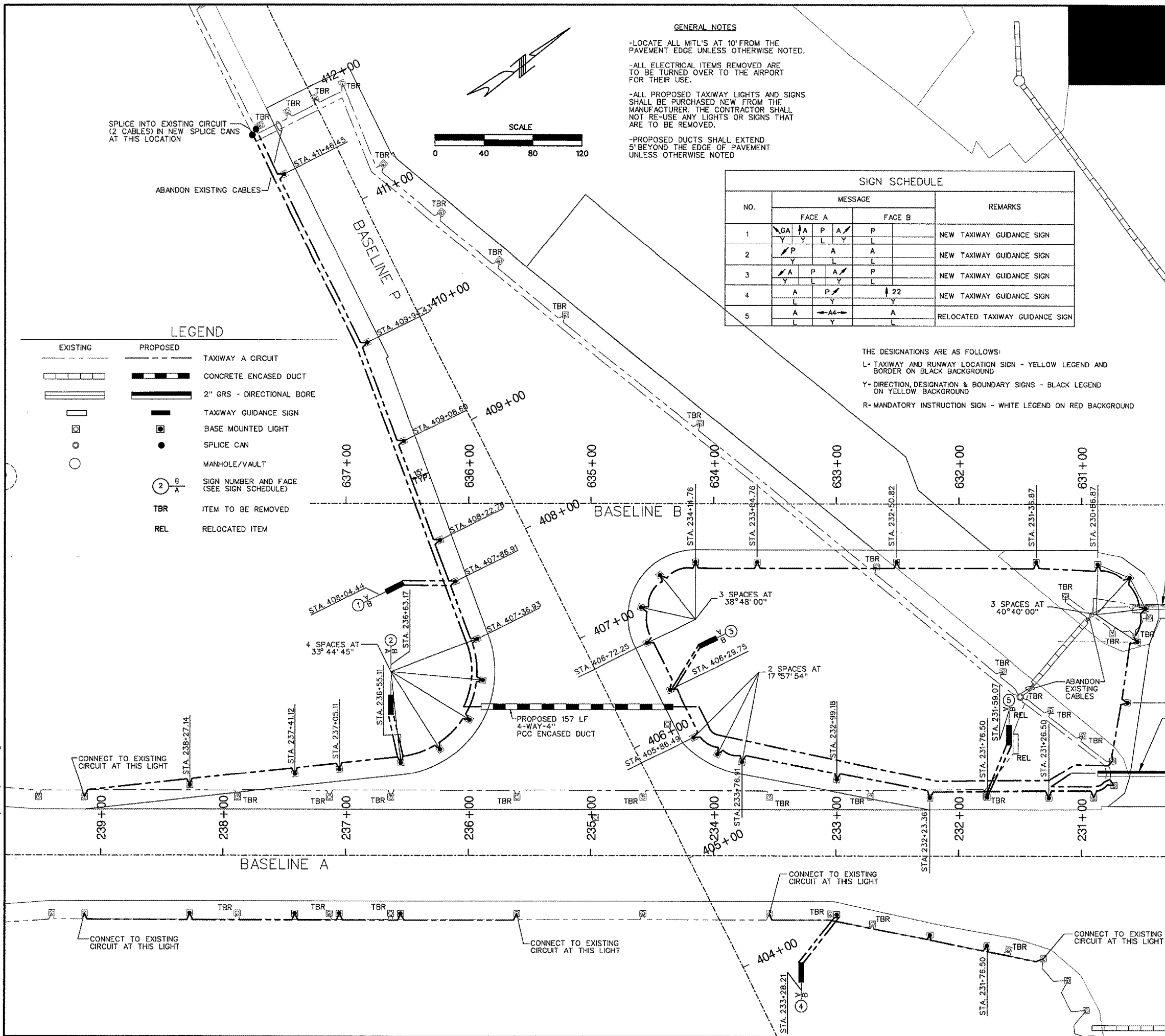


7/13/2006 k:\peoria\040610302\draw\sheets\032\_elec\_layout\_plan\_2.dgn



SPLICE INTO EXISTING CIRCUIT (2 CABLES) IN NEW SPLICE CANS AT THIS LOCATION

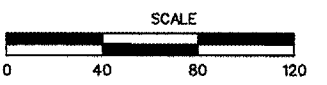
ABANDON EXISTING CABLES

**LEGEND**

- | EXISTING | PROPOSED |  |
|----------|----------|--|
|          |          | TAXIWAY A CIRCUIT                        |
|          |          | CONCRETE ENCASED DUCT                    |
|          |          | 2" GRS - DIRECTIONAL BORE                |
|          |          | TAXIWAY GUIDANCE SIGN                    |
|          |          | BASE MOUNTED LIGHT                       |
|          |          | SPLICE CAN                               |
|          |          | MANHOLE/VAULT                            |
|          |          | SIGN NUMBER AND FACE (SEE SIGN SCHEDULE) |
|          |          | TBR ITEM TO BE REMOVED                   |
|          |          | REL RELOCATED ITEM                       |

**GENERAL NOTES**

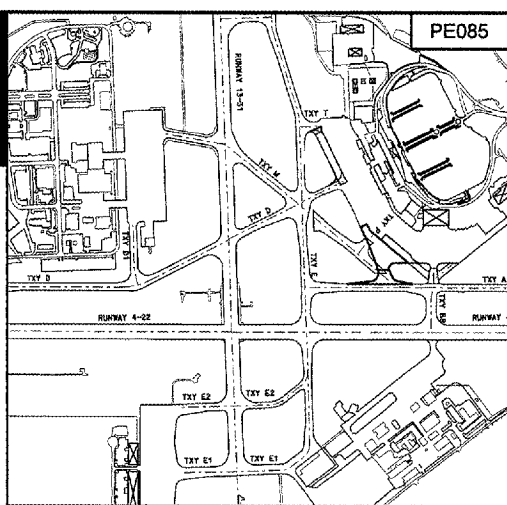
- LOCATE ALL MITL'S AT 10' FROM THE PAVEMENT EDGE UNLESS OTHERWISE NOTED.
- ALL ELECTRICAL ITEMS REMOVED ARE TO BE TURNED OVER TO THE AIRPORT FOR THEIR USE.
- ALL PROPOSED TAXIWAY LIGHTS AND SIGNS SHALL BE PURCHASED NEW FROM THE MANUFACTURER. THE CONTRACTOR SHALL NOT RE-USE ANY LIGHTS OR SIGNS THAT ARE TO BE REMOVED.
- PROPOSED DUCTS SHALL EXTEND 5' BEYOND THE EDGE OF PAVEMENT UNLESS OTHERWISE NOTED



NO.	MESSAGE				REMARKS
	FACE A	FACE B	FACE C	FACE D	
1	GA	A	P	A	NEW TAXIWAY GUIDANCE SIGN
2	P	A	A		NEW TAXIWAY GUIDANCE SIGN
3	A	P	A	P	NEW TAXIWAY GUIDANCE SIGN
4	A	P		22	NEW TAXIWAY GUIDANCE SIGN
5	A				RELOCATED TAXIWAY GUIDANCE SIGN

THE DESIGNATIONS ARE AS FOLLOWS:

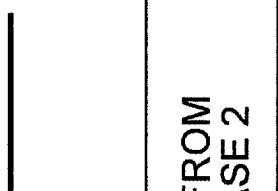
- L- TAXIWAY AND RUNWAY LOCATION SIGN - YELLOW LEGEND AND BORDER ON BLACK BACKGROUND
- Y- DIRECTION, DESIGNATION & BOUNDARY SIGNS - BLACK LEGEND ON YELLOW BACKGROUND
- R- MANDATORY INSTRUCTION SIGN - WHITE LEGEND ON RED BACKGROUND



**KEY MAP**

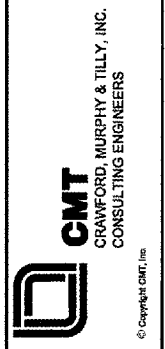


REVISIONS		
NUMBER	BY	DATE



THIS BAR IS EQUAL TO 2' AT FULL SCALE (34X22). PLOT 1

**RELOCATE TAXIWAY A AND D FROM MID-FIELD INTERSECTION PHASE 2**



IL PROJECT: PIA-3616  
AIP PROJ: 3-17-0080-XX

FILE: ...032\_elec\_layout\_plan\_2.dgn

DESIGN BY: BHH

DRAWN BY: CAG

CHECKED BY: TCS

APPROVED BY: CET

DATE: JUNE 30, 2006

JOB No: 04061-03-02

**ELECTRICAL LAYOUT PLAN SHEET 2 OF 6**

SHEET 54 OF 107 SHEETS