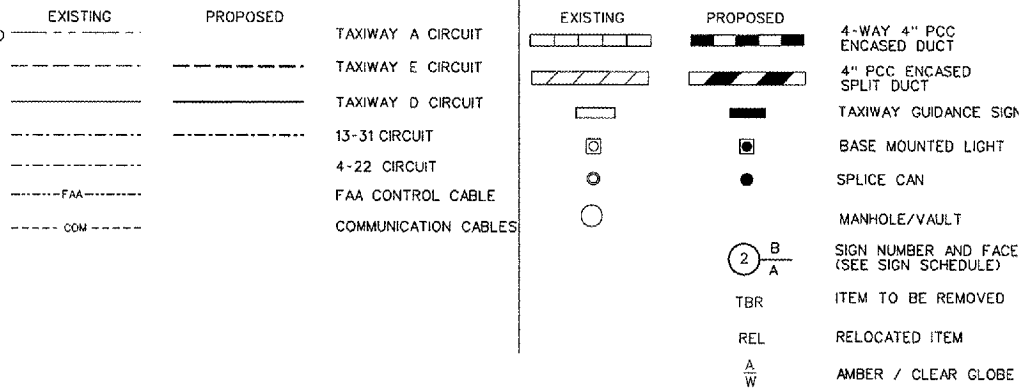


7/13/2006 K:\Peoria\0406103_03\Draw\Sheets\030_Elec_L_Layout_Plan_2A.dgn

SIGN SCHEDULE			
NO.	MESSAGE		REMARKS
	FACE A	FACE B	
8	BLANK	A 13-31 L R	NEW TAXIWAY GUIDANCE SIGN
9	→ A Y	22-4 R	NEW TAXIWAY GUIDANCE SIGN
10	BLANK	→ A Y	NEW TAXIWAY GUIDANCE SIGN
11	A → Y	22-4 R	NEW TAXIWAY GUIDANCE SIGN
12	A 31-13 L R	BLANK	NEW TAXIWAY GUIDANCE SIGN
13	BLANK	A → E → L Y	NEW TAXIWAY GUIDANCE SIGN
14	BLANK	A → Y	NEW TAXIWAY GUIDANCE SIGN
15	E → A → L Y	BLANK	REPLACE PANELS
16	BLANK	E → A → L Y	REPLACE PANELS

THE DESIGNATIONS ARE AS FOLLOWS:
 L - TAXIWAY AND RUNWAY LOCATION SIGN - YELLOW LEGEND AND BORDER ON BLACK BACKGROUND
 Y - DIRECTION, DESIGNATION & BOUNDARY SIGNS - BLACK LEGEND ON YELLOW BACKGROUND
 R - MANDATORY INSTRUCTION SIGN - WHITE LEGEND ON RED BACKGROUND
 ** REPLACEMENT OF PANELS TO BE MEASURED FOR PAYMENT ACCORDING TO ITEM AR125470 - MODIFY EXISTING SIGN PANEL.

LEGEND



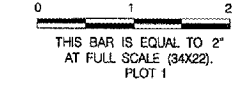
NOTES:

- ALL TAXIWAY LIGHTS AND SIGNS TO BE REMOVED SHALL BE TURNED OVER TO THE AIRPORT.
- ALL PROPOSED TAXIWAY LIGHTS AND SIGNS SHALL BE PURCHASED NEW FROM THE MANUFACTURER. THE CONTRACTOR SHALL NOT REUSE ANY LIGHTS OR SIGNS THAT ARE TO BE REMOVED.
- SIGN NUMBERS MAY NOT BE SEQUENTIAL.
- RELOCATED DISTANCE REMAINING SIGN TO BE MOVED 50' FROM PRESENT LOCATION TO LOCATION SHOWN. CONTRACTOR TO ESTABLISH NEW LOCATION PRIOR TO REMOVING THE EXISTING SIGN AND BASE. EXISTING SIGN TO BE INSTALLED ON NEW BASE AFTER FINAL GRADING IS COMPLETE. CONNECT SIGN TO RWY 13-31 CIRCUIT AT SPLICE CAN FOR NEW IN-PAVEMENT RWY LIGHT.
- SIGNS 9 AND 11 TO BE INSTALLED AT LOCATION OF NEW RUNWAY HOLDLINE MARKING.

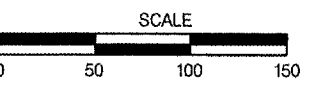
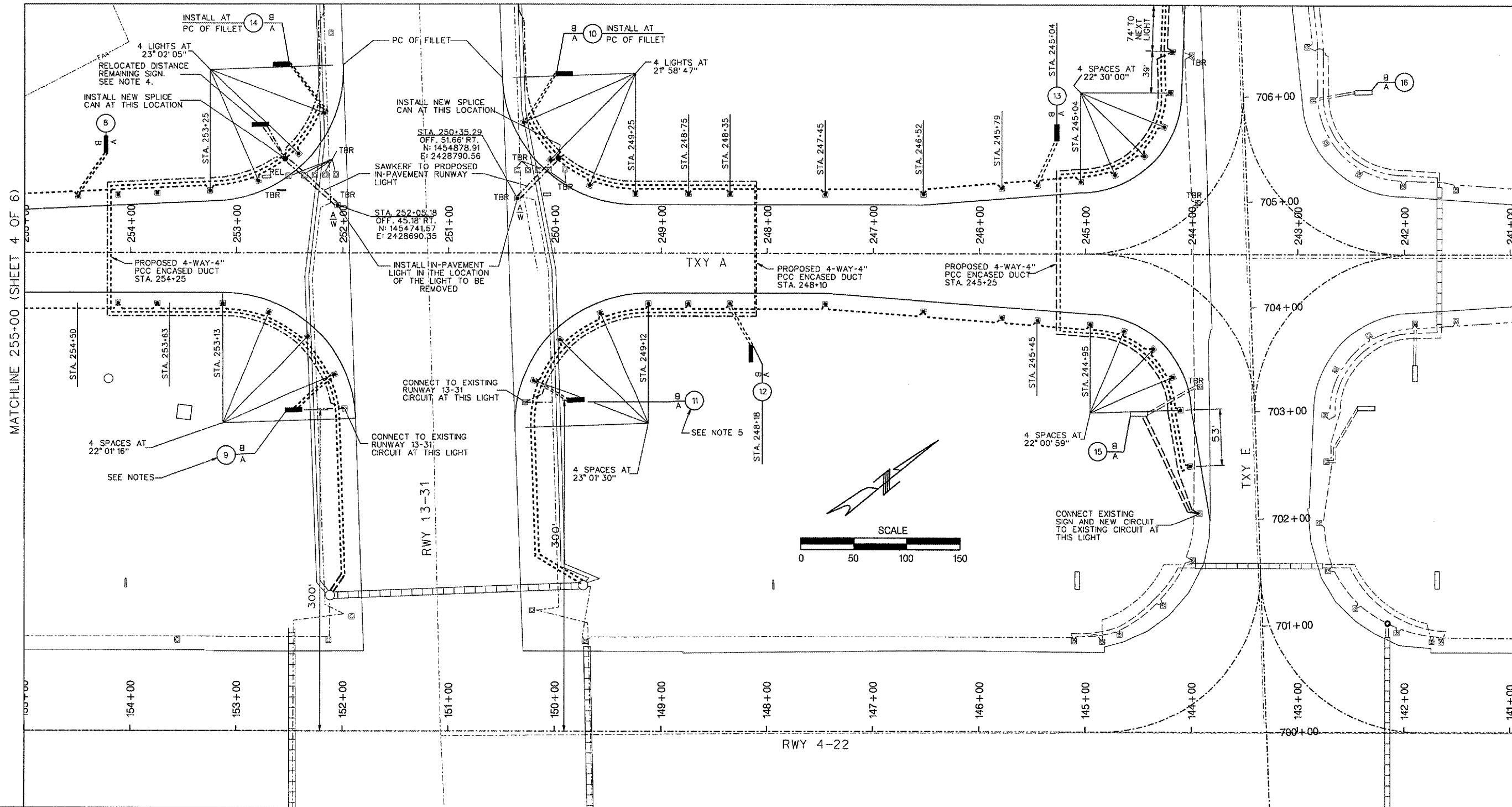
PE085

REVISIONS

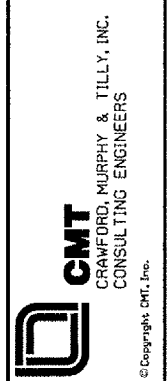
NUMBER	BY	DATE



MATCHLINE 13-31 - (SEE SHEET 6 OF 6)



RELOCATE TAXIWAYS A AND D FROM MID-FIELD INTERSECTION PHASE 2



IL PROJECT: PIA-3616
 AIP PROJ: 3-17-0080-XX

FILE: ...030_Elec_Layout_Plan_2A.dgn

DESIGN BY: TCS
 DRAWN BY: CAG
 CHECKED BY: TCS
 APPROVED BY: CET
 DATE: JUNE 30, 2006
 JOB No: 04061-03-03

ELECTRICAL LAYOUT PLAN
 SHEET 5 OF 6

SHEET 57 OF 116 SHEETS