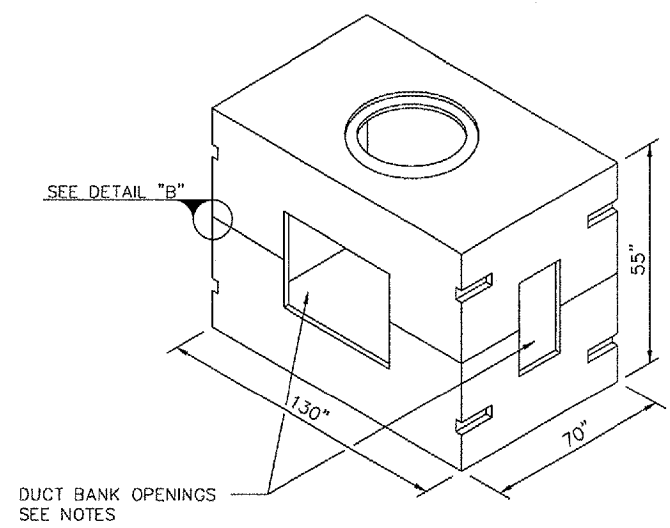
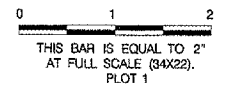


REVISIONS		
NUMBER	BY	DATE

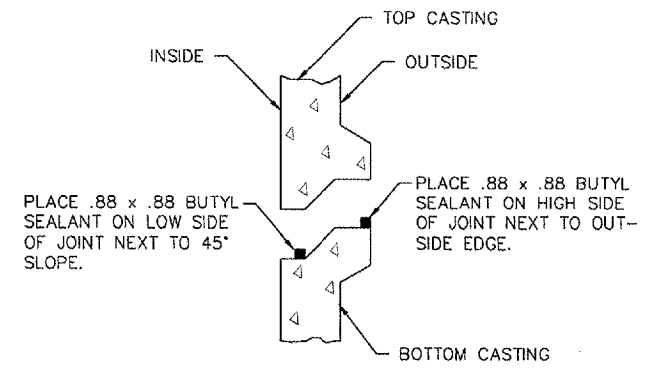


PRECAST 10'x5'x7' MANHOLE
N.T.S.

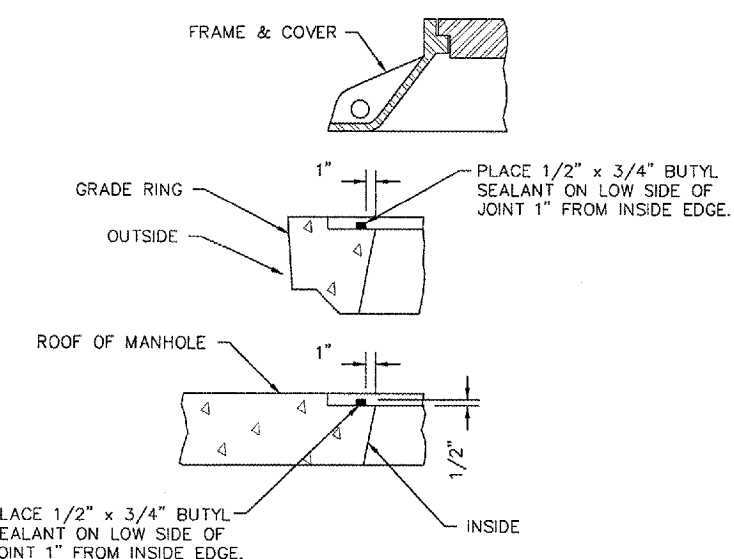
DUCT BANK OPENINGS
SEE NOTES

PRECAST MANHOLE NOTES

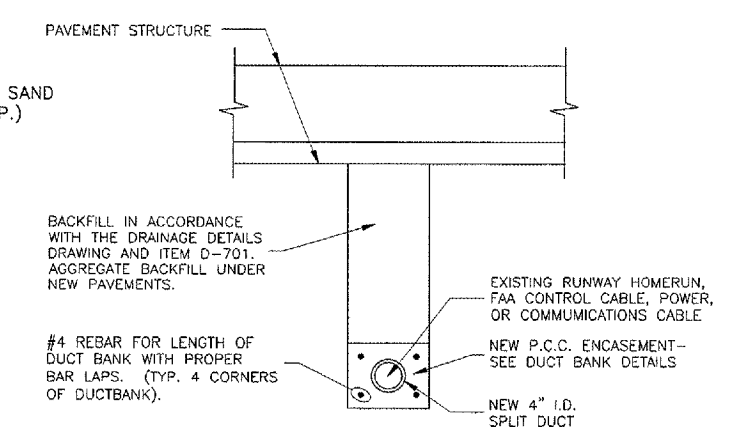
1. THE MANHOLE/GRADE RING/MANHOLE LID ASSEMBLY SHALL BE CONSTRUCTED TO MEET OR EXCEED THE FOLLOWING LOADINGS:
 1.) EARTHLOAD = 2 FT. FILL AT 130 LBS./FT.³
 2.) SURCHARGE = 2 FT. FILL AT 130 LBS./FT.³
 3.) LIVE LOAD = A.A.S.H.T.O. HS-20 TRUCK WITH 20% IMPACT
 4.) $f_c = 4,500$ P.S.I.
 5.) $f_y = 60,000$ P.S.I.
 6.) ULTIMATE STRENGTH DESIGN METHOD
 THE SUPPLIER SHALL PROVIDE CERTIFICATION THAT THE MANHOLES MEET OR EXCEED THESE REQUIREMENTS PRIOR TO INSTALLATION.
2. THE MANHOLE CONSTRUCTION AND INSTALLATION SHALL BE WATERTIGHT. ALL CONSTRUCTION JOINTS AND DUCTS SHALL BE SEALED TO PREVENT WATER ENTRY. ALL UNUSED DUCT BANK OPENINGS IN MANHOLES SHALL BE SEALED WITH METAL PLATES TREATED FOR CORROSION RESISTANCE AND BOLTED INTO PLACE. MATING SURFACES SHALL BE SEALED USING BUTYL SEALANT.
3. THE MANHOLE LID ASSEMBLY SHALL BE INSTALLED SLIGHTLY ABOVE THE SURROUNDING FINAL GRADE AND THE EARTH SHALL BE GRADED UP TO IT.



DETAIL "B"
N.T.S.

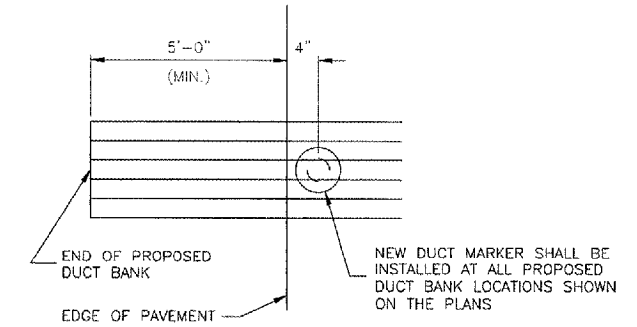


GRADE RING DETAIL
N.T.S.



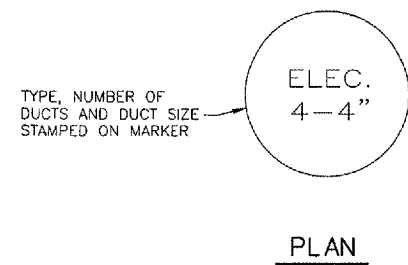
SPLIT DUCT DETAIL
N.T.S.

CONTRACTOR SHALL CUT ANY #6 BARE COPPER WIRE AT EACH END OF THE NEW DUCT AND EXOTHERMICALLY WELD THE WIRE TO A 3/4" DIA. x 10' LONG GROUND ROD. THIS COST SHALL BE INCIDENTAL TO THE SPLIT DUCT INSTALLATION. NOT ALL LOCATIONS MAY HAVE EXISTING GROUND WIRES.

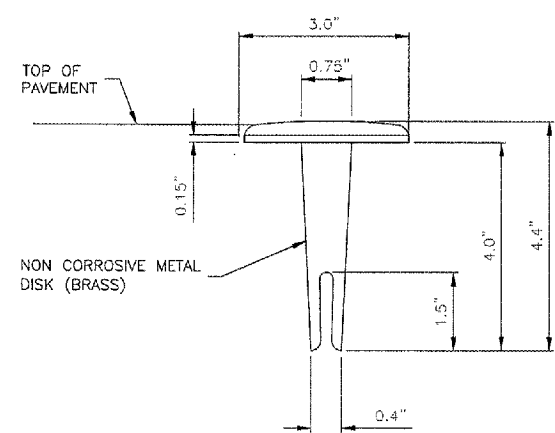


DUCT MARKERS SHALL BE RECESSED AND GROUTED INTO THE PAVEMENTS.

MARKER PLACEMENT
N.T.S.

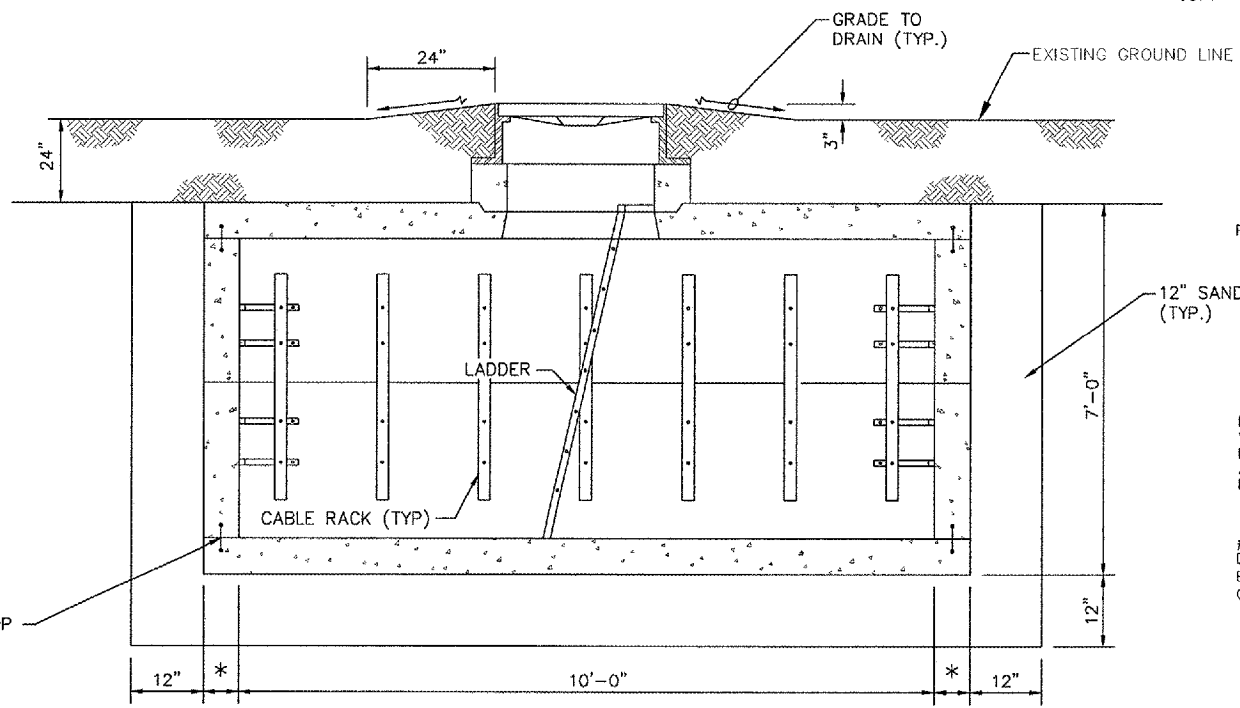


PLAN



SECTION

DUCT MARKER DETAILS
N.T.S.



* = AS REQUIRED FOR LIVE LOAD.

ELEVATION

7/13/2006 K:\Peoria\0406103_03\Draw\Sheets\034_Elect_Details_1.dgn

GREATER Peoria REGIONAL Airport
 RELOCATE TAXWAYS A AND D FROM MID-FIELD INTERSECTION PHASE 2

CMT
 CRAWFORD, MURPHY & TILLY, INC.
 CONSULTING ENGINEERS
 © Copyright CMT, Inc.

IL PROJECT: PIA-3616
AIP PROJ: 3-17-0080-XX

FILE: ...\\Sheets\034_Elect_Details_1.dgn

DESIGN BY: TCS

DRAWN BY: CAG

CHECKED BY: TCS

APPROVED BY: CET

DATE: JUNE 30, 2006

JOB No: 04061-03-03

ELECTRICAL DETAILS
SHEET 2 OF 4

SHEET 64 OF 116 SHEETS