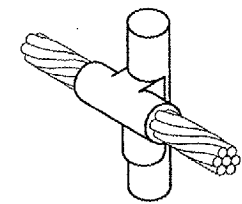
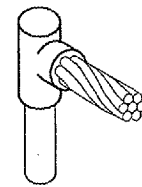


VAULT LEGEND PLATE SCHEDULE	
DEVICE	LABEL
EXISTING POWER PANEL P	PANEL P 480/277 VAC, 3 PH, 4W FED FROM AUTO XFER SWITCH
CONSTANT CURRENT REGULATOR FOR WIND CONES	SUPPLEMENTAL WIND CONES 480V FROM PNL P 120V CONTROL FROM PNL A
CONSTANT CURRENT REGULATOR FOR WIND CONES	MANUAL MODE TO BE 100% FOR WIND CONES
CUTOUT ENCLOSURE FOR WIND CONE CCR	SUPPLEMENTAL WIND CONES
CCR LOAD DISCONNECT CUTOUT INPUT SIDE	INPUT
CCR LOAD DISCONNECT CUTOUT	LOAD DISCONNECT
INTENTIONAL GROUND SWITCH CUTOUT	INTENTIONAL GROUND SWITCH
CUTOUT ENCLOSURE FOR RUNWAY 18 WIND CONE	RWY 18 WIND CONE CUTOUT
CUTOUT ENCLOSURE FOR RUNWAY 36 WIND CONE	RWY 36 WIND CONE CUTOUT
CUTOUT ENCLOSURE FOR RUNWAY 4 WIND CONE	RWY 4 WIND CONE CUTOUT
CUTOUT ENCLOSURE FOR RUNWAY 22 WIND CONE	RWY 22 WIND CONE CUTOUT
CUTOUT ENCLOSURE FOR RUNWAY 13 WIND CONE	RWY 13 WIND CONE CUTOUT
CUTOUT ENCLOSURE FOR RUNWAY 31 WIND CONE	RWY 31 WIND CONE CUTOUT
EACH WIND CONE CUTOUT INPUT SIDE CONNECTION	INPUT
EACH WIND CONE CUTOUT OUTPUT SIDE CONNECTION	OUTPUT
EACH CUTOUT ENCLOSURE	CAUTION OPERATE CUTOUTS WITH CCR SHUT OFF

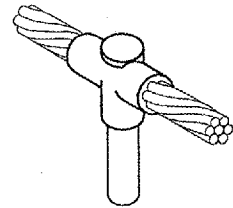
NOTE: LEGEND PLATES SHALL BE WEATHERPROOF ENGRAVED PLASTIC OR PHENOLIC MATERIAL, 1/4" HIGH WHITE LETTERS ON A RED BACKGROUND UNLESS NOTED OTHERWISE. SECURE WITH WEATHERPROOF ADHESIVE AND MACHINE SCREWS. FURNISH ADDITIONAL LEGEND PLATES WHERE REQUIRED BY CODE, FOR ADDITIONAL EQUIPMENT, AS DETAILED HEREIN ON THE PLANS, AND AS NOTED IN THE SPECIAL PROVISION SPECIFICATIONS.



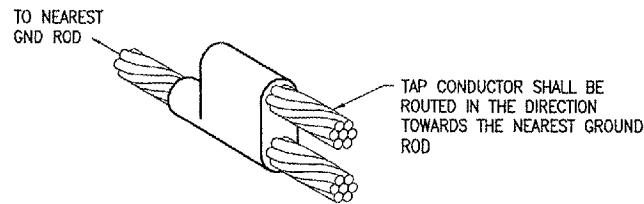
CABLE TO GROUND ROD



CABLE TO GROUND ROD



CABLE TO GROUND ROD

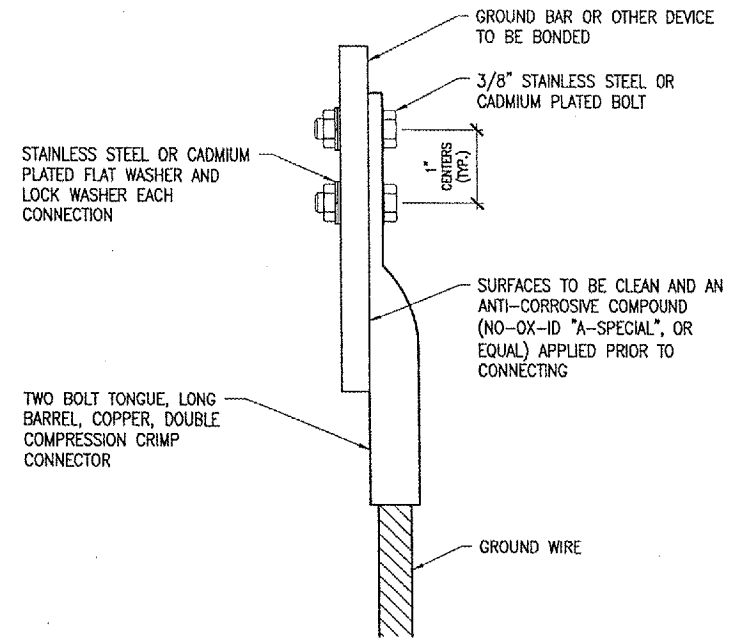


CABLE TO CABLE HORIZONTAL PARALLEL TAP

DETAIL NOTES

- EXOTHERMIC WELDS SHALL BE CADWELD AS MANUFACTURED BY ERICO PRODUCTS, SOLON, OHIO OR THERMOWELD AS MANUFACTURED BY CONTINENTAL INDUSTRIES, TULSA, OKLAHOMA. VERIFY PROPER SIZES, TYPES, AND REQUIREMENTS FOR THE RESPECTIVE APPLICATION WITH THE MANUFACTURER, AND INSTALL PER THEIR DIRECTIONS.
- FOR APPLICATIONS TO METAL SURFACES THAT ARE LESS THAN 3/16" THICK CONTACT THE EXOTHERMIC WELD MANUFACTURER FOR DIRECTION AND INSTRUCTION ON EXOTHERMIC WELD INSTALLATION TO THE RESPECTIVE SURFACE.
- FOR APPLICATIONS TO GALVANIZED STEEL OR PAINTED STEEL, REMOVE GALVANIZING AND/OR PAINT & CLEAN THE SURFACE TO EXPOSE BARE STEEL BEFORE MAKING EXOTHERMIC WELD CONNECTION.
- INDIVIDUAL GROUNDING ELECTRODE CONDUCTORS SHALL NOT BE INSTALLED IN METAL CONDUIT. INSTALL GROUNDING ELECTRODE CONDUCTORS IN SCHED 40 PVC CONDUIT AS REQUIRED IN FOUNDATIONS, FOR PROTECTION, WHERE ENTERING ENCLOSURES, ETC.

EXOTHERMIC WELD DETAILS



WIRE SIZE	BURNDY CAT. NO.	THOMAS & BETTS CAT. NO.
#6 AWG STRANDED	YA6C-2TC38	256-30695-1158
#4 AWG STRANDED	YA4C-2TC38	256-30695-1159
#2 AWG STRANDED	YA2C-2TC38	256-30695-1160
#2 AWG SOLID	YA3C-2TC38	256-30695-1160
#1/0 AWG STRANDED	YA25-2TC38	256-30695-1162
#2/0 AWG STRANDED	YA26-2TC38	256-30695-1116
#3/0 AWG STRANDED	YA27-2TC38	548168E

NOTES

- ALL CONNECTIONS TO GROUND BUS BAR SHALL BE WITH 2 HOLE TONGUE LONG BARREL COMPRESSION LUGS BOLTED TO THE BUS BAR.
- GROUND WIRE CONNECTIONS TO EQUIPMENT SHALL BE WITH 2 HOLE TONGUE LONG BARREL COMPRESSION LUGS BOLTED TO THE DEVICE OR WITH THE RESPECTIVE EQUIPT MANUFACTURER'S LUG OR TERMINAL WHERE APPLICABLE.
- GROUNDING ELECTRODE CONDUCTORS, BONDING JUMPERS, & INDIVIDUAL GROUND WIRES SHALL NOT BE INSTALLED IN METAL CONDUIT.
- ALL CONNECTIONS SHALL BE COATED WITH A CORROSION PREVENTATIVE COMPOUND (SANCHEM INC. NO-OX-ID "A-SPECIAL", BURNDY PENETROX E, OR EQUAL) BEFORE JOINING. ALL COPPER BUS BARS SHALL BE CLEANED PRIOR TO MAKING CONNECTIONS TO REMOVE SURFACE OXIDATION. CLEAN SURFACES, OF RESPECTIVE DEVICES TO BE BONDED, TO BARE METAL, PER NEC 250-12.

GROUNDING LUG CONNECTION DETAIL

QUINCY REGIONAL AIRPORT
BALDWIN FIELD
ADAMS COUNTY, ILLINOIS

QUINCY Regional Airport
BALDWIN FIELD

IL PROJ.: UIN-3618 A.I.P. PROJ.: 3-17-0085-XX

REL Project No.	924-085WCD_0240
Element	E-604.DWG
Scale	NONE
Date	05/19/06
LAYOUT	KNL 05/17/06
DRAWN	MV 05/17/06
REVIEWED	CAH 05/18/06

HANSON

Hanson Professional Services, Inc.
1525 South Sixth Street
Springfield, Illinois 62705-2886
Offices Nationwide

INSTALL WIND CONES
LEGEND PLATE SCHEDULE
AND GROUNDING DETAILS