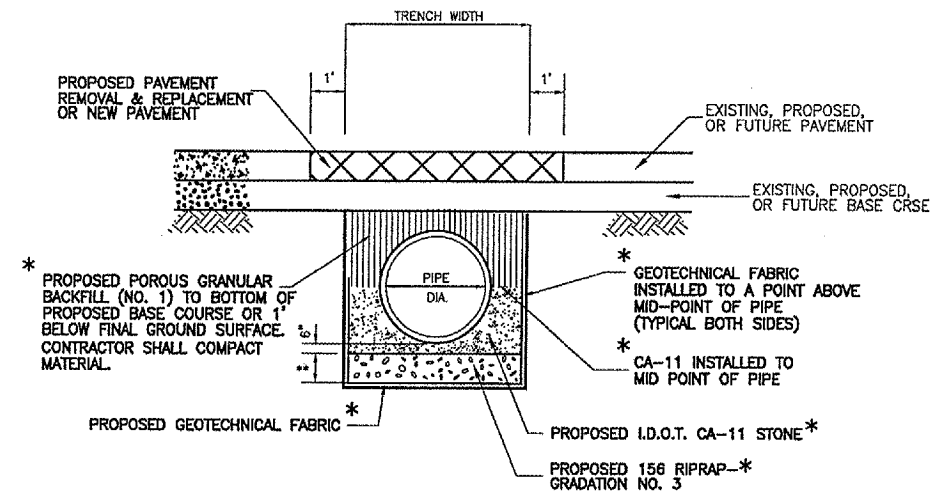


PROPOSED TYPICAL SECTION - PIPE TRENCH
 (ALL PROPOSED PIPES)

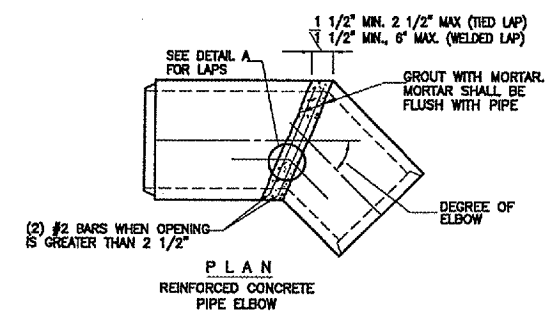
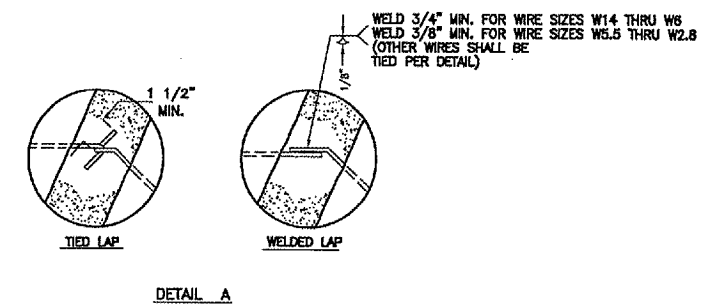
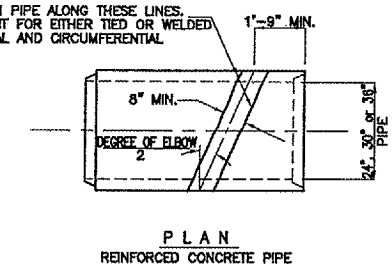
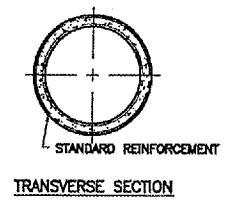


* = COST OF THESE ITEMS SHALL BE INCLUDED IN THE 701 PIPE CONTRACT UNIT PRICES

GENERAL PIPE NOTES:

- GROUND WATER IS EXPECTED. CONTRACTOR SHALL BE RESPONSIBLE FOR ALL DEWATERING, TO THE SATISFACTION OF THE ENGINEER, TO INSURE PROPER INSTALLATION OF PIPES. NO ADDITIONAL COMPENSATION BEYOND THE CONTRACT UNIT PRICES WILL BE ALLOWED FOR DEWATERING COSTS.
- COMPACTED BEDDING AND BACKFILL MATERIALS SHALL BE REQUIRED AS SHOWN IN DETAIL. SEE SPECIAL PROVISIONS FOR ADDITIONAL INFORMATION.

PIPE DIA.	TRENCH WIDTH	PVMT. FMT. WIDTH	FOUNDATION DEPTH
6"	3.58'	6'	8"
12"	4.17'	6.5'	8"
18"	4.75'	7'	8"
ELLIPTICAL 18" EQUIV	5.25'	7.5'	8"
24"	5.33'	7.5'	8"



REINFORCED CONCRETE PIPE ELBOW

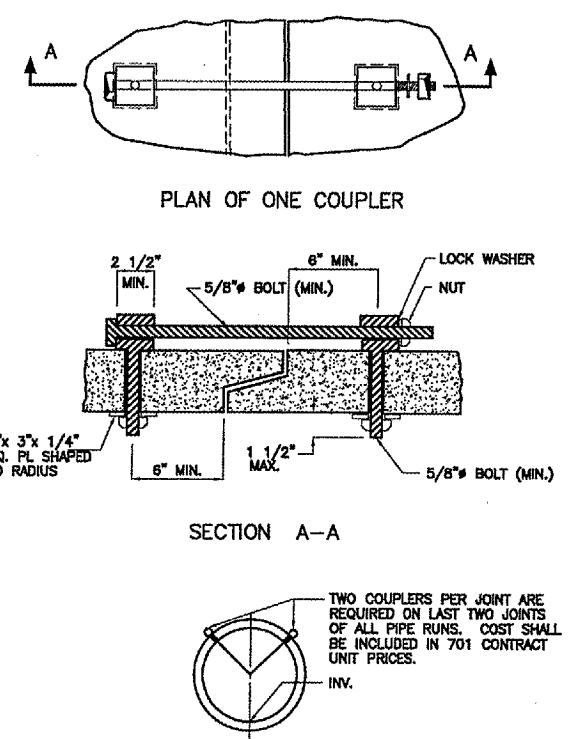
NOTES:

REINFORCED CONCRETE PIPE SHALL CONFORM TO AASHTO M-170
 ADDITIONAL REINFORCEMENT SHALL CONFORM TO AASHTO M-31 or M-53
 DEGREE OF ELBOW AND PIPE SIZE REQUIRED SHALL BE AS INDICATED ON DETAIL PLAN FOR EACH INDIVIDUAL INSTALLATION.
 CEMENT MORTAR WITH BONDING AGENT SHALL BE APPROVED BY THE ENGINEER.
 BASIS OF PAYMENT - REINFORCED CONCRETE PIPE ELBOW SHALL BE PAID FOR AT THE CONTRACT UNIT PRICE "EACH" COMPLETE IN PLACE FOR THE PIPE SIZE SPECIFIED. THE SECTION OF PIPE WHICH INCLUDES THE ELBOW WILL NOT BE INCLUDED IN THE LINEAL FOOT MEASUREMENT OF THE PIPE RUN IN WHICH IT IS INCLUDED.
 GRANULAR BACKFILL, BEDDING MATERIALS, AND GEOTECH FABRIC PER 701 PIPE SPECIFICATIONS IN SPECIAL PROVISIONS SHALL BE INCLUDED IN CONTRACT UNIT PRICE.

MODIFIED I.D.O.T. STANDARD 542601

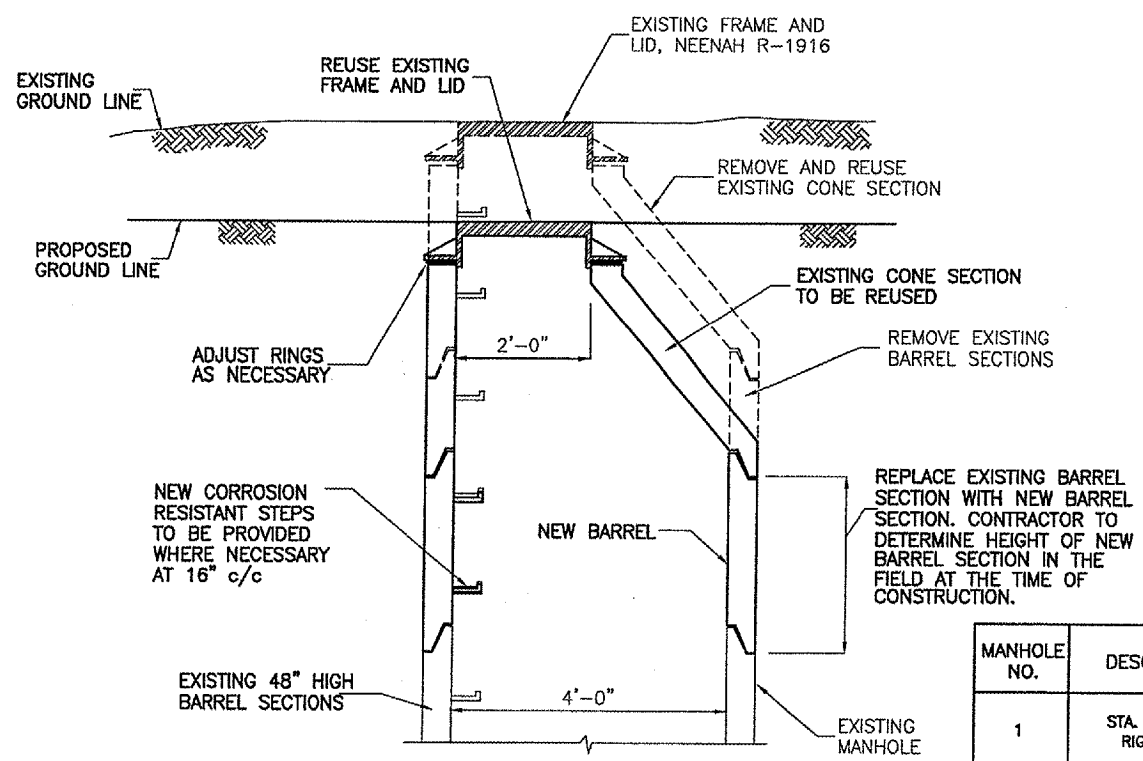
ITEM AR752850

PROPOSED PIPE COUPLERS



TWO COUPLERS PER JOINT ARE REQUIRED ON LAST TWO JOINTS OF ALL PIPE RUNS. COST SHALL BE INCLUDED IN 701 CONTRACT UNIT PRICES.

RECONSTRUCT EXISTING SANITARY SEWER MANHOLE
 TXWY. K, STA. 381+59.5, RIGHT 96.5'
 ITEM AR751983



GENERAL NOTES

- CONTRACTOR SHALL FIELD VERIFY MEASUREMENTS AND SUPPLY ALL LABOR AND MATERIALS REQUIRED TO RECONSTRUCT MANHOLE TO THE ELEVATION SHOWN BELOW.
- REUSE EXISTING MANHOLE FRAME AND LID. SUPPLY NEW GASKET SEAL AND STAINLESS STEEL BOLTS FOR EXTG. FRAME AND LID. THIS WILL NOT BE PAID FOR SEPARATELY BUT SHALL BE INCLUDED IN THE UNIT PRICE FOR RECONSTRUCT MANHOLE.
- BOLT HOLES SHALL BE CLEANED FREE OF RUST AND LID BOLTED DOWN WATER TIGHT. COST TO BE INCLUDED IN RECONSTRUCT MANHOLE UNIT PRICE.
- ALL MATERIALS REMOVED AND NOT REUSED WILL BECOME THE PROPERTY OF THE METROPOLITAN AIRPORT AUTHORITY AND SHALL BE HAULED TO THE OLD LAKE AREA AS DIRECTED BY THE ENGINEER.
- ALL WORK DESCRIBED IN THIS DETAIL WILL NOT BE PAID FOR SEPARATELY BUT SHALL BE INCLUDED IN THE CONTRACT PRICE FOR RECONSTRUCT MANHOLE.

MANHOLE NO.	DESCRIPTION	EXISTING FL ELEV.	EXISTING LID ELEV.	PROPOSED LID ELEV.	REMARKS
1	STA. 381+59.5, RIGHT 96.5'	558.19±	575.20±	573.85±*	REUSE EXTG. FRAME & LID

* = MATCH PROPOSED GROUND

G:\AIRPORT\A05T031\DRAINAGE3.DWG, 6/27/2006 1:49:06 PM, jefrm