

MCCLURE CONTROL POINTS:

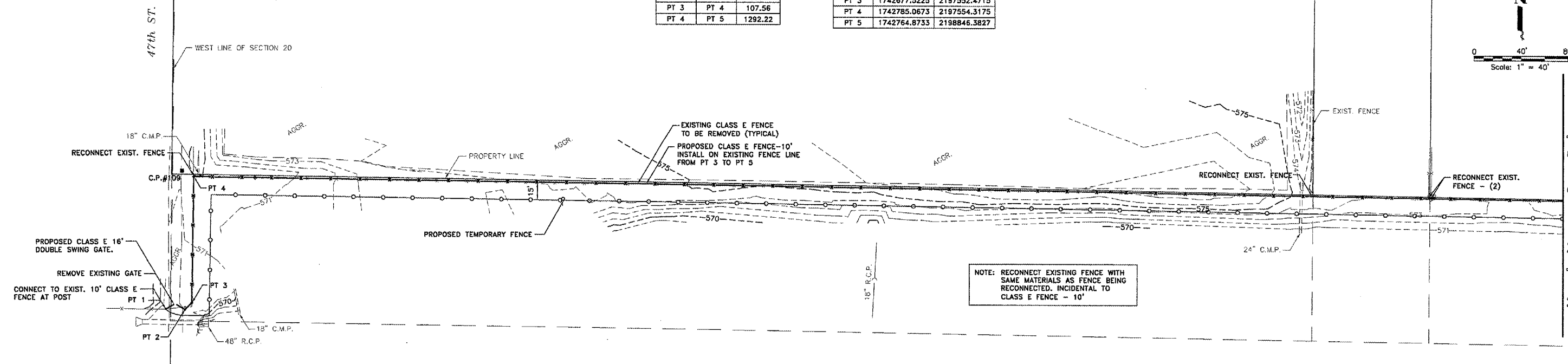
C.P. #109: N 1742790.0230 E 2197544.2410 ELEV - 570.88
 C.P. #116: N 1742758.4370 E 2199497.5502 ELEV - 590.50

QU097

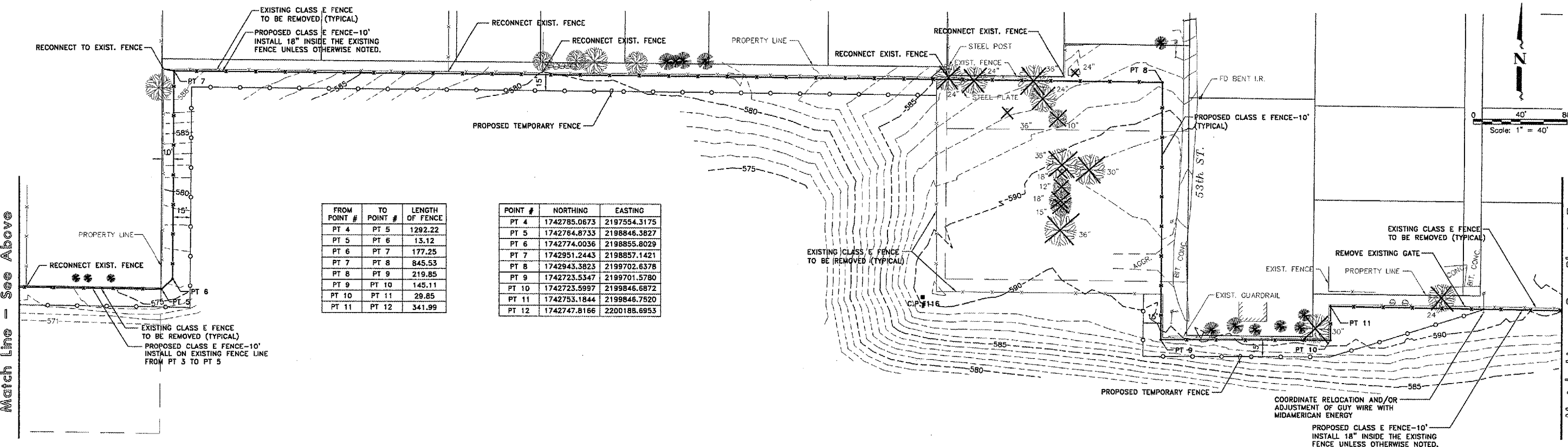
| FROM POINT # | TO POINT # | LENGTH OF FENCE |
|--------------|------------|-----------------|
| PT 1 | PT 2 | 16' GATE |
| PT 2 | PT 3 | 8.27 |
| PT 3 | PT 4 | 107.56 |
| PT 4 | PT 5 | 1292.22 |

| POINT # | NORTHING | EASTING |
|---------|--------------|--------------|
| PT 1 | 1742672.0537 | 2197530.1940 |
| PT 2 | 1742671.7734 | 2197546.5216 |
| PT 3 | 1742677.5225 | 2197552.4715 |
| PT 4 | 1742785.0673 | 2197554.3175 |
| PT 5 | 1742764.8733 | 2198846.3827 |

0 40' 80'
 Scale: 1" = 40'



Match Line - See Below



Match Line - See Above

Match Line - See Sheet 5

| FROM POINT # | TO POINT # | LENGTH OF FENCE |
|--------------|------------|-----------------|
| PT 4 | PT 5 | 1292.22 |
| PT 5 | PT 6 | 13.12 |
| PT 6 | PT 7 | 177.25 |
| PT 7 | PT 8 | 845.53 |
| PT 8 | PT 9 | 219.85 |
| PT 9 | PT 10 | 145.11 |
| PT 10 | PT 11 | 29.85 |
| PT 11 | PT 12 | 341.99 |

| POINT # | NORTHING | EASTING |
|---------|--------------|--------------|
| PT 4 | 1742785.0673 | 2197554.3175 |
| PT 5 | 1742764.8733 | 2198846.3827 |
| PT 6 | 1742774.0036 | 2198855.8029 |
| PT 7 | 1742951.2443 | 2198857.1421 |
| PT 8 | 1742943.3823 | 2199702.6378 |
| PT 9 | 1742723.5347 | 2199701.5780 |
| PT 10 | 1742723.5997 | 2199846.6872 |
| PT 11 | 1742753.1844 | 2199846.7520 |
| PT 12 | 1742747.8166 | 2200188.6953 |

QUAD CITY INTERNATIONAL AIRPORT
 Moline, IL



| REVISIONS | | |
|-----------|------|------|
| NO. | ITEM | DATE |
| | | |
| | | |

PLOTTING SCALE: 1" = 40'
 DRAWN BY: SPK
 CHECKED BY:
 DATE: MARCH 2006

McCLURE ENGINEERING ASSOCIATES, INC.
 4700 Kennedy Drive
 (309) 792-9350
 East Moline, Illinois 61244
 FAX (309) 792-8874
 Design Firm License #104-000816
 Copyright 2006 by McClure Engineering Associates, Inc.

GENERAL CONSTRUCTION PLAN
 QUAD CITY INTERNATIONAL AIRPORT
 SECURITY FENCE - PHASE III
 Moline, Illinois
 FILE NAME: T:\M0106.DWG\060808MOL.DWG(C01)
 JOB NUMBER: 01-29-06-008

SHEET NO.
4
 OF 17