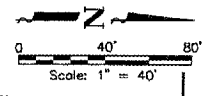


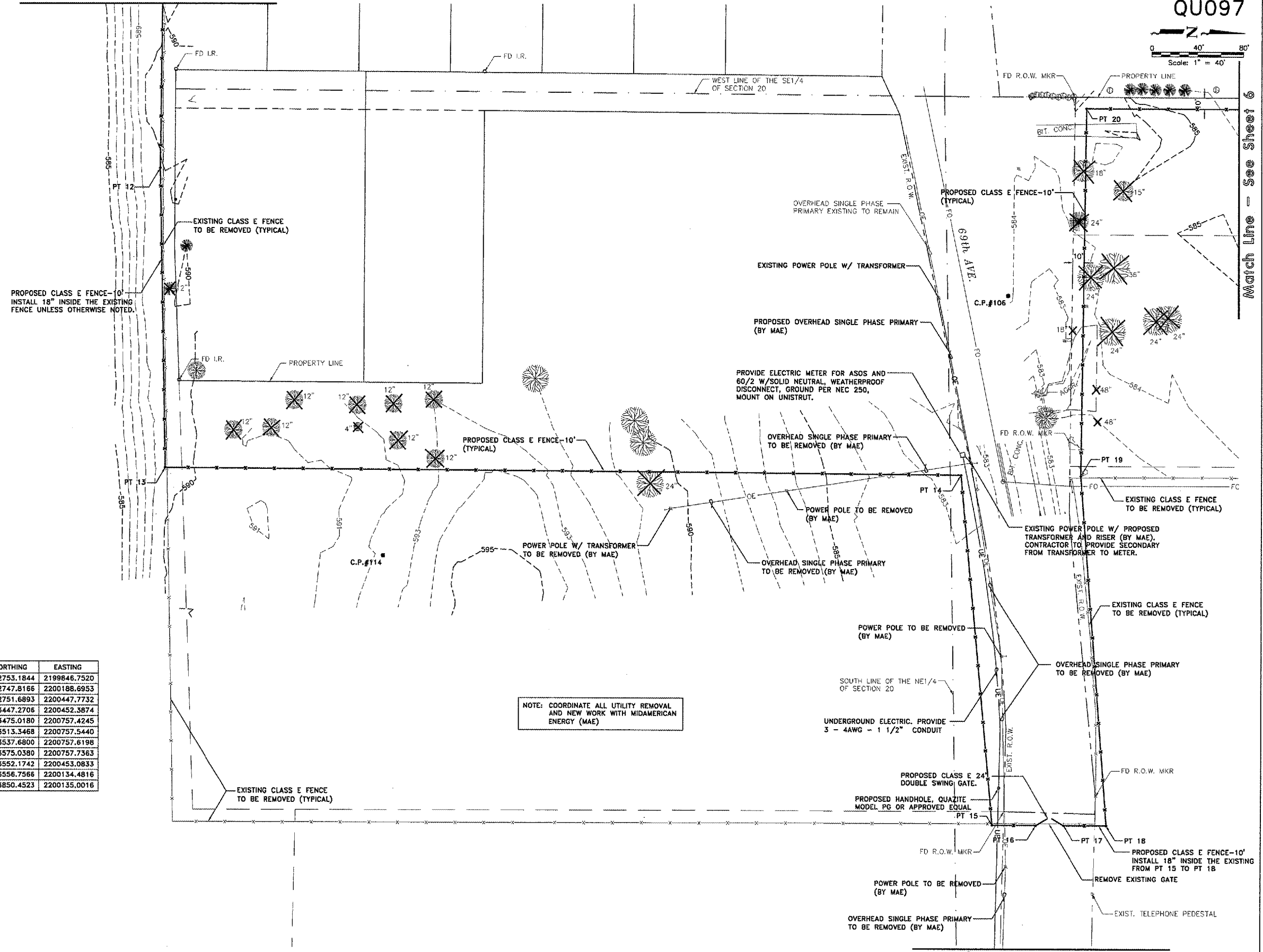
MCCLURE CONTROL POINTS:  
 C.P. #106: N 1743488.2438 E 2200297.8618 ELEV - 584.27  
 C.P. #114: N 1742942.3336 E 2200523.2358 ELEV - 592.23

Match Line - See Sheet 4

QU097



Match Line - See Sheet 6



FROM POINT #	TO POINT #	LENGTH OF FENCE
PT 11	PT 12	341.99
PT 12	PT 13	259.11
PT 13	PT 14	695.60
PT 14	PT 15	306.30
PT 15	PT 16	38.33
PT 16	PT 17	24' GATE
PT 17	PT 18	37.36
PT 18	PT 19	305.51
PT 19	PT 20	318.63
PT 20	PT 21	293.70

POINT #	NORTHING	EASTING
PT 11	1742753.1844	2199846.7520
PT 12	1742747.8166	2200188.6953
PT 13	1742751.6893	2200447.7732
PT 14	1743447.2706	2200452.3874
PT 15	1743475.0180	2200757.4245
PT 16	1743513.3468	2200757.5440
PT 17	1743537.6800	2200757.6198
PT 18	1743575.0380	2200757.7363
PT 19	1743552.1742	2200453.0833
PT 20	1743556.7566	2200134.4816
PT 21	1743850.4523	2200135.0016

NOTE: COORDINATE ALL UTILITY REMOVAL AND NEW WORK WITH MIDAMERICAN ENERGY (MAE)

Match Line - See Sheet 15

QUAD CITY INTERNATIONAL AIRPORT  
 Moline, IL



REVISIONS		
NO.	ITEM	DATE

PLOTTING SCALE: 1" = 40'  
 DRAWN BY: SPW  
 CHECKED BY:  
 DATE: MARCH 2006

**McCLURE ENGINEERING ASSOCIATES, INC.**  
 4700 Kennedy Drive East Moline, Illinois 61224  
 (309) 792-5350 FAX (309) 792-5374  
Design Firm License: Illinois #184-000616 Copyright 2006 by McClure Engineering Associates, Inc.

**GENERAL CONSTRUCTION PLAN**  
 QUAD CITY INTERNATIONAL AIRPORT  
 SECURITY FENCE - PHASE III  
 MOLINE, ILLINOIS  
 FILE NAME: T:\M0106.008\DWG\06008MDL.DWG(C02)  
 JOB NUMBER: 01-29-06-008

SHEET NO.  
**5**  
 OF 17