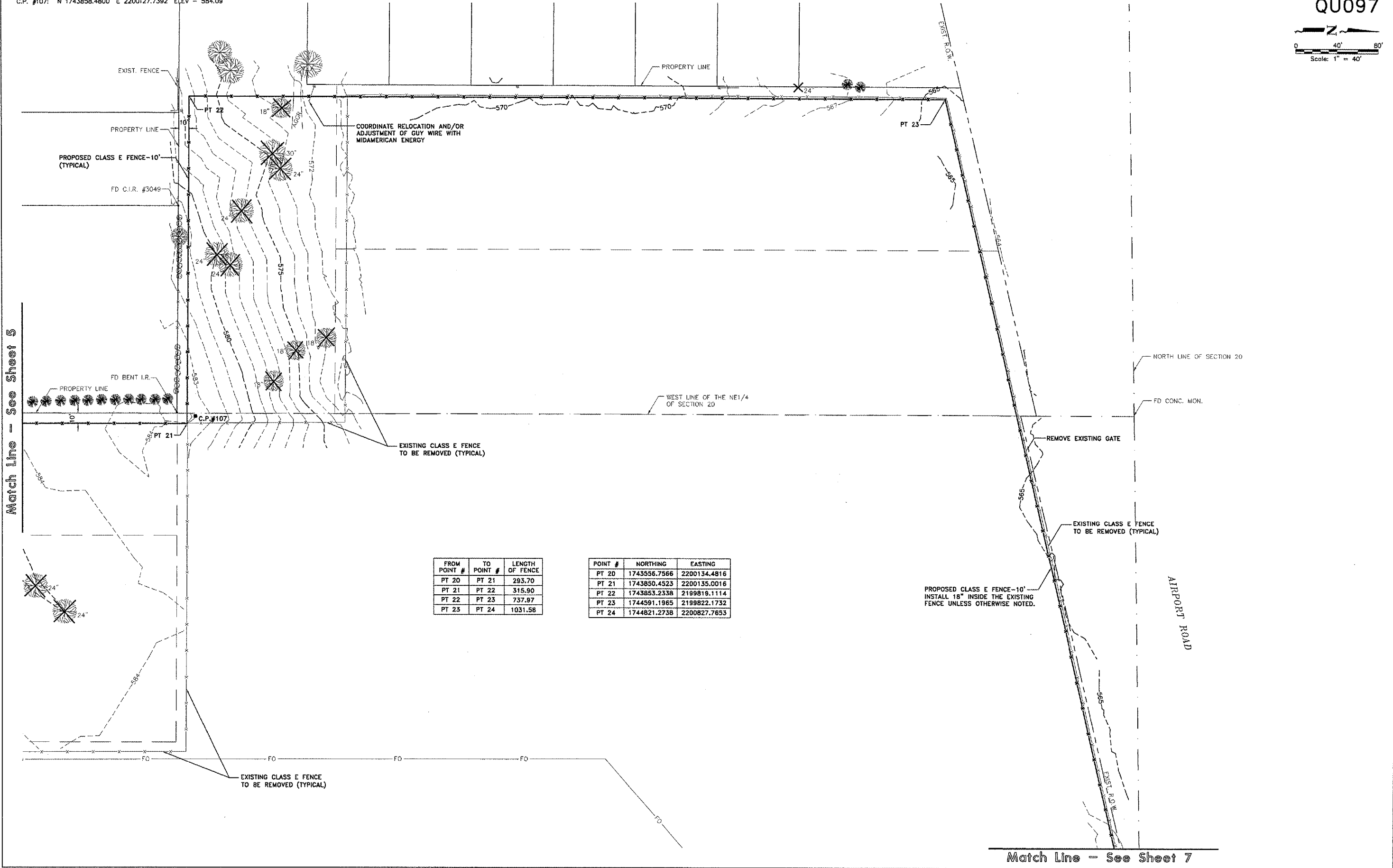
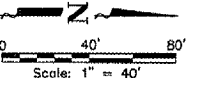


McCLURE CONTROL POINTS:
 C.P. #107: N 1743858.4800 E 2200127.7392 ELEV - 584.09

QU097



FROM POINT #	TO POINT #	LENGTH OF FENCE
PT 20	PT 21	293.70
PT 21	PT 22	315.90
PT 22	PT 23	737.97
PT 23	PT 24	1031.58

POINT #	NORTHING	EASTING
PT 20	1743556.7566	2200134.4816
PT 21	1743850.4523	2200135.0016
PT 22	1743853.2338	2199819.1114
PT 23	1744591.1965	2199822.1732
PT 24	1744821.2738	2200827.7653

PROPOSED CLASS E FENCE-10'
 INSTALL 18" INSIDE THE EXISTING
 FENCE UNLESS OTHERWISE NOTED.

QUAD CITY INTERNATIONAL AIRPORT
 Moline, IL



REVISIONS		
NO.	ITEM	DATE

PLOTTING SCALE: 1" = 40'
 DRAWN BY: SPW
 CHECKED BY:
 DATE: MARCH 2006

McCLURE ENGINEERING ASSOCIATES, INC.
 4700 Kennedy Drive
 (309) 792-8350
 East Moline, Illinois 61724
 FAX (309) 792-8874
Design Firm License: Illinois #184-000816
 Copyright 2006 by McClure Engineering Associates, Inc.

GENERAL CONSTRUCTION PLAN
 QUAD CITY INTERNATIONAL AIRPORT
 SECURITY FENCE - PHASE III
 Moline, Illinois
 FILE NAME: J:\MOT06.008\DWG\06000MCL.DWG\CO3
 JOB NUMBER: 01-29-06-008

SHEET NO.
6
 OF 17