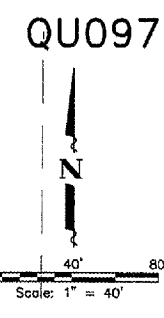


MCCLURE CONTROL POINTS:

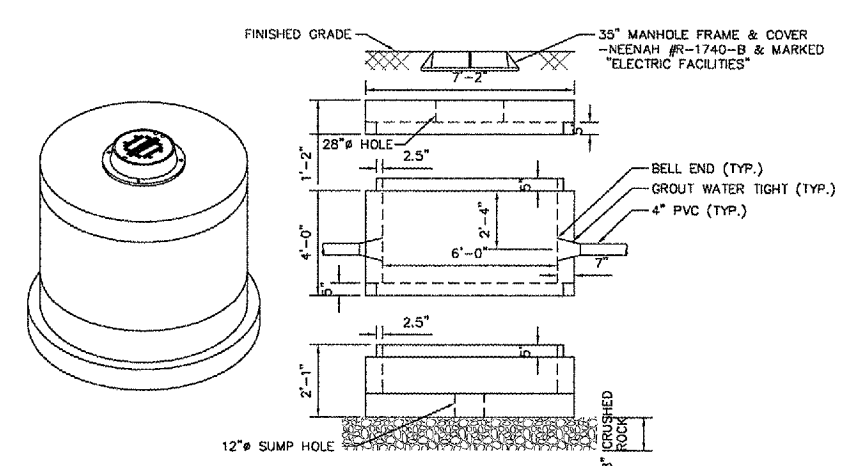
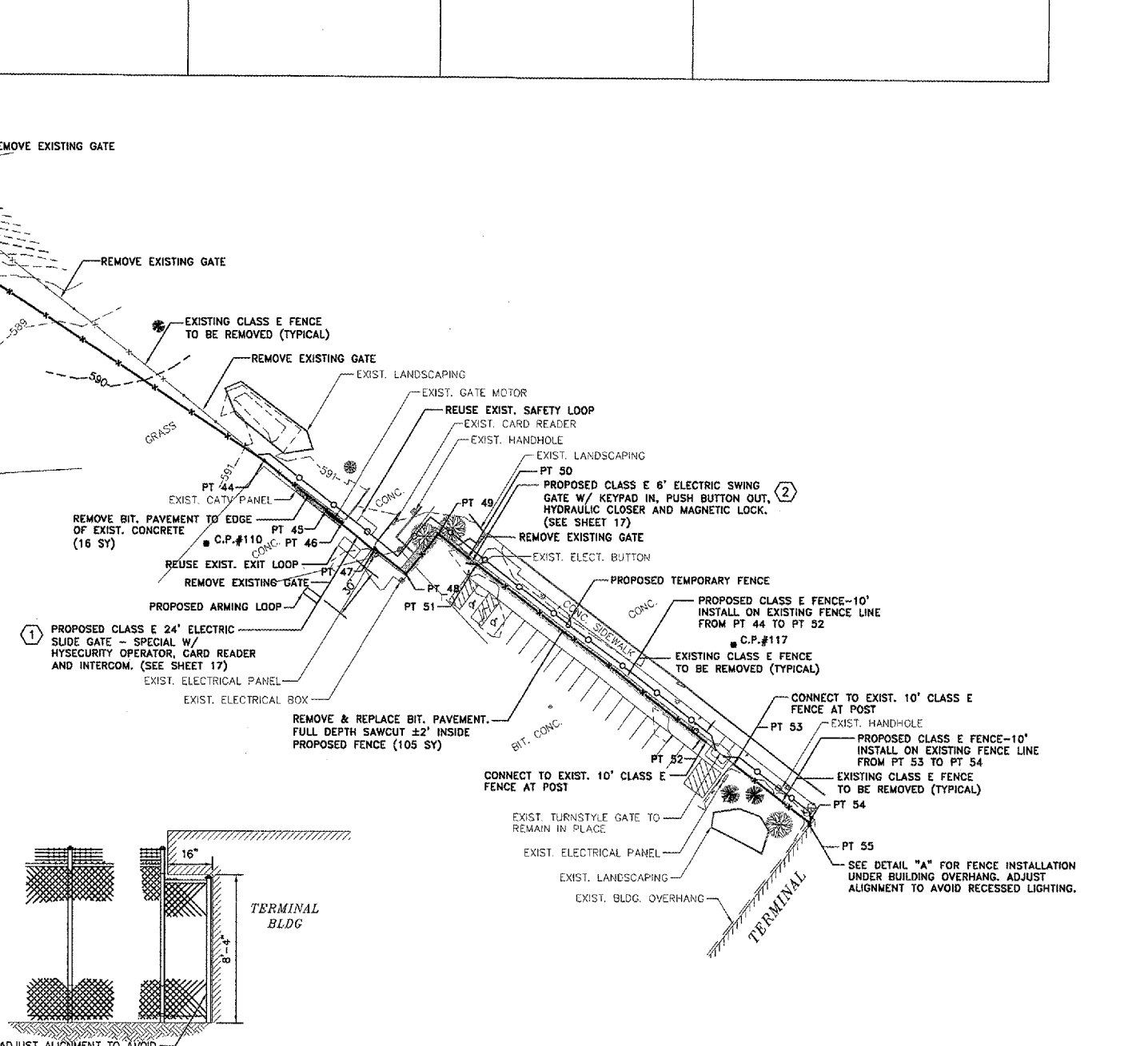
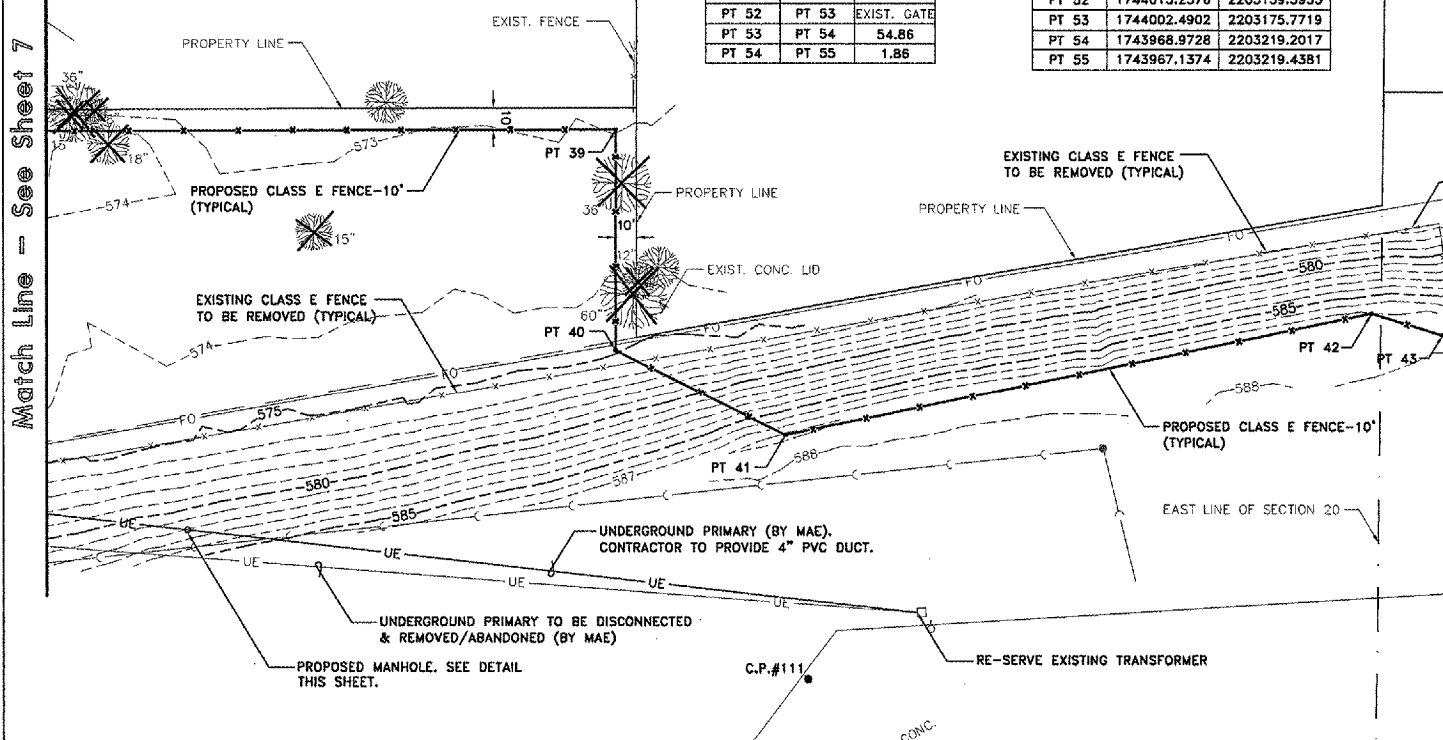
C.P. #110: N 1744129.1977 E 2202869.8059 ELEV - 591.18
 C.P. #111: N 1744129.0084 E 2202440.7660 ELEV - 590.41
 C.P. #117: N 1744071.6958 E 2203175.4091 ELEV - 592.60

| FROM POINT # | TO POINT # | LENGTH OF FENCE |
|--------------|------------|-----------------|
| PT 38 | PT 39 | 323.55 |
| PT 39 | PT 40 | 101.56 |
| PT 40 | PT 41 | 88.21 |
| PT 41 | PT 42 | 277.63 |
| PT 42 | PT 43 | 34.18 |
| PT 43 | PT 44 | 200.77 |
| PT 44 | PT 45 | 46.04 |
| PT 45 | PT 46 | 11.67 |
| PT 46 | PT 47 | 24' GATE |
| PT 47 | PT 48 | 22.75 |
| PT 48 | PT 49 | 29.40 |
| PT 49 | PT 50 | 21.53 |
| PT 50 | PT 51 | 6' GATE |
| PT 51 | PT 52 | 167.93 |
| PT 52 | PT 53 | EXIST. GATE |
| PT 53 | PT 54 | 54.86 |
| PT 54 | PT 55 | 1.86 |

| POINT # | NORTHING | EASTING |
|---------|--------------|--------------|
| PT 38 | 1744381.0483 | 2202028.1747 |
| PT 39 | 1744381.6033 | 2202351.7244 |
| PT 40 | 1744280.0451 | 2202351.4939 |
| PT 41 | 1744240.7695 | 2202430.4813 |
| PT 42 | 1744296.9015 | 2202702.3616 |
| PT 43 | 1744287.0215 | 2202735.0976 |
| PT 44 | 1744177.1443 | 2202903.1290 |
| PT 45 | 1744148.6882 | 2202939.3121 |
| PT 46 | 1744141.4669 | 2202948.4845 |
| PT 47 | 1744126.4336 | 2202967.6185 |
| PT 48 | 1744112.3717 | 2202985.5013 |
| PT 49 | 1744134.8990 | 2203004.3989 |
| PT 50 | 1744121.7403 | 2203021.4459 |
| PT 51 | 1744117.8706 | 2203026.4590 |
| PT 52 | 1744015.2576 | 2203159.3933 |
| PT 53 | 1744002.4902 | 2203175.7719 |
| PT 54 | 1743968.9728 | 2203219.2017 |
| PT 55 | 1743967.1374 | 2203219.4381 |

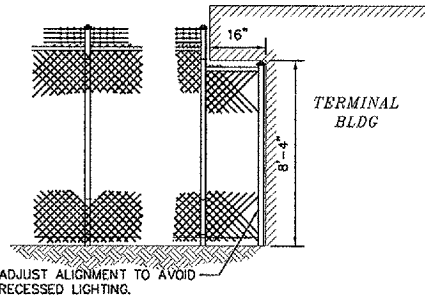


NOTE: COORDINATE ALL UTILITY REMOVAL AND NEW WORK WITH MIDAMERICAN ENERGY (MAE)



NOTES:
 1. PROVIDE PULLING EYE OPPOSITE EACH CONDUIT ENTRY. EYE SHALL BE 1"x12" SHOULDER EYE BOLT SUPPORTED WITH A PULLING EYE PLATE 8"x8"x12" ON THE OUTSIDE OF THE MANHOLE.
 2. INSTALL ALL CONDUITS WITH A SLIGHT SLOPE, SO THAT ANY EXCESS WATER WILL DRAIN TOWARD THE MANHOLE.

MANHOLE DETAIL
 NOT TO SCALE



DETAIL "A"
 NOT TO SCALE



| REVISIONS | | |
|-----------|------|------|
| NO. | ITEM | DATE |
| | | |
| | | |
| | | |

PLOTTING SCALE: 1" = 40'
 DRAWN BY: SPW
 CHECKED BY:
 DATE: MARCH 2006

McCLURE ENGINEERING ASSOCIATES, INC.
 4700 Kennedy Drive
 (309) 792-8350
 East Moline, Illinois 61724
 Fax (309) 792-8874
 Design Firm License: Illinois #184-000816
 Copyright 2005 by McClure Engineering Associates, Inc.

GENERAL CONSTRUCTION PLAN
 QUAD CITY INTERNATIONAL AIRPORT
 SECURITY FENCE - PHASE III
 Moline, ILLINOIS
 FILE NAME: R:\M0106.008\DWG\060806MOL.DWG\005
 JOB NUMBER: 01-29-06-008