

MCCLURE CONTROL POINTS:

C.P. #112: N 1743490.0029 E 2203875.2917 ELEV - 586.54
 C.P. #113: N 1743492.4686 E 2204384.9590 ELEV - 586.44
 C.P. #122: N 1743680.7117 E 2204902.5517 ELEV - 588.88

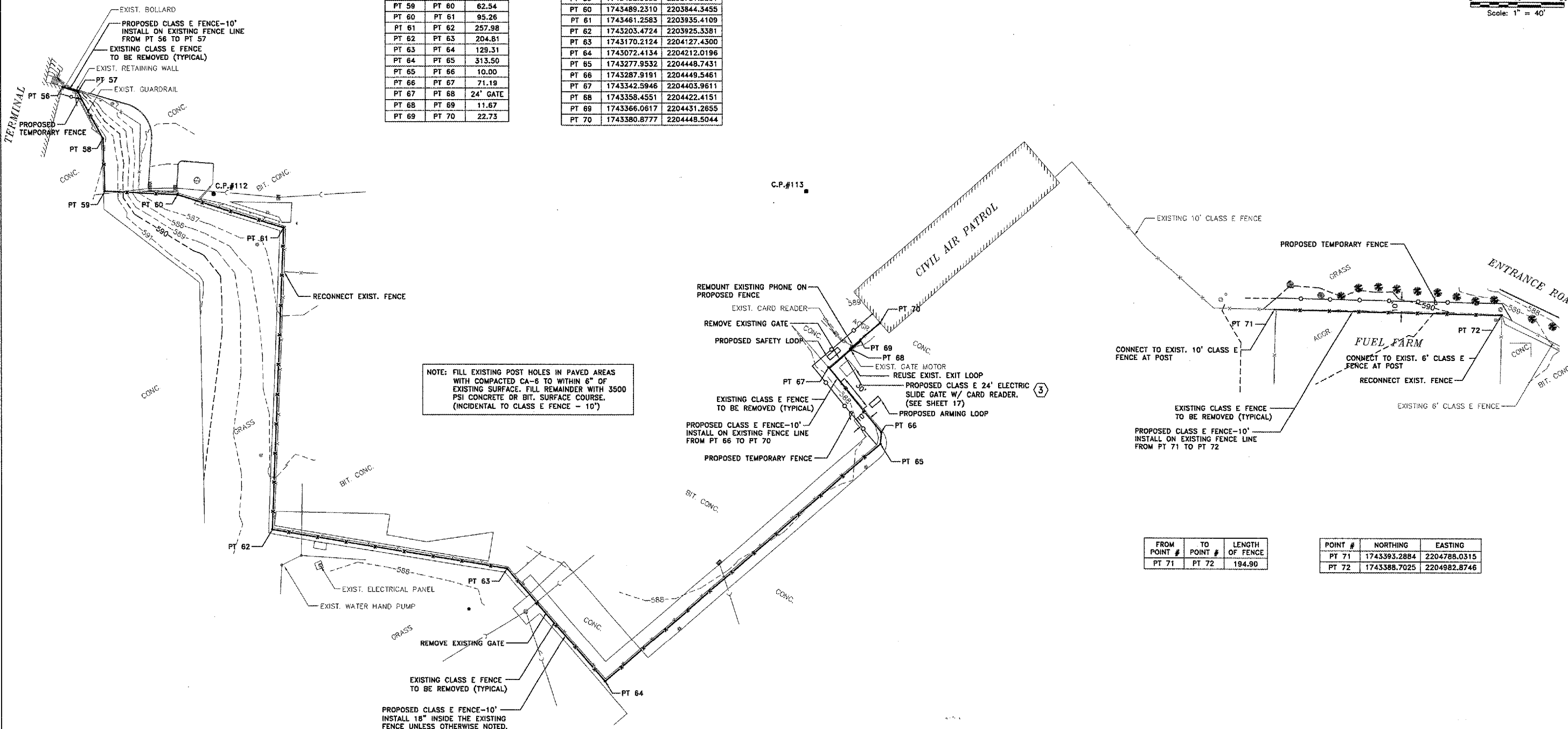
QU097



Scale: 1" = 40'

| FROM POINT # | TO POINT # | LENGTH OF FENCE |
|--------------|------------|-----------------|
| PT 56 | PT 57 | 13.78 |
| PT 57 | PT 58 | 45.02 |
| PT 58 | PT 59 | 44.69 |
| PT 59 | PT 60 | 62.54 |
| PT 60 | PT 61 | 95.26 |
| PT 61 | PT 62 | 257.98 |
| PT 62 | PT 63 | 204.81 |
| PT 63 | PT 64 | 129.31 |
| PT 64 | PT 65 | 313.50 |
| PT 65 | PT 66 | 10.00 |
| PT 66 | PT 67 | 71.19 |
| PT 67 | PT 68 | 24' GATE |
| PT 68 | PT 69 | 11.67 |
| PT 69 | PT 70 | 22.73 |

| POINT # | NORTHING | EASTING |
|---------|--------------|--------------|
| PT 56 | 1743580.6447 | 2203745.6066 |
| PT 57 | 1743576.6283 | 2203758.7845 |
| PT 58 | 1743537.0270 | 2203780.1895 |
| PT 59 | 1743492.3658 | 2203781.8891 |
| PT 60 | 1743489.2310 | 2203844.3455 |
| PT 61 | 1743461.2583 | 2203935.4109 |
| PT 62 | 1743203.4724 | 2203925.3381 |
| PT 63 | 1743170.2124 | 2204127.4300 |
| PT 64 | 1743072.4134 | 2204212.0196 |
| PT 65 | 1743277.9532 | 2204448.7431 |
| PT 66 | 1743287.9191 | 2204449.5461 |
| PT 67 | 1743342.5946 | 2204403.9611 |
| PT 68 | 1743358.4551 | 2204422.4151 |
| PT 69 | 1743366.0617 | 2204431.2655 |
| PT 70 | 1743380.8777 | 2204448.5044 |



NOTE: FILL EXISTING POST HOLES IN PAVED AREAS WITH COMPACTED CA-6 TO WITHIN 6" OF EXISTING SURFACE. FILL REMAINDER WITH 3500 PSI CONCRETE OR BIT. SURFACE COURSE. (INCIDENTAL TO CLASS E FENCE - 10')

| FROM POINT # | TO POINT # | LENGTH OF FENCE |
|--------------|------------|-----------------|
| PT 71 | PT 72 | 194.90 |

| POINT # | NORTHING | EASTING |
|---------|--------------|--------------|
| PT 71 | 1743393.2884 | 2204788.0315 |
| PT 72 | 1743388.7025 | 2204982.8746 |



| REVISIONS | | |
|-----------|------|------|
| NO. | ITEM | DATE |
| | | |
| | | |
| | | |

PLOTTING SCALE: 1" = 40'
 DRAWN BY: SPW
 CHECKED BY:
 DATE: MARCH 2006

McCLURE ENGINEERING ASSOCIATES, INC.
 4700 Kennedy Drive
 (309) 792-9350
 East Moline, Illinois 61844
 FAX (309) 792-9394
 Design Firm License: #184-000816
 Copyright 2006 by McClure Engineering Associates, Inc.

GENERAL CONSTRUCTION PLAN
 QUAD CITY INTERNATIONAL AIRPORT
 SECURITY FENCE - PHASE III
 Moline, Illinois
 FILE NAME: I:\M0106.008\DWG\06008MCL.DWG(C06)
 JOB NUMBER: 01-29-06-008