

MCCLURE CONTROL POINTS:

C.P. #103: N 1739061.5470 E 2202125.2675 ELEV - 578.60
 C.P. #119: N 1739658.7431 E 2202565.3875 ELEV - 578.45

FROM POINT #	TO POINT #	LENGTH OF FENCE
PT 107	PT 108	179.58
PT 108	PT 109	155.73
PT 109	PT 109A	112.54
PT 109A	PT 110	163.85
PT 110	PT 111	13.36
PT 111	PT 112	9.67
PT 112	PT 113	16' GATE
PT 113	PT 114	27.79
PT 114	PT 115	4' GATE
PT 115	PT 116	6.26

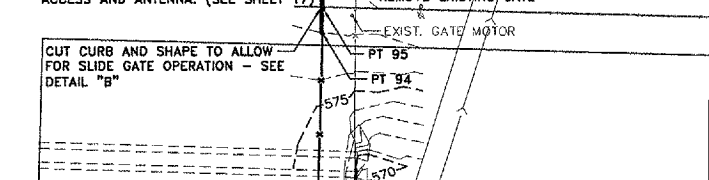
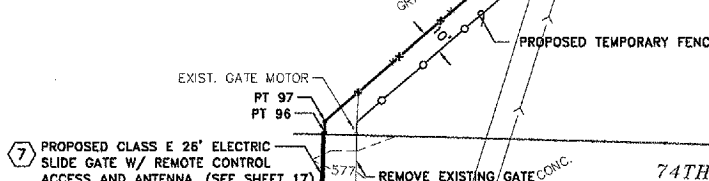
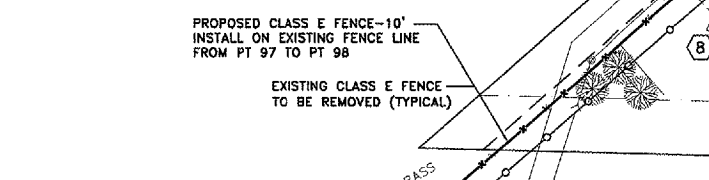
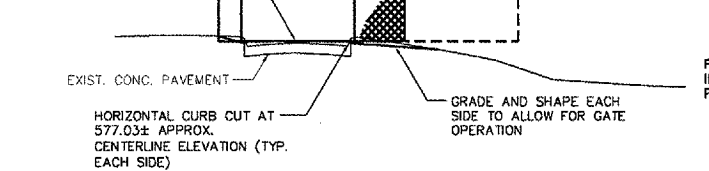
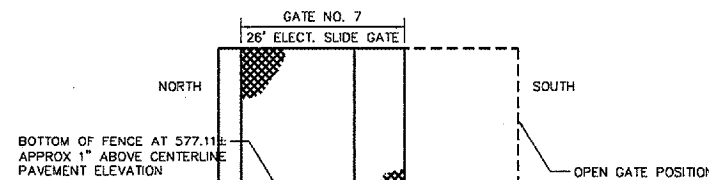
POINT #	NORTHING	EASTING
PT 107	1739453.7750	2202456.2889
PT 108	1739633.3008	2202460.7845
PT 109	1739736.3015	2202577.5692
PT 109A	1739733.4958	2202690.0769
PT 110	1739729.4110	2202853.8734
PT 111	1739716.0513	2202853.6440
PT 112	1739706.3827	2202853.4780
PT 113	1739690.0551	2202853.1977
PT 114	1739662.2717	2202852.7207
PT 115	1739657.9394	2202852.6463
PT 116	1739651.6783	2202852.5388

FROM POINT #	TO POINT #	LENGTH OF FENCE
PT 99	PT 100	4.71
PT 100	PT 101	5' GATE
PT 101	PT 102	19.09
PT 102	PT 103	16.25
PT 103	PT 104	9.67
PT 104	PT 105	16' GATE
PT 105	PT 106	13.73

POINT #	NORTHING	EASTING
PT 99	1739285.4959	2202176.6912
PT 100	1739281.9695	2202179.8012
PT 101	1739277.9720	2202183.3266
PT 102	1739290.8462	2202197.4202
PT 103	1739290.7350	2202213.6687
PT 104	1739290.6688	2202223.3385
PT 105	1739290.5571	2202239.6714
PT 106	1739290.4631	2202253.4016

FROM POINT #	TO POINT #	LENGTH OF FENCE
PT 109A	PT 154	148.37
PT 154	PT 155	25.00
PT 155	PT 156	54.00

POINT #	NORTHING	EASTING
PT 109A	1739733.4958	2202690.0769
PT 154	1739585.1750	2202686.3793
PT 155	1739584.5520	2202711.3715
PT 156	1739530.5687	2202710.0257

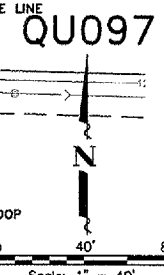
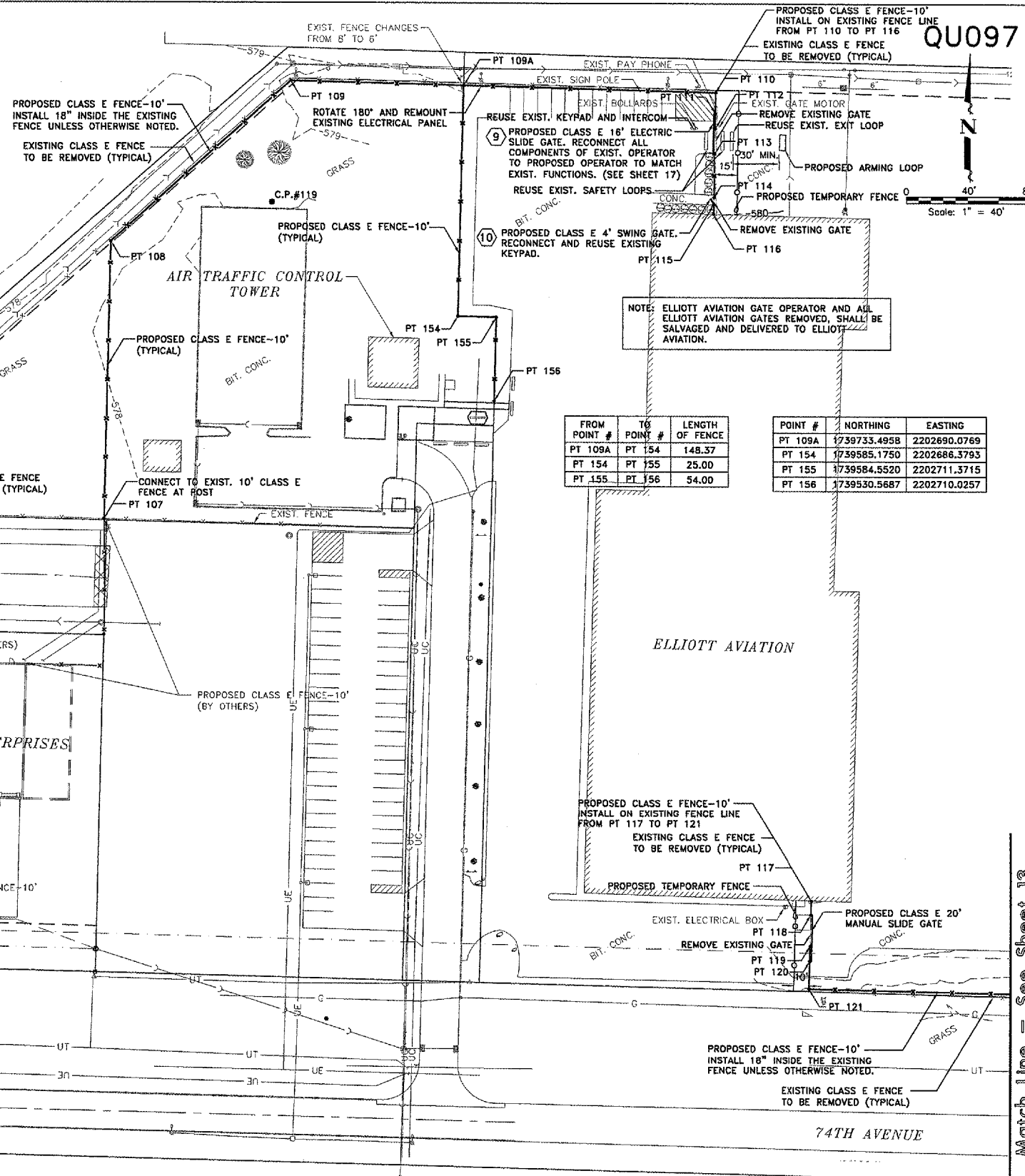


FROM POINT #	TO POINT #	LENGTH OF FENCE
PT 93	PT 94	194.10
PT 94	PT 95	11.67
PT 95	PT 96	26' GATE
PT 96	PT 97	5.31
PT 97	PT 98	242.67

POINT #	NORTHING	EASTING
PT 93	1738866.9680	2201853.4076
PT 94	1739061.0469	2201858.2460
PT 95	1739072.7133	2201856.5369
PT 96	1739099.0322	2201859.1930
PT 97	1739104.3365	2201859.3252
PT 98	1739262.5489	2202043.3297

FROM POINT #	TO POINT #	LENGTH OF FENCE
PT 117	PT 118	8.94
PT 118	PT 119	20' GATE
PT 119	PT 120	9.67
PT 120	PT 121	17.97
PT 122	PT 123	261.12

POINT #	NORTHING	EASTING
PT 117	1739207.9553	2202916.6894
PT 118	1739199.0176	2202916.4686
PT 119	1739178.6938	2202915.9666
PT 120	1739169.0267	2202915.7279
PT 121	1739151.0625	2202915.2841
PT 122	1739144.8655	2203176.3289



Match Line - See Sheet 11

Match Line - See Sheet 13

<p>QUAD CITY INTERNATIONAL AIRPORT Moline, IL</p>	<p>REVISIONS</p> <table border="1" style="width:100%; border-collapse: collapse;"> <thead> <tr> <th>NO.</th> <th>ITEM</th> <th>DATE</th> </tr> </thead> <tbody> <tr><td> </td><td> </td><td> </td></tr> <tr><td> </td><td> </td><td> </td></tr> <tr><td> </td><td> </td><td> </td></tr> </tbody> </table>	NO.	ITEM	DATE										<p>PLOTTING SCALE: 1" = 40'</p> <p>DRAWN BY: SPM</p> <p>CHECKED BY:</p> <p>DATE: MARCH 2006</p>	<p>McClure Engineering Associates, Inc. 4700 Kennedy Drive (309) 792-9350 East Moline, Illinois 61244 714 (309) 792-6974 Design Firm License: Illinois #184-000616 Copyright 2006 by McClure Engineering Associates, Inc.</p>	<p>GENERAL CONSTRUCTION PLAN</p> <p>QUAD CITY INTERNATIONAL AIRPORT SECURITY FENCE - PHASE III MOLINE, ILLINOIS</p> <p>FILE NAME: F:\M0106.008\DWG\06008MDL.DWG(C09) JOB NUMBER: 01-29-06-008</p>	<p>SHEET NO. 12 OF 17</p>
NO.	ITEM	DATE															