

MCCLURE CONTROL POINTS:

C.P. #101: N 1739058.0207 E 2203893.4479 ELEV - 579.57
 C.P. #102: N 1739087.3615 E 2203228.7857 ELEV - 576.62
 C.P. #121: N 1739803.8293 E 2204245.1617 ELEV - 579.25

QU097

FROM POINT #	TO POINT #	LENGTH OF FENCE
PT 121	PT 122	261.12
PT 122	PT 123	16' GATE
PT 123	PT 124	114.50
PT 124	PT 125	78.51
PT 125	PT 126	107.03
PT 126	PT 127	20.36
PT 127	PT 128	9.67
PT 128	PT 129	20' GATE
PT 129	PT 130	8.75
PT 130	PT 131	22.63

POINT #	NORTHING	EASTING
PT 121	1739151.0625	2202915.2841
PT 122	1739144.8655	2203176.3289
PT 123	1739144.4779	2203192.6576
PT 124	1739141.7606	2203307.1254
PT 125	1739220.2181	2203309.8848
PT 126	1739222.6951	2203202.8791
PT 127	1739243.0524	2203203.0606
PT 128	1739252.7187	2203203.1488
PT 129	1739273.0512	2203203.3282
PT 130	1739282.7982	2203203.4062
PT 131	1739281.0752	2203226.0252

FROM POINT #	TO POINT #	LENGTH OF FENCE
PT 132	PT 133	301.86
PT 133	PT 134	16' GATE
PT 134	PT 135	10.00
PT 135	PT 136	4' GATE
PT 136	PT 137	55.11
PT 137	PT 138	395.08
PT 138	PT 139	38.49

POINT #	NORTHING	EASTING
PT 132	1739136.8800	2203448.4269
PT 133	1739129.2463	2203750.1930
PT 134	1739128.8442	2203766.5180
PT 135	1739128.4979	2203776.4968
PT 136	1739128.7262	2203780.8701
PT 137	1739127.1342	2203835.9349
PT 138	1739522.0720	2203846.4601
PT 139	1739521.3971	2203884.9471

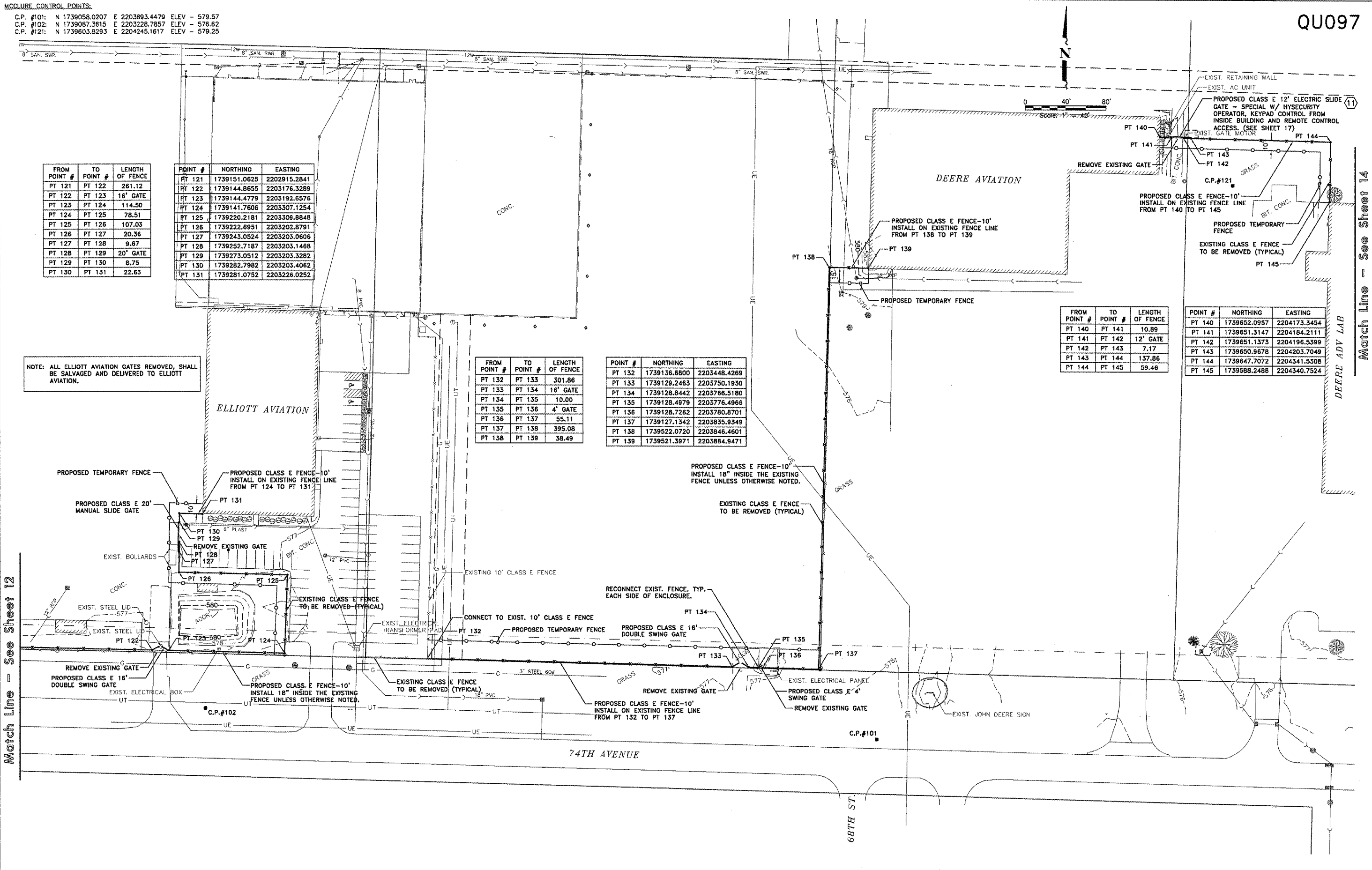
FROM POINT #	TO POINT #	LENGTH OF FENCE
PT 140	PT 141	10.89
PT 141	PT 142	12' GATE
PT 142	PT 143	7.17
PT 143	PT 144	137.86
PT 144	PT 145	59.46

POINT #	NORTHING	EASTING
PT 140	1739652.0957	2204173.3454
PT 141	1739651.3147	2204184.2111
PT 142	1739651.1373	2204196.5399
PT 143	1739650.9678	2204203.7049
PT 144	1739647.7072	2204341.5508
PT 145	1739588.2488	2204340.7524

NOTE: ALL ELLIOTT AVIATION GATES REMOVED, SHALL BE SALVAGED AND DELIVERED TO ELLIOTT AVIATION.

Match Line - See Sheet 12

Match Line - See Sheet 14



QUAD CITY INTERNATIONAL AIRPORT
 Moline, IL



REVISIONS		
NO.	ITEM	DATE

PLOTTING SCALE: 1" = 40'
 DRAWN BY: SPM
 CHECKED BY:
 DATE: MARCH 2006

McCLURE ENGINEERING ASSOCIATES, INC.
 4700 Kennedy Drive
 East Moline, Illinois 61704
 (309) 792-5300 Fax (309) 792-5374
 Design Firm License #184-000816
 Copyright 2006 by McClure Engineering Associates, Inc.

GENERAL CONSTRUCTION PLAN
 QUAD CITY INTERNATIONAL AIRPORT
 SECURITY FENCE - PHASE III
 MOLINE, ILLINOIS
 FILE NAME: F:\M0106.G08\DWG\060808MOL.DWG(C10)
 JOB NUMBER: 01-29-05-008

SHEET NO.
13
 OF 17