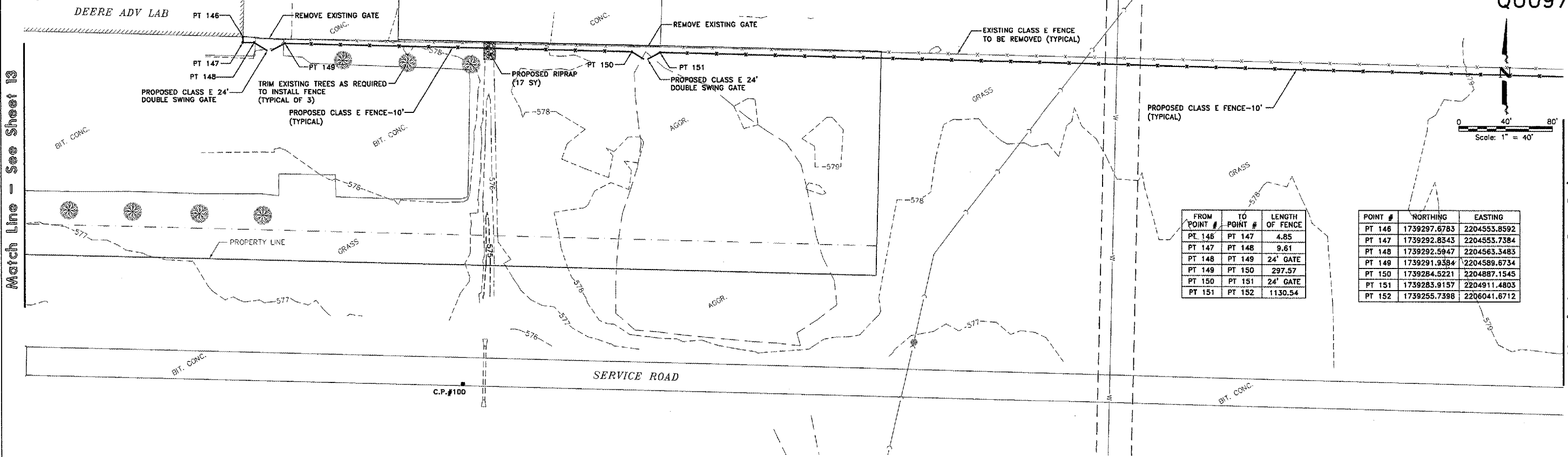


McCLURE CONTROL POINTS:

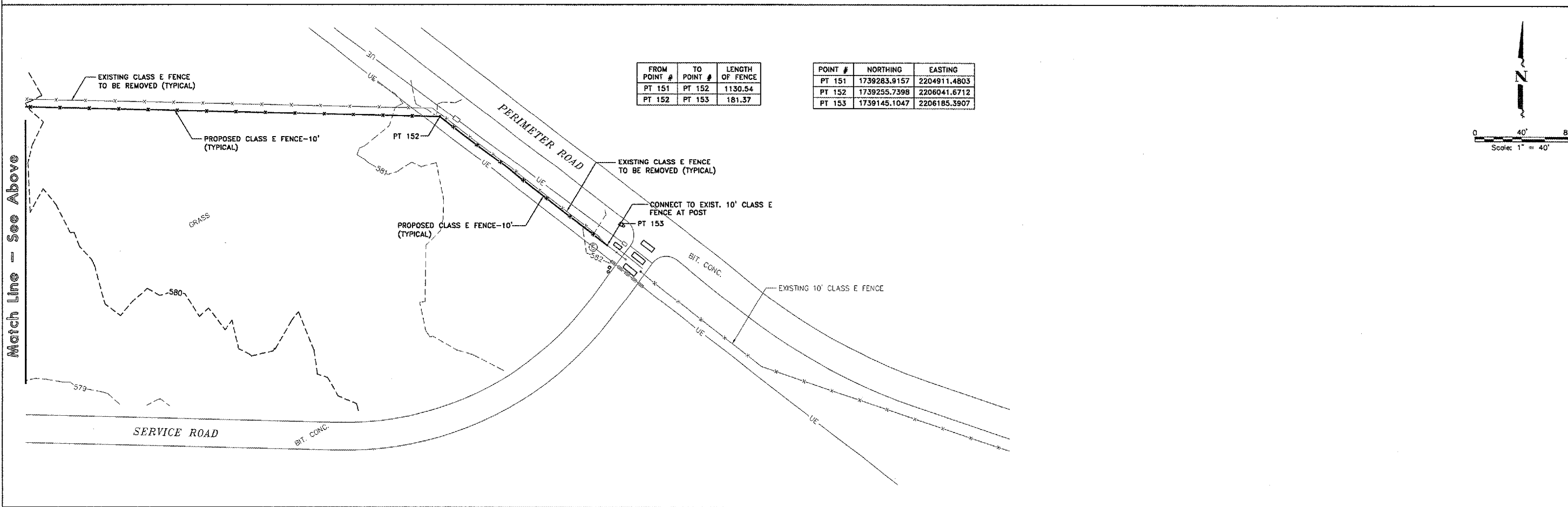
C.P. #100: N 1739002.8490 E 2204741.6298 ELEV - 576.61

QU097



FROM POINT #	TO POINT #	LENGTH OF FENCE
PT 146	PT 147	4.85
PT 147	PT 148	9.61
PT 148	PT 149	24' GATE
PT 149	PT 150	297.57
PT 150	PT 151	24' GATE
PT 151	PT 152	1130.54

POINT #	NORTHING	EASTING
PT 146	1739297.6783	2204555.8592
PT 147	1739292.8343	2204555.7384
PT 148	1739292.5947	2204563.3483
PT 149	1739291.938*	2204589.6734
PT 150	1739284.5221	2204887.1545
PT 151	1739283.9157	2204911.4803
PT 152	1739255.7398	2206041.6712



FROM POINT #	TO POINT #	LENGTH OF FENCE
PT 151	PT 152	1130.54
PT 152	PT 153	181.37

POINT #	NORTHING	EASTING
PT 151	1739283.9157	2204911.4803
PT 152	1739255.7398	2206041.6712
PT 153	1739145.1047	2206185.3907

QUAD CITY INTERNATIONAL AIRPORT
Moline, IL



REVISIONS		
NO.	ITEM	DATE

PLOTTING SCALE: 1" = 40'
DRAWN BY: SPW
CHECKED BY:
DATE: MARCH 2006

McCLURE ENGINEERING ASSOCIATES, INC.
4700 Kennedy Drive
(309) 792-9300
Coal Moline, Illinois 61704
FAX (309) 792-9894
Design Firm License: Illinois #184-000816
Copyright 2006 by McClure Engineering Associates, Inc.

GENERAL CONSTRUCTION PLAN
QUAD CITY INTERNATIONAL AIRPORT
SECURITY FENCE - PHASE III
MOLINE, ILLINOIS
JOB NUMBER: 01-29-06-008

SHEET NO. 14 OF 17