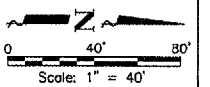
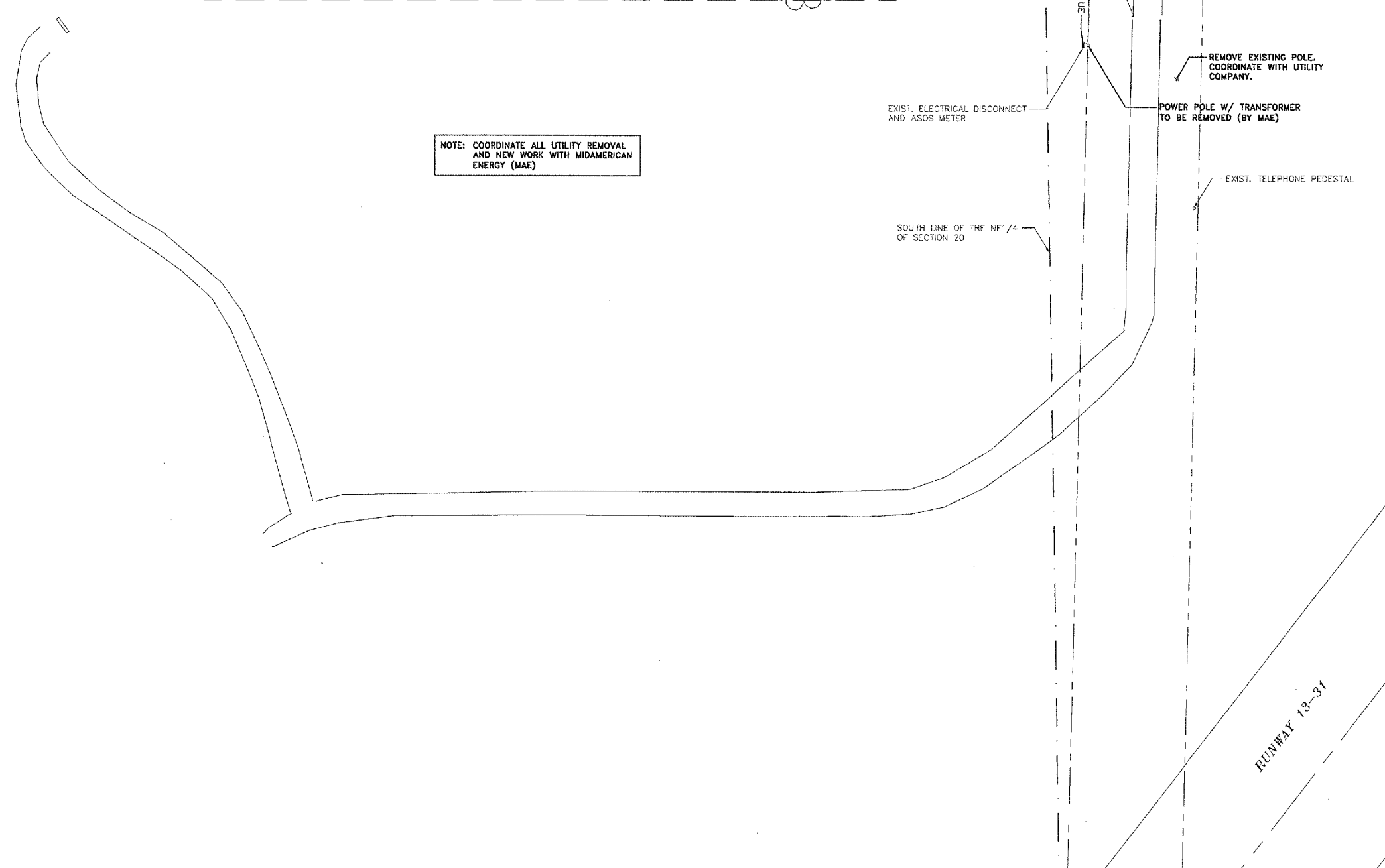


Match Line - See Sheet 5

QU097



TAXIWAY "H"



NOTE: COORDINATE ALL UTILITY REMOVAL AND NEW WORK WITH MIDAMERICAN ENERGY (MAE)

QUAD CITY INTERNATIONAL AIRPORT  
Moline, IL



REVISIONS		
NO.	ITEM	DATE

PLOTTING SCALE: 1" = 40'  
 DRAWN BY: SPM  
 CHECKED BY:  
 DATE: MARCH 2006

**McCLURE ENGINEERING ASSOCIATES, INC.**  
 4700 Kennedy Drive East Moline, Illinois 61244  
 (309) 792-9390 FAX (309) 792-8874  
Design Firm License: Illinois #184-000816  
 Copyright 2005 by McClure Engineering Associates, Inc.

**GENERAL CONSTRUCTION PLAN**  
 QUAD CITY INTERNATIONAL AIRPORT  
 SECURITY FENCE - PHASE III  
 MOLINE, ILLINOIS  
 FILE NAME: I:\MOT06.008\DWG\06008MDL.DWG(C12)  
 JOB NUMBER: 01-29-06-008

SHEET NO.  
**15**  
 OF 17