

POST AND BRACE TABLE		
DESCRIPTION	DIA.-INCHES	WT.-LBS/FT
LINE POST	3.0	4.65
TERMINAL POST	4.0	6.56
END POST	4.0	6.56
CORNER POST	4.0	6.56
PULL POST	4.0	6.56
GATE FRAMES	2.0	2.28
GATE POST	4.0	9.10
TOP RAIL	1.625	1.84
HORIZONTAL BRACE	1.625	1.84

NOTE: SEE DETAIL SHEET FOR SLIDING GATES

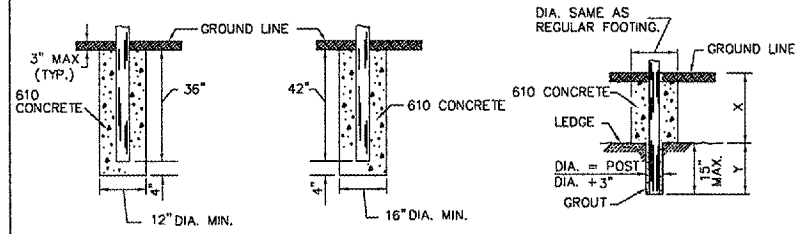
**PEDESTRIAN GATE**  
NOT TO SCALE

**VEHICLE GATE**  
NOT TO SCALE

**PULL POST**  
NOT TO SCALE

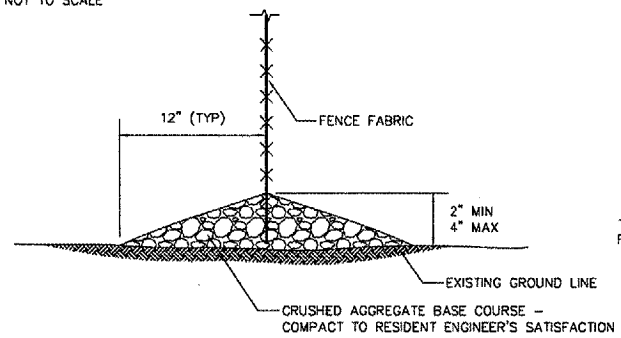
**LINE POST**  
NOT TO SCALE

**CORNER OR END POST**  
NOT TO SCALE



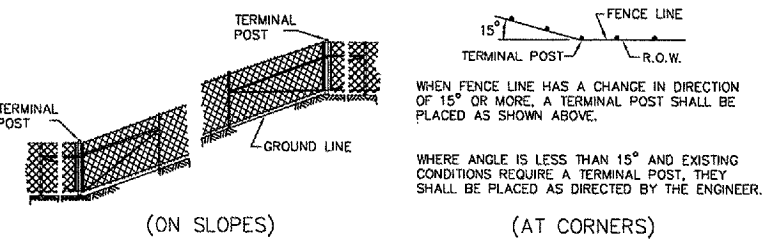
(LINE POST) (GATE & TERMINAL POST) (POST IN ROCK LEDGE)

NOTES: X + Y SHALL NOT EXCEED 24", 30" OR 36", AS APPLICABLE. WHEN X IS 0 TO 9", 15", OR 21", Y = 15", AND THE POST SHALL BE SHORTENED AS REQUIRED. WHEN X EXCEEDS 9", 15", OR 21", Y SHALL BE DECREASED CORRESPONDINGLY.



NOTE: HEIGHT OF FENCE ABOVE GROUND SHALL BE APPROVED PRIOR TO PLACING AGGREGATE

**AGGR. BASE DETAIL**  
NOT TO SCALE



WHEN FENCE LINE HAS A CHANGE IN DIRECTION OF 15° OR MORE, A TERMINAL POST SHALL BE PLACED AS SHOWN ABOVE.

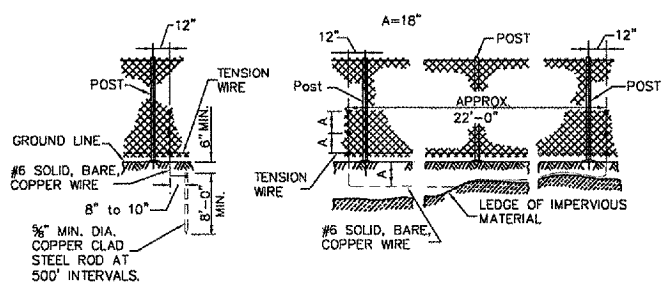
WHERE ANGLE IS LESS THAN 15° AND EXISTING CONDITIONS REQUIRE A TERMINAL POST, THEY SHALL BE PLACED AS DIRECTED BY THE ENGINEER.

**INSTALLATION DETAILS**  
NOT TO SCALE

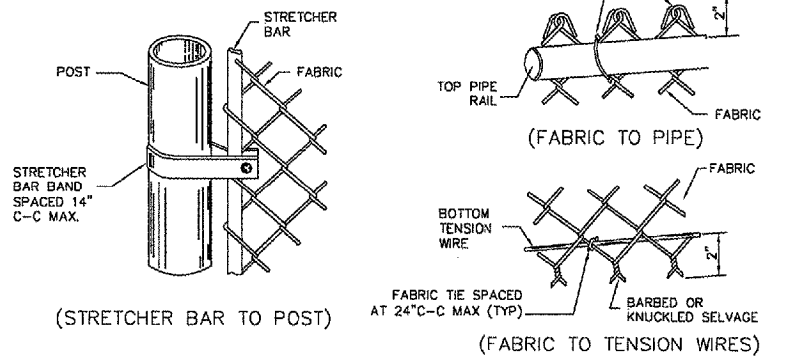
**GENERAL NOTES**

- 1.) PULL POSTS SHALL BE PLACED AT LOCATIONS DETERMINED BY THE ENGINEER. THEY SHALL BE PLACED AT 660' INTERVALS BETWEEN POSTS TO WHICH THE ENDS OF THE FABRIC ARE CLAMPED OR MIDWAY BETWEEN SUCH POSTS WHEN THE DISTANCE IS LESS THAN 1320' AND GREATER THAN 660'.
- 2.) TRUSS RODS SHALL BE 3/8" ROUND GALVANIZED STEEL ROD WITH GALVANIZED TURNBUCKLES. THE ZINC COATING SHALL NOT BE LESS THAN 1.2 OUNCES PER SQUARE FOOT OF SURFACE.
- 3.) "H" SECTION STRUCTURAL SHAPE AND SQUARE TUBULAR PIPE SHALL NOT BE ALLOWED.

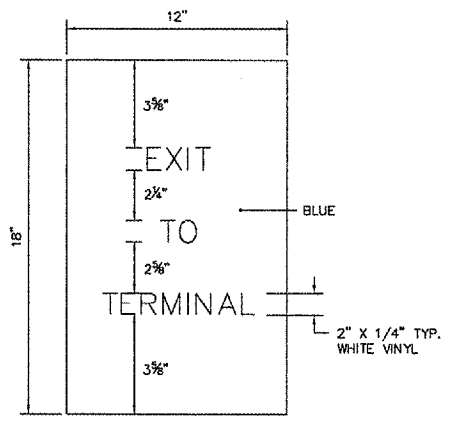
**FOOTING DETAILS**  
NOT TO SCALE



(STANDARD) (COUNTERPOISE - ALTERNATE)  
**PROTECTIVE ELECTRICAL GROUNDS**  
NOT TO SCALE

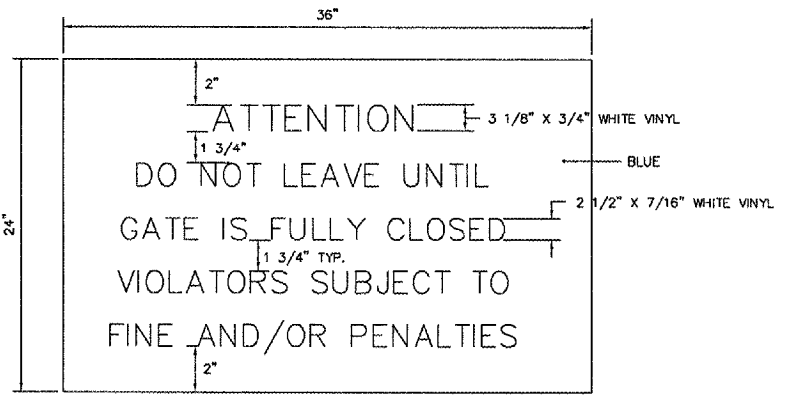


(STRETCHER BAR TO POST) (FABRIC TO TENSION WIRES)  
**FASTENING METHODS**  
NOT TO SCALE

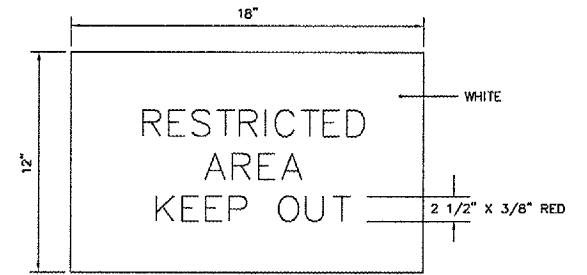


LOCATION: AT INSIDE OF GATE NO. 2 (6' GATE WEST OF TERMINAL) MATCH ENTRANCE ROAD SIGNS AND COLORS

- NOTES: 1.) 0.06 GA. ALUMINUM SHEET  
2.) SIGNS AND INSTALLATION SHALL BE INCIDENTAL TO THE UNIT PRICE BID FOR CLASS E FENCE-10'



LOCATION: AT ALL GATES ON BOTH SIDES OF THE FENCE MATCH ENTRANCE ROAD SIGNS AND COLORS



LOCATION: EACH GATE REQUIRES ONE SIGN AND EVERY 100' OF FENCE REQUIRES ONE SIGN PLACED ON THE OUTSIDE

**SIGN DETAILS**  
NOT TO SCALE

REVISIONS		
NO.	ITEM	DATE

PLOTTING SCALE:	1" = 1'
DRAWN BY:	SPM
CHECKED BY:	
DATE:	MARCH 2006