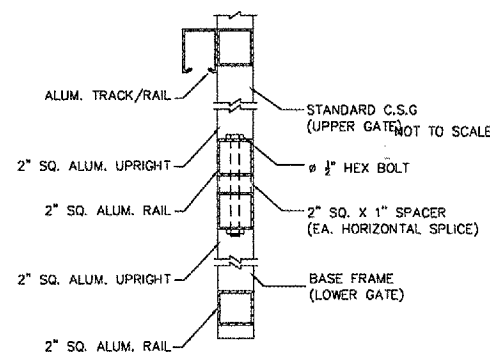
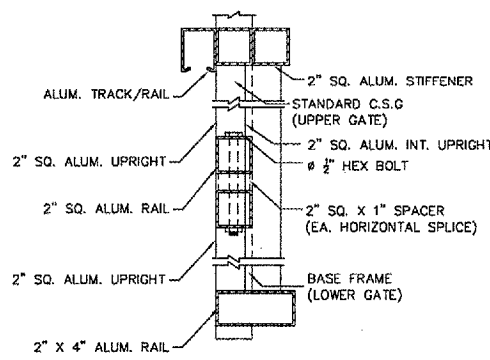


GATE ELEVATION (3 BAYS SHOWN)

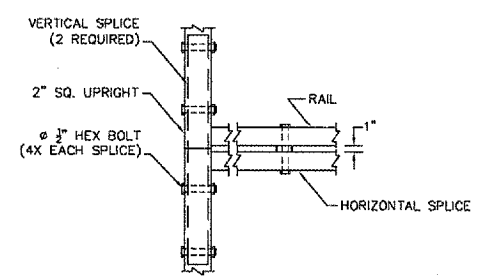


OPENING	LENGTH (L)	GATE POST (G)	BAYS	OVERHANG
1/5 POST FACE TO 1/5 POST FACE	0/5 DIM OF GATE LEAF	0/5 POST FACE TO 0/5 POST FACE	NUMBER OF BAYS WITH CHAIN LINK	NUMBER OF BAYS WITHOUT CHAIN LINK
12'-0"	19'-9"	7'-6"	(2) TWO	(1) ONE
16'-0"	26'-3"	10'-0"	(2) TWO	(1) ONE
20'-0"	30'-3"	10'-0"	(3) THREE	(1) ONE
24'-0"	36'-3"	12'-0"	(3) THREE	(2) TWO
26'-0"	38'-3"	12'-0"	(4) FOUR	(2) TWO

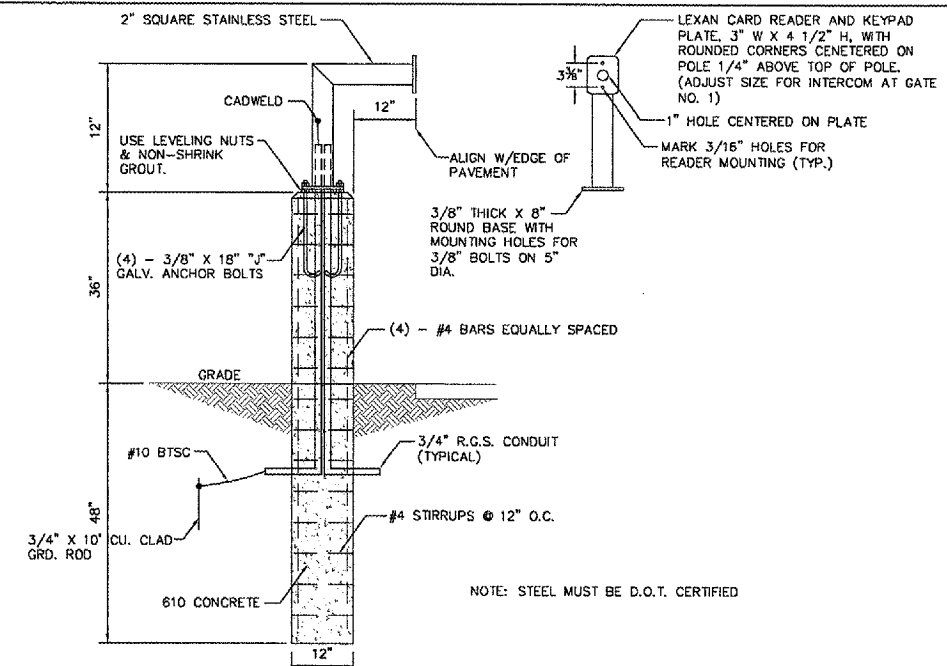
SECTION A (6'-22' GATES)
NOT TO SCALE



SECTION A (23'-30' GATES)
NOT TO SCALE



DETAIL B HORIZONTAL & VERTICAL SPLICE
NOT TO SCALE



CARD READER/KEY PAD PEDESTAL
NOT TO SCALE
EXISTING ELECTRIC GATE INFORMATION

NO.	LOCATION	SIZE	OPERATOR	POWER	ACCESS	OTHER COMPONENTS
1	WEST OF TERMINAL - MAIN GATE	24' SLIDE	LINEAR	277/480V, 3 PHASE	CARD READER AND INTERCOM	SAFETY LOOP; EXIT LOOP
2	WEST OF TERMINAL	6' SWING	NONE	UNKNOWN	KEYPAD IN, PUSH BUTTON OUT	MAG LOCK
3	C.A.P. BLDG.	24' SLIDE	STANLEY	120/208V, 3 PHASE	CARD READER AND TELEPHONE	EXIT LOOP
4	T-HANGER ROAD	26' SLIDE	STANLEY	208V, 1 PHASE	KEYPAD AND SLIDE CARD	SAFETY LOOP; EXIT LOOP
5	TARGET AVIATION	8' DOUBLE SWING	NONE	POWER FROM T-HANGER GATE	KEYPAD IN, PUSH BUTTON OUT	
7	W. END 74TH AVE.	26' DOUBLE SWING	2 - STANLEY	480V, 3 PHASE	REMOTE CONTROL W/ ANTENNA	
8	SPACE INDUSTRIES	16' SLIDE	STANLEY	120V, 1 PHASE	REMOTE CONTROL W/ ANTENNA	
9	ELLIOTT AVIATION	16' SLIDE	OSCO, 3/4 HP	230V, 1 PHASE, 4.1 A	KEYPAD; PUSH BUTTONS ON OPERATOR PANEL; REMOTE FROM INSIDE BLDG.; INTERCOM	2 SAFETY LOOPS; EXIST LOOP; POWER FOR SIGNS FROM OPERATOR PANEL; PHOTOCELL ON OPERATOR PANEL
10	ELLIOTT AVIATION	4' SWING	NONE	UNKNOWN	KEYPAD	MAG LOCK
11	DEERE AVIATION	12' SLIDE	HYSECURITY, 1 HP	120V, 1 PHASE, 14.8 A	KEYPAD IN BLDG. AND REMOTE CONTROL	

NOTES:
1) THE ABOVE TABLE IS BASED UPON THE BEST INFORMATION AVAILABLE
2) CONTRACTOR TO FIELD VERIFY EXISTING GATE CONDITIONS AND ENSURE COMPATIBILITY WITH PROPOSED GATE REQUIREMENTS

PROPOSED ELECTRIC GATE INFORMATION

NO.	LOCATION	SIZE	OPERATOR	ACCESS	OTHER COMPONENTS	REMARKS
1	WEST OF TERMINAL - MAIN GATE	24' SLIDE	HYSECURITY 222CF, 1HP	CARD READER AND INTERCOM ON PEDESTAL	REUSE EXISTING SAFETY & EXIT LOOPS	ADD ARMING LOOP
2	WEST OF TERMINAL	6' SWING	NONE	KEYPAD IN, PUSH BUTTON OUT, MAG LOCK	HYDRAULIC GATE CLOSER - SENTINAL SN55 SL OR EQUAL	PROVIDE PROVISION FOR PADLOCK
3	C.A.P. BLDG.	24' SLIDE	LIFTMASTER SL 585, 1HP OR APPROVED EQUAL	CARD READER ON PEDESTAL, REUSE TELEPHONE	REUSE EXIT LOOP	ADD SAFETY & ARMING LOOP
4	T-HANGER ROAD	26' SLIDE	LIFTMASTER SL 585, 1HP OR APPROVED EQUAL	KEYPAD ON PEDESTAL	PROVIDE NEMA ENCLOSURE; ABANDON EXISTING SAFETY & EXIT LOOPS	ADD SAFETY, EXIT AND ARMING LOOPS
5	TARGET AVIATION	5' TURNSTILE	LIFTMASTER SL 585, 1HP OR APPROVED EQUAL	KEYPAD IN, FREE OUT		
6	S. SIDE 76TH AVE.	12' SLIDE	LIFTMASTER SL 585, 1HP OR APPROVED EQUAL	REUSE KEYPAD IN BLDG. & REMOTE CONTROL		MATCH EXISTING SYSTEM
7	W. END 74TH AVE.	26' SLIDE	LIFTMASTER SL 585, 1HP OR APPROVED EQUAL	REMOTE CONTROL		MATCH EXISTING SYSTEM
8	SPACE INDUSTRIES	16' SLIDE	LIFTMASTER SL 585, 1HP OR APPROVED EQUAL	REMOTE CONTROL		MATCH EXISTING SYSTEM
9	ELLIOTT AVIATION	16' SLIDE	LIFTMASTER SL 585, 1HP OR APPROVED EQUAL	REUSE KEYPAD, INTERCOM & REMOTE INSIDE BLDG.	REUSE EXISTING SAFETY & EXIT LOOPS; RECONNECT POWER FOR SIGNS; PROVIDE PHOTOCELL	ADD ARMING LOOP
10	ELLIOTT AVIATION	4' SWING	NONE	REUSE KEYPAD	MAG LOCK	MATCH EXISTING SYSTEM
11	DEERE AVIATION	12' SLIDE	HYSECURITY 222CF, 1HP	REUSE KEYPAD IN BLDG. & REMOTE CONTROL	WARNING ALARM, OBSTRUCTION SENSING	MATCH EXISTING SYSTEM

NOTES:
1) CARD READER SHALL BE INDALA LEGACY WALLSWITCH PROXIMITY READERS OR APPROVED EQUAL.
2) KEYPADS SHALL BE INDALA ARK-501 KEYPAD READERS OR APPROVED EQUAL.
3) INTERCOM AT GATE NO. 1 SHALL BE AIPHONE CATALOG NUMBER NE-JA OR APPROVED EQUAL AND INCLUDES REPLACEMENT WITH A MASTER INTERCOM UNIT, CATALOG NUMBER NEM-30A/C, AT THE AIRCRAFT RESCUE AND FIRE FIGHTING (ARFF) BUILDING, AS WELL AS A CATALOG NUMBER PS-2420UL, 24V DC POWER SUPPLY AND THE REPLACEMENT OF 11 ADDITIONAL NE-JA INTERCOMS AT ARFF.
4) GATE AND OPERATOR INSTALLATION SHALL INCLUDE CARD READERS, KEYPADS, INTERCOMS, PEDESTALS, SAFETY LOOPS AND ARMING LOOPS AS DESCRIBED ABOVE AND SHOWN ON THE PLANS FOR EACH INDIVIDUAL GATE, AS WELL AS RECONNECTION OF ITEMS SHOWN TO BE REUSE.
5) INSTALLATION SHALL ALSO INCLUDE, BUT NOT BE LIMITED TO, ALL CONDUIT, CABLE, WIRING, JUNCTION BOXES, SERVICE DISCONNECTS, WATERPROOF SPLICES AND CONCRETE OPERATOR PADS AS REQUIRED TO COMPLETE EACH ELECTRIC GATE SYSTEM.
6) THE CONTRACTOR SHALL FIELD VERIFY EXISTING VOLTAGE AND CURRENT AT EACH LOCATION, AS WELL AS, MEASUREMENTS, CONSTRUCTION CRITERIA, MATERIAL REQUIREMENTS AND SIMILAR DATA TO ENSURE COMPLETION OF THE WORK TO THE PROPOSED REQUIREMENTS.
7) THE CONTRACTOR SHALL SUBMIT SHOP DRAWINGS AND BY DOING SO REPRESENTS THAT THEY HAVE DETERMINED AND VERIFIED ALL FIELD MEASUREMENTS, FIELD CONSTRUCTION CRITERIA, MATERIALS, CATALOG NUMBERS AND SIMILAR DATA AND THAT THEY HAVE CHECKED AND COORDINATED THE INFORMATION CONTAINED IN SUCH SUBMITTALS WITH THE REQUIREMENTS OF THE WORK AND THE SPECIAL PROVISIONS.