

CONSTRUCTION PLANS

FOR

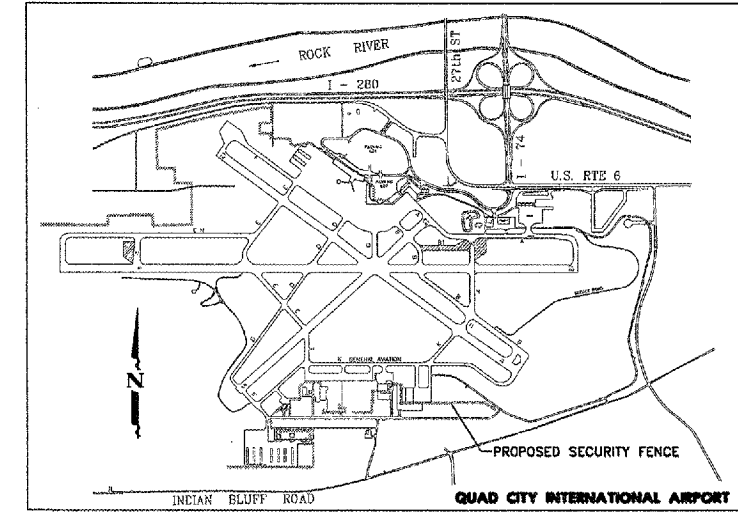
QUAD CITY

INTERNATIONAL AIRPORT

ROCK ISLAND COUNTY

CONSTRUCT SECURITY FENCE

PHASE III



PROJECT LOCATION MAP

UTILITY NOTE

THE LOCATION OF UNDERGROUND UTILITIES AS INDICATED ON THE PLANS HAS BEEN OBTAINED FROM EXISTING RECORDS. NEITHER THE OWNER NOR THE ENGINEER ASSUMES ANY RESPONSIBILITY WHATSOEVER, IN RESPECT TO THE ACCURACY OR SUFFICIENCY OF THE INFORMATION AND THERE IS NO GUARANTEE, EITHER EXPRESSED OR IMPLIED, THAT THE CONDITIONS THAT ARE INDICATED ARE REPRESENTATIVE OF THOSE TO BE ENCOUNTERED IN THE CONSTRUCTION. IT SHALL BE THE CONTRACTOR'S RESPONSIBILITY TO DETERMINE THE EXACT LOCATION AND ELEVATION OF ALL UTILITIES AND TO ASCERTAIN WHETHER ANY ADDITIONAL FACILITIES OTHER THAN THOSE SHOWN ON THE PLAN MAY BE PRESENT. GIVE FORTY-EIGHT HOURS NOTICE TO ALL UTILITY COMPANIES PRIOR TO STARTING CONSTRUCTION OPERATIONS, INCLUDING QUAD CITY AIRPORT & F.A.A. FACILITIES NOT ON J.U.L.I.E.

INDEX OF SHEETS

- 1 COVER SHEET & INDEX OF SHEETS
- 2 SUMMARY OF QUANTITIES, GENERAL NOTES & LEGEND
- 3 SAFETY PLAN & INDEX MAP
- 4-15 GENERAL CONSTRUCTION PLANS
- 16 FENCE DETAILS
- 17 SLIDING GATE DETAILS



ILLINOIS PROJECT MLI-3580
 AIP PROJECT NO. 3-17-0068-XX
 AIRPORT CLASSIFICATION - AIR CARRIER

LATITUDE 41°26'51.4", LONGITUDE 91°31'41.6", ELEVATION 589 M.S.L.

AIRCRAFT APPROACH CATEGORY - D

AIRCRAFT DESIGN GROUP - IV

JUNE 9, 2006
OFFICIAL DATE OF PLANS

BEFORE YOU DIG CALL J.U.L.I.E.
1-800-892-0123

BEFORE YOU DIG CALL QUAD CITY AIRPORT
1-309-764-9621

BEFORE YOU DIG CALL F.A.A.
1-309-793-5832

SUMMARY OF QUANTITIES
SEE SHEET 2

QUAD CITY OFFICE
McCLURE ENGINEERING ASSOCIATES, INC.
 4700 Kennedy Drive East Moline, Illinois 61244
 (309) 792-9350 FAX (309) 792-8874
 Design Firm License: Illinois #184-000816
 Copyright 2006 by McClure Engineering Associates, Inc.



McClure Engineering Associates, Inc.
 BY: *Steven P. Math*
 DATE: 6/9/06
 RENEWAL DATE: 11/30/07

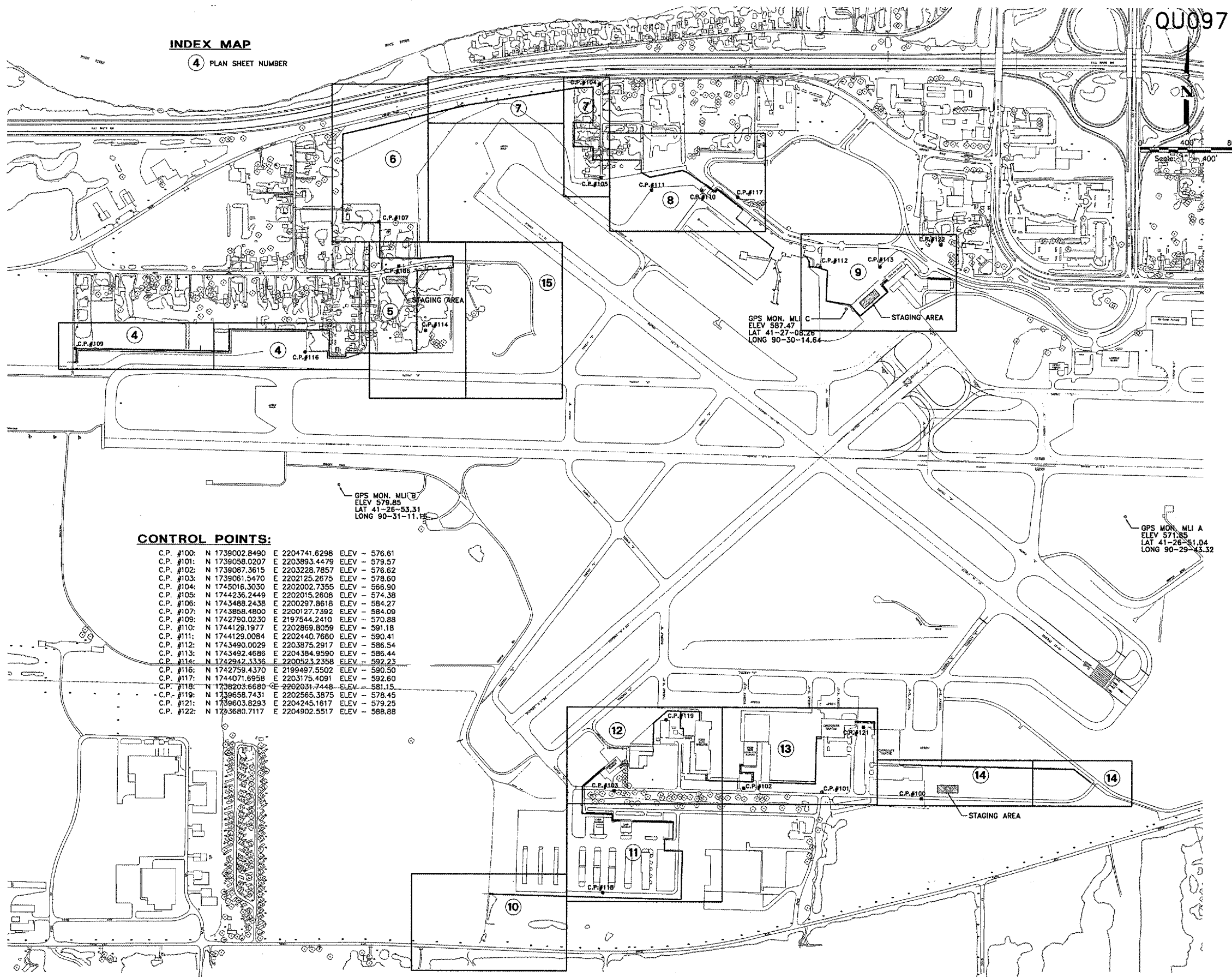
Metropolitan Airport Authority OF ROCK ISLAND COUNTY
Boyer Carter
 6/9/06 DATE APPROVED

SAFETY PLAN NOTES:

- 1.) IT SHALL BE THE CONTRACTOR'S RESPONSIBILITY TO COORDINATE ALL CONSTRUCTION ACTIVITIES AND SCHEDULES WITH M.A.A. AND THE ENGINEER.
- 2.) THE METROPOLITAN AIRPORT AUTHORITY SHALL RETAIN THE RIGHT TO RESTRICT ACCESS TO THE CONSTRUCTION AREA DURING EMERGENCY SITUATIONS, OR PERIODS OF INCLEMENT WEATHER REQUIRING SPECIAL AIRCRAFT HANDLING CONDITIONS, OR DURING VISITS BY HIGH RANKING DIGNITARIES OR OTHER SECURITY RELATED ACTIVITIES.
- 3.) THE CONTRACTOR SHALL BE RESPONSIBLE FOR MAINTAINING AND SUPERVISING ALL SAFETY PRECAUTIONS AND PROGRAMS IN CONNECTION WITH THE PROJECT.
 - A. THE CONTRACTOR SHALL PROCURE, FROM THE AIRPORT AUTHORITY, SECURITY IDENTIFICATION BADGES FOR HIS EMPLOYEES TO GUARANTEE AT LEAST ONE MEMBER OF EACH CONSTRUCTION CREW WILL HAVE A BADGE. ANY CONSTRUCTION CREW WITHOUT A BADGED MEMBER SHALL NOT BE ALLOWED ON THE AIRFIELD SITE.
 - B. A 24 HOUR LOCAL TELEPHONE SHALL BE ESTABLISHED AND MANNED AT ALL TIMES BY THE CONTRACTOR TO PROVIDE INSTANT RESPONSE TO BREACHES OF SAFETY/SECURITY AND MAINTENANCE OF SIGNS/BARRICADES, ETC.
- 4.) THE CONTRACTOR SHALL TAKE ALL REASONABLE PRECAUTIONS FOR THE SAFETY OF AND SHALL PROVIDE ALL REASONABLE PROTECTION TO PREVENT DAMAGE, INJURY, OR LOSS TO:
 - A. ALL EMPLOYEES ON THE PROJECT AND ALL OTHER PERSONS WHO MAY BE AFFECTED.
 - B. ALL THE WORK AND ALL MATERIALS AND EQUIPMENT TO BE INCORPORATED UNDER THE CARE, CUSTODY, OR CONTROL OF THE CONTRACTOR OR ANY OF HIS SUBCONTRACTORS.
 - C. ALL EXISTING FACILITIES THAT ARE TO REMAIN IN PLACE.
- 5.) ALL OPERATIONS SHALL BE IN CONFORMANCE WITH AC 150/5370-2 (LATEST EDITION) OPERATIONAL SAFETY ON AIRPORTS DURING CONSTRUCTION.
- 6.) ALL CONSTRUCTION VEHICLES, EQUIPMENT AND PERSONNEL SHALL REMAIN CLEAR OF THE AIRFIELD SAFETY AREA LIMITS, UNLESS AUTHORIZED BY THE ENGINEER AND MAA.
- 7.) ALL CONSTRUCTION VEHICLES AND EQUIPMENT SHALL PROMINENTLY DISPLAY 3'x3' ORANGE AND WHITE CHECKERED FLAGS. NO PERSONAL VEHICLES SHALL BE ALLOWED ON THE CONSTRUCTION SITE. ALL VEHICULAR TRAFFIC SHALL BE KEPT TO A MINIMUM. WHERE TRAFFIC CANNOT BE AVOIDED, IT SHALL BE KEPT WITHIN THE CONSTRUCTION LIMITS. ALL VEHICLES ON THE AIRFIELD REQUIRE APPROVAL OF THE ENGINEER/MAA.
- 8.) GATES SHALL BE MANNED BY A COMPETENT GUARD OR LOCKED AT ALL TIMES. ANY GAPS IN FENCING FOR CONSTRUCTION PURPOSES SHALL BE RESECURED DURING NON-WORKING HOURS AND WHEN THE CONTRACTOR IS NOT IN THE IMMEDIATE VICINITY. VIOLATIONS ARE SUBJECT TO FINES/PENALTIES AND THE CONTRACTOR SHALL PAY ANY FINES INCURRED, INCLUDING FINES INCURRED BY THE ENGINEER AND/OR MAA DUE TO THE CONTRACTOR'S NEGLIGENCE.
- 9.) NO CONSTRUCTION ACTIVITIES SHALL TAKE PLACE WITHIN 200' OF THE CENTER LINE OF RUNWAYS AND TAXIWAYS UNLESS AUTHORIZED BY THE ENGINEER & M.A.A.
- 10.) THE CONTRACTOR SHALL USE THE DESIGNATED HAUL ROUTES, CONSTRUCTION STAGING AREAS AND ENTRANCES TO THE AIRFIELD AS SHOWN ON THE SAFETY PLAN. NO CONSTRUCTION TRAFFIC SHALL BE ALLOWED ON THE AIRFIELD OUTSIDE THE HAUL ROUTES AND WORK AREAS UNLESS OTHERWISE AUTHORIZED BY THE ENGINEER AND MAA.
- 11.) IT WILL BE THE CONTRACTOR'S RESPONSIBILITY TO RESTORE THE CONSTRUCTION STAGING AREA, THE CONSTRUCTION HAUL ROAD AND AREAS OUTSIDE THE CONSTRUCTION LIMITS TO THEIR ORIGINAL CONDITION FOLLOWING COMPLETION OF CONSTRUCTION. THIS MAY INCLUDE, BUT NOT BE LIMITED TO, REGRADING, FERTILIZING, SEEDING, AND MULCHING OF EARTH SURFACES TO THE SATISFACTION OF THE ENGINEER. ALL GROUND SURFACES, PAVEMENTS, AND FACILITIES DAMAGED BY THE CONTRACTOR WHILE COMPLETING THE PROPOSED WORK SHALL BE REPAIRED OR RETURNED TO ITS ORIGINAL STATE. COST TO BE INCLUDED IN THE MAINTENANCE OF TRAFFIC LUMP SUM PRICE.
- 12.) DUST ABATEMENT MEASURES WILL BE REQUIRED, WHEN, IN THE OPINION OF THE RESIDENT ENGINEER, A HAZARD TO AIR TRAFFIC, LOCAL RESIDENTS, OR CONSTRUCTION PROJECT PERSONNEL EXISTS. PREVENTATIVE MEASURES CAN INCLUDE, BUT ARE NOT LIMITED TO, WATERING AND TREATMENT WITH CALCIUM CHLORIDE.
- 13.) UNLESS OTHERWISE DIRECTED, ALL MATERIALS NOT TO BE INCORPORATED IN EACH CONTRACT SHALL BE DISPOSED OF OFF-SITE AT THE CONTRACTOR'S EXPENSE. NOTHING MOUNDED HIGHER THAN 3" ABOVE THE EXISTING SURFACE WILL BE PERMITTED ON THE AIRFIELD AT ANY TIME.
- 14.) SEQUENCE OF CONSTRUCTION:
 - A. ALL STAGES OF CONSTRUCTION MUST BE COORDINATED WITH THE M.A.A. AND THE ENGINEER.
 - B. M.A.A. RESERVES THE RIGHT TO CHANGE OR ADJUST ANY SEQUENCE OF CONSTRUCTION.
 - C. TEMPORARY FENCE, WHERE SHOWN ON THE PLANS, SHALL BE SECURELY IN PLACE BEFORE EXISTING FENCE IS REMOVED.
 - D. WHERE NO TEMPORARY FENCE IS SHOWN, THE PROPOSED FENCE SHALL BE IN PLACE BEFORE THE EXISTING FENCE IS REMOVED.

INDEX MAP

4 PLAN SHEET NUMBER



CONTROL POINTS:

C.P. #100:	N 1739002.8490	E 2204741.6298	ELEV - 576.61
C.P. #101:	N 1739058.0207	E 2203893.4479	ELEV - 579.57
C.P. #102:	N 1739087.3615	E 2203228.7857	ELEV - 576.62
C.P. #103:	N 1739081.5470	E 2202125.2875	ELEV - 578.60
C.P. #104:	N 1745016.3030	E 2202002.7355	ELEV - 566.90
C.P. #105:	N 1744236.2449	E 2202015.2808	ELEV - 574.38
C.P. #106:	N 1743488.2438	E 2202297.8618	ELEV - 584.27
C.P. #107:	N 1743858.4800	E 2200127.7392	ELEV - 584.06
C.P. #109:	N 1742790.0230	E 2197544.2410	ELEV - 570.88
C.P. #110:	N 1744129.1977	E 2202869.8059	ELEV - 591.18
C.P. #111:	N 1744129.0084	E 2202440.7660	ELEV - 590.41
C.P. #112:	N 1743490.0029	E 2203875.2917	ELEV - 586.54
C.P. #113:	N 1743492.4688	E 2204384.9590	ELEV - 586.44
C.P. #114:	N 1742942.3336	E 2200523.2358	ELEV - 592.23
C.P. #116:	N 1742759.4370	E 2199497.5502	ELEV - 590.50
C.P. #117:	N 1744071.6958	E 2203175.4091	ELEV - 592.60
C.P. #118:	N 1736203.6680	E 2202691.7448	ELEV - 581.15
C.P. #119:	N 1739658.7431	E 2202565.3875	ELEV - 578.45
C.P. #121:	N 1739603.8293	E 2204245.1617	ELEV - 579.25
C.P. #122:	N 1783680.7117	E 2204902.5517	ELEV - 588.88



REVISIONS		
NO.	ITEM	DATE

PLOTTING SCALE:	1" = 400'
DRAWN BY:	SPW
CHECKED BY:	
DATE:	MARCH 2006

McCLURE ENGINEERING ASSOCIATES, INC.
 4700 Kennedy Drive
 (309) 792-5300
 East Moline, Illinois 61424
 FAX (309) 792-5874
Design Firm License: Elncls #84-000816
 Copyright 2006 by McClure Engineering Associates, Inc.

SAFETY PLAN & INDEX MAP
 QUAD CITY INTERNATIONAL AIRPORT
 SECURITY FENCE - PHASE III
 Moline, ILLINOIS
 FILE NAME: T:\M106.008\DWG\0606MDL.DWG(OVERALL)
 JOB NUMBER: 01-29-06-008

MCCLURE CONTROL POINTS:

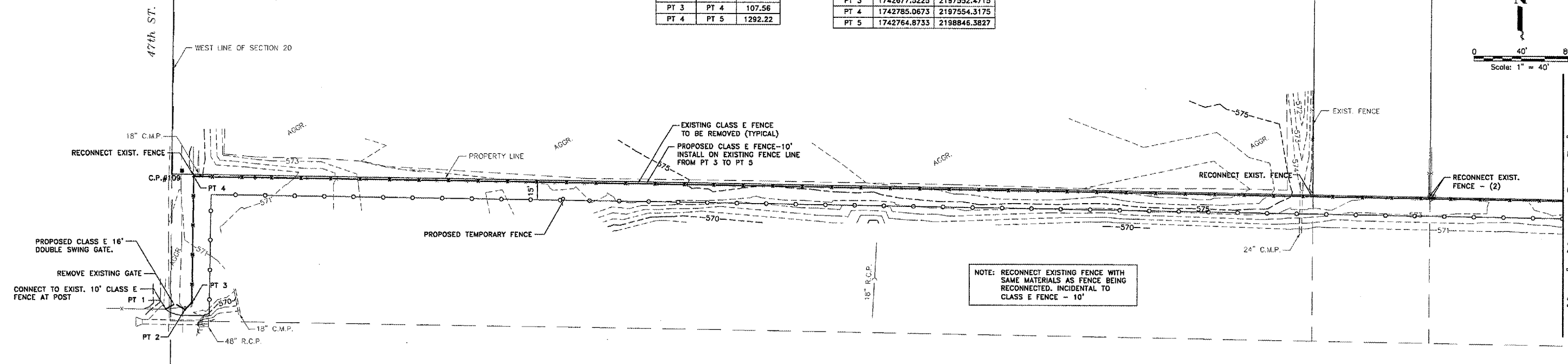
C.P. #109: N 1742790.0230 E 2197544.2410 ELEV - 570.88
 C.P. #116: N 1742758.4370 E 2199497.5502 ELEV - 590.50

QU097

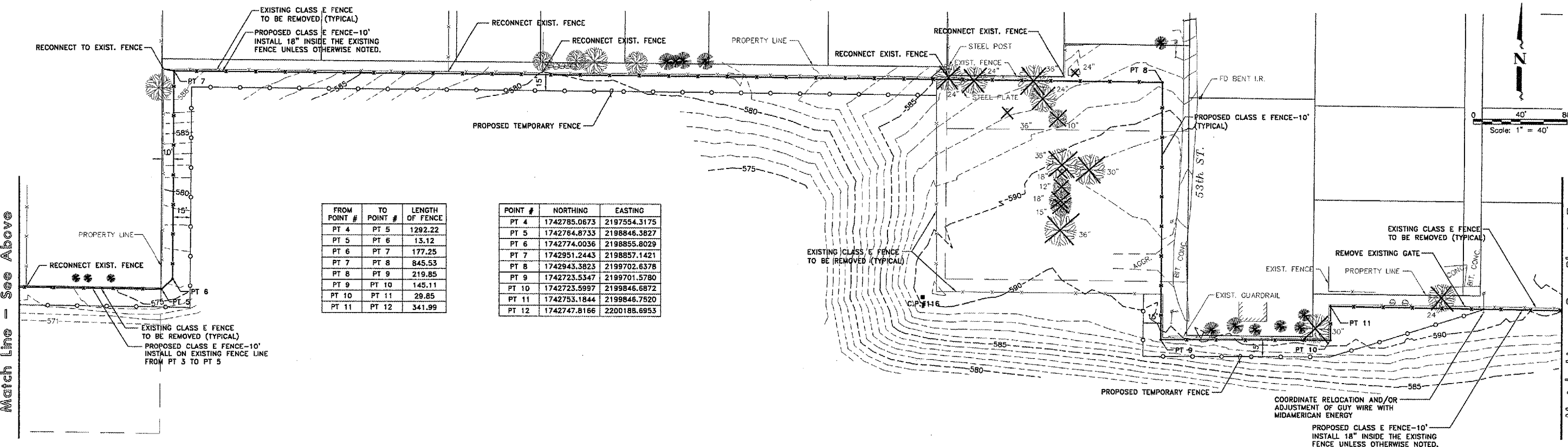
FROM POINT #	TO POINT #	LENGTH OF FENCE
PT 1	PT 2	16' GATE
PT 2	PT 3	8.27
PT 3	PT 4	107.56
PT 4	PT 5	1292.22

POINT #	NORTHING	EASTING
PT 1	1742672.0537	2197530.1940
PT 2	1742671.7734	2197546.5216
PT 3	1742677.5225	2197552.4715
PT 4	1742785.0673	2197554.3175
PT 5	1742764.8733	2198846.3827

0 40' 80'
 Scale: 1" = 40'



Match Line - See Below



Match Line - See Above

Match Line - See Sheet 5

FROM POINT #	TO POINT #	LENGTH OF FENCE
PT 4	PT 5	1292.22
PT 5	PT 6	13.12
PT 6	PT 7	177.25
PT 7	PT 8	845.53
PT 8	PT 9	219.85
PT 9	PT 10	145.11
PT 10	PT 11	29.85
PT 11	PT 12	341.99

POINT #	NORTHING	EASTING
PT 4	1742785.0673	2197554.3175
PT 5	1742764.8733	2198846.3827
PT 6	1742774.0036	2198855.8029
PT 7	1742951.2443	2198857.1421
PT 8	1742943.3823	2199702.6378
PT 9	1742723.5347	2199701.5780
PT 10	1742723.5997	2199846.6872
PT 11	1742753.1844	2199846.7520
PT 12	1742747.8166	2200188.6953



REVISIONS		
NO.	ITEM	DATE

PLOTTING SCALE: 1" = 40'
 DRAWN BY: SPK
 CHECKED BY:
 DATE: MARCH 2006

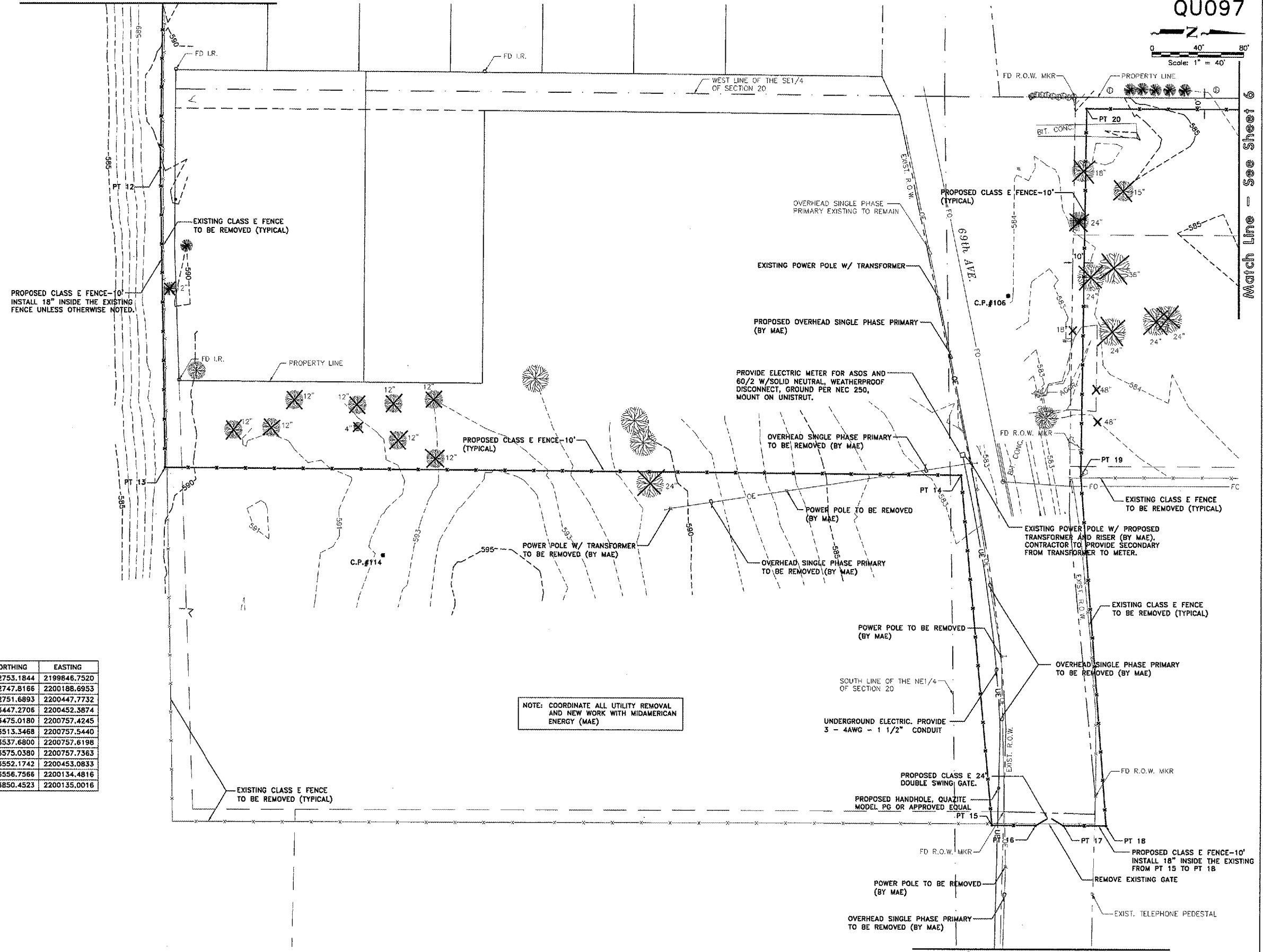
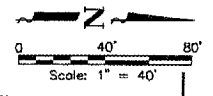
McCLURE ENGINEERING ASSOCIATES, INC.
 4700 Kennedy Drive
 (309) 792-9350
 East Moline, Illinois 61244
 FAX (309) 792-8874
Design Firm License: #184-000816
 Copyright 2006 by McClure Engineering Associates, Inc.

GENERAL CONSTRUCTION PLAN
 QUAD CITY INTERNATIONAL AIRPORT
 SECURITY FENCE - PHASE III
 MOLINE, ILLINOIS
 FILE NAME: T:\M0106.DWG\060808MOL.DWG(C01)
 JOB NUMBER: 01-29-06-008

MCCLURE CONTROL POINTS:
 C.P. #106: N 1743488.2438 E 2200297.8618 ELEV - 584.27
 C.P. #114: N 1742942.3336 E 2200523.2358 ELEV - 592.23

Match Line - See Sheet 4

QU097



Match Line - See Sheet 6

FROM POINT #	TO POINT #	LENGTH OF FENCE
PT 11	PT 12	341.99
PT 12	PT 13	259.11
PT 13	PT 14	695.60
PT 14	PT 15	306.30
PT 15	PT 16	38.33
PT 16	PT 17	24' GATE
PT 17	PT 18	37.36
PT 18	PT 19	305.51
PT 19	PT 20	318.63
PT 20	PT 21	293.70

POINT #	NORTHING	EASTING
PT 11	1742753.1844	2199846.7520
PT 12	1742747.8166	2200188.6953
PT 13	1742751.6893	2200447.7732
PT 14	1743447.2706	2200452.3874
PT 15	1743475.0180	2200757.4245
PT 16	1743513.3468	2200757.5440
PT 17	1743537.6800	2200757.6198
PT 18	1743575.0380	2200757.7363
PT 19	1743552.1742	2200453.0833
PT 20	1743556.7566	2200134.4816
PT 21	1743850.4523	2200135.0016

NOTE: COORDINATE ALL UTILITY REMOVAL AND NEW WORK WITH MIDAMERICAN ENERGY (MAE)

Match Line - See Sheet 15

QUAD CITY INTERNATIONAL AIRPORT
Moline, IL



REVISIONS		
NO.	ITEM	DATE

PLOTTING SCALE: 1" = 40'
 DRAWN BY: SPW
 CHECKED BY:
 DATE: MARCH 2006

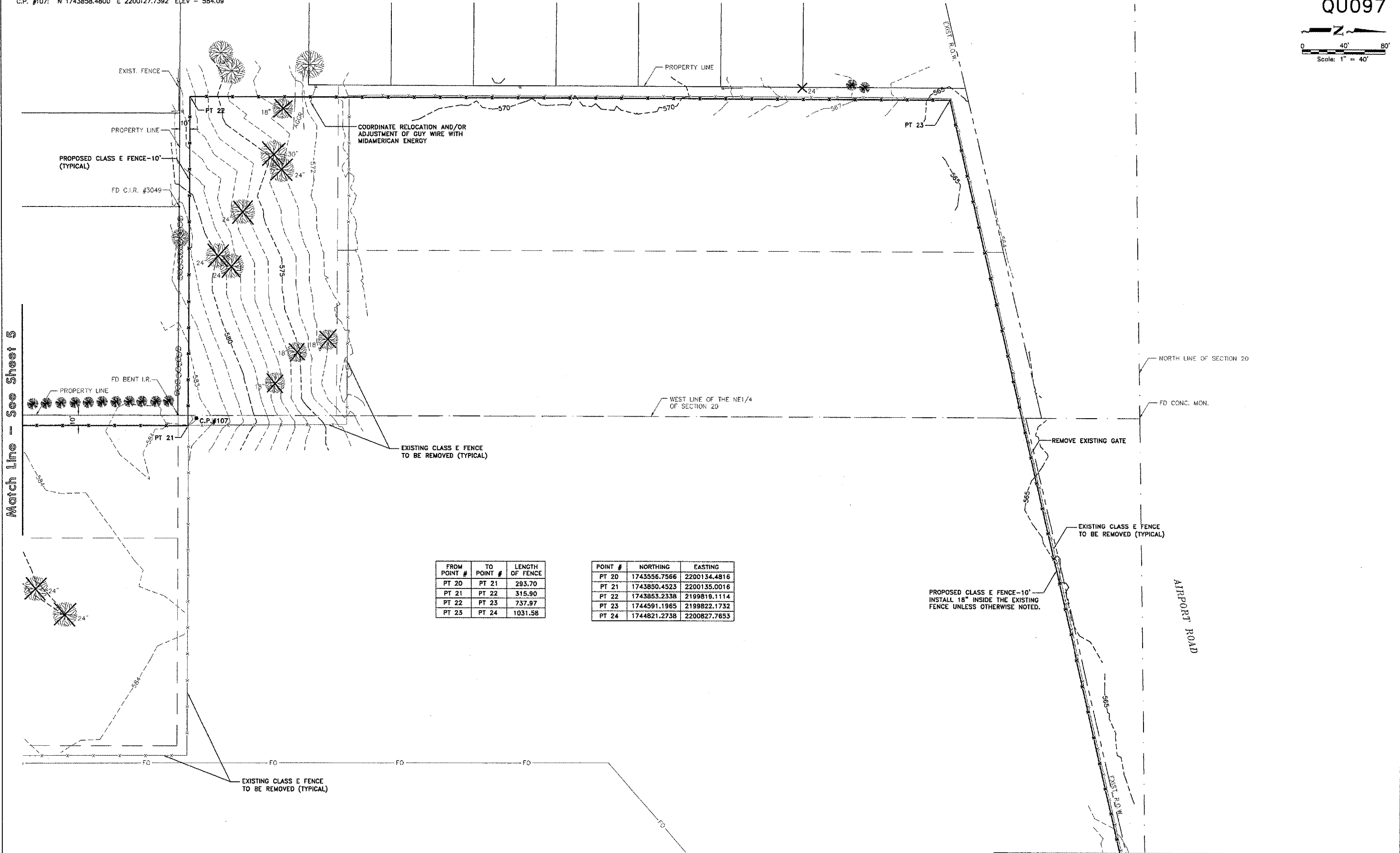
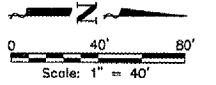
McCLURE ENGINEERING ASSOCIATES, INC.
 4700 Kennedy Drive East Moline, Illinois 61224
 (309) 792-5350 FAX (309) 792-5374
Design Firm License: Illinois #184-000616 Copyright 2006 by McClure Engineering Associates, Inc.

GENERAL CONSTRUCTION PLAN
 QUAD CITY INTERNATIONAL AIRPORT
 SECURITY FENCE - PHASE III
 MOLINE, ILLINOIS
 FILE NAME: T:\M0106.008\DWG\06008MDL.DWG(C02)
 JOB NUMBER: 01-29-06-008

SHEET NO.
5
 OF 17

McCLURE CONTROL POINTS:
 C.P. #107: N 1743858.4800 E 2200127.7392 ELEV - 584.09

QU097



FROM POINT #	TO POINT #	LENGTH OF FENCE
PT 20	PT 21	293.70
PT 21	PT 22	315.90
PT 22	PT 23	737.97
PT 23	PT 24	1031.58

POINT #	NORTHING	EASTING
PT 20	1743556.7566	2200134.4816
PT 21	1743850.4523	2200135.0016
PT 22	1743853.2338	2199819.1114
PT 23	1744591.1965	2199822.1732
PT 24	1744821.2738	2200827.7653

PROPOSED CLASS E FENCE-10'
 INSTALL 18" INSIDE THE EXISTING
 FENCE UNLESS OTHERWISE NOTED.

Match Line - See Sheet 5

Match Line - See Sheet 7

QUAD CITY INTERNATIONAL AIRPORT
 Moline, IL



REVISIONS		
NO.	ITEM	DATE

PLOTTING SCALE: 1" = 40'
 DRAWN BY: SPW
 CHECKED BY:
 DATE: MARCH 2006

McCLURE ENGINEERING ASSOCIATES, INC.
 4700 Kennedy Drive
 (309) 792-8350
 East Moline, Illinois 61724
 FAX (309) 792-8874
Design Firm License: Illinois #184-000816
 Copyright 2006 by McClure Engineering Associates, Inc.

GENERAL CONSTRUCTION PLAN
 QUAD CITY INTERNATIONAL AIRPORT
 SECURITY FENCE - PHASE III
 Moline, Illinois
 FILE NAME: J:\MOT06.008\DWG\06008MCL.DWG\CO3
 JOB NUMBER: 01-29-06-008

SHEET NO.
6
 OF 17

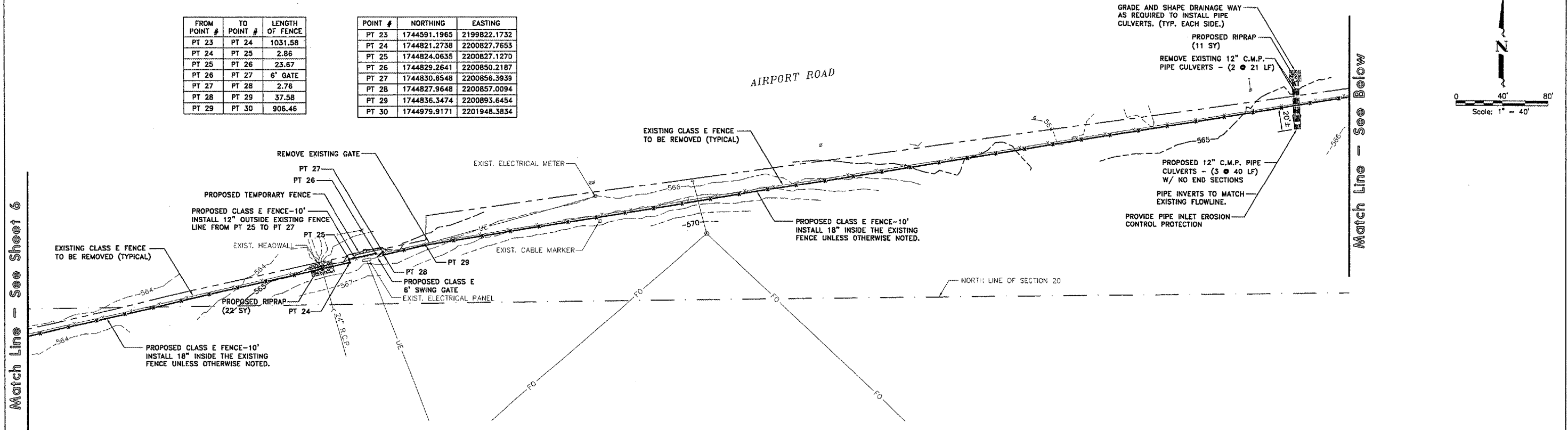
MCCLURE CONTROL POINTS:

C.P. #104: N 1745016.3030 E 2202002.7355 ELEV - 566.90
 C.P. #105: N 1744236.2449 E 2202015.2608 ELEV - 574.38

QU097

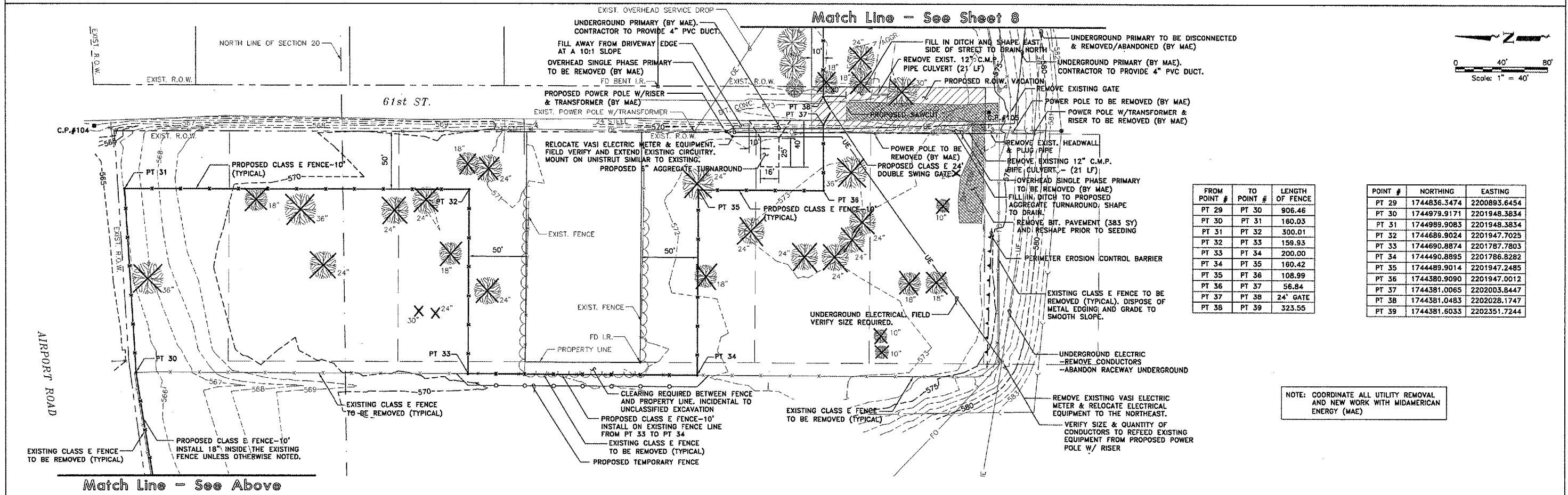
FROM POINT #	TO POINT #	LENGTH OF FENCE
PT 23	PT 24	1031.58
PT 24	PT 25	2.86
PT 25	PT 26	23.67
PT 26	PT 27	6' GATE
PT 27	PT 28	2.76
PT 28	PT 29	37.58
PT 29	PT 30	906.46

POINT #	NORTHING	EASTING
PT 23	1744591.1965	2199822.1732
PT 24	1744821.2738	2200827.7653
PT 25	1744824.0635	2200827.1270
PT 26	1744829.2641	2200850.2187
PT 27	1744830.6548	2200856.3939
PT 28	1744827.9648	2200857.0094
PT 29	1744836.3474	2200893.6454
PT 30	1744979.9171	2201948.3834



Match Line - See Sheet 6

Match Line - See Below



Match Line - See Above

FROM POINT #	TO POINT #	LENGTH OF FENCE
PT 29	PT 30	906.46
PT 30	PT 31	180.03
PT 31	PT 32	300.01
PT 32	PT 33	159.93
PT 33	PT 34	200.00
PT 34	PT 35	180.42
PT 35	PT 36	108.99
PT 36	PT 37	56.84
PT 37	PT 38	24' GATE
PT 38	PT 39	323.55

POINT #	NORTHING	EASTING
PT 29	1744836.3474	2200893.6454
PT 30	1744979.9171	2201948.3834
PT 31	1744989.9083	2201948.3834
PT 32	1744689.9024	2201947.7025
PT 33	1744690.8874	2201787.7803
PT 34	1744490.8895	2201786.8282
PT 35	1744489.9014	2201947.2485
PT 36	1744380.9090	2201947.0012
PT 37	1744381.0065	2202003.8447
PT 38	1744381.0483	2202028.1747
PT 39	1744381.6033	2202351.7244

NOTE: COORDINATE ALL UTILITY REMOVAL AND NEW WORK WITH MIDAMERICAN ENERGY (MAE)

QUAD CITY INTERNATIONAL AIRPORT
 Motine, IL



REVISIONS		
NO.	ITEM	DATE

PLOTTING SCALE: 1" = 40'
 DRAWN BY: SPM
 CHECKED BY:
 DATE: MARCH 2006

McCLURE ENGINEERING ASSOCIATES, INC.
 4200 Kennedy Drive
 (308) 792-5350
 Design Firm License: Illinois #184-00816
 Copyright 2006 by McClure Engineering Associates, Inc.

GENERAL CONSTRUCTION PLAN
 QUAD CITY INTERNATIONAL AIRPORT
 SECURITY FENCE - PHASE III
 Moline, Illinois
 FILE NAME: T:\M0106.DWG\DWG\0606MOL.DWG\CD4
 JOB NUMBER: 01-29-06-008

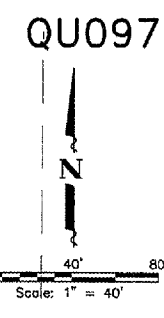
SHEET NO.
7
 OF 17

MCCLURE CONTROL POINTS:

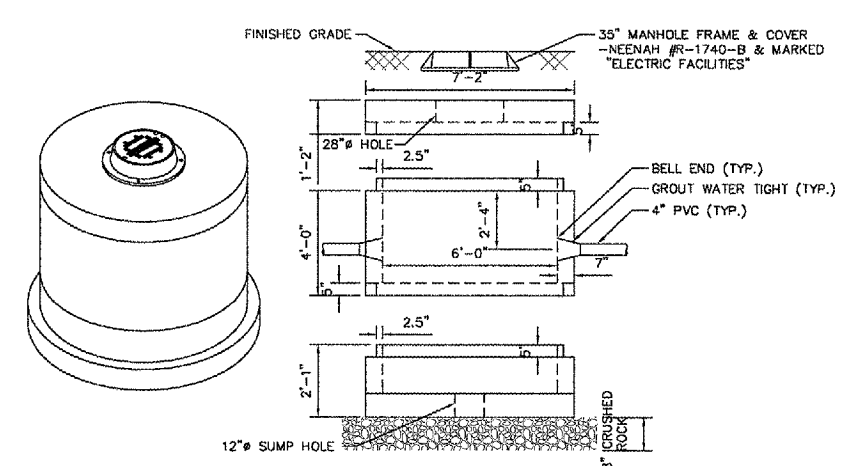
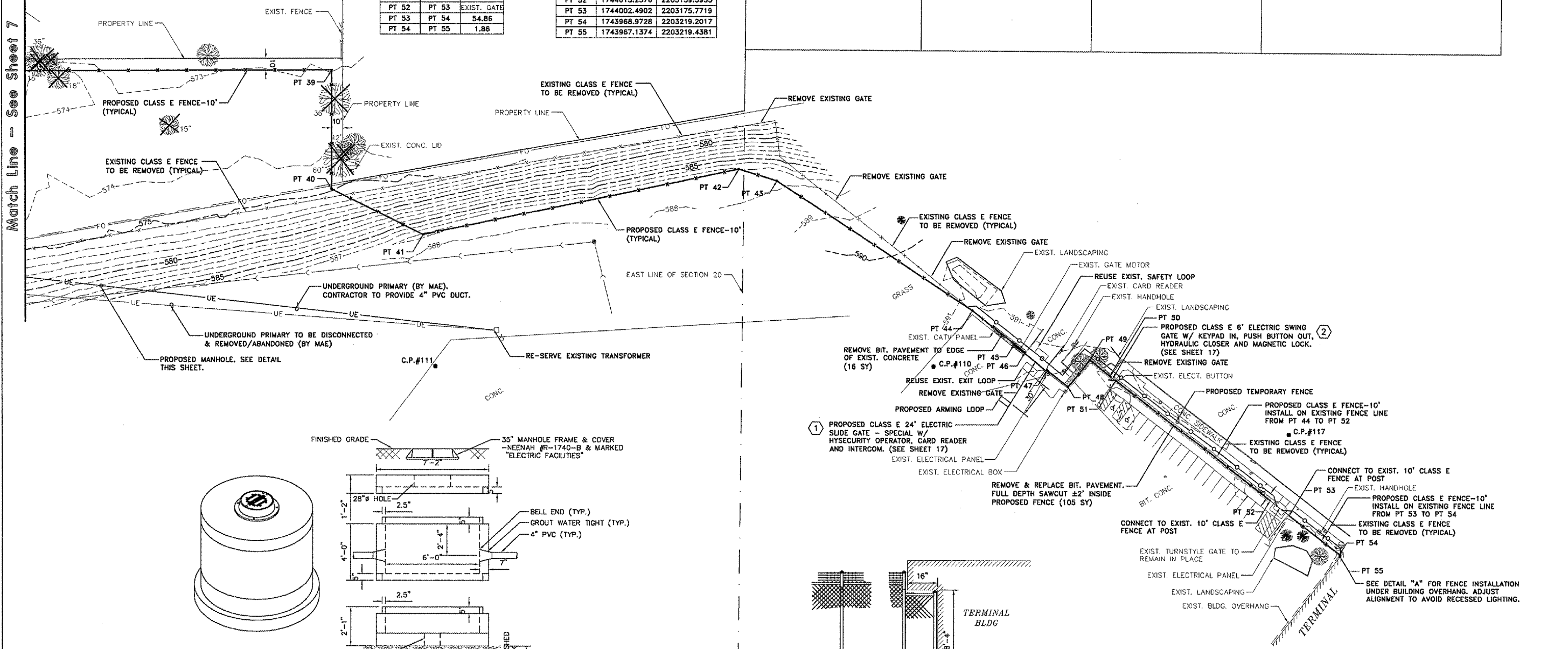
C.P. #110: N 1744129.1977 E 2202869.8059 ELEV - 591.18
 C.P. #111: N 1744129.0084 E 2202440.7660 ELEV - 590.41
 C.P. #117: N 1744071.6958 E 2203175.4091 ELEV - 592.60

FROM POINT #	TO POINT #	LENGTH OF FENCE
PT 38	PT 39	323.55
PT 39	PT 40	101.56
PT 40	PT 41	88.21
PT 41	PT 42	277.63
PT 42	PT 43	34.18
PT 43	PT 44	200.77
PT 44	PT 45	46.04
PT 45	PT 46	11.67
PT 46	PT 47	24' GATE
PT 47	PT 48	22.75
PT 48	PT 49	29.40
PT 49	PT 50	21.53
PT 50	PT 51	6' GATE
PT 51	PT 52	167.93
PT 52	PT 53	EXIST. GATE
PT 53	PT 54	54.86
PT 54	PT 55	1.86

POINT #	NORTHING	EASTING
PT 38	1744381.0483	2202028.1747
PT 39	1744381.6033	2202351.7244
PT 40	1744280.0451	2202351.4939
PT 41	1744240.7695	2202430.4813
PT 42	1744296.9015	2202702.3616
PT 43	1744287.0215	2202735.0976
PT 44	1744177.1443	2202903.1290
PT 45	1744148.6882	2202939.3121
PT 46	1744141.4669	2202948.4845
PT 47	1744126.4336	2202967.6185
PT 48	1744112.3717	2202985.5013
PT 49	1744134.8990	2203004.3989
PT 50	1744121.7403	2203021.4459
PT 51	1744117.8706	2203026.4590
PT 52	1744015.2576	2203159.3933
PT 53	1744002.4902	2203175.7719
PT 54	1743968.9728	2203219.2017
PT 55	1743967.1374	2203219.4381

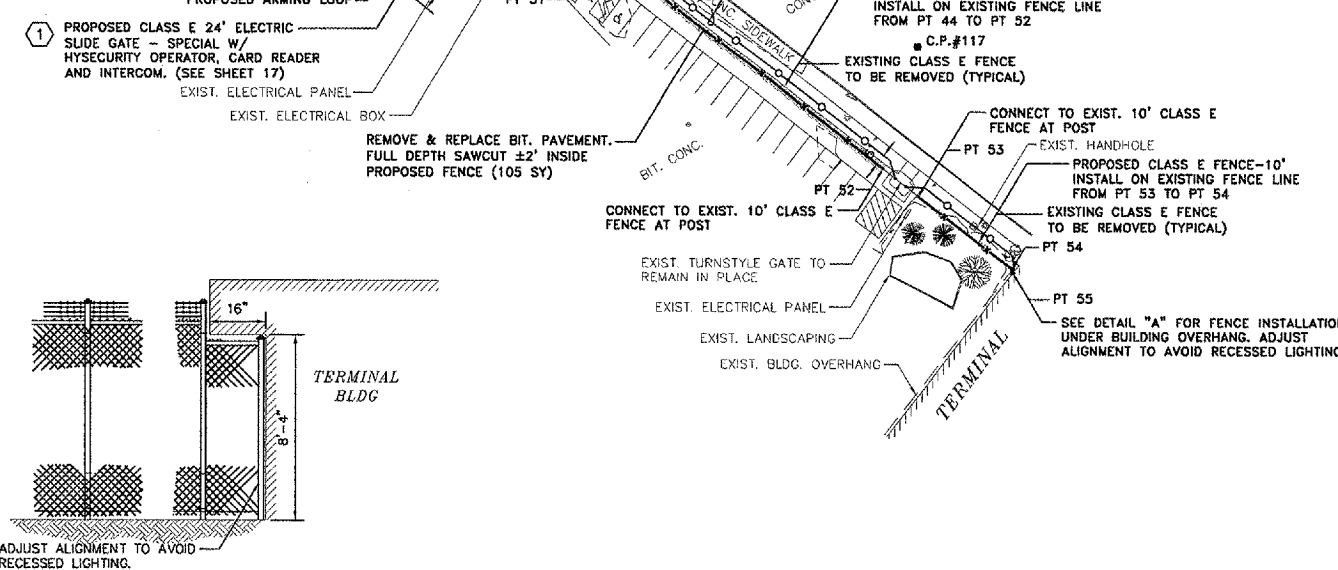


NOTE: COORDINATE ALL UTILITY REMOVAL AND NEW WORK WITH MIDAMERICAN ENERGY (MAE)



NOTES:
 1. PROVIDE PULLING EYE OPPOSITE EACH CONDUIT ENTRY. EYE SHALL BE 1"x12" SHOULDER EYE BOLT SUPPORTED WITH A PULLING EYE PLATE 8"x8"x12" ON THE OUTSIDE OF THE MANHOLE.
 2. INSTALL ALL CONDUITS WITH A SLIGHT SLOPE, SO THAT ANY EXCESS WATER WILL DRAIN TOWARD THE MANHOLE.

MANHOLE DETAIL
NOT TO SCALE



DETAIL "A"
NOT TO SCALE



REVISIONS		
NO.	ITEM	DATE

PLOTTING SCALE: 1" = 40'
 DRAWN BY: SPW
 CHECKED BY:
 DATE: MARCH 2005

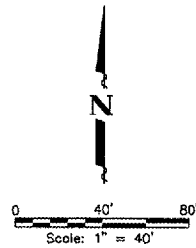
McCLURE ENGINEERING ASSOCIATES, INC.
 4700 Kennedy Drive, Moline, Illinois 61704
 (309) 792-3350 Fax (309) 792-8874
 Design Firm License: Illinois #184-000816
 Copyright © 2005 by McClure Engineering Associates, Inc.

GENERAL CONSTRUCTION PLAN
 QUAD CITY INTERNATIONAL AIRPORT
 SECURITY FENCE - PHASE III
 Moline, ILLINOIS
 FILE NAME: R:\M0106.008\DWG\06080MOL.DWG(C05)
 JOB NUMBER: 01-29-05-008

MCCLURE CONTROL POINTS:

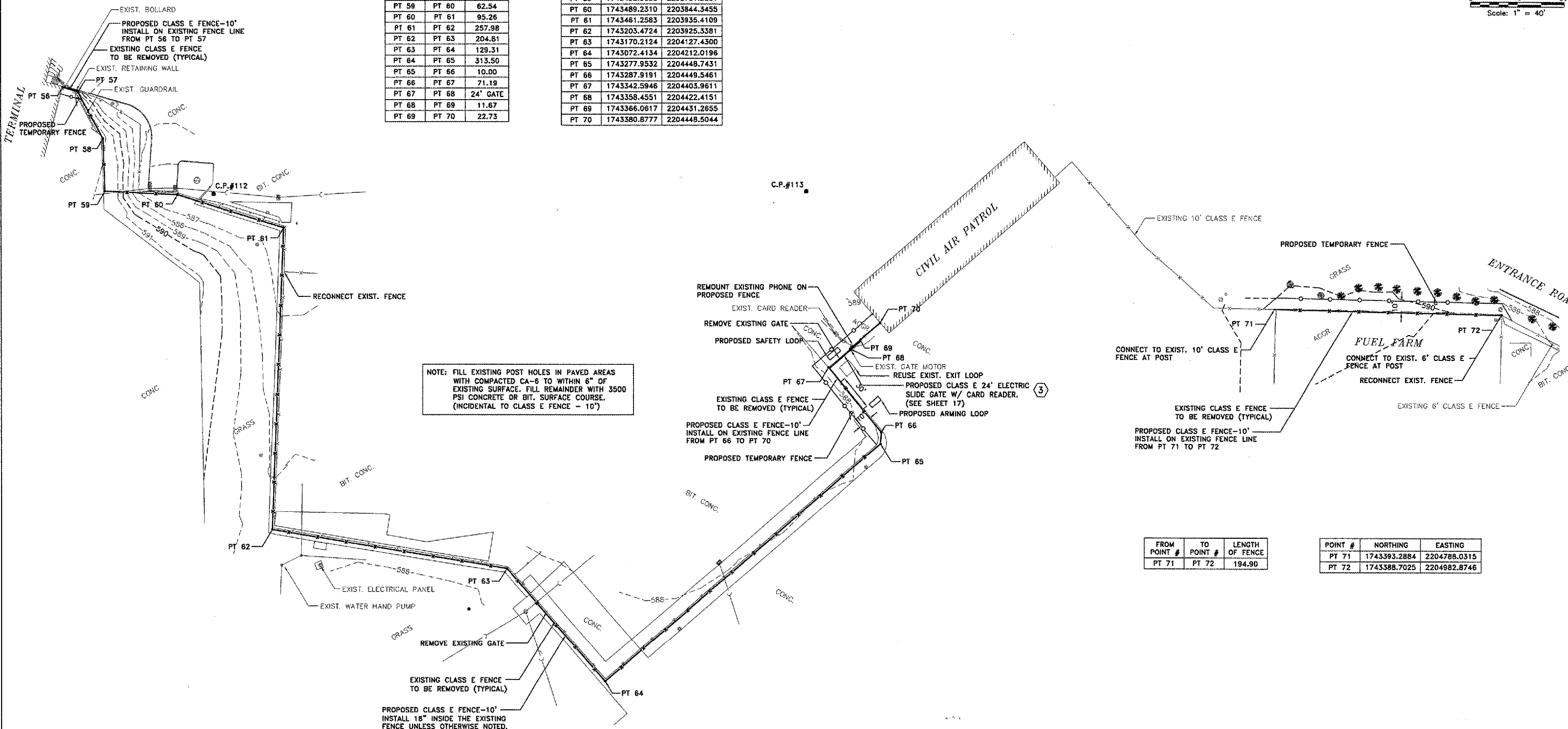
C.P. #112: N 1743490.0029 E 2203875.2917 ELEV - 586.54
 C.P. #113: N 1743492.4686 E 2204384.9590 ELEV - 586.44
 C.P. #122: N 1743680.7117 E 2204902.5517 ELEV - 588.88

QU097



FROM POINT #	TO POINT #	LENGTH OF FENCE
PT 56	PT 57	13.78
PT 57	PT 58	45.02
PT 58	PT 59	44.69
PT 59	PT 60	62.54
PT 60	PT 61	95.26
PT 61	PT 62	257.98
PT 62	PT 63	204.81
PT 63	PT 64	129.31
PT 64	PT 65	313.50
PT 65	PT 66	10.00
PT 66	PT 67	71.19
PT 67	PT 68	24' GATE
PT 68	PT 69	11.67
PT 69	PT 70	22.73

POINT #	NORTHING	EASTING
PT 56	1743580.6447	2203745.6066
PT 57	1743576.6283	2203758.7845
PT 58	1743537.0270	2203780.1895
PT 59	1743492.3658	2203781.8891
PT 60	1743489.2310	2203844.3455
PT 61	1743461.2583	2203935.4109
PT 62	1743203.4724	2203925.3381
PT 63	1743170.2124	2204127.4300
PT 64	1743072.4134	2204212.0196
PT 65	1743277.9532	2204448.7431
PT 66	1743287.9191	2204449.5461
PT 67	1743342.5946	2204403.9611
PT 68	1743358.4551	2204422.4151
PT 69	1743366.0617	2204431.2655
PT 70	1743380.8777	2204448.5044



NOTE: FILL EXISTING POST HOLES IN PAVED AREAS WITH COMPACTED CA-6 TO WITHIN 6" OF EXISTING SURFACE. FILL REMAINDER WITH 3500 PSI CONCRETE OR BIT. SURFACE COURSE. (INCIDENTAL TO CLASS E FENCE - 10')

FROM POINT #	TO POINT #	LENGTH OF FENCE
PT 71	PT 72	194.90

POINT #	NORTHING	EASTING
PT 71	1743393.2884	2204788.0315
PT 72	1743388.7025	2204982.8746

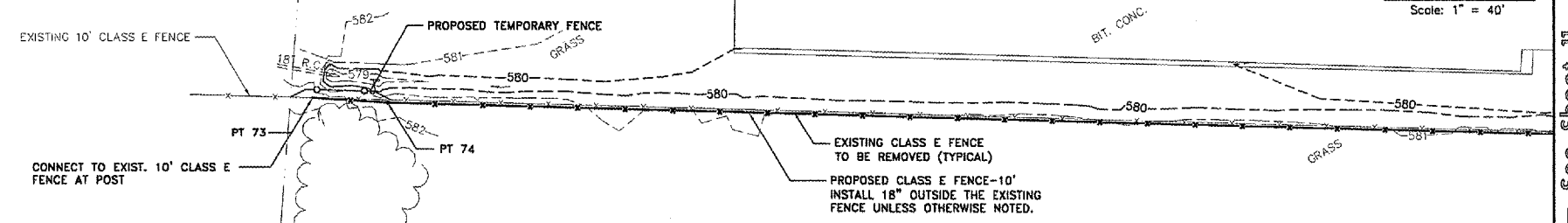
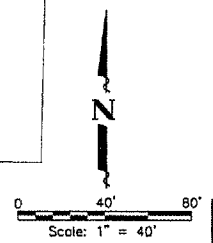


REVISIONS		
NO.	ITEM	DATE

PLOTTING SCALE: 1" = 40'
 DRAWN BY: SPW
 CHECKED BY:
 DATE: MARCH 2006

McCLURE ENGINEERING ASSOCIATES, INC.
 4700 Kennedy Drive
 (309) 792-9350
 East Moline, Illinois 61844
 FAX (309) 792-9394
 Design Firm License: #184-000816
 Copyright 2006 by McClure Engineering Associates, Inc.

GENERAL CONSTRUCTION PLAN
 QUAD CITY INTERNATIONAL AIRPORT
 SECURITY FENCE - PHASE III
 MOLINE, ILLINOIS
 FILE NAME: I:\M0106.008\DWG\06008MCL.DWG(C06)
 JOB NUMBER: 01-29-06-008



FROM POINT #	TO POINT #	LENGTH OF FENCE
PT 73	PT 74	40.00
PT 74	PT 75	1587.32

POINT #	NORTHING	EASTING
PT 73	1738189.3426	2201067.5268
PT 74	1738186.8359	2201107.4481
PT 75	1738146.8437	2202694.2624

78TH AVENUE (INDIAN BLUFF ROAD)

Match Line - See Sheet 11

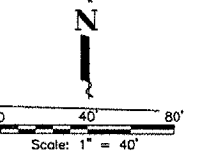
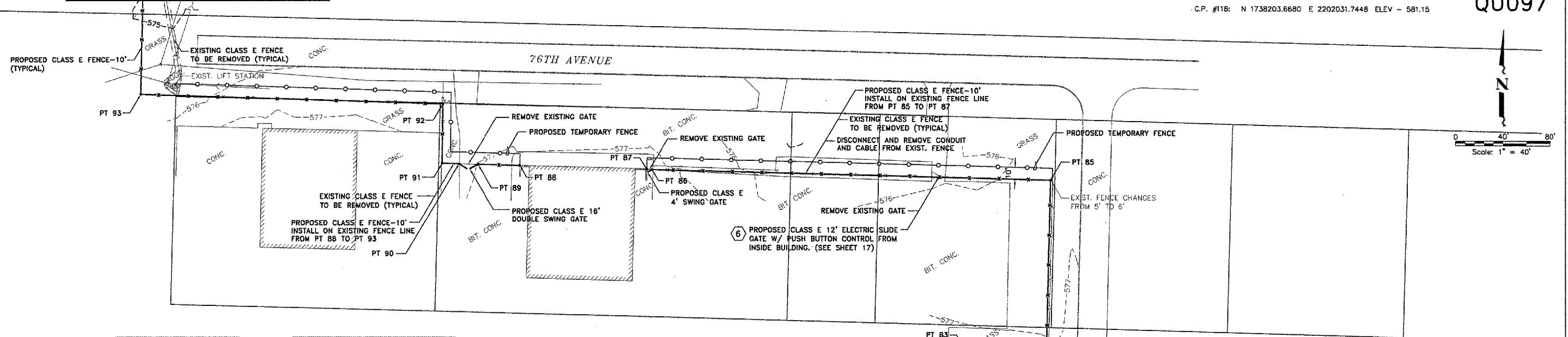


REVISIONS		
NO.	ITEM	DATE

PLOTTING SCALE: 1" = 40'
DRAWN BY: SPW
CHECKED BY:
DATE: MARCH 2006

McCLURE ENGINEERING ASSOCIATES, INC.
4700 Kennedy Drive East Moline, Illinois 61244
(309) 792-9300 FAX (309) 792-9874
Design Firm License: Illinois #184-000816
Copyright 2006 by McClure Engineering Associates, Inc.

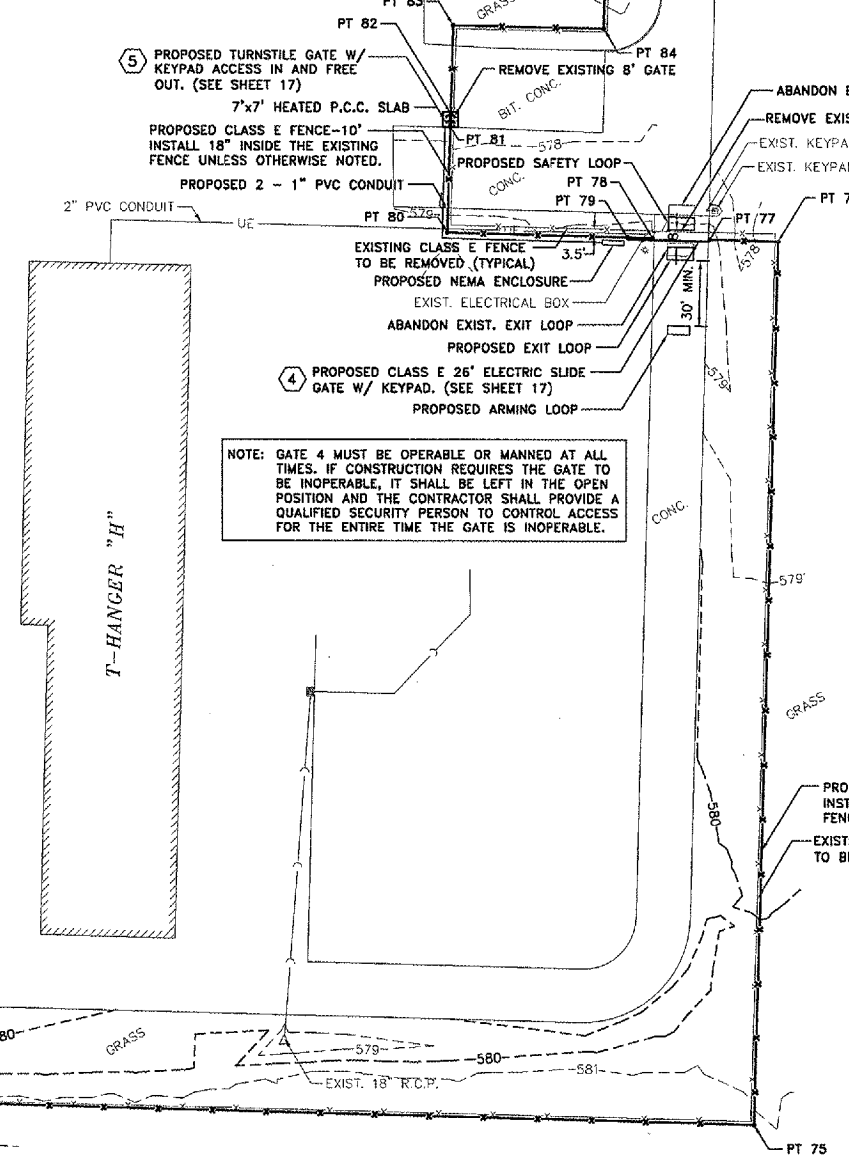
GENERAL CONSTRUCTION PLAN
QUAD CITY INTERNATIONAL AIRPORT
SECURITY FENCE - PHASE III
MOLINE, ILLINOIS
FILE NAME: 7\M0106.008\DWG\06008MOL.DWG(C07)
JOB NUMBER: 01-29-06-008



FROM POINT #	TO POINT #	LENGTH OF FENCE
PT 88	PT 89	35.63
PT 89	PT 90	16' GATE
PT 90	PT 91	14.25
PT 91	PT 92	50.16
PT 92	PT 93	257.10
PT 93	PT 94	194.10

POINT #	NORTHING	EASTING
PT 88	1738806.7408	2202175.8941
PT 89	1738807.2178	2202123.9484
PT 90	1738808.2178	2202123.9484
PT 91	1738808.6227	2202109.7085
PT 92	1738858.7806	2202110.3746
PT 93	1738866.9680	2201853.4076
PT 94	1739061.0469	2201858.2460

NOTE: FILL EXISTING POST HOLES IN PAVED AREAS WITH COMPACTED CA-6 TO WITHIN 6" OF EXISTING SURFACE. FILL REMAINDER WITH 3500 PSI CONCRETE OR BIT. SURFACE COURSE. (INCIDENTAL TO CLASS E FENCE - 10')



NOTE: GATE 4 MUST BE OPERABLE OR MANNED AT ALL TIMES. IF CONSTRUCTION REQUIRES THE GATE TO BE INOPERABLE, IT SHALL BE LEFT IN THE OPEN POSITION AND THE CONTRACTOR SHALL PROVIDE A QUALIFIED SECURITY PERSON TO CONTROL ACCESS FOR THE ENTIRE TIME THE GATE IS INOPERABLE.

FROM POINT #	TO POINT #	LENGTH OF FENCE
PT 74	PT 75	1587.32
PT 75	PT 76	407.57
PT 76	PT 77	31.61
PT 77	PT 78	26' GATE
PT 78	PT 79	11.67
PT 79	PT 80	83.67
PT 80	PT 81	49.30
PT 81	PT 82	TURNSTILE
PT 82	PT 83	40.90
PT 83	PT 84	69.84
PT 84	PT 85	142.34
PT 85	PT 86	339.52
PT 86	PT 87	4' GATE

POINT #	NORTHING	EASTING
PT 74	1738186.8359	2201107.4481
PT 75	1738146.8437	2202694.2624
PT 76	1738554.2797	2202704.8535
PT 77	1738555.0588	2202673.2510
PT 78	1738555.7076	2202646.9290
PT 79	1738555.9954	2202635.2625
PT 80	1738558.0576	2202551.6188
PT 81	1738607.3351	2202553.0601
PT 82	1738613.1424	2202553.2389
PT 83	1738654.0227	2202554.4247
PT 84	1738652.6795	2202624.2470
PT 85	1738794.9741	2202627.8400
PT 86	1738803.1810	2202288.4230
PT 87	1738803.3527	2202284.0962

Match Line - See Sheet 10



REVISIONS		
NO.	ITEM	DATE

DRAWN BY:	SPM
CHECKED BY:	
DATE:	MARCH 2006

McCLURE ENGINEERING ASSOCIATES, INC.
4700 Kennedy Drive
(309) 792-9390
East Moline, Illinois 61244
FAX (309) 792-8874
Design Firm License: Illinois #184-000816
Copyright 2006 by McClure Engineering Associates, Inc.

GENERAL CONSTRUCTION PLAN
QUAD CITY INTERNATIONAL AIRPORT
SECURITY FENCE - PHASE III
MOLINE, ILLINOIS
FILE NAME: T:\M0106.00B\DWG\060808NDL.DWG(C08)
JOB NUMBER: 01-29-06-008

MCCLURE CONTROL POINTS:

C.P. #103: N 1739061.5470 E 2202125.2675 ELEV - 578.60
 C.P. #119: N 1739658.7431 E 2202565.3875 ELEV - 578.45

FROM POINT #	TO POINT #	LENGTH OF FENCE
PT 107	PT 108	179.58
PT 108	PT 109	155.73
PT 109	PT 109A	112.54
PT 109A	PT 110	163.85
PT 110	PT 111	13.36
PT 111	PT 112	9.67
PT 112	PT 113	16' GATE
PT 113	PT 114	27.79
PT 114	PT 115	4' GATE
PT 115	PT 116	6.26

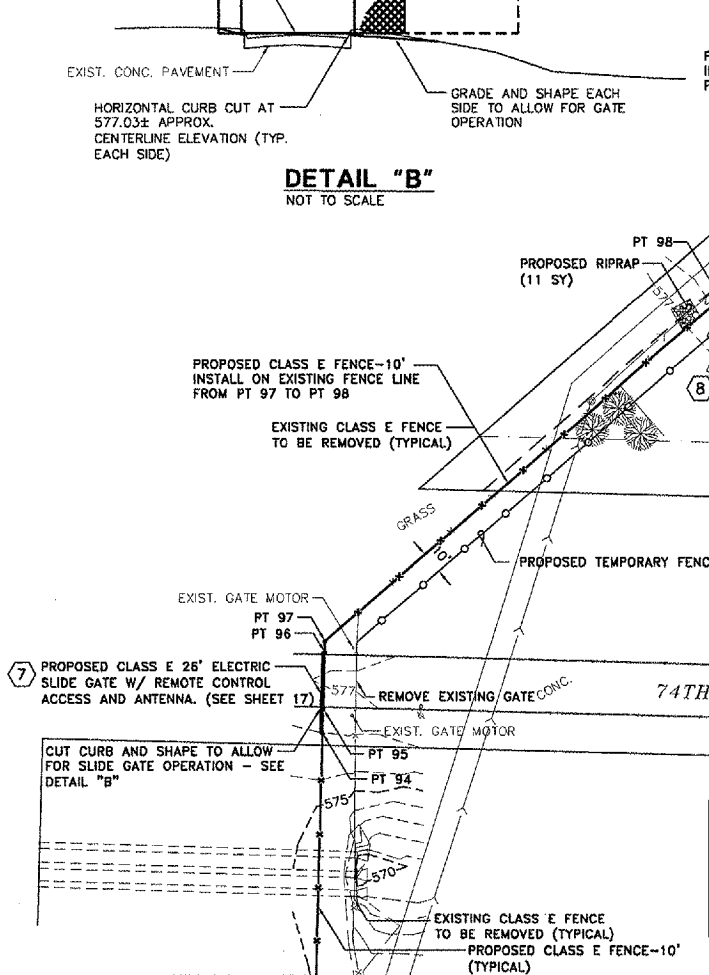
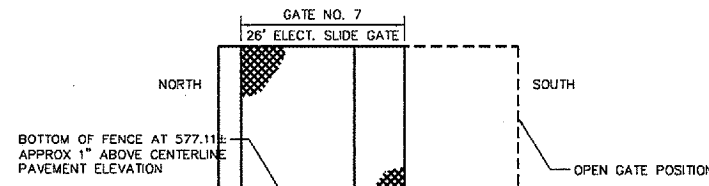
POINT #	NORTHING	EASTING
PT 107	1739453.7750	2202456.2889
PT 108	1739633.3008	2202460.7845
PT 109	1739736.3015	2202577.5692
PT 109A	1739733.4958	2202690.0769
PT 110	1739729.4110	2202853.8734
PT 111	1739716.0513	2202853.6440
PT 112	1739706.3827	2202853.4780
PT 113	1739690.0551	2202853.1977
PT 114	1739662.2717	2202852.7207
PT 115	1739657.9394	2202852.6463
PT 116	1739651.6783	2202852.5388

FROM POINT #	TO POINT #	LENGTH OF FENCE
PT 99	PT 100	4.71
PT 100	PT 101	5' GATE
PT 101	PT 102	19.09
PT 102	PT 103	16.25
PT 103	PT 104	9.67
PT 104	PT 105	16' GATE
PT 105	PT 106	13.73

POINT #	NORTHING	EASTING
PT 99	1739285.4959	2202176.6912
PT 100	1739281.9695	2202179.8012
PT 101	1739277.9720	2202183.3266
PT 102	1739290.8462	2202197.4202
PT 103	1739290.7350	2202213.6687
PT 104	1739290.6688	2202223.3385
PT 105	1739290.5571	2202239.6714
PT 106	1739290.4631	2202253.4016

FROM POINT #	TO POINT #	LENGTH OF FENCE
PT 109A	PT 154	148.37
PT 154	PT 155	25.00
PT 155	PT 156	54.00

POINT #	NORTHING	EASTING
PT 109A	1739733.4958	2202690.0769
PT 154	1739585.1750	2202686.3793
PT 155	1739584.5520	2202711.3715
PT 156	1739530.5687	2202710.0257



FROM POINT #	TO POINT #	LENGTH OF FENCE
PT 93	PT 94	194.10
PT 94	PT 95	11.67
PT 95	PT 96	26' GATE
PT 96	PT 97	5.31
PT 97	PT 98	242.67

POINT #	NORTHING	EASTING
PT 93	1738866.9680	2201853.4076
PT 94	1739061.0469	2201858.2460
PT 95	1739072.7133	2201856.5369
PT 96	1739099.0322	2201859.1930
PT 97	1739104.3365	2201859.3252
PT 98	1739262.5489	2202043.3297

FROM POINT #	TO POINT #	LENGTH OF FENCE
PT 117	PT 118	8.94
PT 118	PT 119	20' GATE
PT 119	PT 120	9.67
PT 120	PT 121	17.97
PT 122	PT 123	261.12

POINT #	NORTHING	EASTING
PT 117	1739207.9553	2202916.6894
PT 118	1739199.0176	2202916.4686
PT 119	1739178.6938	2202915.9666
PT 120	1739169.0267	2202915.7279
PT 121	1739151.0625	2202915.2841
PT 122	1739144.8655	2203176.3289

QUAD CITY INTERNATIONAL AIRPORT
 Moline, IL



REVISIONS		
NO.	ITEM	DATE

PLOTTING SCALE: 1" = 40'
DRAWN BY: SPM
CHECKED BY:
DATE: MARCH 2006

McCLURE ENGINEERING ASSOCIATES, INC.
 4700 Kennedy Drive
 (309) 792-9350
 East Moline, Illinois 61244
 FAX (309) 792-6974
 Design Firm License: Illinois #184-000616
 Copyright 2006 by McClure Engineering Associates, Inc.

GENERAL CONSTRUCTION PLAN
 QUAD CITY INTERNATIONAL AIRPORT
 SECURITY FENCE - PHASE III
 MOLINE, ILLINOIS
 FILE NAME: F:\M0106.008\DWG\06008MDL.DWG(C09)
 JOB NUMBER: 01-29-06-008

SHEET NO.
12
 OF 17

Match Line - See Sheet 13

MCCLURE CONTROL POINTS:

C.P. #101: N 1739058.0207 E 2203893.4479 ELEV - 579.57
 C.P. #102: N 1739087.3615 E 2203228.7857 ELEV - 576.62
 C.P. #121: N 1739803.8293 E 2204245.1617 ELEV - 579.25

QU097

FROM POINT #	TO POINT #	LENGTH OF FENCE
PT 121	PT 122	261.12
PT 122	PT 123	16' GATE
PT 123	PT 124	114.50
PT 124	PT 125	78.51
PT 125	PT 126	107.03
PT 126	PT 127	20.36
PT 127	PT 128	9.67
PT 128	PT 129	20' GATE
PT 129	PT 130	8.75
PT 130	PT 131	22.63

POINT #	NORTHING	EASTING
PT 121	1739151.0625	2202915.2841
PT 122	1739144.8655	2203176.3289
PT 123	1739144.4779	2203192.6576
PT 124	1739141.7606	2203307.1254
PT 125	1739220.2181	2203309.8848
PT 126	1739222.6951	2203202.8791
PT 127	1739243.0524	2203203.0606
PT 128	1739252.7187	2203203.1488
PT 129	1739273.0512	2203203.3282
PT 130	1739282.7982	2203203.4062
PT 131	1739281.0752	2203226.0252

FROM POINT #	TO POINT #	LENGTH OF FENCE
PT 132	PT 133	301.86
PT 133	PT 134	16' GATE
PT 134	PT 135	10.00
PT 135	PT 136	4' GATE
PT 136	PT 137	55.11
PT 137	PT 138	395.08
PT 138	PT 139	38.49

POINT #	NORTHING	EASTING
PT 132	1739136.8800	2203448.4269
PT 133	1739129.2463	2203750.1930
PT 134	1739128.8442	2203766.5180
PT 135	1739128.4979	2203776.4968
PT 136	1739128.7262	2203780.8701
PT 137	1739127.1342	2203835.9349
PT 138	1739522.0720	2203846.4601
PT 139	1739521.3971	2203884.9471

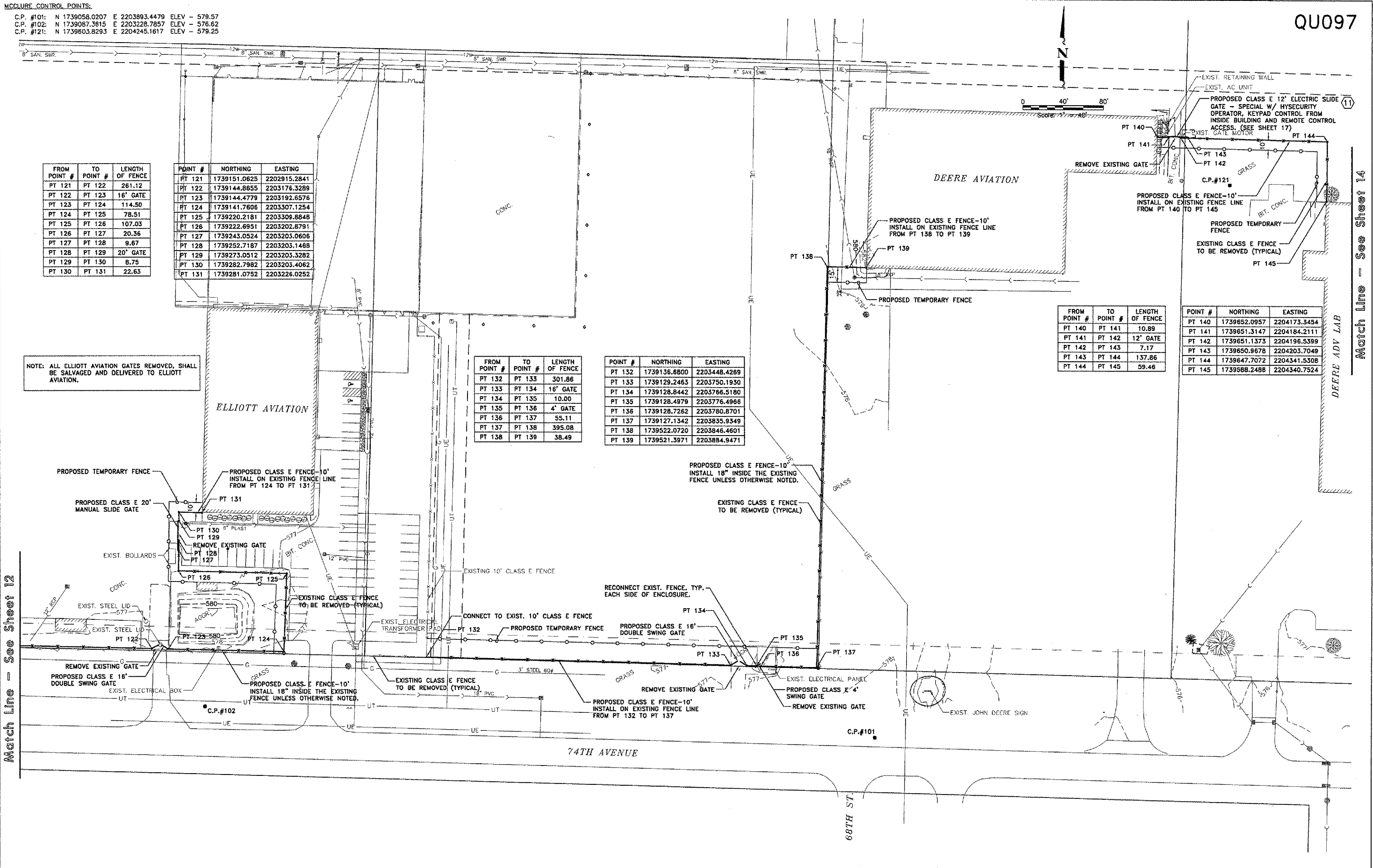
FROM POINT #	TO POINT #	LENGTH OF FENCE
PT 140	PT 141	10.89
PT 141	PT 142	12' GATE
PT 142	PT 143	7.17
PT 143	PT 144	137.86
PT 144	PT 145	59.46

POINT #	NORTHING	EASTING
PT 140	1739652.0957	2204173.3454
PT 141	1739651.3147	2204184.2111
PT 142	1739651.1373	2204196.5399
PT 143	1739650.9678	2204203.7049
PT 144	1739647.7072	2204341.5508
PT 145	1739588.2488	2204340.7524

NOTE: ALL ELLIOTT AVIATION GATES REMOVED, SHALL BE SALVAGED AND DELIVERED TO ELLIOTT AVIATION.

Match Line - See Sheet 12

Match Line - See Sheet 14



QUAD CITY INTERNATIONAL AIRPORT
 Moline, IL



REVISIONS		
NO.	ITEM	DATE

PLOTTING SCALE: 1" = 40'
 DRAWN BY: SPM
 CHECKED BY:
 DATE: MARCH 2006

McCLURE ENGINEERING ASSOCIATES, INC.
 4700 Kennedy Drive
 East Moline, Illinois 61704
 (309) 792-5300 Fax (309) 792-5374
 Design Firm License #184-000816
 Copyright 2006 by McClure Engineering Associates, Inc.

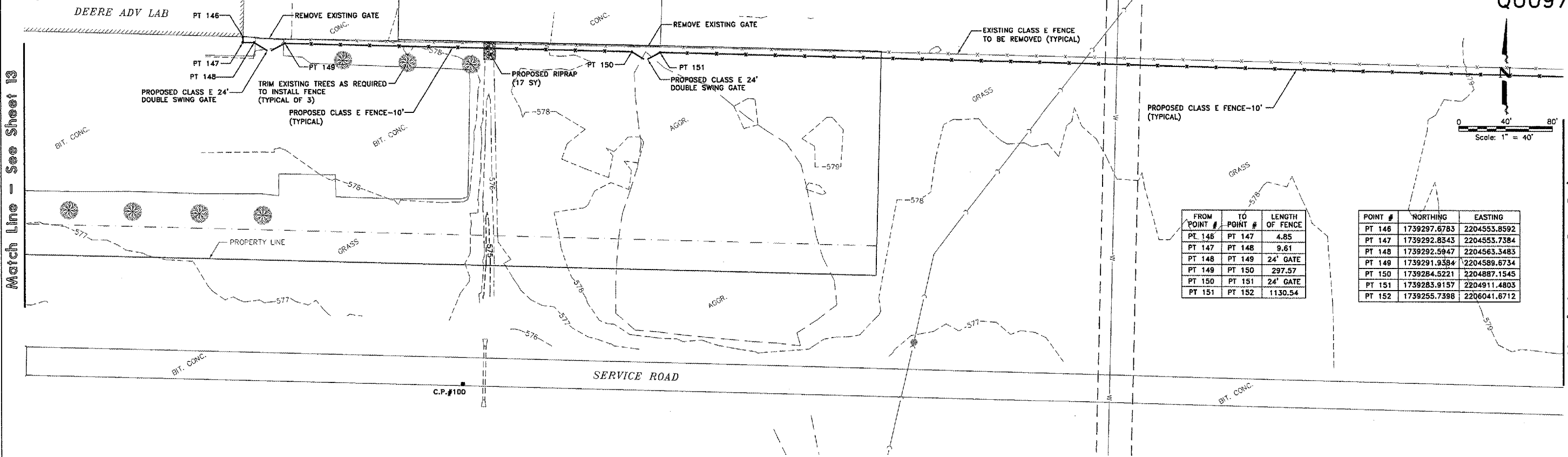
GENERAL CONSTRUCTION PLAN
 QUAD CITY INTERNATIONAL AIRPORT
 SECURITY FENCE - PHASE III
 MOLINE, ILLINOIS
 FILE NAME: F:\M0106.G08\DWG\060808MOL.DWG(C10)
 JOB NUMBER: 01-29-06-008

SHEET NO.
13
 OF 17

McCLURE CONTROL POINTS:

C.P. #100: N 1739002.8490 E 2204741.6298 ELEV - 576.61

QU097

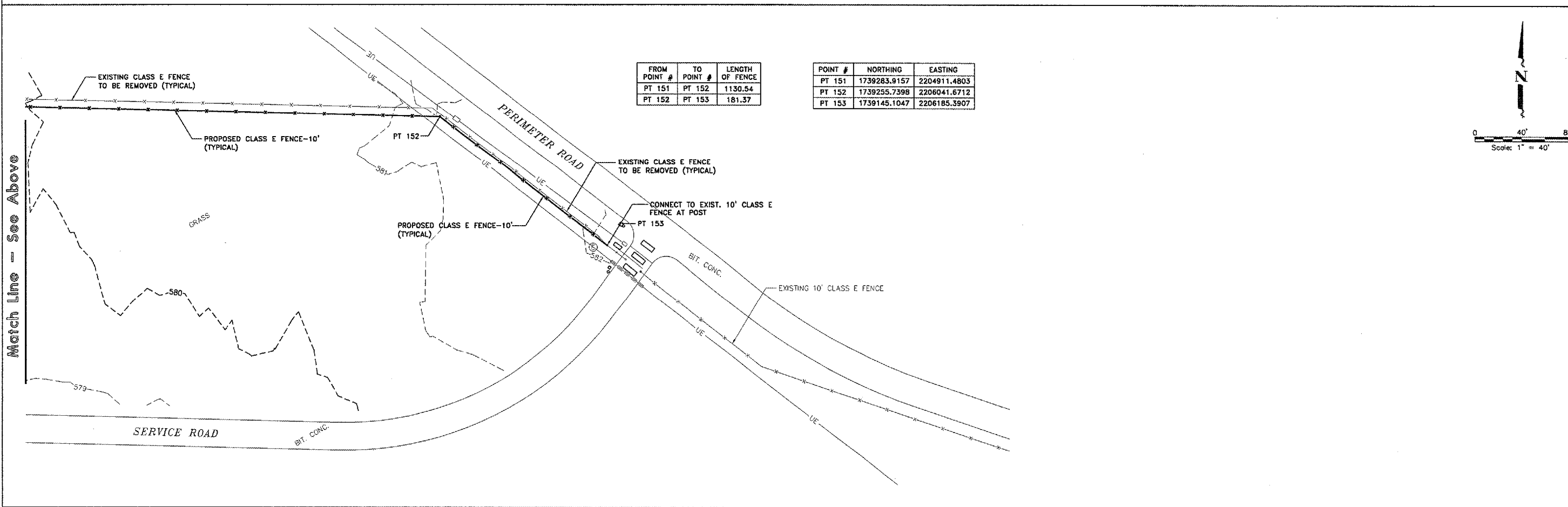


Match Line - See Sheet 13

Match Line - See Below

FROM POINT #	TO POINT #	LENGTH OF FENCE
PT 146	PT 147	4.85
PT 147	PT 148	9.61
PT 148	PT 149	24' GATE
PT 149	PT 150	297.57
PT 150	PT 151	24' GATE
PT 151	PT 152	1130.54

POINT #	NORTHING	EASTING
PT 146	1739297.6783	2204555.8592
PT 147	1739292.8343	2204555.7384
PT 148	1739292.5947	2204563.3483
PT 149	1739291.938*	2204589.6734
PT 150	1739284.5221	2204887.1545
PT 151	1739283.9157	2204911.4803
PT 152	1739255.7398	2206041.6712



Match Line - See Above

FROM POINT #	TO POINT #	LENGTH OF FENCE
PT 151	PT 152	1130.54
PT 152	PT 153	181.37

POINT #	NORTHING	EASTING
PT 151	1739283.9157	2204911.4803
PT 152	1739255.7398	2206041.6712
PT 153	1739145.1047	2206185.3907

QUAD CITY INTERNATIONAL AIRPORT
Moline, IL



REVISIONS		
NO.	ITEM	DATE

PLOTTING SCALE: 1" = 40'
DRAWN BY: SPW
CHECKED BY:
DATE: MARCH 2006

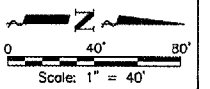
McCLURE ENGINEERING ASSOCIATES, INC.
4700 Kennedy Drive
(309) 792-9350
Coal Moline, Illinois 61704
FAX (309) 792-9874
Design Firm License: Illinois #184-000816
Copyright 2006 by McClure Engineering Associates, Inc.

GENERAL CONSTRUCTION PLAN
QUAD CITY INTERNATIONAL AIRPORT
SECURITY FENCE - PHASE III
MOLINE, ILLINOIS
JOB NUMBER: 01-29-06-008

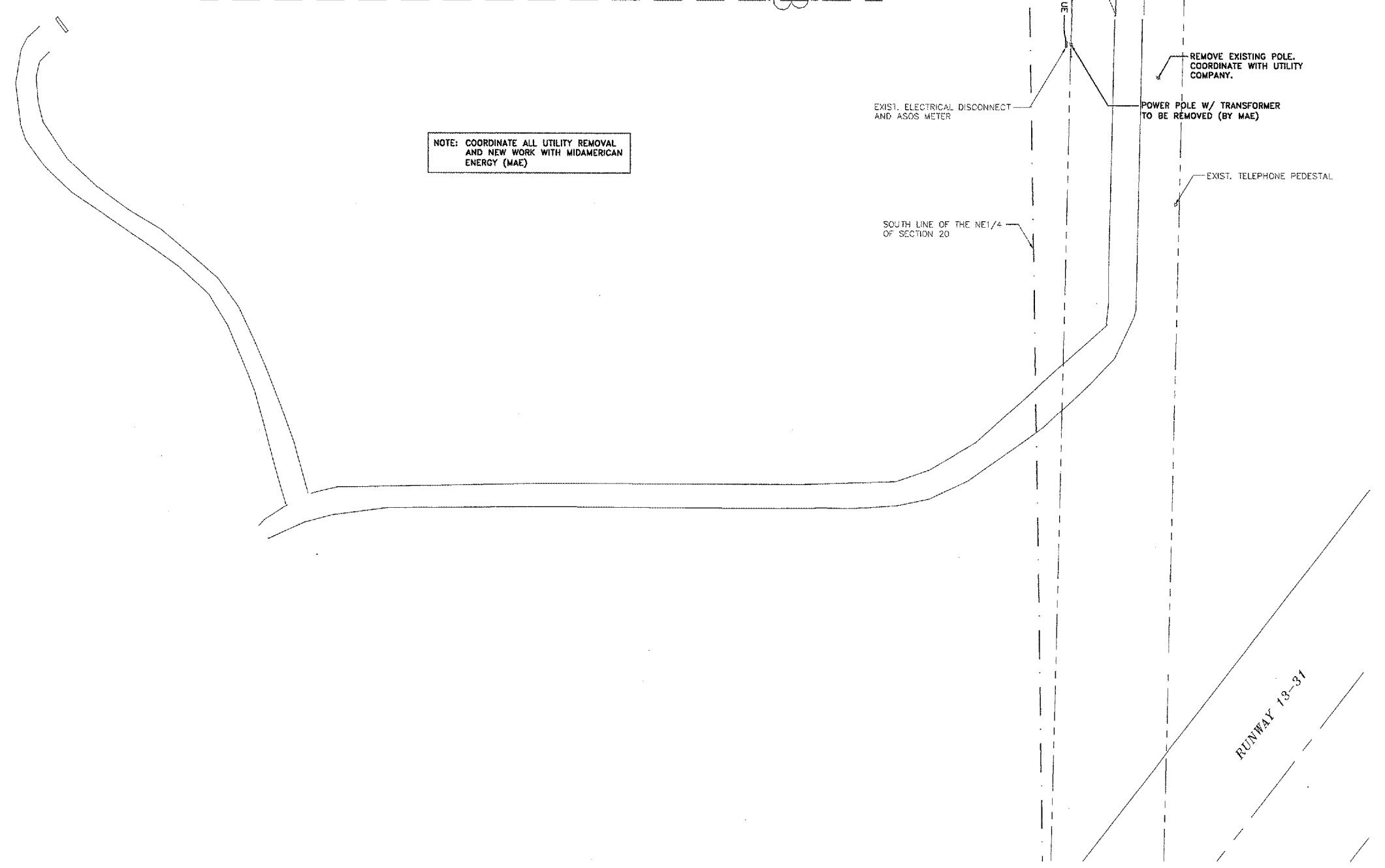
SHEET NO.
14
OF 17

Match Line - See Sheet 5

QU097



TAXIWAY "H"



NOTE: COORDINATE ALL UTILITY REMOVAL AND NEW WORK WITH MIDAMERICAN ENERGY (MAE)

- OVERHEAD SINGLE PHASE PRIMARY TO BE REMOVED (BY MAE)
- EXIST. TELEPHONE PEDESTAL
- POWER-POLE TO BE REMOVED (BY MAE)
- OVERHEAD SINGLE PHASE PRIMARY TO BE REMOVED (BY MAE)
- REMOVE EXISTING POLE. COORDINATE WITH UTILITY COMPANY.
- POWER POLE W/ TRANSFORMER TO BE REMOVED (BY MAE)
- EXIST. TELEPHONE PEDESTAL
- EXIST. ELECTRICAL DISCONNECT AND ASOS METER
- PROVIDE 3 - 4AWG - 1 1/2" CONDUIT TO EXISTING DISCONNECT FROM SECONDARY OF PAD MOUNTED TRANSFORMER.
- SOUTH LINE OF THE NE1/4 OF SECTION 20

QUAD CITY INTERNATIONAL AIRPORT
Moline, IL



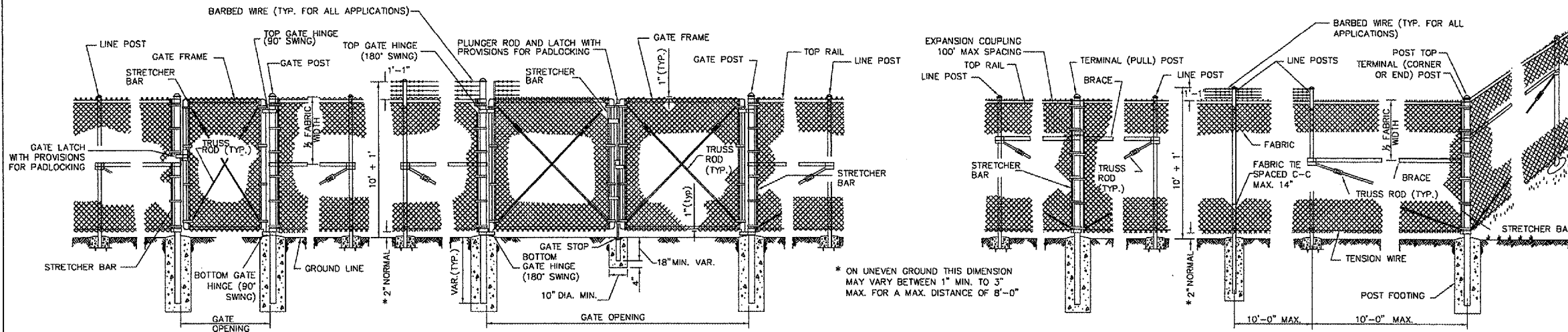
REVISIONS		
NO.	ITEM	DATE

PLOTTING SCALE: 1" = 40'
DRAWN BY: SPM
CHECKED BY:
DATE: MARCH 2006

McCLURE ENGINEERING ASSOCIATES, INC.
4700 Kennedy Drive East Moline, Illinois 61244
(309) 792-9390 FAX (309) 792-8874
Design Firm License: Illinois #184-000816
Copyright © 2005 by McClure Engineering Associates, Inc.

GENERAL CONSTRUCTION PLAN
QUAD CITY INTERNATIONAL AIRPORT SECURITY FENCE - PHASE III
MOLINE, ILLINOIS
FILE NAME: I:\MOT06.008\DWG\06008MDL.DWG(C12)
JOB NUMBER: 01-29-06-008

SHEET NO.
15
OF 17



POST AND BRACE TABLE		
DESCRIPTION	DIA.-INCHES	WT.-LBS/FT
LINE POST	3.0	4.65
TERMINAL POST	4.0	6.56
END POST	4.0	6.56
CORNER POST	4.0	6.56
PULL POST	4.0	6.56
GATE FRAMES	2.0	2.28
GATE POST	4.0	9.10
TOP RAIL	1.625	1.84
HORIZONTAL BRACE	1.625	1.84

NOTE: SEE DETAIL SHEET FOR SLIDING GATES

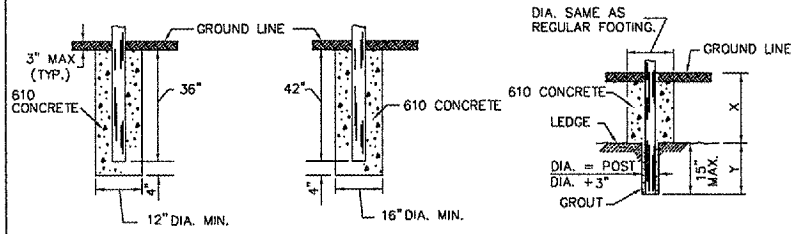
PEDESTRIAN GATE
NOT TO SCALE

VEHICLE GATE
NOT TO SCALE

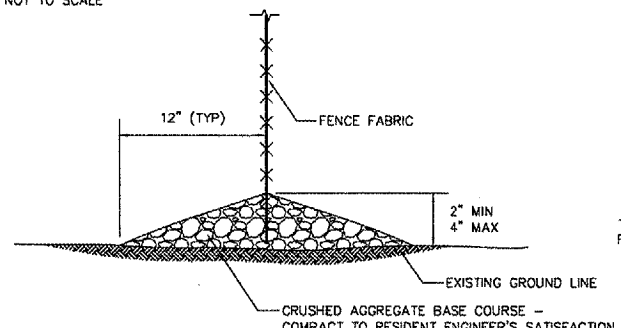
PULL POST
NOT TO SCALE

LINE POST
NOT TO SCALE

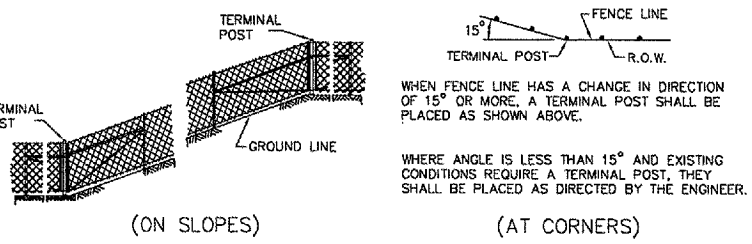
CORNER OR END POST
NOT TO SCALE



(LINE POST) (GATE & TERMINAL POST) (POST IN ROCK LEDGE)
NOTES: X + Y SHALL NOT EXCEED 24", 30" OR 36", AS APPLICABLE. WHEN X IS 0 TO 9", 15", OR 21", Y = 15", AND THE POST SHALL BE SHORTENED AS REQUIRED. WHEN X EXCEEDS 9", 15", OR 21", Y SHALL BE DECREASED CORRESPONDINGLY.



NOTE: HEIGHT OF FENCE ABOVE GROUND SHALL BE APPROVED PRIOR TO PLACING AGGREGATE



WHEN FENCE LINE HAS A CHANGE IN DIRECTION OF 15° OR MORE, A TERMINAL POST SHALL BE PLACED AS SHOWN ABOVE.
WHERE ANGLE IS LESS THAN 15° AND EXISTING CONDITIONS REQUIRE A TERMINAL POST, THEY SHALL BE PLACED AS DIRECTED BY THE ENGINEER.

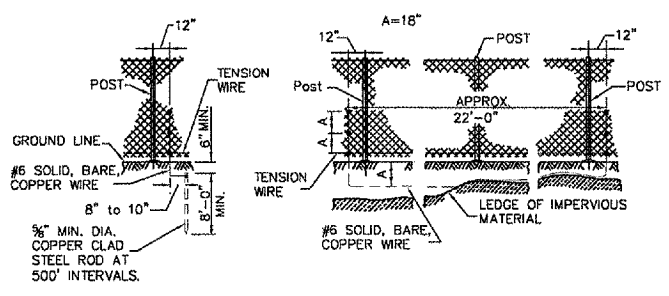
GENERAL NOTES

- PULL POSTS SHALL BE PLACED AT LOCATIONS DETERMINED BY THE ENGINEER. THEY SHALL BE PLACED AT 660' INTERVALS BETWEEN POSTS TO WHICH THE ENDS OF THE FABRIC ARE CLAMPED OR MIDWAY BETWEEN SUCH POSTS WHEN THE DISTANCE IS LESS THAN 1320' AND GREATER THAN 660'.
- TRUSS RODS SHALL BE 3/8" ROUND GALVANIZED STEEL ROD WITH GALVANIZED TURNBUCKLES. THE ZINC COATING SHALL NOT BE LESS THAN 1.2 OUNCES PER SQUARE FOOT OF SURFACE.
- "H" SECTION STRUCTURAL SHAPE AND SQUARE TUBULAR PIPE SHALL NOT BE ALLOWED.

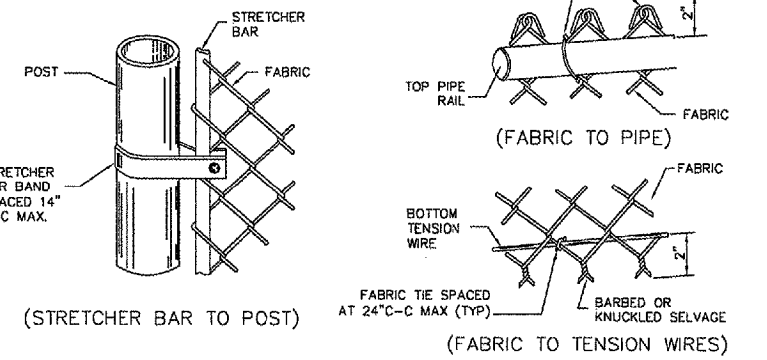
FOOTING DETAILS
NOT TO SCALE

AGGR. BASE DETAIL
NOT TO SCALE

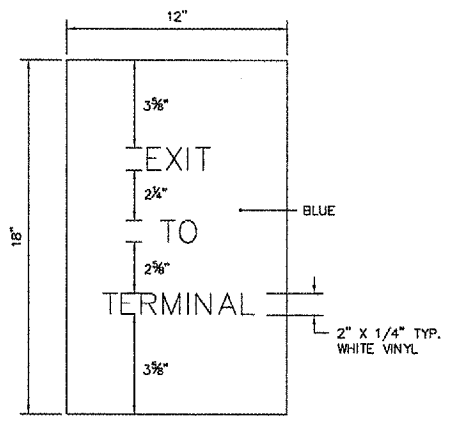
INSTALLATION DETAILS
NOT TO SCALE



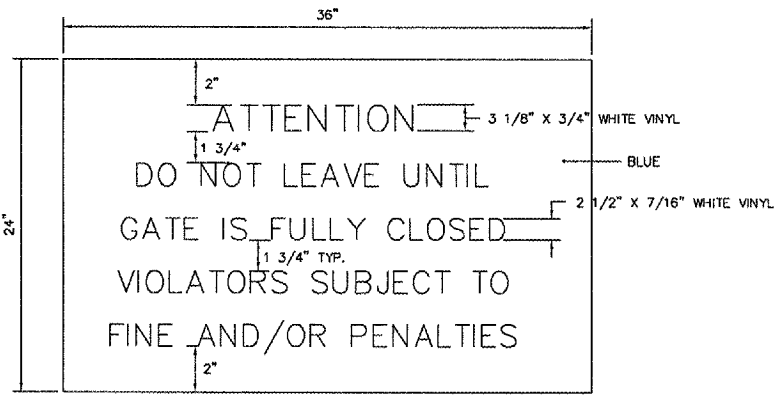
PROTECTIVE ELECTRICAL GROUNDS
NOT TO SCALE



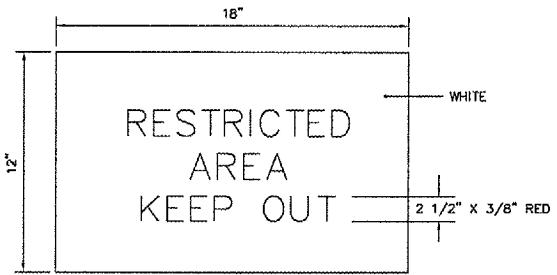
FASTENING METHODS
NOT TO SCALE



LOCATION: AT INSIDE OF GATE NO. 2 (6' GATE WEST OF TERMINAL) MATCH ENTRANCE ROAD SIGNS AND COLORS



LOCATION: AT ALL GATES ON BOTH SIDES OF THE FENCE MATCH ENTRANCE ROAD SIGNS AND COLORS

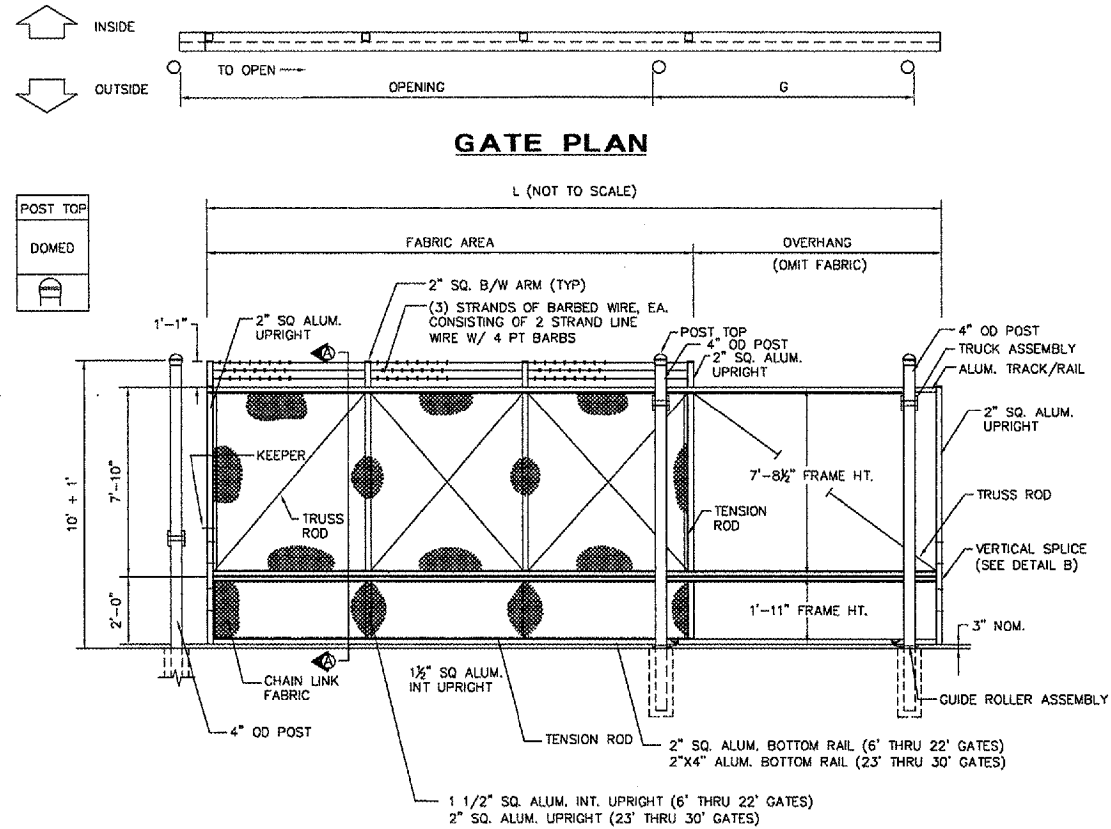


LOCATION: EACH GATE REQUIRES ONE SIGN AND EVERY 100' OF FENCE REQUIRES ONE SIGN PLACED ON THE OUTSIDE

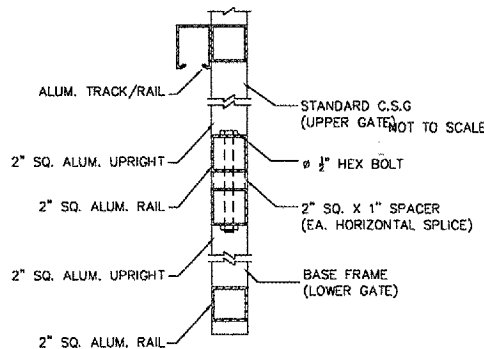
SIGN DETAILS
NOT TO SCALE

REVISIONS		
NO.	ITEM	DATE

PLOTTING SCALE:	1" = 1'
DRAWN BY:	SPM
CHECKED BY:	
DATE:	MARCH 2006

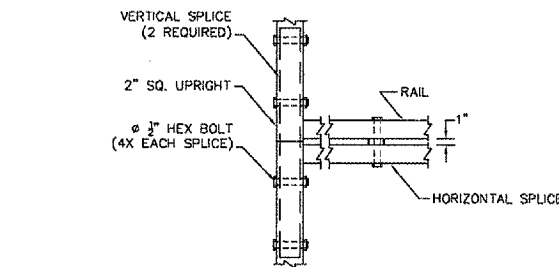
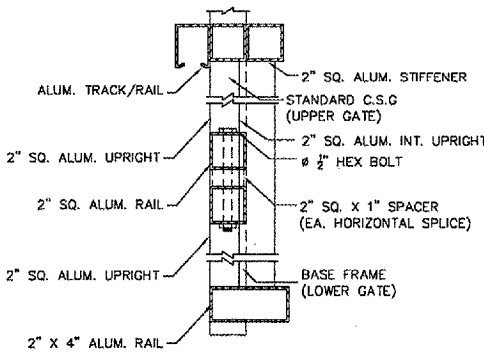


GATE ELEVATION (3 BAYS SHOWN)

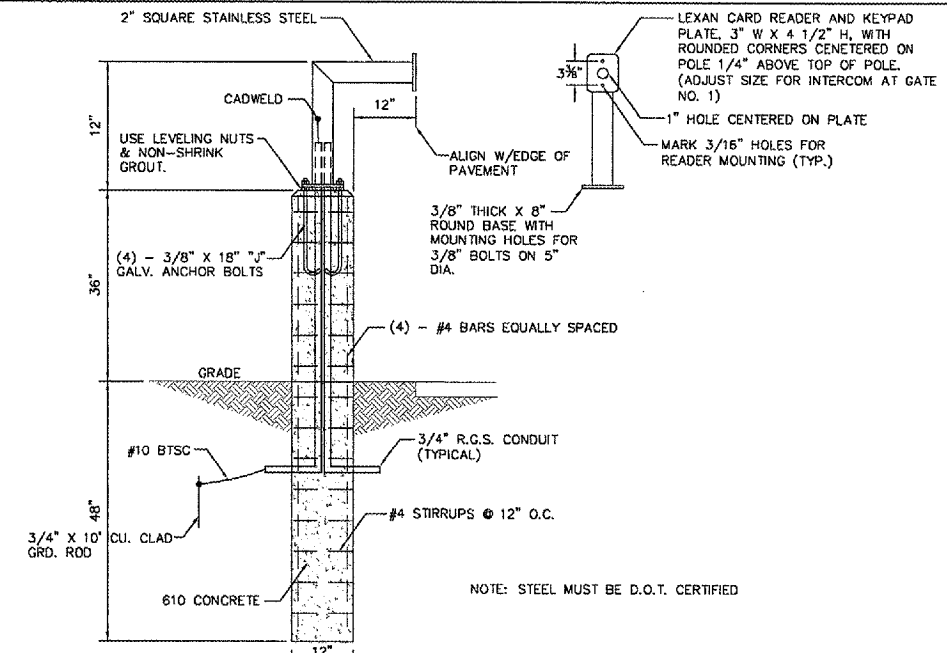


OPENING	LENGTH (L)	GATE POST (G)	BAYS	OVERHANG
1/5 POST FACE TO 1/5 POST FACE	0/5 DIM OF GATE LEAF	0/5 POST FACE TO 0/5 POST FACE	NUMBER OF BAYS WITH CHAIN LINK	NUMBER OF BAYS WITHOUT CHAIN LINK
12'-0"	19'-9"	7'-6"	(2) TWO	(1) ONE
16'-0"	26'-3"	10'-0"	(2) TWO	(1) ONE
20'-0"	30'-3"	10'-0"	(3) THREE	(1) ONE
24'-0"	36'-3"	12'-0"	(3) THREE	(2) TWO
26'-0"	38'-3"	12'-0"	(4) FOUR	(2) TWO

SECTION A (6'-22' GATES)



DETAIL B HORIZONTAL & VERTICAL SPLICE



CARD READER/KEY PAD PEDESTAL

EXISTING ELECTRIC GATE INFORMATION

NO.	LOCATION	SIZE	OPERATOR	POWER	ACCESS	OTHER COMPONENTS
1	WEST OF TERMINAL - MAIN GATE	24' SLIDE	LINEAR	277/480V, 3 PHASE	CARD READER AND INTERCOM	SAFETY LOOP; EXIT LOOP
2	WEST OF TERMINAL	6' SWING	NONE	UNKNOWN	KEYPAD IN, PUSH BUTTON OUT	MAG LOCK
3	C.A.P. BLDG.	24' SLIDE	STANLEY	120/208V, 3 PHASE	CARD READER AND TELEPHONE	EXIT LOOP
4	T-HANGER ROAD	26' SLIDE	STANLEY	208V, 1 PHASE	KEYPAD AND SLIDE CARD	SAFETY LOOP; EXIT LOOP
5	TARGET AVIATION	8' DOUBLE SWING	NONE	POWER FROM T-HANGER GATE	KEYPAD IN, PUSH BUTTON OUT	
7	W. END 74TH AVE.	26' DOUBLE SWING	2 - STANLEY	480V, 3 PHASE	REMOTE CONTROL W/ ANTENNA	
8	SPACE INDUSTRIES	16' SLIDE	STANLEY	120V, 1 PHASE	REMOTE CONTROL W/ ANTENNA	
9	ELLIOTT AVIATION	16' SLIDE	OSCO, 3/4 HP	230V, 1 PHASE, 4.1 A	KEYPAD; PUSH BUTTONS ON OPERATOR PANEL; REMOTE FROM INSIDE BLDG.; INTERCOM	2 SAFETY LOOPS; EXIST LOOP; POWER FOR SIGNS FROM OPERATOR PANEL; PHOTOCELL ON OPERATOR PANEL
10	ELLIOTT AVIATION	4' SWING	NONE	UNKNOWN	KEYPAD	MAG LOCK
11	DEERE AVIATION	12' SLIDE	HYSECURITY, 1 HP	120V, 1 PHASE, 14.8 A	KEYPAD IN BLDG. AND REMOTE CONTROL	

- NOTES:
- 1) THE ABOVE TABLE IS BASED UPON THE BEST INFORMATION AVAILABLE
 - 2) CONTRACTOR TO FIELD VERIFY EXISTING GATE CONDITIONS AND ENSURE COMPATABILITY WITH PROPOSED GATE REQUIREMENTS

PROPOSED ELECTRIC GATE INFORMATION

NO.	LOCATION	SIZE	OPERATOR	ACCESS	OTHER COMPONENTS	REMARKS
1	WEST OF TERMINAL - MAIN GATE	24' SLIDE	HYSECURITY 222CF, 1HP	CARD READER AND INTERCOM ON PEDESTAL	REUSE EXISTING SAFETY & EXIT LOOPS	ADD ARMING LOOP
2	WEST OF TERMINAL	6' SWING	NONE	KEYPAD IN, PUSH BUTTON OUT, MAG LOCK	HYDRAULIC GATE CLOSER - SENTINAL SN55 SL OR EQUAL	PROVIDE PROVISION FOR PADLOCK
3	C.A.P. BLDG.	24' SLIDE	LIFTMASTER SL 585, 1HP OR APPROVED EQUAL	CARD READER ON PEDESTAL, REUSE TELEPHONE	REUSE EXIT LOOP	ADD SAFETY & ARMING LOOP
4	T-HANGER ROAD	26' SLIDE	LIFTMASTER SL 585, 1HP OR APPROVED EQUAL	KEYPAD ON PEDESTAL	PROVIDE NEMA ENCLOSURE; ABANDON EXISTING SAFETY & EXIT LOOPS	ADD SAFETY, EXIT AND ARMING LOOPS
5	TARGET AVIATION	5' TURNSTILE	LIFTMASTER SL 585, 1HP OR APPROVED EQUAL	KEYPAD IN, FREE OUT		
6	S. SIDE 76TH AVE.	12' SLIDE	LIFTMASTER SL 585, 1HP OR APPROVED EQUAL	REUSE KEYPAD IN BLDG. & REMOTE CONTROL		MATCH EXISTING SYSTEM
7	W. END 74TH AVE.	26' SLIDE	LIFTMASTER SL 585, 1HP OR APPROVED EQUAL	REMOTE CONTROL		MATCH EXISTING SYSTEM
8	SPACE INDUSTRIES	16' SLIDE	LIFTMASTER SL 585, 1HP OR APPROVED EQUAL	REMOTE CONTROL		MATCH EXISTING SYSTEM
9	ELLIOTT AVIATION	16' SLIDE	LIFTMASTER SL 585, 1HP OR APPROVED EQUAL	REUSE KEYPAD, INTERCOM & REMOTE INSIDE BLDG.	REUSE EXISTING SAFETY & EXIT LOOPS; RECONNECT POWER FOR SIGNS; PROVIDE PHOTOCELL	ADD ARMING LOOP
10	ELLIOTT AVIATION	4' SWING	NONE	REUSE KEYPAD	MAG LOCK	MATCH EXISTING SYSTEM
11	DEERE AVIATION	12' SLIDE	HYSECURITY 222CF, 1HP	REUSE KEYPAD IN BLDG. & REMOTE CONTROL	WARNING ALARM, OBSTRUCTION SENSING	MATCH EXISTING SYSTEM

- NOTES:
- 1) CARD READER SHALL BE INDALA LEGACY WALLSWITCH PROXIMITY READERS OR APPROVED EQUAL.
 - 2) KEYPADS SHALL BE INDALA ARK-501 KEYPAD READERS OR APPROVED EQUAL.
 - 3) INTERCOM AT GATE NO. 1 SHALL BE AIPHONE CATALOG NUMBER NE-JA OR APPROVED EQUAL AND INCLUDES REPLACEMENT WITH A MASTER INTERCOM UNIT, CATALOG NUMBER NEM-30A/C, AT THE AIRCRAFT RESCUE AND FIRE FIGHTING (ARFF) BUILDING, AS WELL AS A CATALOG NUMBER PS-2420UL, 24V DC POWER SUPPLY AND THE REPLACEMENT OF 11 ADDITIONAL NE-JA INTERCOMS AT ARFF.
 - 4) GATE AND OPERATOR INSTALLATION SHALL INCLUDE CARD READERS, KEYPADS, INTERCOMS, PEDESTALS, SAFETY LOOPS AND ARMING LOOPS AS DESCRIBED ABOVE AND SHOWN ON THE PLANS FOR EACH INDIVIDUAL GATE, AS WELL AS, RECONNECTION OF ITEMS SHOWN TO BE REUSED.
 - 5) INSTALLATION SHALL ALSO INCLUDE, BUT NOT BE LIMITED TO, ALL CONDUIT, CABLE, WIRING, JUNCTION BOXES, SERVICE DISCONNECTS, WATERPROOF SPLICES AND CONCRETE OPERATOR PADS AS REQUIRED TO COMPLETE EACH ELECTRIC GATE SYSTEM.
 - 6) THE CONTRACTOR SHALL FIELD VERIFY EXISTING VOLTAGE AND CURRENT AT EACH LOCATION, AS WELL AS, MEASUREMENTS, CONSTRUCTION CRITERIA, MATERIAL REQUIREMENTS AND SIMILAR DATA TO ENSURE COMPLETION OF THE WORK TO THE PROPOSED REQUIREMENTS.
 - 7) THE CONTRACTOR SHALL SUBMIT SHOP DRAWINGS AND BY DOING SO REPRESENTS THAT THEY HAVE DETERMINED AND VERIFIED ALL FIELD MEASUREMENTS, FIELD CONSTRUCTION CRITERIA, MATERIALS, CATALOG NUMBERS AND SIMILAR DATA AND THAT THEY HAVE CHECKED AND COORDINATED THE INFORMATION CONTAINED IN SUCH SUBMITTALS WITH THE REQUIREMENTS OF THE WORK AND THE SPECIAL PROVISIONS.