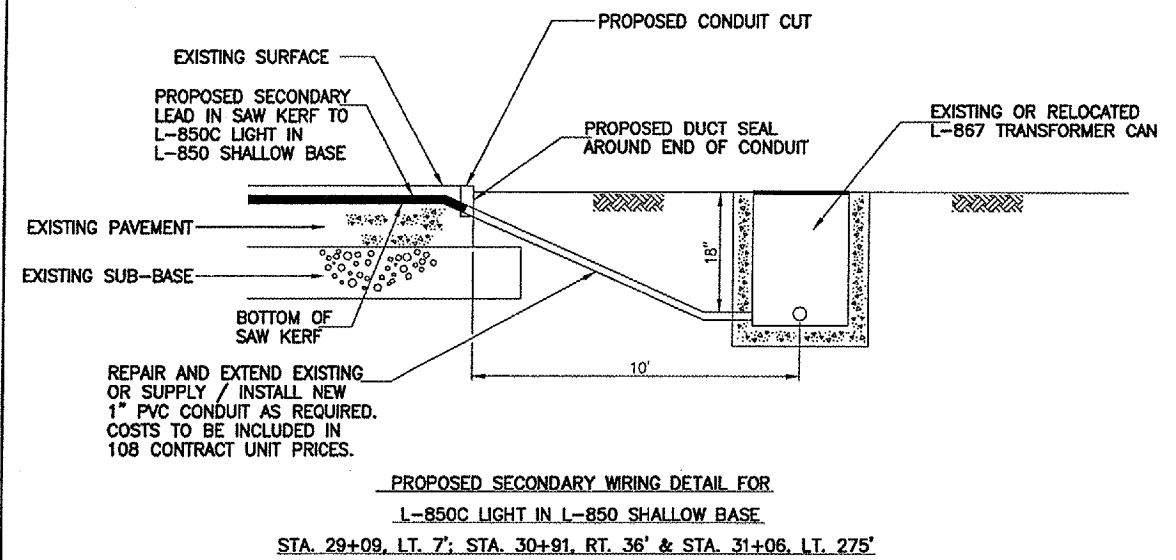
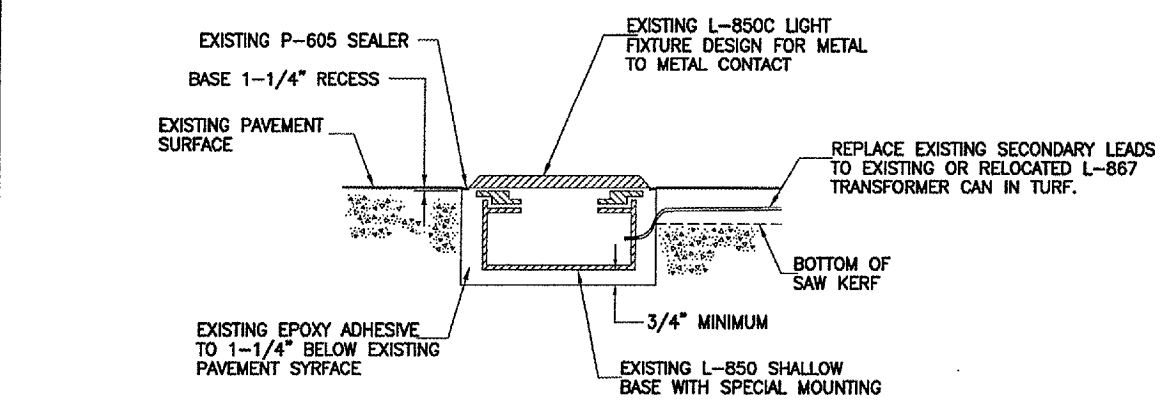


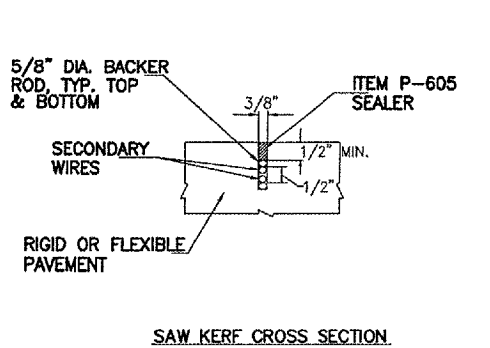
ADJUSTMENT / RELOCATION OF EXISTING GUIDANCE SIGNS



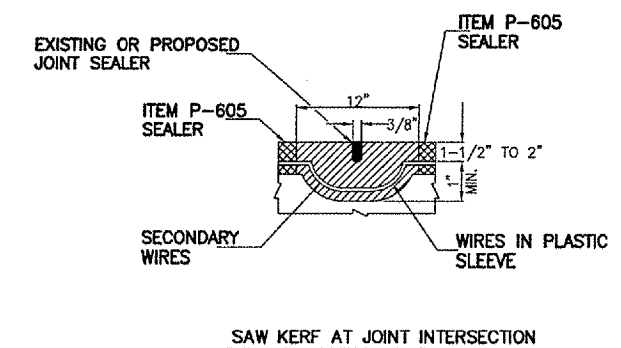
PROPOSED SECONDARY WIRING DETAIL FOR
L-850C LIGHT IN L-850 SHALLOW BASE
STA. 29+09, LT. 7'; STA. 30+91, RT. 36' & STA. 31+06, LT. 275'



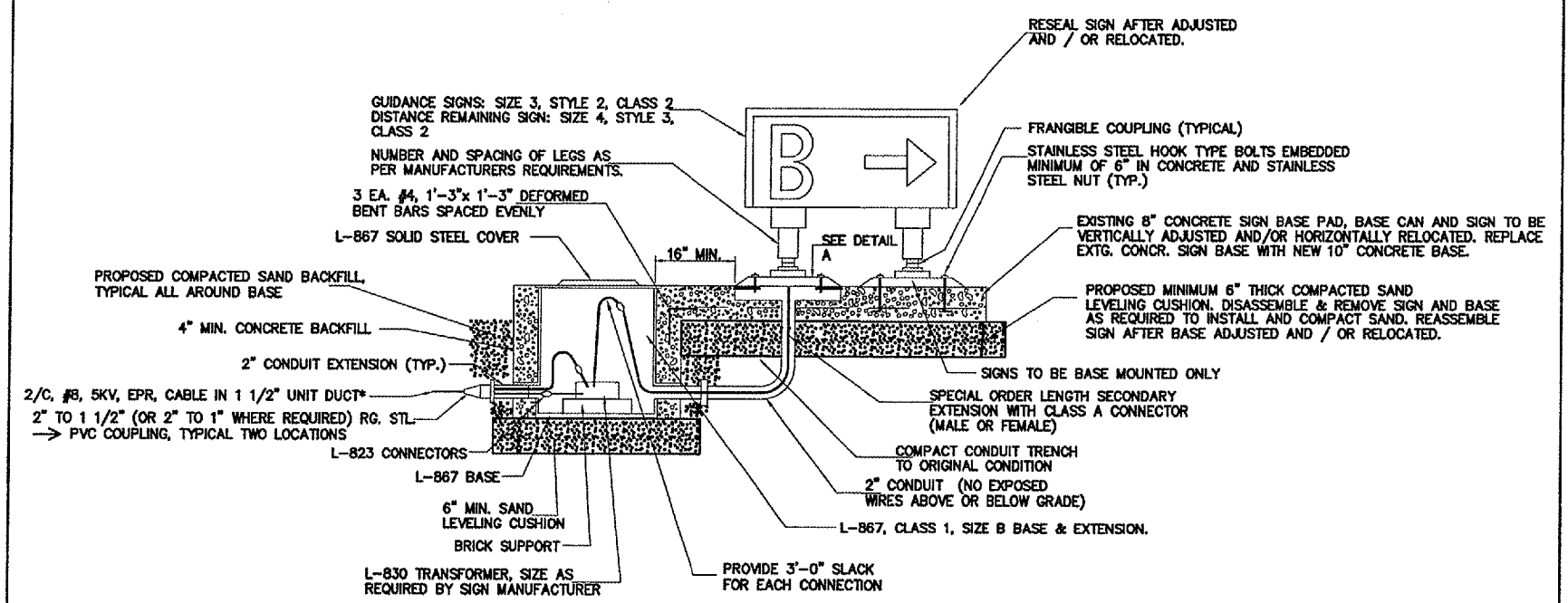
TYPICAL INSTALLATION OF L-850C HIRLO IN PAVEMENT
EDGE LIGHT ON L-850 SHALLOW BASE
STA. 29+09, LT. 7'; STA. 30+91, RT. 36' & STA. 31+06, LT. 275'



SAW KERF CROSS SECTION



SAW KERF AT JOINT INTERSECTION

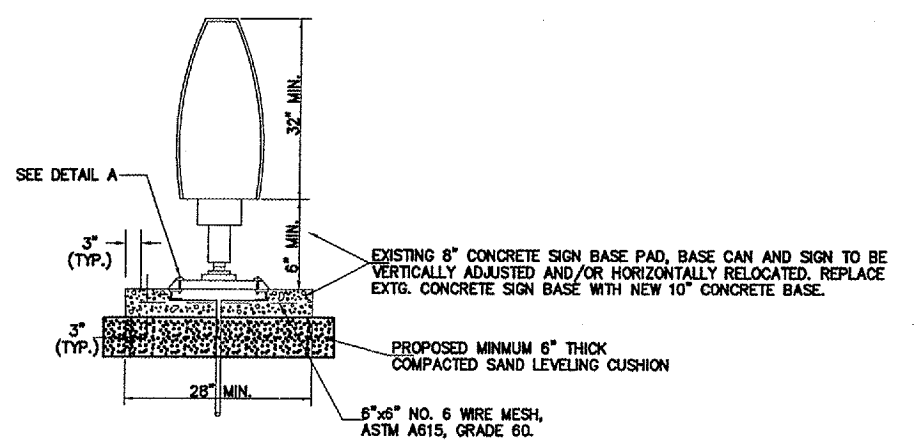


FRONT VIEW

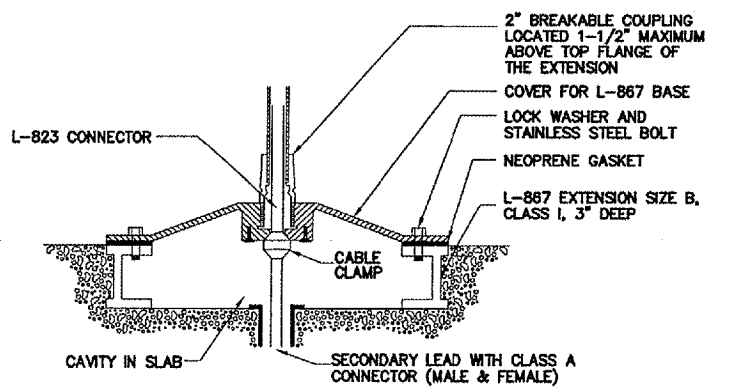
* = FOR SIGN ELEVATION ADJUSTMENTS, RAISE EXISTING UNIT DUCT AS REQUIRED TO ADJUST ELEVATION OF TRANSFORMER CAN.

NOTES:

- COLOR CODE TAPE FOR WIRE IDENTIFICATION 6\"/>
- CONTRACTOR MAY REUSE EXISTING MATERIALS AND EQUIPMENT. CONTRACTOR SHALL SUPPLY AND INSTALL NEW EQUIPMENT AND MATERIALS AS REQUIRED TO COMPLETE SIGN ADJUSTMENT / RELOCATION.
- DRAINAGE TO FLOW AWAY FROM SIGN. NO WATER PONDING AROUND SIGN BASE PERMITTED.



SIDE VIEW



DETAIL A

LIGHTING DETAILS

G:\AIRPORT\A05T034CHARLIE\LIGHTING1.DWG, 6/27/2006 10:43:17 AM, jeffm