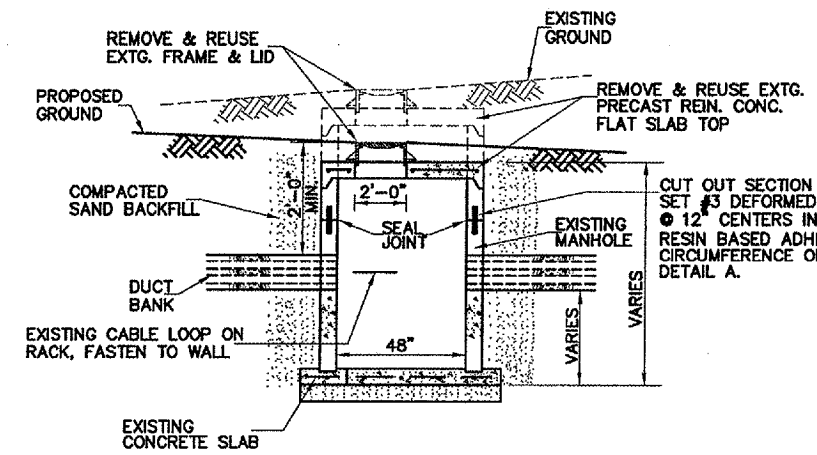
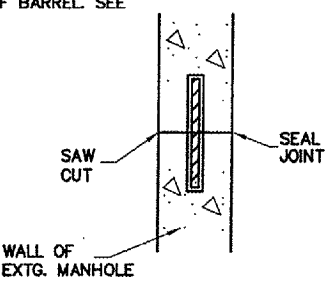


MANHOLE RECONSTRUCTION DETAIL

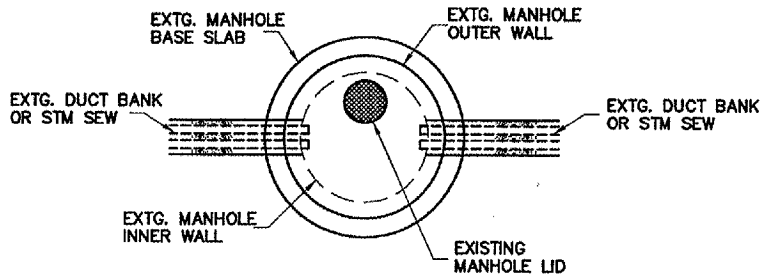
RECONSTRUCT EXISTING MANHOLES					
REFERENCE NUMBER	LOCATION		MANHOLE TYPE	LID ELEVATION	
	STA.	OUT		EXISTING	PROPOSED
1	32+06	RT. 57'	STORM	583.15	582.76
2	32+80	RT. 62'	ELECTRICAL	582.72	582.43
3	32+81	LT. 58'	ELECTRICAL	582.70	582.53



PROFILE VIEW



DETAIL A



PLAN VIEW

- EXISTING CIRCUITS IN DUCT BANKS:
- 5-23 CRT HR
 - 13-31 CRT 1 HR
 - 13-31 CRT 2 HR
 - 9-27 CRT 1 HR
 - 9-27 CRT 2 HR
 - T-A CRT HR
 - T-B CRT HR
 - T-B-1 CRT HR
 - T-F-2 CRT CABLE
 - SIGN CRT HR
 - FAA CONTROL CABLES
 - FIBER OPTIC CONTROL CABLES

RECONSTRUCT PROCEDURE:

1. EXCAVATE MANHOLE.
2. REMOVE FRAME & LID.
3. REMOVE FLAT SLAB TOP.
4. SAW CUT OUT SECTION OF BARREL.
5. DRILL HOLES FOR TIE BARS IN BARREL SECTIONS.
6. INSTALL TIE BARS IN ADHESIVE.
7. REINSTALL BARREL SECTION, FLAT SLAB TOP, AND FRAME / LID.
8. BACKFILL MANHOLE WITH COMPACTED SAND.

GENERAL NOTES:

1. THE CONTRACTOR SHALL FIELD VERIFY MEASUREMENTS AND SUPPLY ALL LABOR, EQUIPMENT AND MATERIALS REQUIRED TO RECONSTRUCT MANHOLES TO THE ELEVATIONS SHOWN.
2. BOLT HOLES SHALL BE CLEANED FREE OF RUST AND LID BOLTED DOWN WATER TIGHT. COST TO BE INCLUDED IN RECONSTRUCT MANHOLE UNIT PRICE.
3. ALL MATERIALS REMOVED AND NOT REUSED SHALL BE DISPOSED OF BY THE CONTRACTOR AT AN APPROVED LOCATION OFF OF AIRPORT PROPERTY.
4. ALL WORK DESCRIBED IN THIS DETAIL WILL NOT BE PAID FOR SEPARATELY BUT SHALL BE INCLUDED IN THE CONTRACT PRICE FOR RECONSTRUCT MANHOLE.

G:\airport\A05T034CHARLIE\MISC1.dwg, 6/27/2006 10:46:48 AM, jeffm